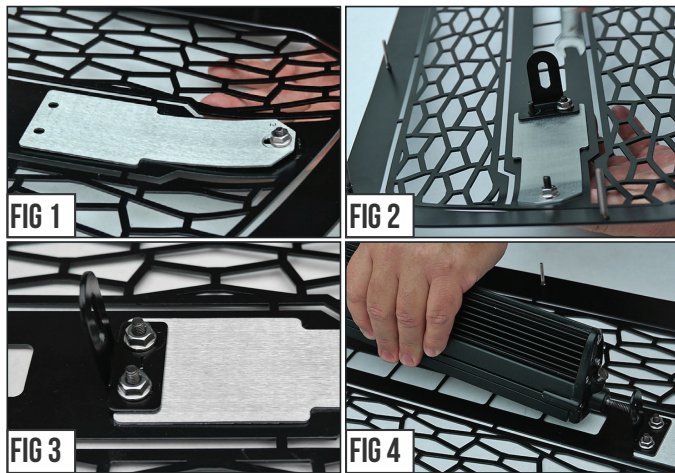


START HERE The ZROADZ Series Grilles comes into 2 different configurations. One style features the LED Light Bar mounting hidden on the backside, while the other style has exposed mounting provisions on the face side of the grille. Please note this and identify your ZROADZ Grille Series configuration and follow the instruction version that corresponds with your grille.

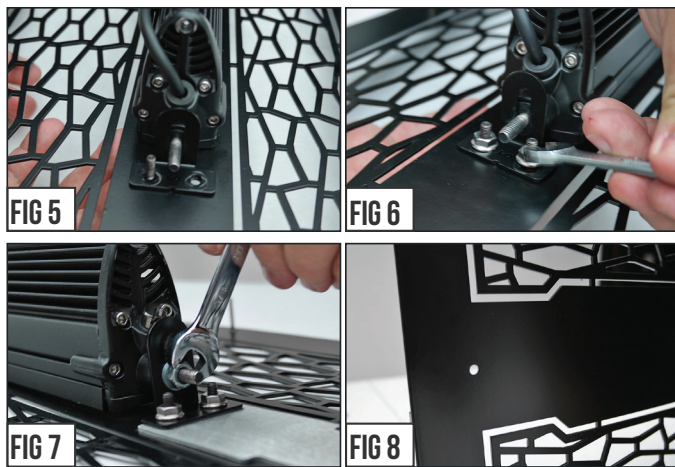
GRILLE CONFIGURATION STYLE 1



STEP 1 Lay out your parts. From the backside of the grille, put into place the ZROADZ Logo Backing Plate.

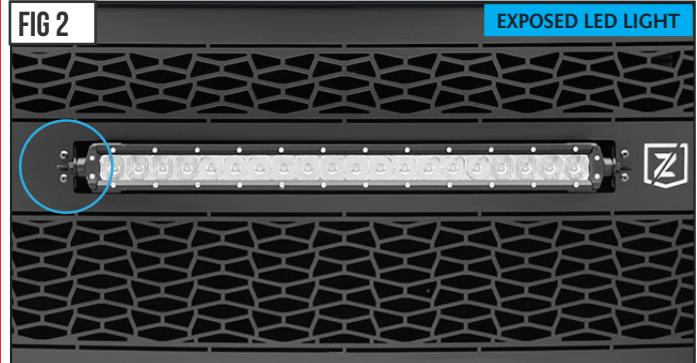


STEP 2 Put into place one of the Bracket Tabs and secure with provided Hardware as seen in Fig. # 2-4 and then from the backside of grille position LED Light Bar.

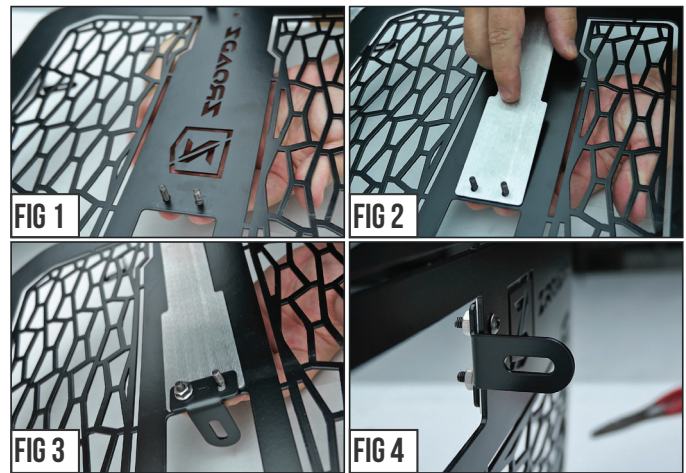


STEP 3 With LED Light placement set, put into position the remaining bracket and the finally tighten LED and all Mounting Brackets into their final secured position.

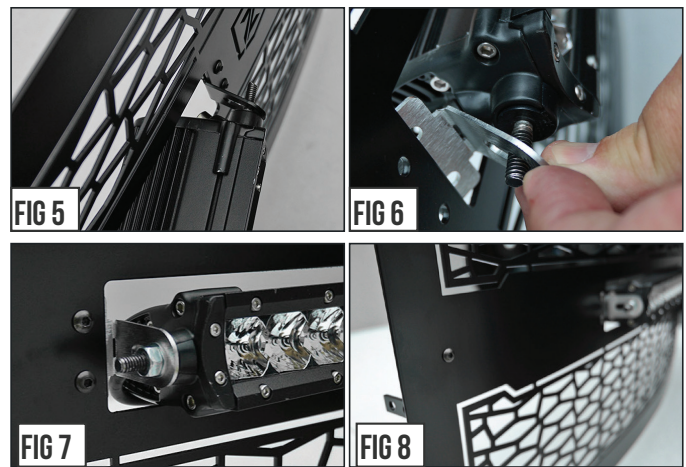
GRILLE CONFIGURATION STYLE 2



STEP 1 Lay out your parts. From the backside of the grille, put into place the ZROADZ Logo Backing Plate.



STEP 2 Put into place one of the Bracket Tabs and secure with provided Hardware as seen in Fig. # 1-4.



STEP 3 From the face side of grille slip the LED Light bar into place. On the opposite side, position the remaining bracket and finally tighten LED and Brackets into position.

STEP 4 There is a final step for both styles of ZROADZ Grilles. See both of the Figure #8 Images and note that there is an exposed hole. Use the Provided Hardware Button Head Screw and fill the hole and tightened down with Nut. This will create symmetrical look from side to side.

GRILLE ASSEMBLY - COMPLETE

Z311221

2015 Chevrolet Silverado
2500/3500 HD



Z311221

2015 Chevrolet Silverado
2500/3500 HD

2015 Chevrolet Silverado 2500/3500 HD ZROADZ Series LED Grille 2pc Overlay

TOOLS REQUIRED:

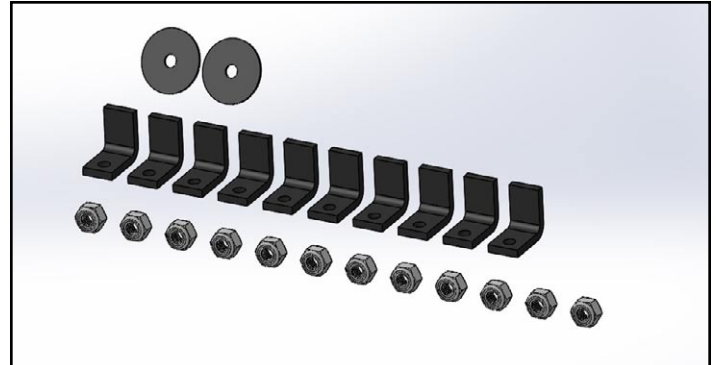
Flat Head Screwdriver
Phillips Head Screwdriver
10mm Socket
Ratchet & Extensions
3/16" Drill Bit
Power Drill
Cutting Wheel or Saw
Sander or File

NOTE:

- We recommend painting all areas exposed behind grille black prior to installing for best results.

PARTS LIST

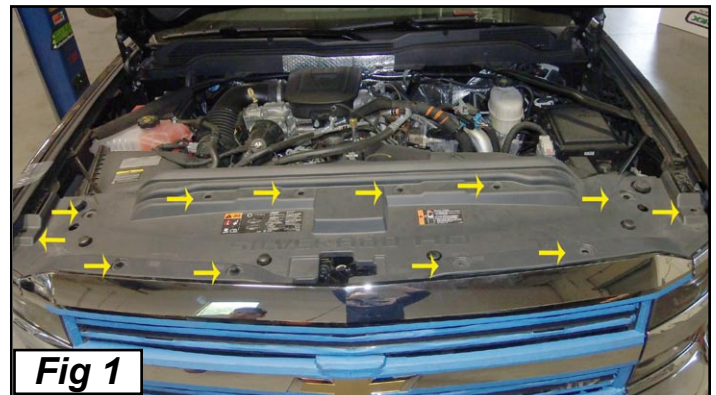
(12) 6-32 Nylock Nuts
(10) 1/2"x1/2" L Brackets
(2) 1" Fender Washers



PLEASE READ AND UNDERSTAND ALL INSTRUCTIONS BEFORE INSTALLATION. Auto makers offer varied models to each vehicle and occasionally manufacture more than one body style of the same model. To assure your part is correct; our tech department can be contacted at tech@trexbillet.com to verify fitment or assist with tech questions. All other inquires can be directed to info@trexbillet.com. In the event you do not have internet access please call 1-800-287-5900.

Step 1

Open hood and remove the 12 plastic push clips securing the plastic radiator shroud to the radiator core. Carefully use a flat head screwdriver to release the clip up, you can now remove the clips. Once all clips have been removed the plastic radiator shroud can be removed. (Fig 1)



Step 2

Using your 10mm socket and ratchet remove the four (4) 10mm bolts securing the upper grille assembly to the radiator support. (Fig 2)





Step 3

Gently lift the top of grille assembly up while pulling back at the same time. Depress the four (4) release tabs located on the inside of the factory grille assembly with your flat head screwdriver. Firmly grasp the grille pulling away from the vehicle to remove it. (Fig 3)

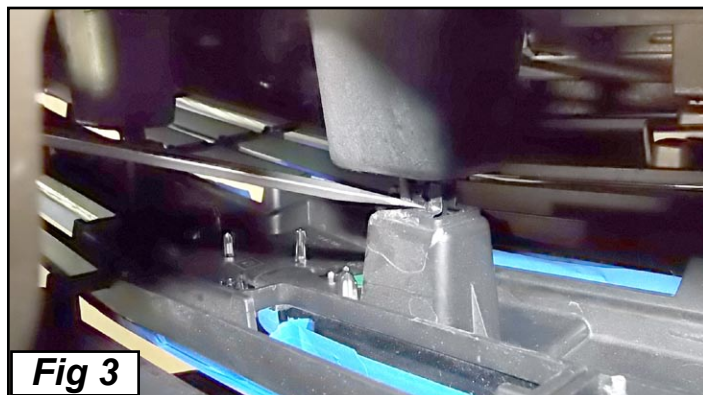


Fig 3

Step 4

Drill two 3/16" holes into the upper factory grille insert. Drill next to the vertical plastic bar on both and left and right side center of the grille. (Fig 4)



Fig 4

Step 5

Using your lower torch grille as a template trace the light opening over the factory grille. Using a saw or cutting wheel carefully cut out the opening for the LED light bars. Use a sander or file to take down and rough edges. (Fig 5)



Fig 5

Z311221

2015 Chevrolet Silverado
2500/3500 HD



Z311221

2015 Chevrolet Silverado
2500/3500 HD

Step 6

Insert the upper grille over the factory grille. The two exposed studs insert into the holes drilled in step 4. Use the flat washers and nylock nuts to secure the studs to the grille (Fig 6). Secure the remaining studs with the L Brackets and Nylock Nuts.



Fig 6

Step 7

Install the lower LED grille over the factory grille. From the back of the grille secure the grille studs to the factory grille with the L Brackets and Nylock nuts. (Fig 7)



Fig 7

Step 8

Your installation is now complete. Reattach the grille assembly back to the vehicle in reverse order of removal. Make sure you reconnect all disconnected wiring harness and reattach all clips and screws. Wire the LED Light Bar via our optional wiring harness kit (part# 639HAR1) or custom wiring harness. We recommends Torch Grilles be wired with our optional wiring harness kit (part#639HAR1). Light bars are installed flush with the grille from the factory. This may or may not be ideal for each light depending on the configuration of your vehicle and its options and or modifications. To adjust the angle of your Light Bar, rotate the Light Bar to adjust the angle, then tighten the hardware once the desired angle is achieved (please be careful not to over tighten the mounting hardware or scratch the finish of the grille). It is best to adjust the angle with the vehicle on level ground with lights facing a wall, garage door or other solid barrier. We recommend checking from a distance of 25'. Your installation is now completed. (Fig 8)



Fig 8

ZROADZ

*THIS ZROADZ SERIES SLIMLINE LED GRILLE IS MADE BY T-REX TRUCK PRODUCTS, INC.

T-REX