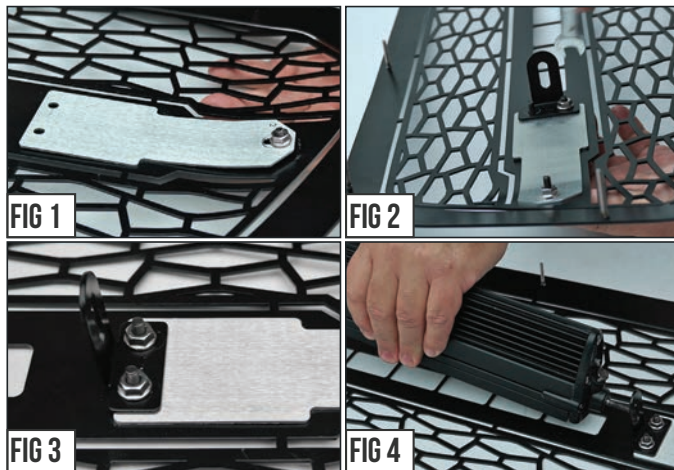


START HERE The ZROADZ Series Grilles comes into 2 different configurations. One style features the LED Light Bar mounting hidden on the backside, while the other style has exposed mounting provisions on the face side of the grille. Please note this and identify your ZROADZ Grille Series configuration and follow the instruction version that corresponds with your grille.

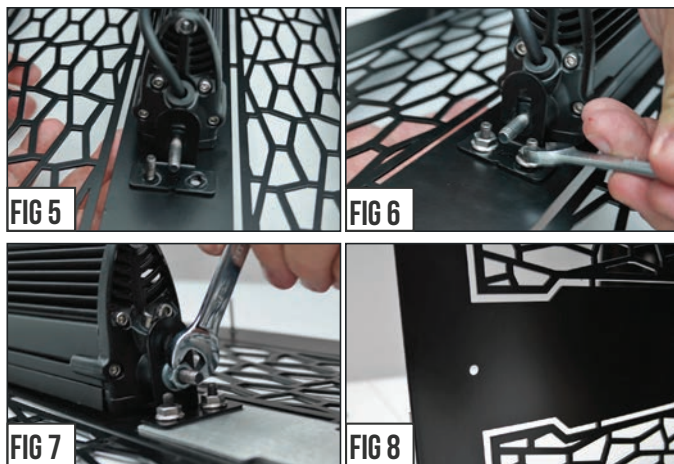
GRILLE CONFIGURATION STYLE 1



STEP 1 Lay out your parts. From the backside of the grille, put into place the ZROADZ Logo Backing Plate.

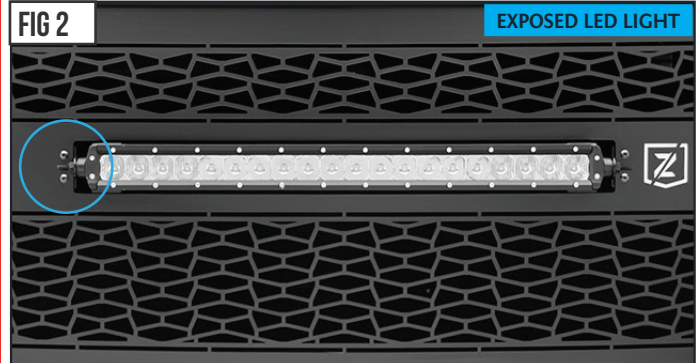


STEP 2 Put into place one of the Bracket Tabs and secure with provided Hardware as seen in Fig. # 2-4 and then from the backside of grille position LED Light Bar.

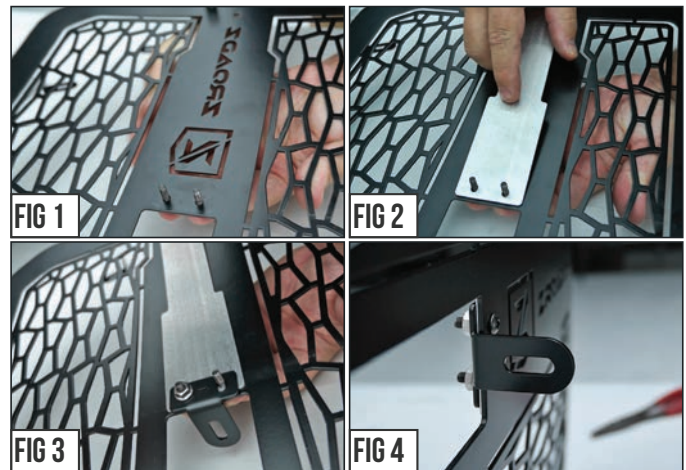


STEP 3 With LED Light placement set, put into position the remaining bracket and the finally tighten LED and all Mounting Brackets into their final secured position.

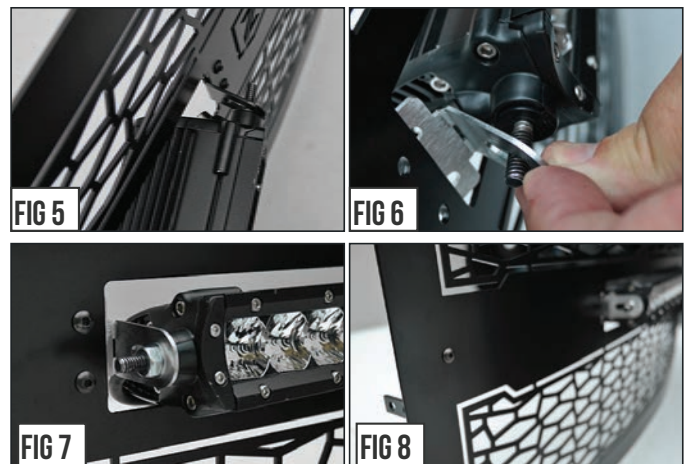
GRILLE CONFIGURATION STYLE 2



STEP 1 Lay out your parts. From the backside of the grille, put into place the ZROADZ Logo Backing Plate.



STEP 2 Put into place one of the Bracket Tabs and secure with provided Hardware as seen in Fig. # 1-4.



STEP 3 From the face side of grille slip the LED Light bar into place. On the opposite side, position the remaining bracket and finally tighten LED and Brackets into position.

STEP 4 There is a final step for both styles of ZROADZ Grilles. See both of the Figure #8 Images and note that there is an exposed hole. Use the Provided Hardware Button Head Screw and fill the hole and tightened down with Nut. This will create symmetrical look from side to side.

GRILLE ASSEMBLY - COMPLETE

T-REX

GRILLES



ZROADZ GRILLE

MAIN GRILLE - #Z315811

2018 F-150 w/ FFC

PARTS INCLUDED

(1) ZROADZ Series - Main Part #Z315811

GRILLE REMOVAL & GRILLE INSTALLATION GUIDE

START HERE

PLEASE READ AND UNDERSTAND ALL INSTRUCTIONS BEFORE INSTALLATION. Auto makers offer varied models to each vehicle and occasionally manufacture more than one body style of the same model. To assure your part is correct; our tech department can be contacted at tech@trexbillet.com to verify fitment and assist with technical questions. All other inquires can be directed to info@trexbillet.com. In the event you do not have internet access please call 1-800-287-5900.

* APPLICATION MODELS VARY. WE RECOMMEND TO VERIFY FITMENT BEFORE BEGINNING INSTALLATION PROCESS.
* IMAGES FEATURED IN THE INSTRUCTION DOCUMENTS MAY NOT ALWAYS EXACTLY MATCH YOUR GRILL.

HARDWARE INCLUDED

- (5) M6 x 25mm Hex Bolts
- (7) #10 Washer 9/16"
- (5) Extruded "U" Nuts
- (3) 3/16" X 1" SS Black Fender Washer
- (5) #10-32 Nylon Nuts
- (2) #10-32 x 5/8" Screws
- (1) Torx T-40 Bit



* Image of Hardware

TOOLS REQUIRED

- Screwdriver set (Flat Head)
- 10mm, 8mm, 7mm Sockets
- Ratchet Tool
- 1/2" Wedge or Prying Tool
- Pocket Knife
- 1/8" Allen Key

STEP 1 GRILLE REMOVAL

- 1) Turn off engine and chalk tires with stop block. Open Hood. 1. Disconnect negative battery terminal.

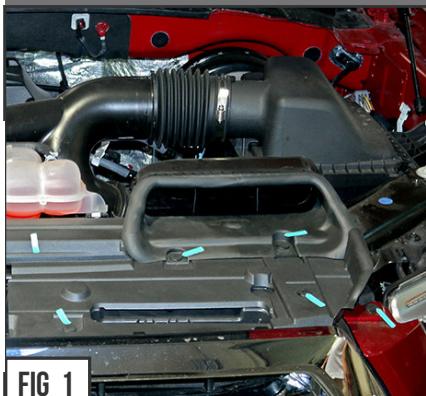


FIG 1

PRO TIP:

Before you begin, use "3M Painters Tape" to apply a protective guard around the work areas. Attend to the fender and bumper valance. This will help protect the paint and finish of your vehicle.



FIG 2

STEP 2

SEE FIGURE 1 & 2

- 2) Identify & locate plastic clips securing plastic shroud engine cover. Carefully pry off to remove and then set aside for reinstallation later. Remove plastic shroud and then set aside for reinstallation later.

STEP 3

- 3) Disconnect active grille harness.



FIG 3

ZROADZ GRILLE

MAIN GRILLE - #Z315811

2018 F-150 w/ FFC

GRILLE REMOVAL - CONTINUED



STEP 4

SEE FIGURES 4 & 5

4) Remove Plastic Bumper Cap Fascia as seen in Fig. 5 .
You may need to remove wheel arch moulding, if equipped.
You will need to coax panel out and off catch tabs to remove completely.

STEP 5

SEE FIGURES 6 & 7

5) Prepare to remove Active Grille Shutter Assembly from the vehicle disconnecting the screws from the top (Fig. 6) & bottom (Fig. 7).

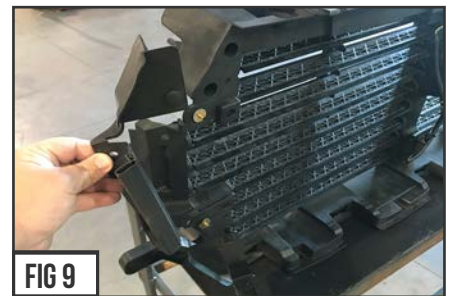


STEPS 6 & 7

SEE FIGURES 8 & 9

6) Grille Assembly should now be free to remove from vehicle.
7) Place Shutter Assembly on table & remove small plastic spacer on outside of surround.

GRILLE REMOVED



STEP 8

SEE FIGURE 10

8) Remove the protective Lower Plastic Shroud.

STEP 9

SEE FIGURE 11 & 12

9) Install supplied Extruded U-Clips to top of Shutter Assembly.



STEP 10

SEE FIGURE 13

10) You should now assemble the Forward Facing Camera with your new T-REX Grille.



GRILLE ASSEMBLY CONTINUED

ZROADZ GRILLE

MAIN GRILLE - #Z315811

2018 F-150 w/ FFC

FFC PROVISION - START



FIG 14



FIG 15

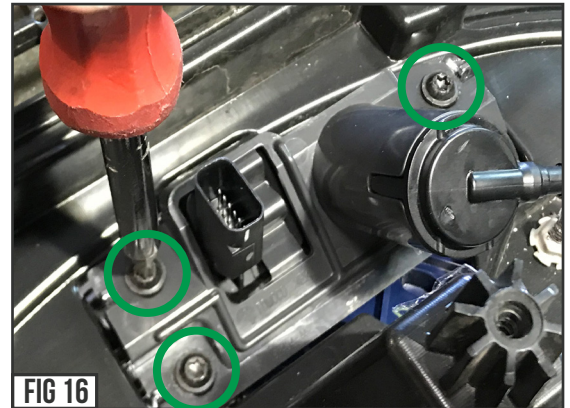


FIG 16

STEP 11

SEE FIGURES 14 & 15

11) Begin disassembly by unplugging the Forward Facing Camera (FFC) power cable and water supply hose.



STEP 12

SEE FIGURE 16

12) Unscrew, remove, and set aside the FFC Mounting Screws. There are two on each side.



FIG 17



FIG 18

STEP 13 & 14

SEE FIGURE 17 & 18

13) Flip over, OEM Grille to access Vehicle's FFC Washer cover trim piece. You must lift it out and press in the latch to release.

14) At this point the entire FFC Component should be free to remove.



FIG 19

ASSEMBLE BRACKET TO FFC



FIG 20



FIG 21



FIG 22

ASSEMBLE FFC W/ T-REX MOUNTING BRACKET.

STEP 15

SEE FIGURE 20

15) Fix the assembled FFC unit so that it mates to the T-REX Grille pre-determined mounting accommodations.

STEP 16

SEE FIGURES 21 - 22

16) Position the T-REX FFC Mounting Bracket with the FFC as seen in Figures #21 - #22. Secure in place with the provided hardware screws, Flat washers, and nylon nuts.

GRILLE INSTALL CONTINUED

ZROADZ GRILLE

MAIN GRILLE - #Z315811

2018 F-150 w/ FFC

GRILLE ASSEMBLY - START



FIG 23

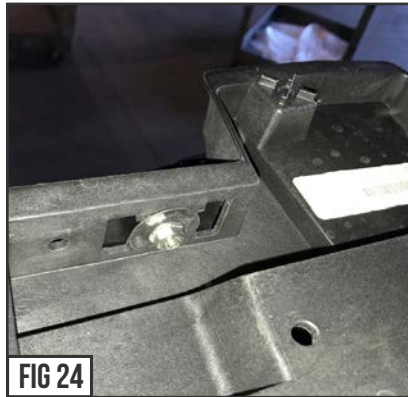


FIG 24



FIG 25

STEP 17

17) Put new supplied T-REX Grille into place and prepare to marry to the Active Shutter Assembly.

STEP 18

18) Install supplied T-REX Grille together with OEM Grille Shutter Assembly starting with the T-REX Lower Bracket Mounts using (3) #10 Lock Nuts and Fender Washers in the center in opening.

SEE FIGURES 23 & 24

STEP 19

19) Mate T-REX Grille to Shutter Assembly Top Bracket using (4) 6mm Hex Bolts and Washers.

SEE FIGURE 25



FIG 26

PRO INSTALLERS TIP



FIG 27

STEP 20 & 21

20) Check that the new T-REX Grille is tight and fully secured to Active Shutter Assembly at all fastening points.

21) Re-Install the Lower Plastic Shroud back onto the Active Shutter Assembly.

SEE FIGURES 26 & 27

STEP 22

22) Remove or cover over OEM labels located inside headlight pockets. If you do not remove or obscure over labels, these will be very visible behind the new T-REX Grille.

SEE FIGURE 27

GRILLE INSTALL START

STEP 23

23) Put into place the fully assembled T-REX Grille / Active Shutter component to vehicle. Adjust towards back of vehicle prior to securing fasteners.

SEE FIGURES 28



FIG 28

STEP 24

24) Connect Grille Shutter Wiring Harness back to Active Shutter Assembly.

SEE FIGURES 29



FIG 29

GRILLE INSTALL CONTINUED

ZROADZ GRILLE

MAIN GRILLE - #Z315811

2018 F-150 w/ FFC

GRILLE INSTALL CONTINUED



FIG 30

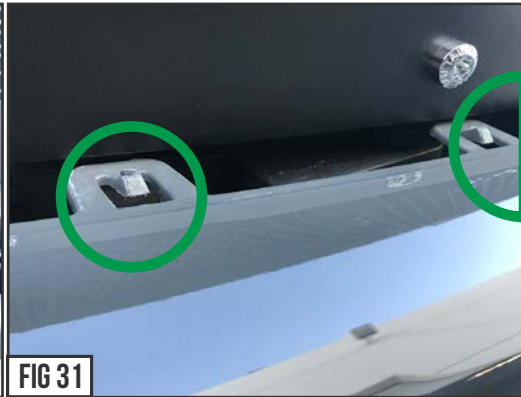


FIG 31

STEP 25

SEE FIGURES 30 - 32

25) Re-Install the Vehicle's Plastic Bumper Cap Fascia into the new T-REX Grille's pre-determined Lower Bracket Mounts as seen in Figure #30.



FIG 32

STEP 26

SEE FIGURE 32

26) Confirm plastic latches have been secured and fastened into lower brackets. NOTE you may have to pull the inside clip clasp up slightly for the clip to engage.



FIG 33

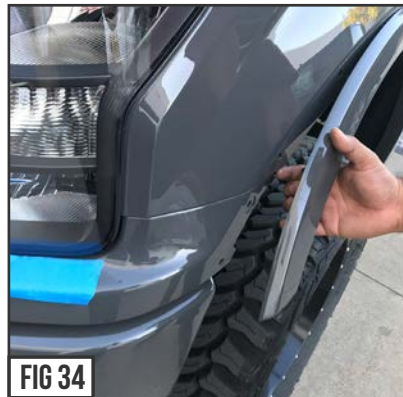


FIG 34

STEP 27 & 28

SEE FIGURE 33 & 34

27) Secure sides of Vehicle's Plastic Bumper Cap Fascia back to Vehicle's Front Fender.
28) Install wheel arch moulding back to Vehicle's Front Fender.



FIG 35

STEP 29

SEE FIGURE 35

29) Re-Install top engine plastic shroud cover back onto core support.

STEP 30

30) Reconnect negative battery terminal. Carefully close hood & check for clearance.

INSPECT YOUR WORK

STEP 31

31) At this point, you want to look over your work and examine the gap alignments around all edges and in between the new T-REX Grille and the vehicle components and body lines. Carefully close the hood for a complete visual inspection.



FIG 36

INSTALLATION COMPLETE



T-REX GRILLES PRODUCT WARRANTY

T-REX GRILLES PRODUCT WARRANTY

T-REX Truck Products warrants its grille products to be free from defects in material and workmanship for the lifetime of the grille. T-REX Truck Products warrants the finish of its grille products for a 3 year period beginning at the time of sale to the end user. These warranties are limited warranties and do not cover abuse, modification or improper installation nor do they cover finish failure caused by caustic cleaning agents, road salts or other chemicals. T-REX Truck Products reserves the right to repair or replace a defective product at its sole discretion. Any T-REX product must be returned to T-REX for warranty consideration and must be returned at the customer's expense. In the event that the product is deemed to be defective, the repaired or replaced item will be returned via a surface shipping method to the customer at T-REX Truck Products expense. No provision is made for any labor, rental car or other costs incurred by the failure of its products.

LED LIGHTING EQUIPMENT INSTALLATION / DISCLAIMER

WARNING

PLEASE CONSULT YOUR LOCAL AUTOMOTIVE ELECTRICAL PROFESSIONAL FOR INSTALLATION SERVICES AND ADVICE. T-REX IS ONLY EQUIPPED TO PROVIDE BASIC TECHNICAL ASSISTANCE DUE TO THE DIVERSITY OF VEHICLES, VEHICLE OPTIONS & MODIFICATIONS AND LIGHTING CONFIGURATION OPTIONS AVAILABLE. T-REX Truck Products cannot be held liable due to improper component installation and / or faulty wiring.

GENERAL GUIDELINES

LED Lights & LED Light Bars operate at relatively high currents and should only be installed by qualified personnel with experience in switched / relayed high draw DC Circuits.

- Light Bars are designed for use only with standard 12v DC power systems
- Light Bars are for OFF-ROAD USE ONLY. Check your local laws & regulations regarding vehicle mounted lights.
- Some Light Bars are equipped with waterproof connectors while others are simply pig-tailed
- Red Wires = POSITIVE | Black Wires = NEGATIVE
- ALWAYS install your lights on a fused circuit. Basic fusing guidelines: maximum 5A for every 10" of LED Light Bar.

GENERAL USE, INSTALL AND ADJUSTMENT TIPS

NOTE 1: T-REX Torch Series Grilles (with LED Light Bars installed), and LED Light Bars themselves are for OFF-ROAD USE ONLY.

NOTE 2: Light Bars in Torch Series Grilles are installed flush with the grille from the factory. This may or may not be the ideal angle for each light depending on the configuration of your vehicle and its options and/or modifications. To adjust the angle of your light bars simply loosen the mounting hardware on either side of each Light Bar, rotate the Light Bar to adjust the angle, then tighten the hardware once the desired angle is achieved (please be careful not to over-tighten the mounting hardware or scratch the protective powder-coat finish). It is best to adjust the angle with the vehicle on level ground with the lights facing a wall, garage door or other solid barrier at a distance of approximately 25-30 feet.

NOTE 3: Please consult a qualified automotive electrical professional for light bar wiring installation.

NOTE 4: An optional universal wiring harness (part# 639HAR1) is also available that includes high-heat & oil/fuel resistant wires, waterproof connector, 12v relay, 12v rocker switch, inline fuse holder. Our universal wiring harness significantly expedites the installation process but is not a vehicles specific "Plug & Play" product and does not eliminate the need for a professional installation.

Please contact your local T-REX dealer for more information or visit www.trexbillet.com.

GRILLE CARE INFORMATION

GRILLE CARE INFORMATION

T-REX grilles are finest in the industry but do require normal care. Wash regularly as you would when caring for your vehicles. Never use dish soap.

POLISHED FINISH

T-REX polished grilles should be waxed at the same time that you wax the vehicle and can be cleaned with soap and water. A polished finish can be cared for in the same fashion that would care for your vehicles factory chrome. Never leave wet water spots as that may leave a blemish.

MATTE BLACK FINISH

Paint warranty applies to defects in material and / or workmanship, it does not cover the matte finish surface appearance.

To enjoy the matte appearance for many years to come, please follow these owner care and maintenance tips.

Get a no-shine matte car wash soap that uses no fillers, no silicone, and won't strip your matte paint of its layer of protection.

Do not use wax, detail spray, armorall®, or any products made for normal paint. Use only products specifically developed for matte finish paint. Do not use products that are even mildly abrasive, such as polishes, glazes, or rubbing compounds. Do not use mechanical cleaners or polishers. Do not use terrycloth, cloth, or paper towels. Do not rub the finish vigorously, this will burnish the paint finish, causing a permanent shiny spot. Shiny spots cannot be removed.

Do not use commercial car wash facilities or their shine enhancement products. Most car wash brushes, large mechanized "towels," and shine enhancement products can damage matte paint.

Remove foreign substances such as insect remains, tar, and road debris using a soft applicator and a mild solvent; saturate and soak area before cleaning—rub lightly.

Hand-wash with a soft wash mitt and mild cleaning product safe for matte paint. Use microfiber cleaning cloths with alcohol-based window cleaner for basic surface clean-up.

GLOSS BLACK FINISH

T-REX Grilles with Gloss Black Powder Coated Finish may be washed regularly as you would when caring for your vehicles finish using soap and water. T-REX grilles should be waxed at the same time that you wax the vehicle. As a general rule, anything you use to clean your vehicles painted surfaces can be used to clean and maintain your T-REX grille. A Gloss powder Coated Finish can be cared for in the same fashion that you would care for your vehicles factory paint job. Never leave wet water spots as that may leave a blemish.