



9400 7TH ST. UNIT C-1  
 Rancho Cucamonga, CA 91730  
 (909) 476-7225 TECH SUPPORT  
 (909) 476-1491 FAX  
 www.volantperformance.com

**PART NO. 15857**

MAKE	MODEL	YEAR	LITER
CHEVROLET	BLAZER	91-95	5.7
	SILVERADO	88-95	5.7
	SUBURBAN	92-95	5.7
GMC	CHEYENNE	88-95	4.3/5.0/5.7
	SIERRA	88-95	5.7
	YUKON	92-95	5.7

**ACCESSORIES:**

	PART NO.
VOLANT REPLACEMENT FILTER	5117
AIR FILTER CLEANER KIT	5100
VOLANT PREFILTER	51902

**INSTALLATION INSTRUCTIONS PART NO. 15857**

READ INSTRUCTIONS THOROUGHLY BEFORE DISASSEMBLING. DO NOT SKIP ANY STEPS. ANY QUESTIONS ON A VOLANT KIT MAY BE REFERRED TO OUR TECH SUPPORT LINE AT (909) 476-7225 OR VISIT OUR WEBSITE AT WWW.VOLANTPERFORMANCE.COM

**TOOLS NEEDED FOR INSTALL:**

1. 5/16 NUT DRIVER OR FLAT HEAD SCREWDRIVER
2. 9/16 SOCKET AND RATCHET
3. 9/16 OPEN WRENCH
4. PHILLIPS SCREWDRIVER
5. 8MM OPEN WRENCH

**INSTALLATION:**

1. Loosen and remove the wing nut on the air cleaner housing and remove lid.
2. Remove the air cleaner bottom half from the vehicle. Some models have an air injector check valve, which is connected to the air cleaner. Remove the hose and clamp.
3. Loosen the two bolts from underneath the passenger side front fender well that hold the stock resonator down. Once loosen remove the resonator from the vehicle.
4. Disconnect the breather hose from the throttle body spacer and remove the stock throttle body spacer and stock breather hose from the valve cover. Remove the gasket from the throttle body and install the Volant rubber gasket.

5. **Vehicles manufactured between 92-95:** Remove the two factory studs from the throttle body with a 8 MM open wrench.
6. **Vehicles manufactured between 88-91:** Remove the throttle body stud. Install the Volant throttle body stud to the throttle body. (See Fig. A).
6. Install the 1/2" X 17 3/4" vinyl trim w/sponge to the 6" round hole on the Volant filter box.
7. Install the Volant filter box in the same location where the stock resonator box was located. Use the same two holes in the fender well to fasten the Volant filter box down using the 3/8" bolts, 3/8" washers, 3/8" lock washers and 3/8" nuts provided.
8. Install the Volant air intake duct by inserting the duct threw the 6" inch hole in the Volant filter box. Then place the throttle body stud threw the top off the Volant duct.
9. Use the 1/4" knurled nut, 1/4" fender washer and 1/4" rubber fender washer to fasten the Volant duct down to the throttle body.
10. Make sure the Volant filter box is tighten before installing the Volant 5" high flow ram filter to the Volant duct in the filter box. Install filter and tighten filter clamp.
11. Install the Volant filter box lid to the filter box using the four (4) 1/4" truss head screws and rubber washers.
12. Connect the Volant 1/2" x 12" breather hose to the Volant duct and the valve cover
13. Place the C.A.R.B. label on or near the Volant system in the engine compartment.

**WARNING: OVER TIGHTENING HARDWARE MAY ALTAR THE INTEGRITY OF THE VOLANT AIR INTAKE SYSTEM.**

**BEFORE ROAD TESTING**

1. Start engine, leaving the transmission in park and securing the parking brake.
2. Make sure to look and listen for any unusual noises or air leaks. Repair problems if needed.
3. Once completed it will be necessary to check periodically for realignment and tightening of all connections.
4. Once all tests are completed, enjoy the performance of your new Volant Air Intake System.

**CARE AND CLEANING**

Check the cotton reusable filter periodically and remove any excessive dirt build-up by tapping the filter on the ground and brushing off the loosened dirt. Clean the filter by using Volant's Filter Recharger Kit. Volant's Filter Recharger Kit is designed to restore original air flow. Re-oil every 10,000 miles without cleaning to improve filtering in sand and dirt. Clean only when dirt is very excessive or 50,000 miles.

**15857 INSTALLATION**

List of component parts (please confirm that you have all parts before starting the installation)

- 1 FILTER BOX
- 1 FILTER BOX LID
- 1 VOLANT AIR DUCT
- 1 RAM FILTER W/CLAMP
- 2 3/8" BOLTS
- 2 3/8" NUTS
- 2 3/8" LOCK WASHERS
- 1 VOLANT RUBBER GASKET
- 4 3/8" WASHERS
- 1 1/4" FENDER WASHER
- 1 1/4" RUBBER FENDER WASHER
- 1 1/4" KNURLED NUT
- 1 THROTTLE BODY STUD
- 1 1/2" X 17 3/4" RUBBER TRIM W/SPONGE
- 1 1/2" X 12" BREATHER HOSE
- 4 1/4" TRUSS HEAD SCREWS
- 4 1/4" RUBBER WASHERS



VOLANT AIR INTAKE SYSTEMS  
 PART NO.: 15857  
 INSTALLATION INSTRUCTIONS  
 WWW.VOLANTPERFORMANCE.COM  
 TECH SUPPORT: (909) 476-7225

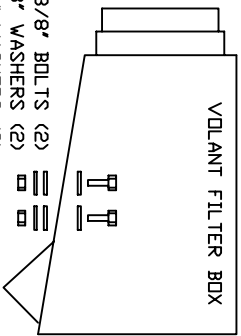


15857 PARTS LIST					
1	FILTER BOX	1	VOLANT RUBBER GASKET	1	1/2" X 12" VOLANT HOSE
1	FILTER BOX LID	4	3/8" WASHERS	4	1/4"-20 TRUSS HEAD SCREWS
1	VOLANT AIR DUCT	1	1/4" FENDER WASHER	4	1/4" RUBBER WASHERS
1	RAM FILTER W/CLAMP	1	1/4" RUBBER FENDER WASHER		
2	3/8" BOLTS	1	1/4" KNURLED NUT		
2	3/8" NUT	1	THRITTLE BODY STUD		
2	3/8" LOCK WASHERS	1	1/2" X 17 3/4" VINYL TRIM		

- (4) 1/4"-20 TRUSS HEAD SCREWS
- (4) 1/4" RUBBER WASHERS



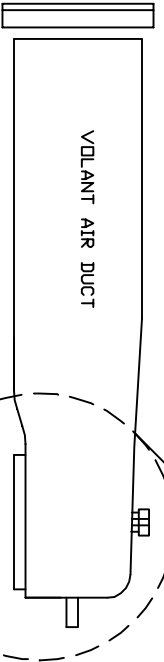
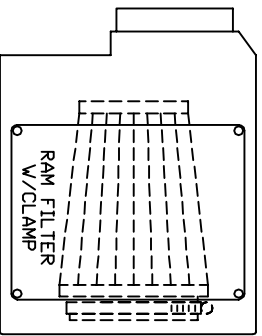
TO SIDE FENDER WELL



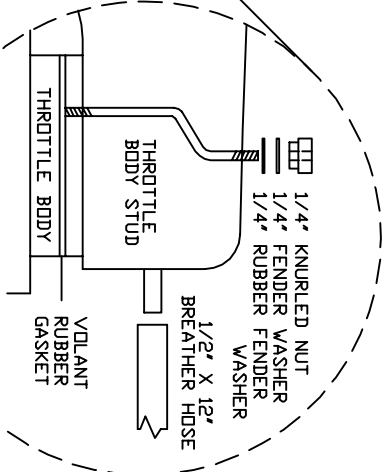
- 3/8" BOLTS (2)
- 3/8" WASHERS (2)
- 3/8" LOCK WASHERS (2)
- 3/8" NUTS (2)

1/2" X 17 3/4" RUBBER TRIM W/SPONGE

TOP VIEW



SIDE VIEW



- 1/4" KNURLED NUT
- 1/4" FENDER WASHER
- 1/4" RUBBER FENDER WASHER
- 1/2" X 12" BREATHER HOSE

FIG. A.

