

VOLANT AIR INTAKE SYSTEMS
 PART NO.: 16857151
 INSTALLATION INSTRUCTIONS
 WWW.VOLANTPERFORMANCE.COM
 TECH SUPPORT: (909) 476-7225

16857151 PARTS LIST					
1	VOLANT FILTER BOX	1	3 1/2" X 2 1/2" SLEEVE	1	BR19846C BRACKET (SHORT)
1	VOLANT FILTER BOX LID	1	3" X 2" SLEEVE	1	BR26847 BRACKET (LONG)
1	VOLANT AIR DUCT	3	1/4"-20 BOLTS	2	1/2" RUBBER GROMMET
1	VOLANT RAM AIR SCOOP	5	1/4" WASHERS	2	1/2" STRAIGHT FITTING
1	RAM FILTER W/CLAMP	3	1/4" LOCK WASHERS	1	1/2" X 2" BREATHER HOSE
2	#048 CLAMPS	4	1/4"-20 TRUSS HEAD SCREWS		
2	#056 CLAMPS	4	1/4" RUBBER WASHERS		

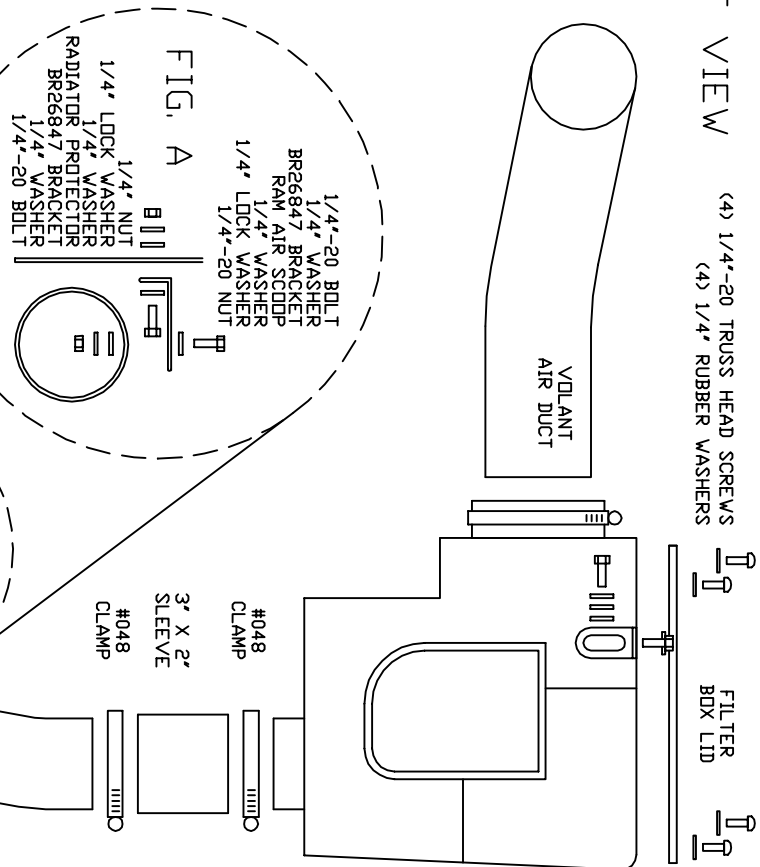
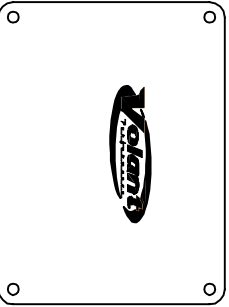
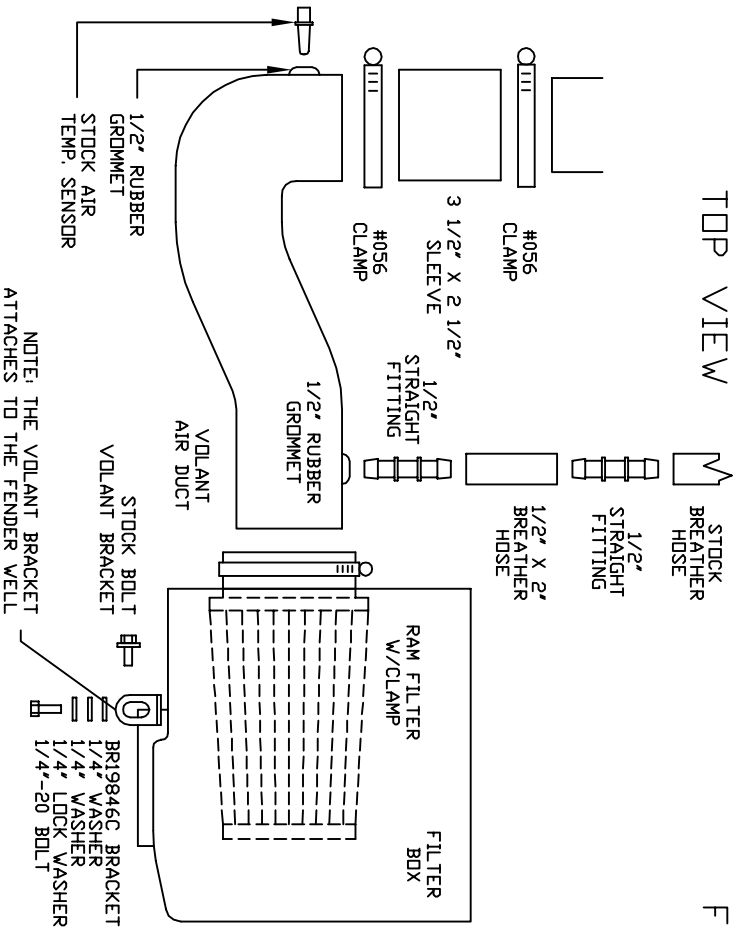


FIG. A

1/4" LOCK WASHER
 1/4" WASHER
 RADIA TOR PROTECTOR
 BR26847 BRACKET
 1/4" WASHER
 1/4"-20 BOLT

NOTE: REMOVE THE RADIA TOR PROTECTOR SIDE FLAP WITH A FLAT HEAD SCREWDRIVER. ATTACH THE VOLANT BRACKET TO THE EXISTING UPPER BOLT HOLE FOR THE RADIA TOR PROTECTOR SIDE FLAP. THEN ATTACH OTHER END OF BRACKET TO THE VOLANT RAM AIR SCOOP.