



IMPORTANT! WARRANTY AND INSTALLATION INSTRUCTIONS

Please Forward All Information to Consumer

Be sure to review the enclosed instructions prior to beginning the installation process. If you have any questions about the enclosed parts or instructions, or if you encounter a problem during installation:

CALL TECHNICAL SUPPORT: 440.891.0999 or 800.486.0999

COLOR INSTRUCTIONS ARE AVAILABLE BY PART NUMBER ON: VOLANT.COM



NEVER work on a hot engine bay.
Allow time for the vehicle to cool.

INSTALL DIFFICULTY



RECOMMENDED TOOLS & SUPPLIES

- 7mm, 8mm, 10mm, & 13mm Socket
 - Flat Head Screwdriver
 - Pry Tool
 - Philips Head Screwdriver
-

Please take time to read and understand these installation instructions.

Volant recommends that the installation of this system be performed by a qualified service center or professional installer who has the necessary equipment, tools, and experienced personnel. However, if you decide to perform this installation yourself, the use of an additional person may be required.

WARNING: Never work on a hot engine bay. Allow time for the vehicle to cool.

Check that this air intake complies with your Federal, State, and Local laws. We recommend saving your stock system.

This warranty does not extend to damaged or defect in the finish of a product or to any product, that in the opinion of Volant Performance, has been misused, damaged by accident or negligence, altered or modified in any way, faulty installation or installed contrary to Volant installation instructions, or repaired by an unauthorized service facility.

Full warranty available on <http://www.volant.com>

Please confirm that all parts are present according to the bill of materials before beginning the installation.

If something is missing call Tech Support at 440.891.099 or Toll Free: 1.800.486.0999



PREASSEMBLED MATERIALS

Volant Filter Box		Volant Air Duct		Volant Air Box Lid	
Filter (See Chart Below)	1	3/8" Fitting	1	Lid Screws	4
Filter Adapter	1	5/8" Fitting	1		

FILTER OPTIONS

Pro 5 (Oiled) Part # 5119	DryTech 3D (Dry) Part # 5160	PowerCore® (Dry) Part # 61513
---------------------------	------------------------------	-------------------------------

HARDWARE KIT

#56 Clamp	3	#64 Clamp	1	Straight Sleeve (3.5" x 3.0")	2.5"
Reducer (3.50" x 4.0")	1	6mm-16 Bolt	3	6mm-25 Bolt	1
Flat Washer (.25" x .75")	1	Flat Washer (1/4" x .625")	4	Washer Lock 1/4"	4
6mm Nut	1	1/4" Spacer	1		

*Locate the vehicle's battery and disconnect the negative battery cable.
This may reset the computer and clear old air flow data to help prevent CEL errors.*

REMOVAL INSTRUCTIONS

FACTORY INTAKE



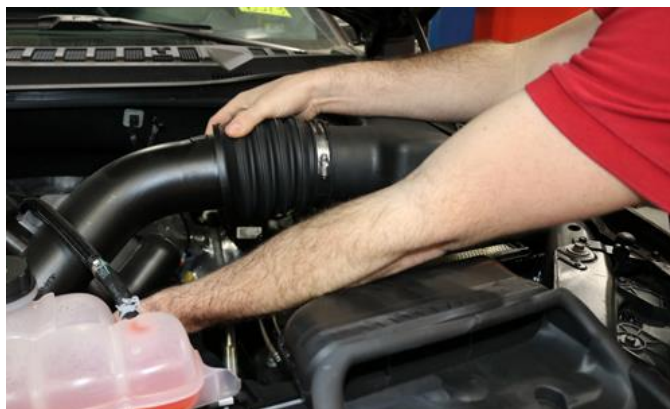
1. Loosen the throttle body clamp using a 7mm socket.



2. Release the coolant hose from the factory air duct.



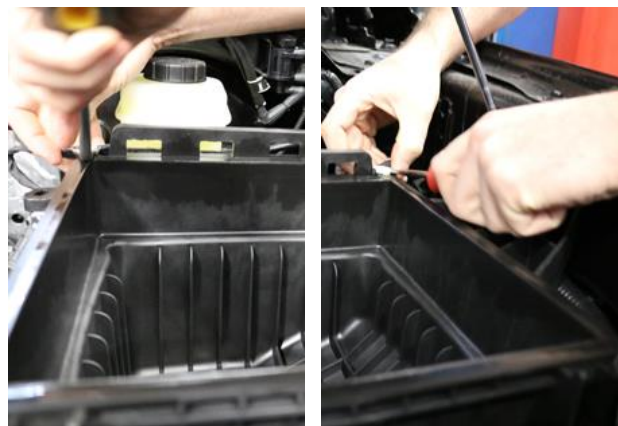
3. Disconnect both vent connections from the rear of the factory duct.



4. Unclip the air box lid and remove the factory duct and lid assembly as one piece.



5. Remove the filter.



6. Use a pry tool to remove the three wire retention clips.

Continued on Next Page ...

REMOVAL INSTRUCTIONS

FACTORY INTAKE



7. Use a ratchet and 13mm socket or wrench to remove the bolt holding the air box to the vehicle. Save bolt for **Install Step 4**.



8. Remove the two clips holding the factory scoop using a pry tool. Save clips for **Install Step 5**. Remove scoop and air box assembly from vehicle.



9. Remove the metal bushing and rubber grommet from the factory air scoop. Save metal bushing and rubber grommet for **Install Step 1**.



10. Remove the bolt holding the factory air scoop to the air box using an 8mm socket. Separate the scoop from box and save it for **Install Step 2**.

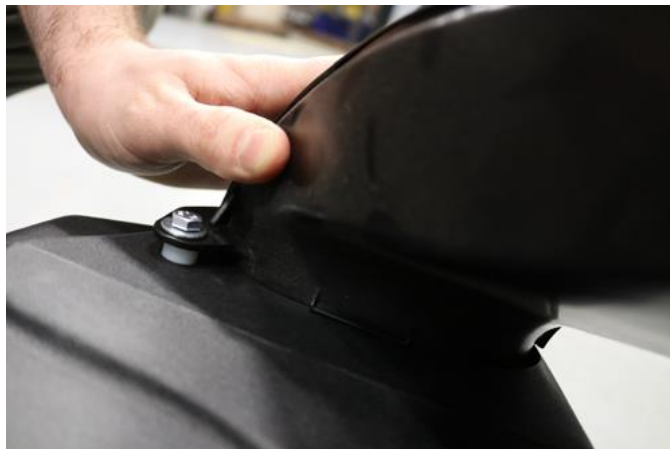
This concludes the removal of the factory intake.

INSTALLATION INSTRUCTIONS

VOLANT INTAKE



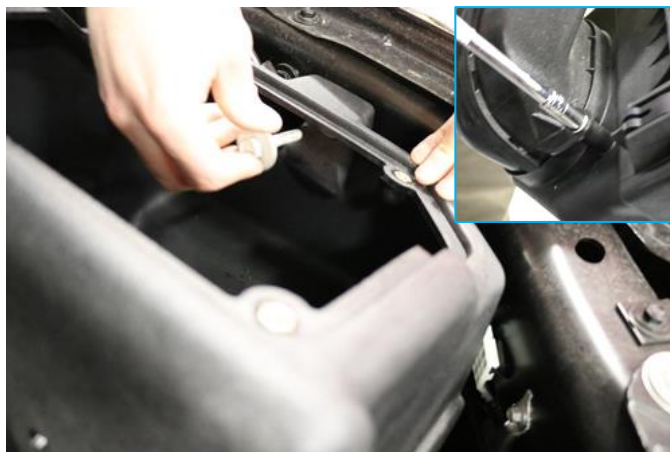
1. Put the metal bushing and rubber grommet from **Removal Step 9** into the Volant air box.



2. Attach the factory air scoop onto the Volant air box using a 10mm and socket and wrench. Using the provided hardware; place the .625" flat washer on the M6-25mm bolt through the factory mounting location of scoop. Place the provided .25" spacer between the scoop and Volant air box. On the inside of the air box place the .75" flat washer on bolt, followed by lock washer and M6 nut.



3. Install the factory air scoop, and Volant air box into vehicle making sure to place the studs on the bottom of the air box into factory grommets.



4. Use the bolt saved from **Removal Step 7** to attach the Volant air box to the fender with a 13mm socket.

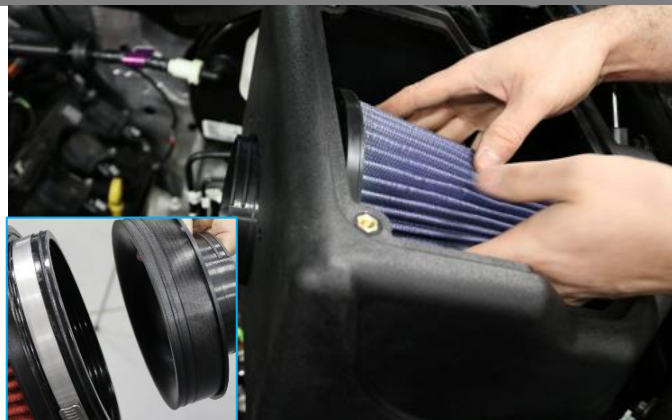
Continued on Next Page ...

INSTALLATION INSTRUCTIONS

VOLANT INTAKE



5. Re-install the factory scoop with clips saved from **Removal Step 8**.



6. Install filter adapter onto Volant air filter, then place air filter into Volant air box.



7. Secure the filter adapter to the Volant air box using a 10mm socket and three M6-16mm bolts, lock washers, and flat washers.



8. Install two #56 clamps onto the straight sleeve and place the straight sleeve on the throttle body.



9. Install one #56 clamp on small end of the reducer, and one #64 clamp on larger end of reducer. Place small end of reducer onto straight end of Volant air duct.



10. Insert the air duct onto the straight sleeve on the throttle body and large end of reducer onto the filter adapter. Adjust Volant air duct to proper fit and tighten all clamps using an 8mm socket or flat head screwdriver. **NOTE:** Also tighten the filter's clamp at this time.

Continued on Next Page ...

INSTALLATION INSTRUCTIONS

VOLANT INTAKE



11. Connect both factory quick disconnects to the Volant air duct.



12. Install the Volant lid using the provided 4 truss head screws with rubber washers and Philips head screwdriver.

*Check that this air intake complies with your Federal, State and Local laws.
We recommend saving your stock system.*

BEFORE ROAD TESTING

1. Start engine, leaving the transmission in park and securing the parking brake.
2. Make sure to look and listen for any unusual noises or air leaks. Repair problems if needed.
3. Once completed it will be necessary to check periodically, after a few heat cycles, for realignment and tightening of all connections.

Pro 5 CARE AND CLEANING

Check the Pro 5 cotton reusable filter periodically and remove any excessive dirt build-up by tapping the filter on the ground and brushing off the loosened dirt. Clean the filter by using a two stage cleaning kit to thoroughly clean and re-oil the filter. Re-oil every 10,000 miles without cleaning to improve filtering in sand and dirt. Clean only when dirt is very excessive or 50,000 miles.

Reference for Replacement Filters:

Pro 5 (Oiled) Part # 5119, DryTech 3D (Dry) Part # 5160, PowerCore® (Dry) Part # 61513