



INSTALLATION INSTRUCTIONS

ATV PLOW

Mount Kit: 64669

Application: 2002 and newer Yamaha Grizzly 660

Your safety, and the safety of others, is very important. To help you make informed decisions about safety, we have provided installation and operating instructions and other information on labels and in this guide. This information alerts you to potential hazards that could hurt you or others. It is not possible to warn you about all potential hazards associated with this product, you must use your own good judgment.

CARELESS INSTALLATION AND OPERATION CAN RESULT IN SERIOUS INJURY OR EQUIPMENT DAMAGE. READ AND UNDERSTAND ALL SAFETY PRECAUTIONS AND OPERATING INSTRUCTIONS BEFORE INSTALLING AND OPERATING THIS PRODUCT.

This guide identifies potential hazards and has important safety messages that help you and others avoid personal injury or death.

WARNING and **CAUTION** are signal words that identify the level of hazard. These signal words mean:

▲ WARNING signals a hazard that could cause serious injury or death, if you do not follow recommendations.

CAUTION signals a hazard that may cause minor to moderate injury, if you do not follow recommendations.

This guide uses **NOTICE** to call attention to important mechanical information, and **Note**: to emphasize general information worthy of special attention.

▲WARNING

SEVERE INJURY OR DEATH MAY RESULT IF YOU IGNORE ANY OF THE FOLLOWING.

- **Read the Plow Operator's Manual, the Winch Operator's Manual, and all warning labels before operating.**
- **Operate ATV at a walking speed with the blade installed. Do Not exceed 5mph (8 km/h) even with the blade up.**
- **Plow Cautiously, impact with a hidden or stationary object may cause the ATV to stop suddenly or go out of control.**
- **Do Not operate the ATV on slopes greater than 10° with the plow installed.**
- **Do Not stand or ride on the plow.**
- **Stay clear of moving parts and joints. Keep others away when operating or adjusting plow.**
- **Inspect the plow mechanism, fasteners, cable, and adjustments before operating. Replace all worn or damaged parts before operating.**
- **Lower the plow to the down position before leaving the ATV unattended.**

TOOLS REQUIRED:

Hand Drill with 5/16" Drill Bit
Serrated Blade or Saw
Vice Grips (or similar)
Ratchet
Sockets: 7/16", 1/2", and 9/16"
Wrenches: 7/16", 1/2", and 9/16"

PARTS LIST

<u>PART NO.</u>	<u>QUANTITY</u>	<u>DESCRIPTION</u>
1324	4	Flat Washer, 5/16"
1402	4	Lock Washer, 5/16"
1827	1	Bolt, 3/8" dia – 1" long
2002	4	Nut Nylock, 5/16"
6725	6	Nut Nylock, 1/4"
6779	1	Nut Nylock, 3/8"
13253	4	Bolt, 1/4" dia - 1 1/4" long
31806	4	Spacer, 1/2" long
35391	2	J-Bolt, 1/4" dia
34402	4	Bolt, 8mm dia – 20mm long
61262	2	U-Bolt, 5/16" dia – 1 1/2" wide
62674	1	Mount Bracket Right
62675	1	Mount Bracket Left
62676	1	Mount Crossmember
62845	1	J-Bolt Bracket

1. Plow Mount Assembly:

Remove the forward two bolts under the bike on both sides that attach the foot rest to the bike chassis. Take the mounting brackets (62674 & 62675) in the kit and place them over the holes. Attach the mounting brackets to the bike using four 8mm dia – 20mm long bolts, 5/16" flat washers, and 5/16" lock washers as shown in figure 1. The lock washer should be placed between the head of the bolt and the flat washer. **Do not tighten the bolts all the way**, you will do this later in the installation. Installed properly, the brackets will bend inward. Cut away any material on the skid plate with a serrated blade that may interfere with the right mounting bracket. There should be no interference with the left mounting bracket.

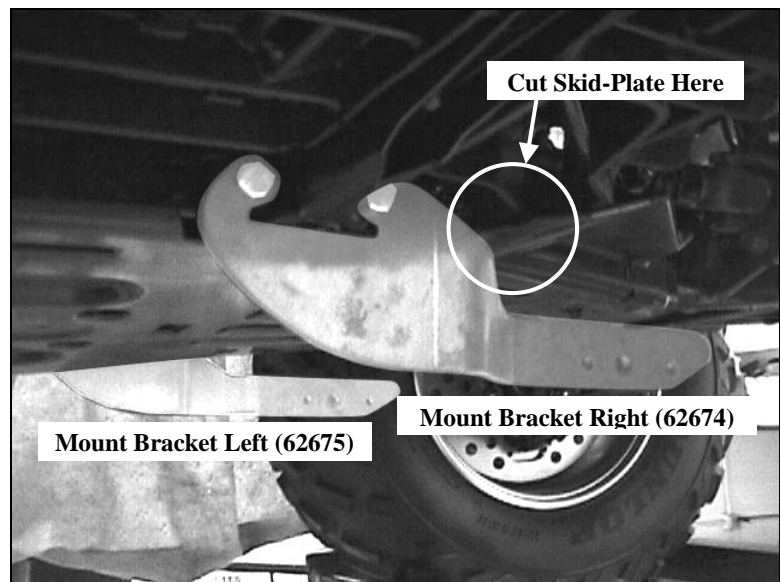


Figure 1 Mounting Brackets

▲WARNING

USE EXTREME CAUTION WHEN CUTTING MATERIAL FROM THE SKID PLATE. KEEP AWAY ALL HANDS AND LIMBS THAT MAY BE IN THE PATH OF THE BLADE. ONLY CUT THE SKIDPLATE AND NOTHING ELSE ON THE BIKE. NOT DOING SO MAY SERIOUSLY DAMAGE THE BIKE AND INJURE THE OPERATOR.

Place the crossmember (62676) between the two brackets. Insert the plow mounting pins, this will help align the mount. The top holes on the crossmember should be toward the front of the bike. Using four 1/4" bolts and nuts, attach the crossmember the brackets. Each bolt will go through a 1/2" spacer positioned between the crossmember and the brackets as shown in figure 2. Tighten all bolts down snugly. The plow mounting pins can now be removed and stored.

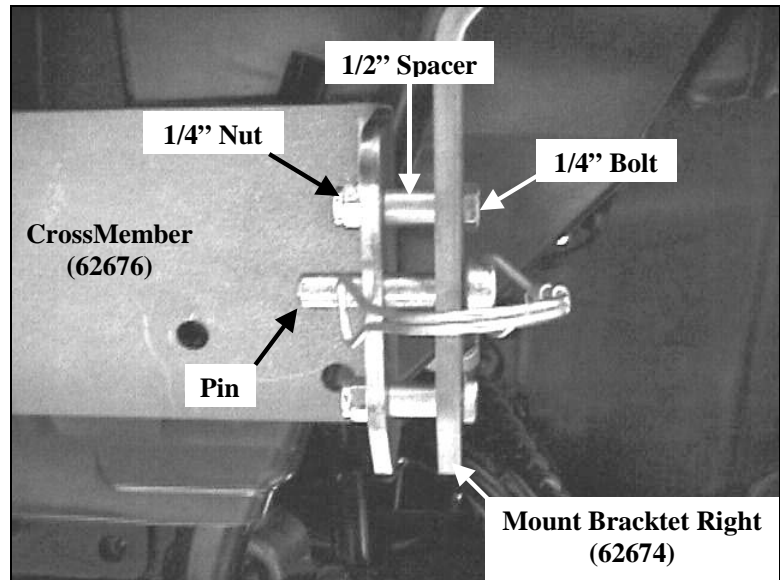


Figure 2 Mount Fasteners

Using the existing crossmember holes as locators, drill through all four crossmember holes with a 5/16" drill bit as shown in figure 3. Drill only through the skidplate and nothing else on the bike.

CAUTION

USE EXTREME CAUTION WHEN DRILLING THROUGH THE SKIDPLATE. EVERY EFFORT HAS BEEN MADE TO ENSURE THAT THE HOLE POSITIONS ON THE CROSSMEMBER WILL NOT ALLOW THE DRILL BIT TO CONTACT ANYTHING ELSE ON THE BIKE. BUT VARIATIONS IN MANUFACTURING AND INSTALLATION MAY CHANGE THAT. KEEP AWAY ALL HANDS AND LIMBS THAT MAY BE IN THE PATH OF THE ROTATING BIT. ONLY DRILL THROUGH THE SKIDPLATE AND NOTHING ELSE ON THE BIKE. NOT DOING SO MAY SERIOUSLY DAMAGE/INJURE THE BIKE AND OPERATOR.



Figure 3 Drill Through Skid Plate

Place the two 1-1/2" width U-bolts over the chassis tubing, through the skidplate, and through the crossmember as shown in figure 4. Drill more material off the skidplate if necessary. Now attach the four 5/16" nuts to the U-bolts and tighten snugly. *Now go back and tighten all four bolts on the mounting brackets as shown in figure 1.*

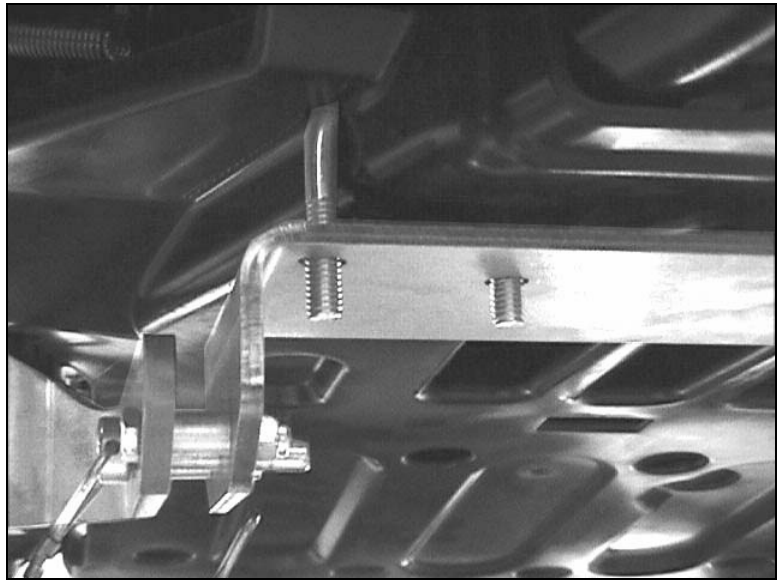


Figure 4 U-Bolt and Mount

CAUTION

FAILURE TO TIGHTEN THE MOUNTING BRACKET BOLTS MAY CAUSE SERIOUS DAMAGE TO YOUR PLOW MOUNT AND BIKE. BE SURE TO TIGHTEN THEM SNUGGLY.

The plow mount assembly should look like the one in figure 5. *Double check to make sure all the bolts are fastened tightly.* Once you have done that, your installation of the plow mount is completed. Attach your plow to the mount using the plow mount pins and proceed to one of the sections below in regards to your preferred raising mechanism.



Figure 5 Completed Mount

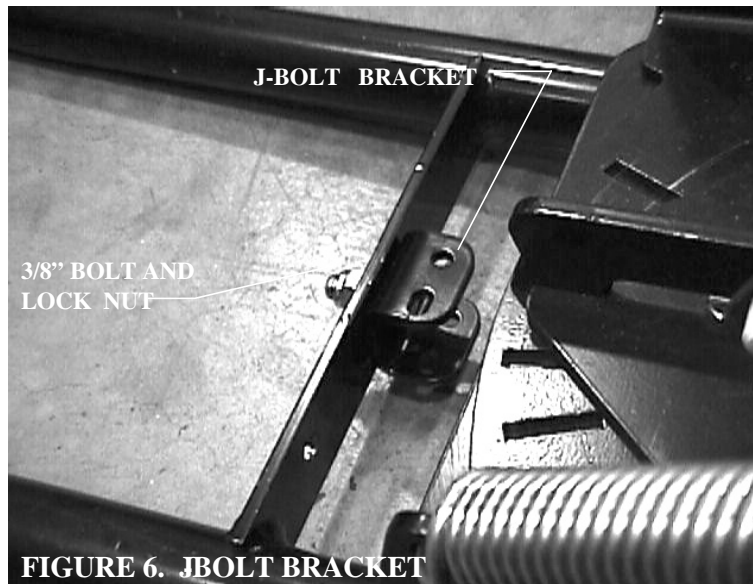
2. Plow Installation:

Slide the plow into position with the tubes under the ATV. Lift the end of the tube assembly into position so the holes in the Tube Wings line up with the 3/8" holes in the frame brackets (Figure 2). A Phillips head screwdriver may be used to align the holes. Insert both 3/8" pins and hook the retaining clips on the ends of the pins to secure the plow to the ATV.

CAUTION

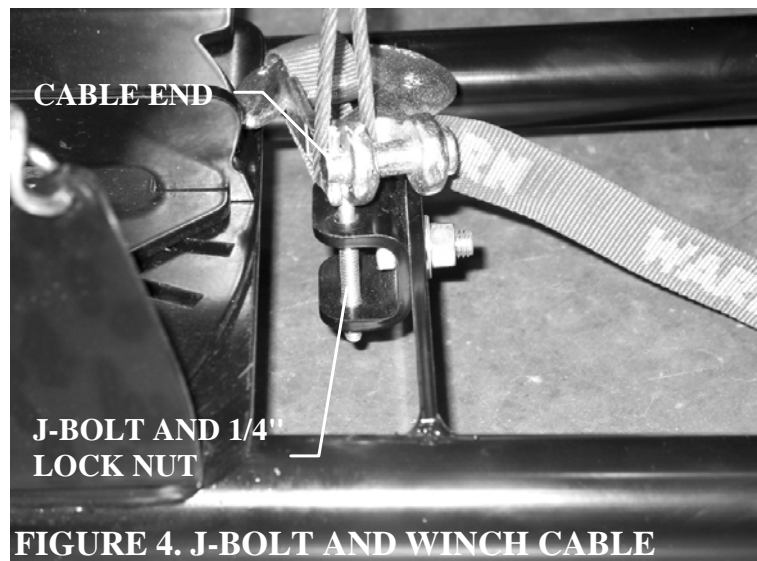
When using a winch with this plow, read your winch operator manual before proceeding with this installation. A roller fairlead must be used for lifting and lowering the plow. Cable damage will occur if a roller fairlead is not used.

Attach the J-bolt bracket to the center hole in the plow cross member using a 3/8" dia x 1" long bolt as shown in figure 6. The bracket should be mounted on the blade side of the crossmember with the side flanges parallel to the ground. Terminate the with a 3/8" dia nylock nut. Tighten the bolt and nut to recommended torque of 20 ft-lb (28 N-m).



Run the winch cable over the roller fairlead and down to the J-bolt bracket. Using a 1/4" dia J-bolt, hook the loop on the end of the winch cable and slide the threaded end of the J-bolt into the slotted hole in the J-bracket. Terminate the end of the J-bolt with a 1/4" dia nylock nut. Tighten the nut until the winch cable is snug inside the J-bolt as shown in figure 4.

Note: Do not remove winch hook installed on the end of the winch cable, simply slide it out of the way.



⚠ CAUTION

The purpose of the J-bolt is to break the connection between the plow and ATV when the plow is subjected to high forces that could damage the plow or vehicle. The plow will drop instantly if the J-bolt breaks, so be sure there are no bystanders when operating the plow.

Instances when the J-bolt might break are:

- . If the plow is raised too high and stalls.
- . If the operator is trying to lift too much material with the plow blade.

In general, do not raise the top of the plow blade above the headlights of the vehicle. If the plow stalls, stop the winch immediately and lower the plow. After pushing material with the plow, backup the ATV prior to raising it. If the J-bolt breaks, replace it with the spare hardware found in this kit. Read the Plow Operators Guide for more information.

The installation should now be complete.
Be sure to read the operator manual prior to use of this product.