



INSTALLATION INSTRUCTIONS
WARN FRONT RECEIVER
Kit Number: 65150
For Chevrolet and GMC Trucks
Models 1500HD, 2500, 2500HD and 3500

NOTE: This installation requires hole drilling. Make sure you have a drill motor and a sharp 1/2" drill bit available. Wear safety goggles.



WARNING

Drilling operations can cause flying metal chips. **WEAR SAFETY GOGGLES.** Flying metal chips can cause eye injury.

BOLT SIZE

12mm

TORQUE SPECIFICATIONS

58 lb. ft (78.6 N-m)

NOTE: Follow the step-by-step sequence for fastest installation. Do not securely tighten bolts until directed.

1. Refer to **Figure 1 and 2** for Chevrolet or **Figure 3 and 4** for GMC. Cut an opening into the bumper lower plastic piece as described with cutout centered from side to side in bumper. A suggestion is that holes be drilled in the corners of the cutout, then cut the sides with a small hand saw or Dremel type rotary tool. A sharp knife or Exacto blade works well to do finish trimming.

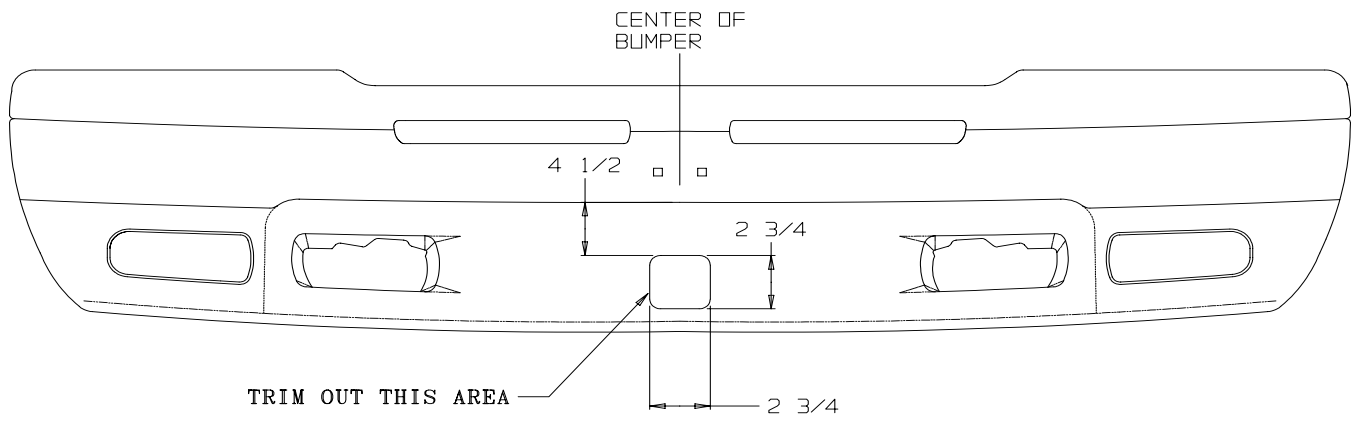


FIGURE 1 for Chevrolet



FIGURE 2 for Chevrolet

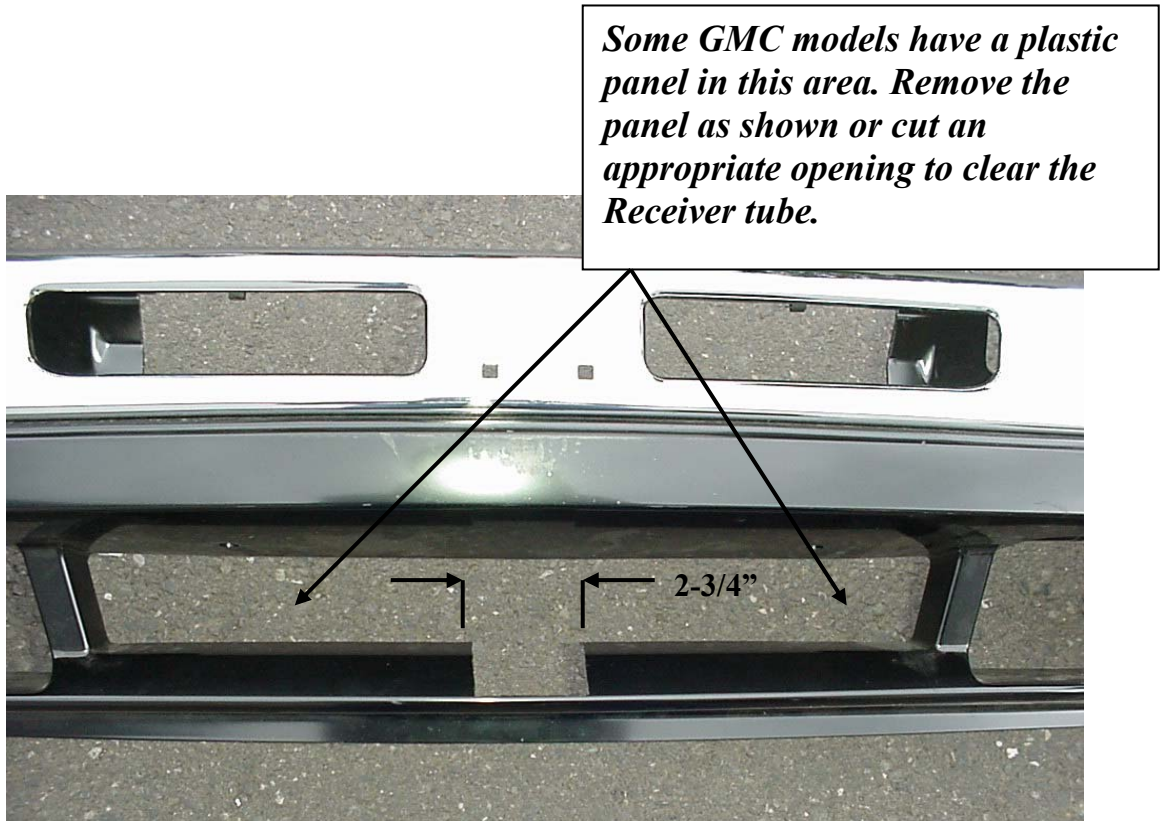


FIGURE 3 for GMC



FIGURE 4 for GMC

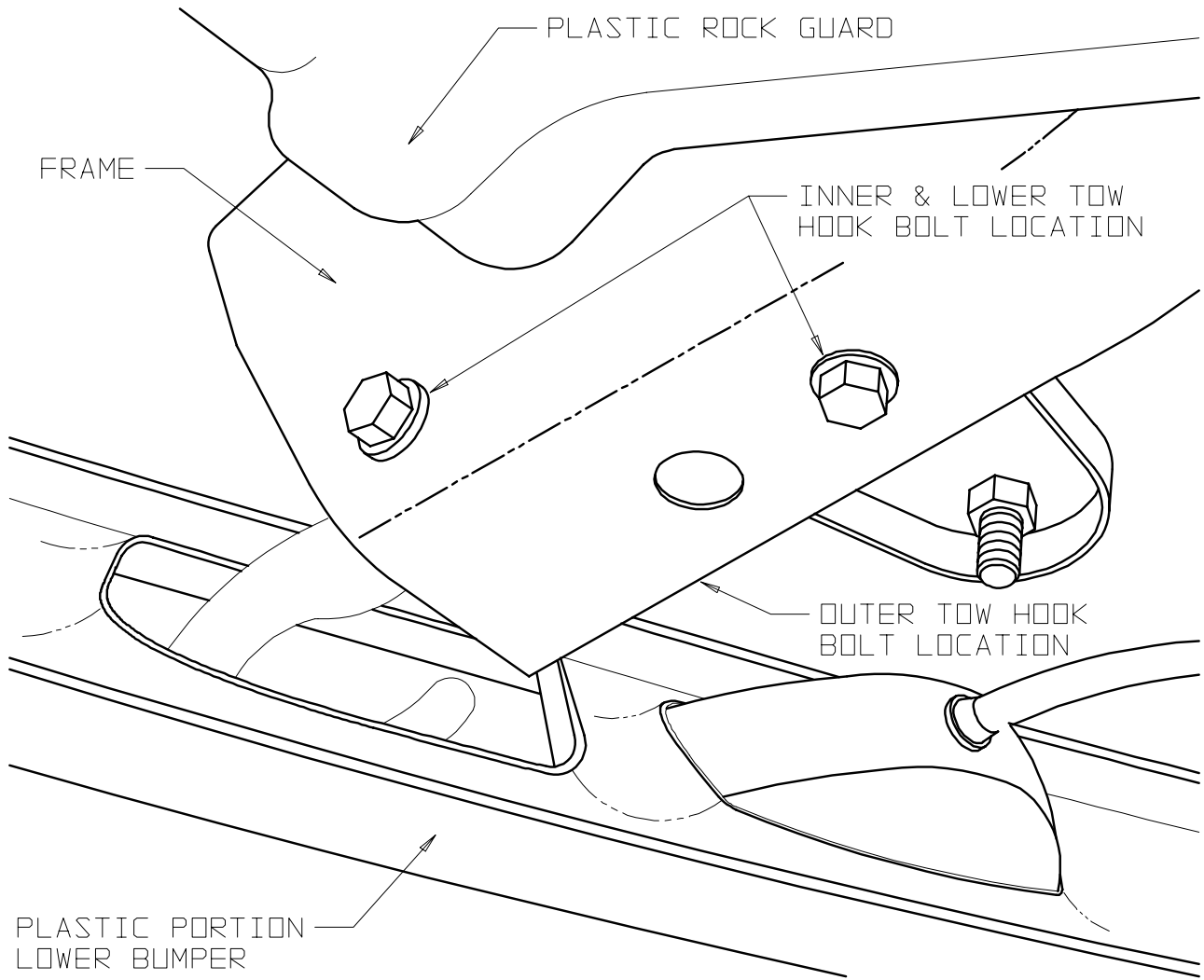


FIGURE 5

2. Remove the lower and inner tow hook bolts, then loosen the outer tow hook bolt so the tow hook may move freely as shown **Figure 5**, both sides.

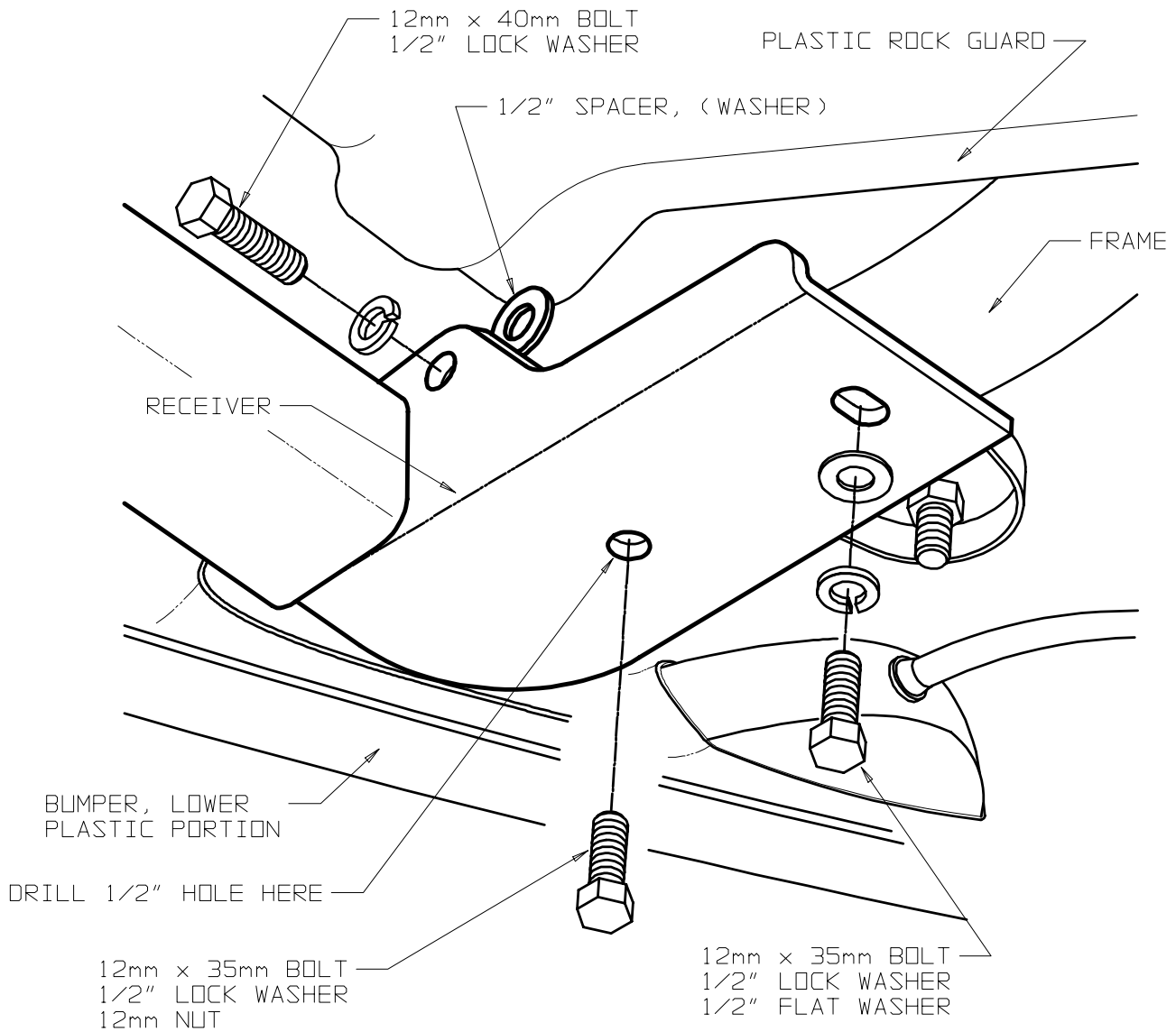


FIGURE 6

3. Lift Receiver into position as shown in **Figure 6**. Install the fasteners at the rear most location first and lightly tighten. Be sure the Receiver is centered side to side, then install the spacer washers and 40mm bolt. Drill 1/2" hole using receiver as a guide, then install 12mm x 35mm bolt. Install the 1/2" lock washer & 12mm nut through tow hook opening in bumper. Tighten all fasteners to the proper torque specification.