



INSTALLATION INSTRUCTIONS

ATV Winch Brake Kit

Part Number: 65327
Application: 3.0ci

As you read these instructions, you will see **NOTES**, **CAUTIONS**, and **WARNINGS**. Each message has a specific purpose. **NOTES** are additional information to help you complete a procedure. **CAUTIONS** are safety messages that indicate a potentially hazardous situation which, if not avoided, may result in minor or moderate injury. A **CAUTION** may also be used to alert against unsafe practice or possible equipment damage. **WARNINGS** are safety messages that indicate a potentially hazardous situation, which, if not avoided could result in serious injury. **CAUTIONS** and **WARNINGS** identify the hazard, indicate how to avoid the hazard, and advise of the probable consequence of not avoiding the hazard. **PLEASE WORK SAFELY!**

Before You Begin

Installation of the Brake Assembly will require removal of the Clutch Cap Assembly. When the Clutch Cap is removed, the gasket between the Clutch Cap and Ring Gear will need to have silicon gasket sealer applied to both sides to insure it makes a good seal when reassembled. Gasket sealer is not included in this kit and will need to be purchased separately. If the gasket is torn or damaged, replace it and use gasket sealer with the new part. WARN Seal Kit part number is PN 65473.

I. Parts List

<u>Part #</u>	<u>Description</u>	<u>Qty</u>
62478	Brake Assembly, Stage 1	1
62473	Bushing, Brake	1

II. Tools Required

- Allen Wrench: 3/16"
- Nut Driver: 5/16"
- Gasket Sealer

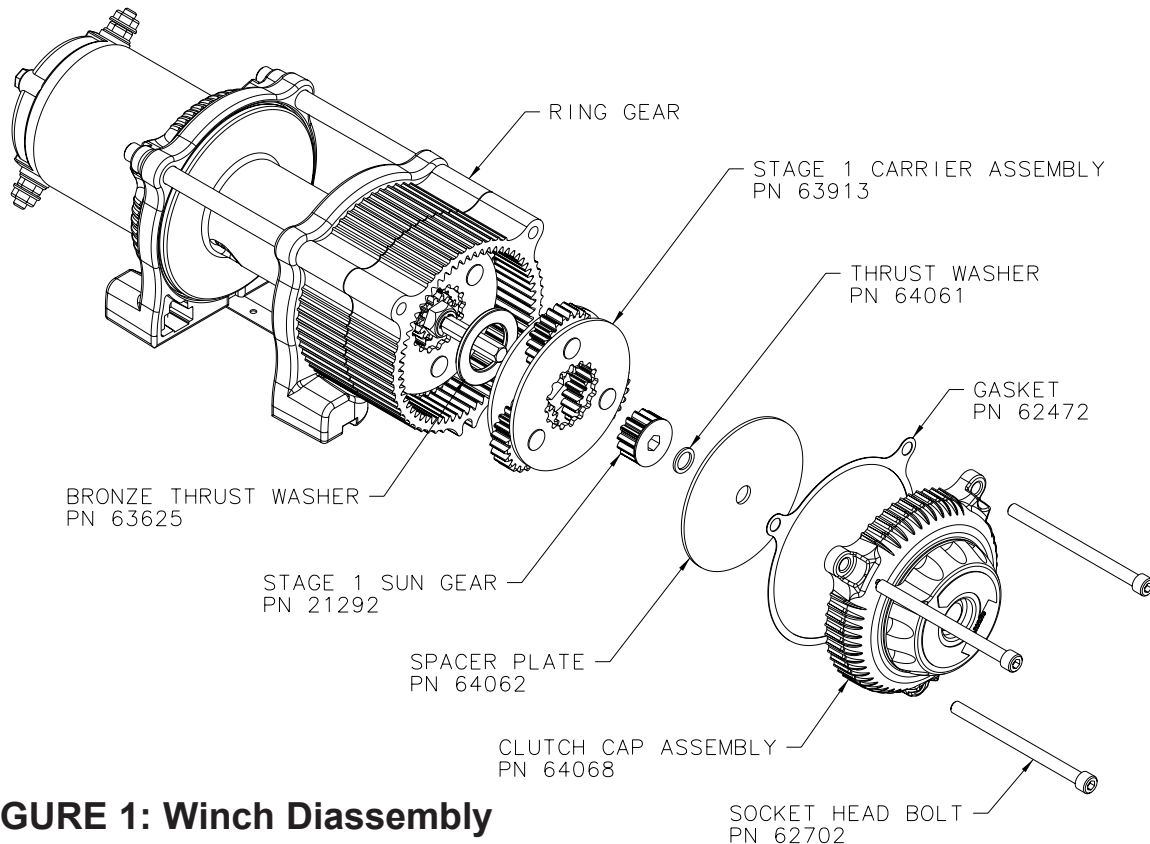


FIGURE 1: Winch Disassembly

1. CLUTCH CAP REMOVAL

Set winch feet down on a bench or work surface. Move the Clutch Dial to the **ENGAGED** position. Use a 3/16" Allen wrench to remove (3) 1/4-20 x 3.5" Socket Head Bolts from the Clutch Cap Assembly (Figure 1).

Remove the Clutch Cap from the Ring Gear. Hold the Ring gear in position against the Drum Support when removing the Clutch Cap. Do not pull the Ring Gear and Carrier Assemblies from the winch.

2. REMOVE STAGE 1 CARRIER ASSEMBLY

After the Clutch Cap has been removed, the Spacer Plate, small Thrust Washer, Stage 1 Sun Gear, and Stage 1 Carrier Assembly can be removed. None of these parts will be reused.

NOTICE: The Bronze Thrust Washer between Stage 1 and 2 will probably come out or the Ring Gear with the Stage 1 Carrier Assembly. **This Thrust Washer must be removed and reused with the Brake Assembly.**

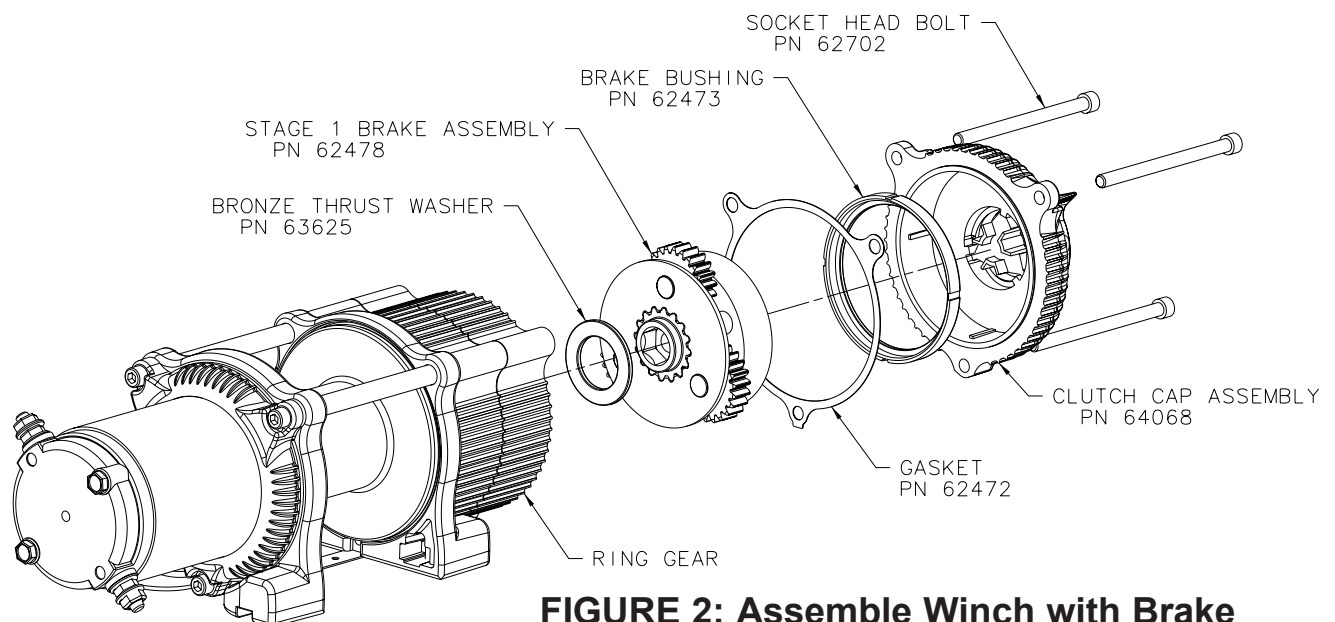


FIGURE 2: Assemble Winch with Brake

3. INSTALL BRAKE ASSEMBLY

Place the Bronze Bushing removed in the previous step over the output of the Brake Assembly (Figure 2). Insert the Brake Assembly into the Ring Gear. Hold the brake drum and slide the output over the drive shaft. Engage the hex drive shaft into the hex input gear inside the Brake Assembly. Turn the Brake Assembly as needed so the planet gears engage the Ring Gear. Slide the Brake Assembly all the way into the Ring Gear. Turn the hex drive shaft with a 5/16" nut driver as needed to get the brake output to completely engage the Stage 2 Sun Gear hex.

4. INSTALL CLUTCH CAP

Place the Brake Bushing in the Clutch cap so the lugs inside the Cap line up with the slots in the side of the Bushing (Figure 2). The Brake Bushing should fall all the way to the bottom of the Clutch Cap.

Be sure to install the Bushing so the Brake Drum can fit inside.

Apply a light coat of silicon gasket sealer to the Clutch Cap.

Position the Gasket on the Clutch Cap so the holes in the gasket line up with the holes in the cap.

Apply a light coat of silicon gasket sealer to the Ring Gear side of the Gasket.

Remove the bolt used to hold the Ring Gear in position.

Install the Clutch Cap against the Ring Gear so the bolt holes line up.

Insert all three Socket Head Bolts and **Torque to 6 ft.lb.**