



## INSTALLATION INSTRUCTIONS

### For The Remote Clutch Kit

Fits all WARN SERIES 9, 10 and 12 Winches.

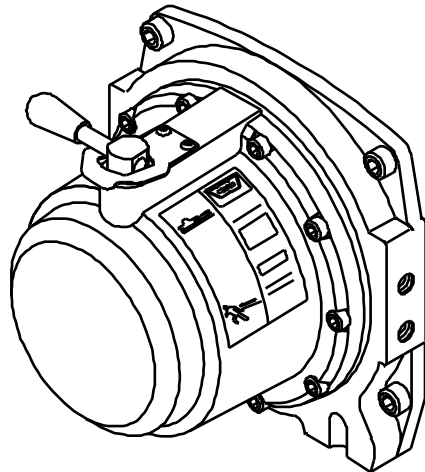
#### Items Included In this Kit

1. Remote clutch assembly
2. Instructions
3. Replacement parts list

#### Installation Instructions

**NOTE:** It is easier to install the kit with the winch removed from the vehicle. These illustrations show the assembly of the remote clutch to a SERIES 9 winch only; therefore you should carefully read these instructions before you start.

1. If the winch is equipped with a safety latch, remove the Pan Head Screws holding the latch onto the gear housing. See **Figure 1**.



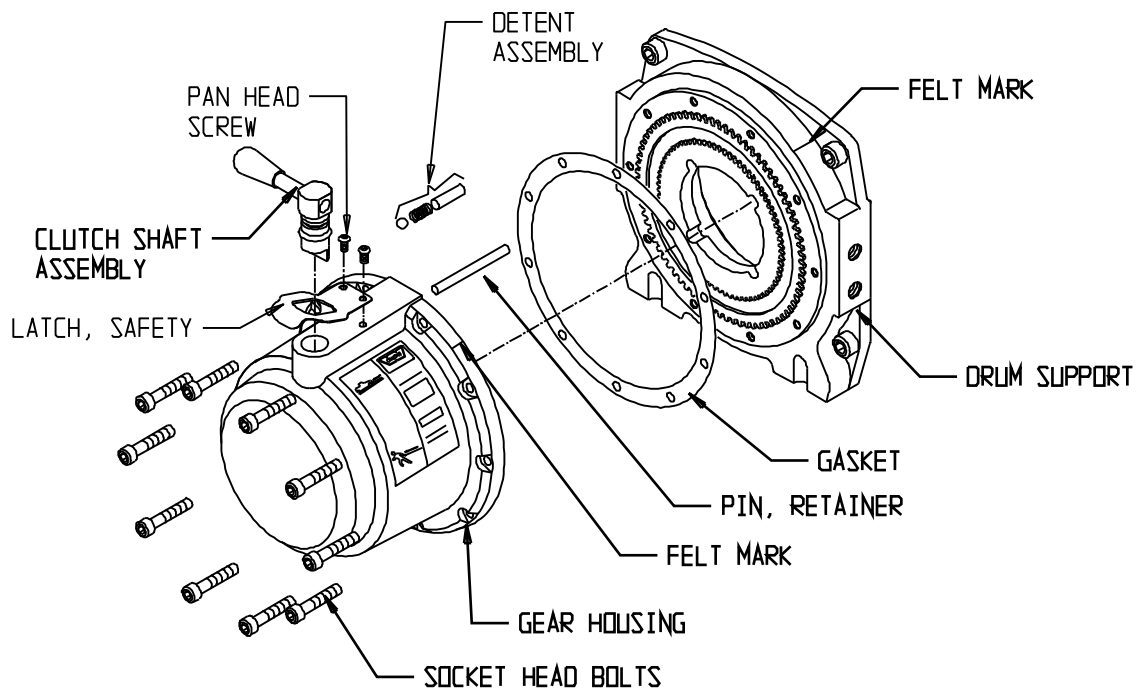
**FIGURE 1**

As you read these instructions, you will see NOTES, CAUTIONS and WARNINGS. Each message has a specific purpose. NOTES are additional information to help you complete a procedure. CAUTIONS are safety messages that indicate a potentially hazardous situation which, if not avoided, may result in minor or moderate injury. A CAUTION may also be used to alert against unsafe practice. WARNINGS are safety messages that indicate a potentially hazardous situation, which, if not avoided could result in serious injury. CAUTIONS and WARNINGS identify the hazard, indicate how to avoid the hazard, and advise of the probable consequence of not avoiding the hazard. PLEASE WORK SAFELY!

WARN INDUSTRIES, INC. 12900 SE CAPPS ROAD CLACKAMAS, OR 97015-8903  
(503) 722-1200 CUSTOMER SERVICE LINE 1-888-722-6730 FAX (503) 722-3051

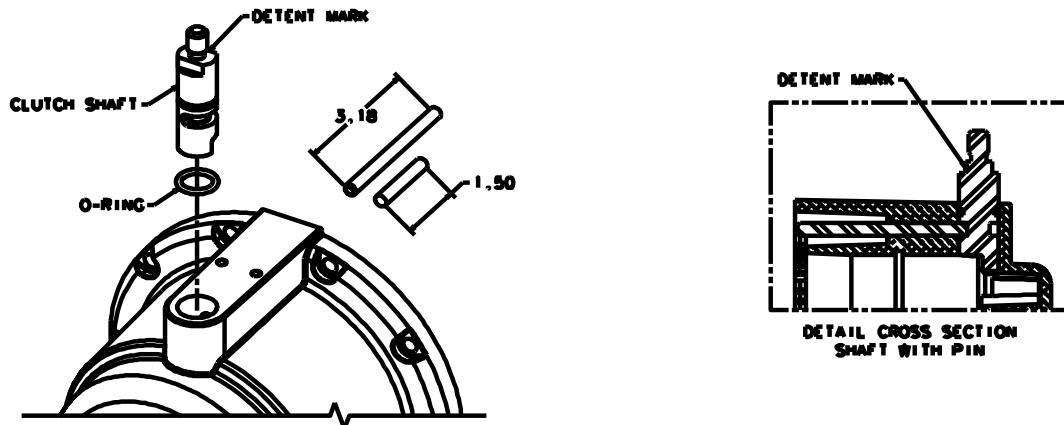
P/N66283 REV A0

2. With the winch lying horizontal, remove the ten socket head bolts holding the gear housing to the drum support. (NOTE: Before removing the gear housing, mark the placement of the housing on the drum support with a felt pen. This will make installation easier.) See **Figure 2**. On Series 10 and 12 models, mark the Ring Gear Housing and Drum support, this will insure that if they do separate you will be able to place them back in the correct orientation.
3. Carefully pull the gear housing away from the drum support. Remove the old gasket from the drum support. (NOTE: on Series 12 models, there is a ring gear between the gear housing and the drum support. The gasket between this ring gear and the gear housing should be taken off to remove the retainer pin or ball, spring and spacer.)



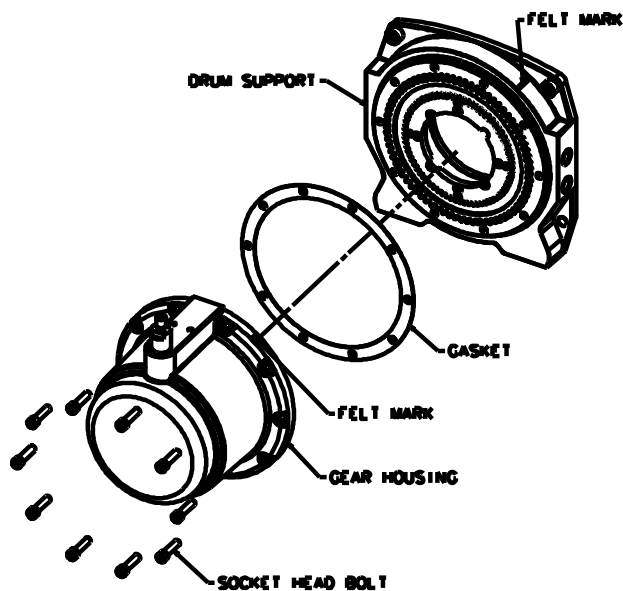
**FIGURE 2**

4. Remove the detent assembly or the retainer pin from the gear housing, depending on which winch model you have. (NOTE: On models with a detent assembly, be sure that the steel ball is taken out, so it will not fall into the gear train.) See **Figure 2**.
5. Pull the clutch shaft assembly out of the gear housing. (This shaft will not be needed for the remote clutch assembly.) See **Figure 2**.
6. Place the O-ring from the kit onto the remote clutch shaft, and apply a small amount of all purpose grease to the O-ring. Slide the clutch shaft into the gear housing, just enough to have the O-ring start to go into the hole opening **Figure 3**.
7. Install the retainer pin. (NOTE: Use the 3.18 inch retainer pin for Series 9 model. Use the 1.50 inch retainer pin for Series 10 and 12 models.) Slide in the clutch assembly into the housing until the retainer pin slides into the groove of the clutch shaft assembly. See **Figure 3**.



**FIGURE 3**

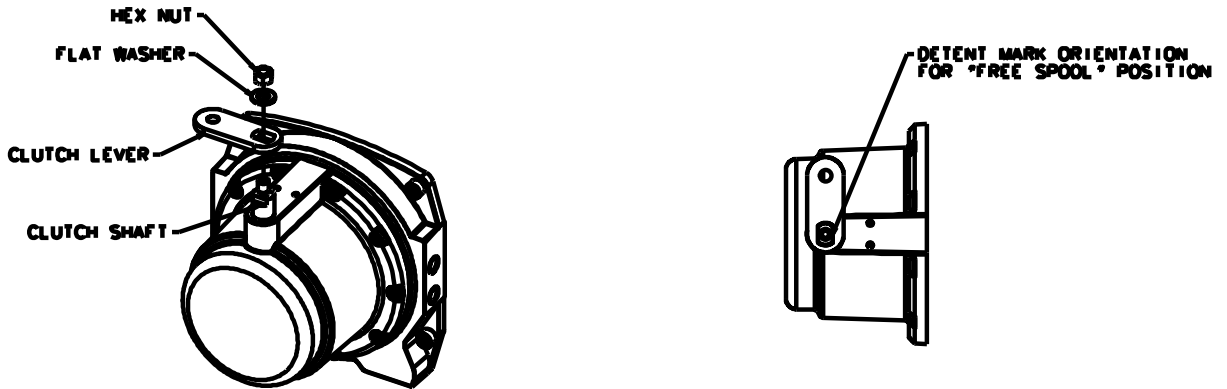
8. Install a new gasket onto the drum support, being sure to line up the holes of the gasket with the holes in the drum support. It may be easier to hold the gasket in place if you apply a light coat of grease to the gasket face. For Series 12's only, install a new gasket to the ring gear if one is removed. See **Figure 4**.
9. While keeping the felt marks lined up, bolt the gear housing back onto the drum support. Torque the socket head bolts to 100-120 in-lb. (NOTE: the gear housing may need to be lined up before bolting down. For the housing to line up properly it may be necessary to slightly rotate the ring gear inside of the gear housing. See **Figure 4**.)



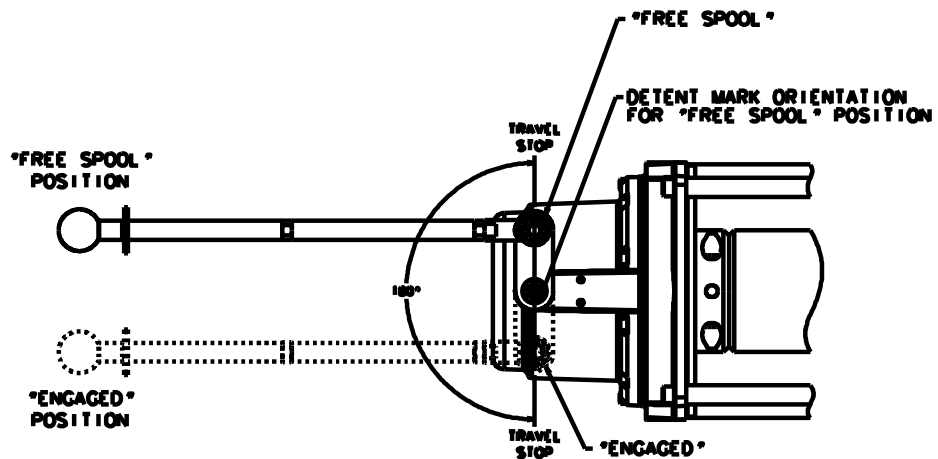
**FIGURE 4**

**CAUTION**

- Align the detent mark on the clutch shaft toward the drum of the winch. This will place the winch in the "Free Spool" position. Holding the clutch shaft in place, attach the clutch lever in the "Free Spool" position using a 3/8" flat washer and 3/8-16 hex nut. (See **Figure 5**). The clutch lever should always travel through a 180 degree arc from "Engaged" to "Free spool" positions as shown in **Figure 6**.

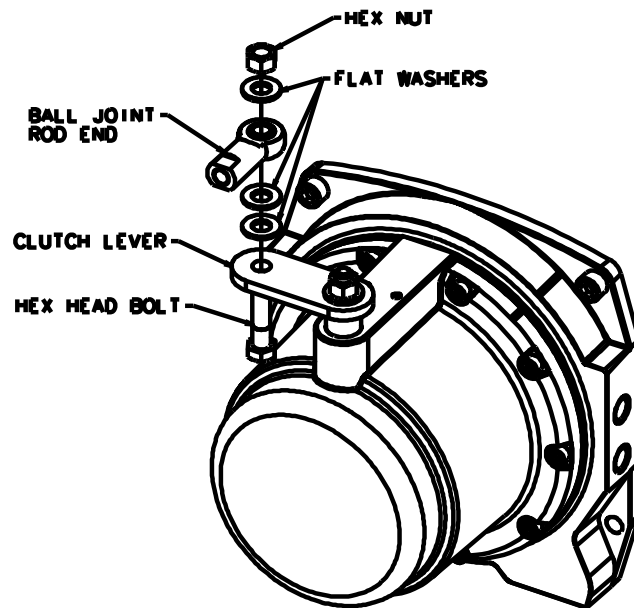


**FIGURE 5**

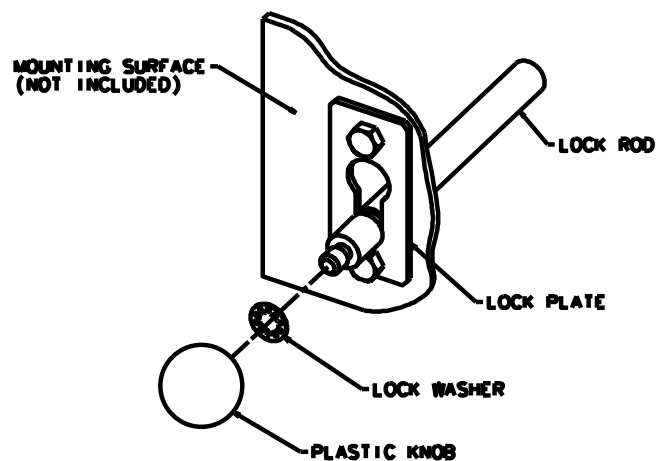


**FIGURE 6**

11. Attach the ball joint rod end onto the clutch lever using the three 3/8" flat washers, 3/8"-16 hex head nut and bolt as shown in **Figure 7**.
12. Bolt the lock plate to an appropriate mounting surface. (NOTE: Bolts for mounting the lock plate are not provided.) See **Figure 8**.
13. Screw the plastic knob onto the lock rod using the lock washer provided. See **Figure 8**.



**FIGURE 7**

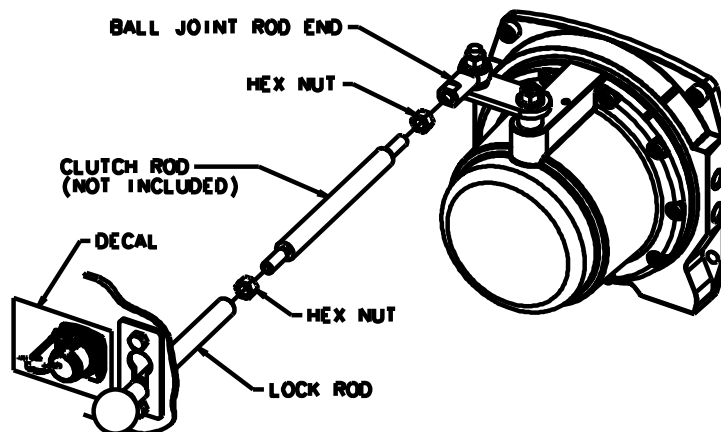


**FIGURE 8**

14. Although the clutch rod is not provided with the kit, the rod length can be determined by measuring the distance between the lock rod and the ball joint rod end. The clutch lever should be in the "Engaged" or "Free spool" position. Make allowance for the length of thread needed in the lock rod and rod end. Use 3/8"-24 UNF Thread Size for Remote Clutch Kit No. **66283**.
14. Thread the clutch rod into the ball joint rod end and tighten with the appropriate hex nut. Attach the lock rod to the clutch rod and lock with the hex nut. (See **Figure 9**). Adjust the length of the clutch rod so the clutch lever travels through the correct arc. (See **Figure 6**). The clutch lever must not be forced past the travel stop, since this will result in internal damage to the unit.



16. Test the operation of the assembly. The control should move freely through the correct travel arc; there should not be interference between the lock nuts on the clutch shaft and clutch rod. The decal can be applied to the mounting surface as shown in Figure 9, only if the clutch is "Engaged" with the control pushed in. (See Figure 6)



**FIGURE 9**



- Possible Unexpected Winch Release
- Must have complete and exact Clutch Shaft Installation
- Winch release could cause Severe Injury or Death
- Read and Follow Installation Instructions

## REMOTE CLUTCH ASSEMBLY REPLACEMENT PARTS LIST

### ORDERING INFORMATION

When ordering, please give part number and description. Parts may be obtained through local dealer or distributor.

ITEM	PART NO.	QTY.	DESCRIPTION
1	15604	1	PLASTIC KNOB
2	66290	1	REMOTE CLUTCH LABEL
3	25359	1	LOCK PLATE, REMOTE CLUTCH
4	1146	1	LOCKWASHER 3/8"
5	66284	1	CLUTCH LOCK ROD, (STANDARD)
6	2584	2	HEX NUT, 3/8-24 NF
7	16086	1	DOWEL PIN, 1/4" x 1 1/2"
8	36634	1	PIN CLUTCH, RETAINER 1/4"
9	25671	1	BALL JOINT, ROD END, (STANDARD)
10	6779	2	LOCK NUT, 3/8-16, INSERT
11	11524	4	FLAT WASHER 3/8"
12	14964	2	GASKET, (7.00" DIA)
13	66282	1	CLUTCH LEVER, DOUBLE-D
14	15605	1	O-RING SEAL
15	66281	1	REMOTE CLUTCH SHAFT
16	8160	1	HEX HEAD CAPSCREW, 3/8-16 x 1 1/2" LONG
17		1	SUPPLIED BY CUSTOMER ( ALL THREAD OR EQUIVALENT)

