



INSTALLATION INSTRUCTIONS

Trans4mer Grille Guard/Winch Mount Kit 37133 (Black) for Ford Ranger

As you read these instructions, you will see **NOTES**, **CAUTIONS** and **WARNINGS**. Each message has a specific purpose. **NOTES** are additional information to help you complete a procedure. **CAUTIONS** are safety messages that indicate a potentially hazardous situation which, if not avoided, may result in minor or moderate injury. A **CAUTION** may also be used to alert against unsafe practice. **WARNINGS** are safety messages that indicate a potentially hazardous situation, which, if not avoided could result in serious injury. **CAUTIONS** and **WARNINGS** identify the hazard, indicate how to avoid the hazard, and advise of the probable consequence of not avoiding the hazard. **PLEASE WORK SAFELY!**

NOTE: This installation requires some hole drilling when used as a winch mount. (As a grille guard only, the drilling is optional). Make sure you have a drill motor and a sharp 3/8" drill available. There can be very large variations in the bumper to frame alignment. This requires certain braces to be custom drilled to fit each vehicle.

PARTS LIST

PART NO.	QUANTITY	DESCRIPTION
67761	1	Sidemember BLK
29128	1	Tube 1.5" BLK
29132	1	Tube 2.5" BLK
67762	1	Bracket, Upper RH
67763	1	Bracket, Upper LH
37857	1	Bracket, Intermediate RH
37858	1	Bracket, Intermediate LH
67764	1	Bracket, Lower RH
67765	1	Bracket, Lower LH
37792	2	Brace
37926	2	Square Wedge Washer

TORQUE SPECIFICATIONS

5/16 inch	24 lb. ft. (32.6 N-m)
3/8 inch	30 lb. ft. (40.7 N-m)
7/16 inch	50 lb. ft. (67.8 N-m)
10mm	32 lb. ft. (49.4 N-m)
12mm	75 lb. ft. (101.7 N-m)

This **WARN Trans4mer system** can be customized to give your Ford Ranger a wide variety of looks, front end protection and winch mounting capability. The system starts with this strong two-tube Grille Guard that attaches to the truck's frame with brackets designed by Warn engineers to handle up to a 9500 lb winch. It is durable and good looking, even as a stand alone Grill Guard, but can be easily upgraded with some great options! You can add a third large size tube (Light Bar) that adds even more protection and includes tabs for mounting auxiliary lights. The tubes can be mounted in a variety of positions to achieve the look and function that you desire. You can mount a Winch Carrier

Bracket that provides a permanent mount for a Warn winch. You may also add a Receiver Bracket that will handle the Warn Multi-mount winch system, a draw bar or any other accessory that fits the standard 2 inch receiver tube. Finally, Brush Guards that protect the headlights and front corners of the truck can be easily added to any of the options above.

Note: These Instructions are divided into two parts. The first section applies to '98 – '00 model year vehicles. The second section applies to '01 and later models. Follow the step by step sequence for fastest installation. Do not securely tighten bolts until directed.

FOR '98 –'00 MODELS ONLY:

1. Remove the grille by removing the four screws located just under the hood. Then give a sharp even pull on the bottom corners of the grill to release the two retaining clips. Remove the license holder if so equipped.
2. Install the RH and LH Upper Brackets (**Figure 1**) over the top edge of the bumper using the factory bolt on the outboard holes and the supplied 5/16" bolts and nuts at the inboard holes. **Leave all bolts slightly loose until instructed later.**
3. Replace the upper tow loop bolts with the supplied 55mm (2-1/8") bolts. (**Figure 2**) Do not run the bolt all way in until the wedge washer, Intermediate Bracket and flange nut are in place. Now tighten the bolt securely, but leave the flange nut slightly loose. (If the Trans4mer is being installed only as a grille guard and a winch will not be mounted, the Intermediate Brackets are not required)

FIGURE 1

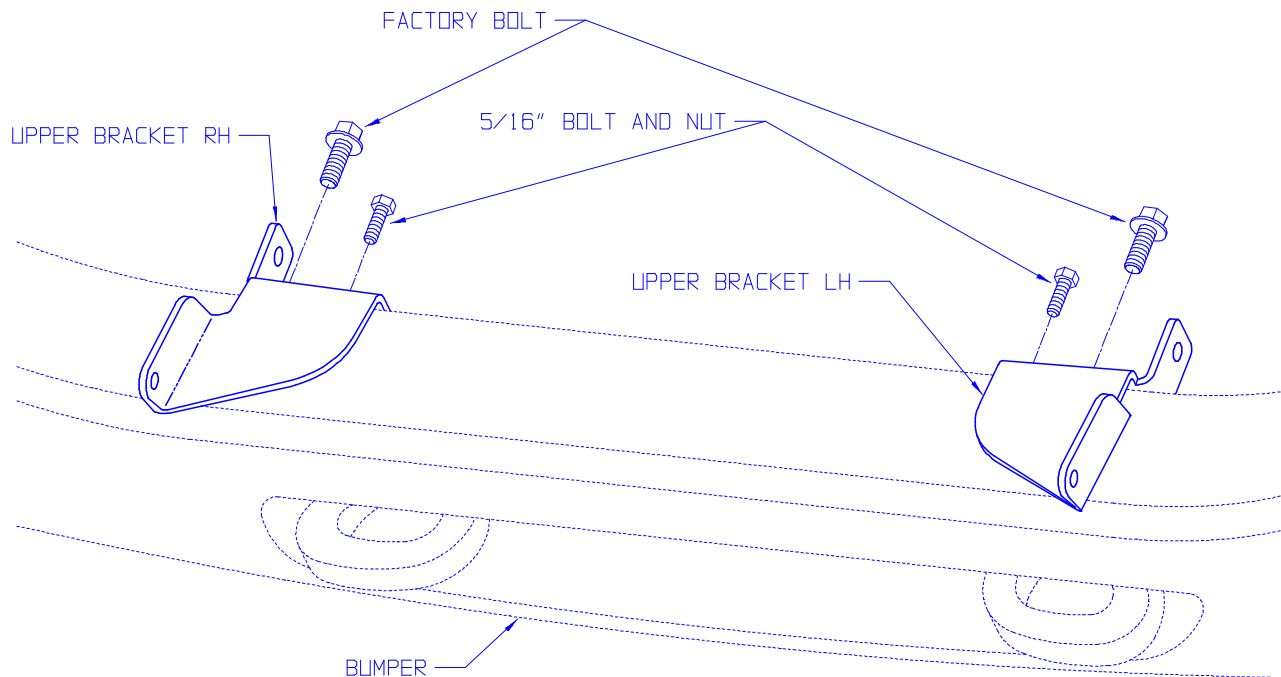
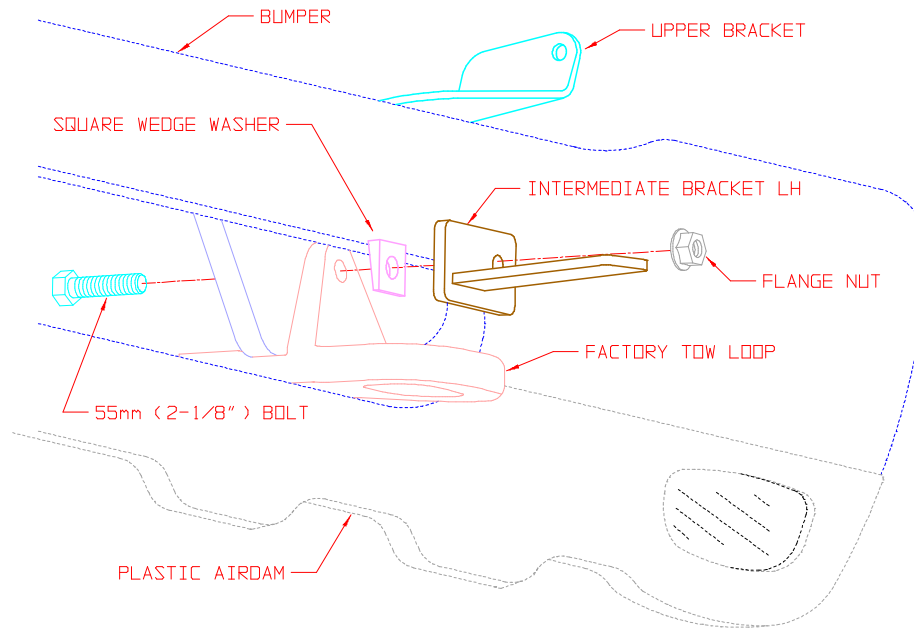
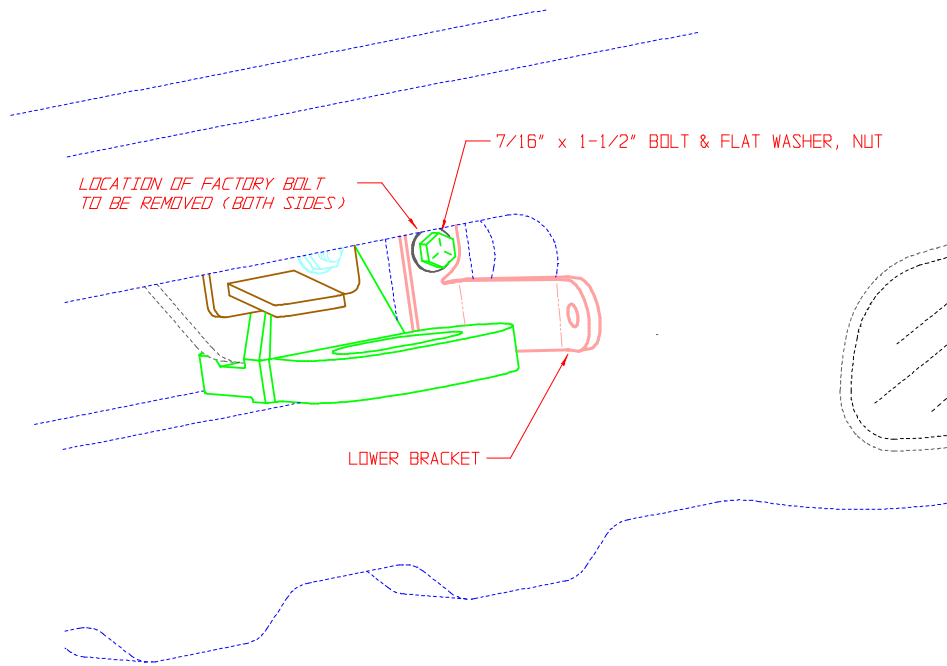


FIGURE 2



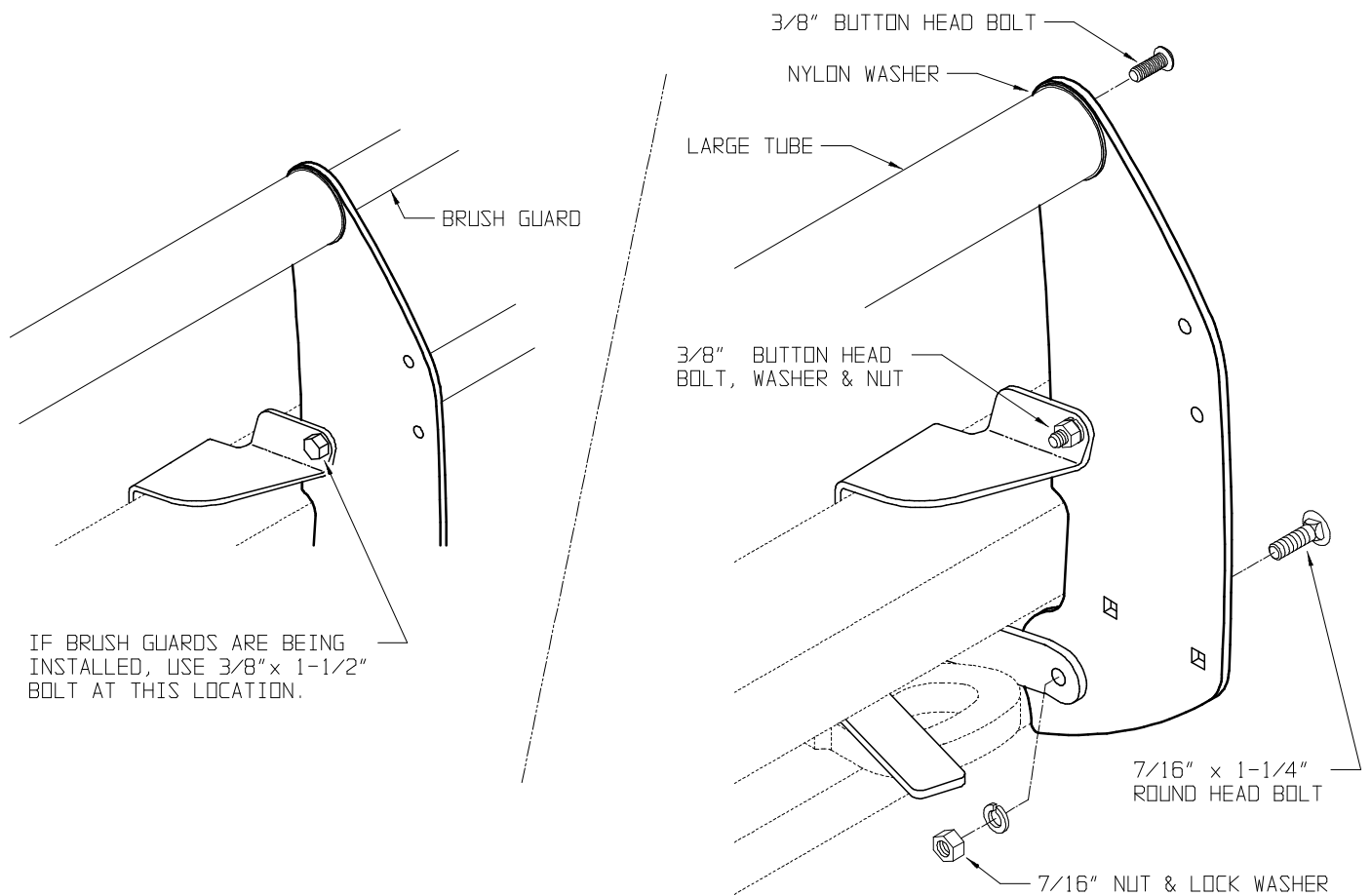
4. Remove the factory bolts, **shown in Figure 3**. To do this, the nuts must be accessed from the back side of the bumper and removed. The bolts will still be secured to the bumper by clips, but tapping the bolts forward will dislodge them from the bumper.
5. Install the RH & LH Lower Brackets at the inboard locations where the factory bolts were removed. **See Figure 3**. Use the supplied 7/16 x 1-1/2 bolts, flat washers, etc. thru the slotted bracket hole.
6. Check the factory bumper alignment very carefully, both up and down and left to right. There is plenty of adjustment available, and the alignment of the Grille Guard will depend on the bumper position.

FIGURE 3



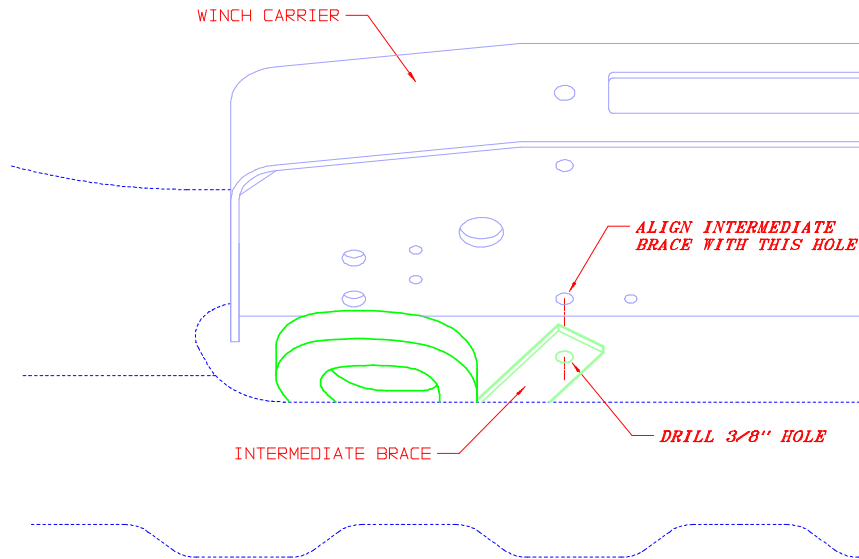
7. **If Brush Guards are being installed**, preassemble them with the Side Members and large straight Tube. Do this off to the side on the floor or a bench. A second person will be helpful. See the Instructions packaged with the Brush Guards for fastening details.
8. Install the Side Members to the outsides of the Upper and Lower Brackets. **See Figure 4.**



FIGURE 4



9. If a Winch Carrier or Receiver is being used, install between Side Members at this time.
10. Carefully align entire Grille Guard with vehicle, holding it level and straight while tightening all bolts securely. Tighten Intermediate Brackets last, while holding them up tightly against the bottom of the Winch Carrier.
11. Using the rear winch mounting holes in the Winch Carrier as a guide, drill 3/8" holes thru the Intermediate Brackets. **See Figure 5.** With winch in place use 3/8 x 1-1/2 bolts thru the Brackets, Carrier and into the winch.

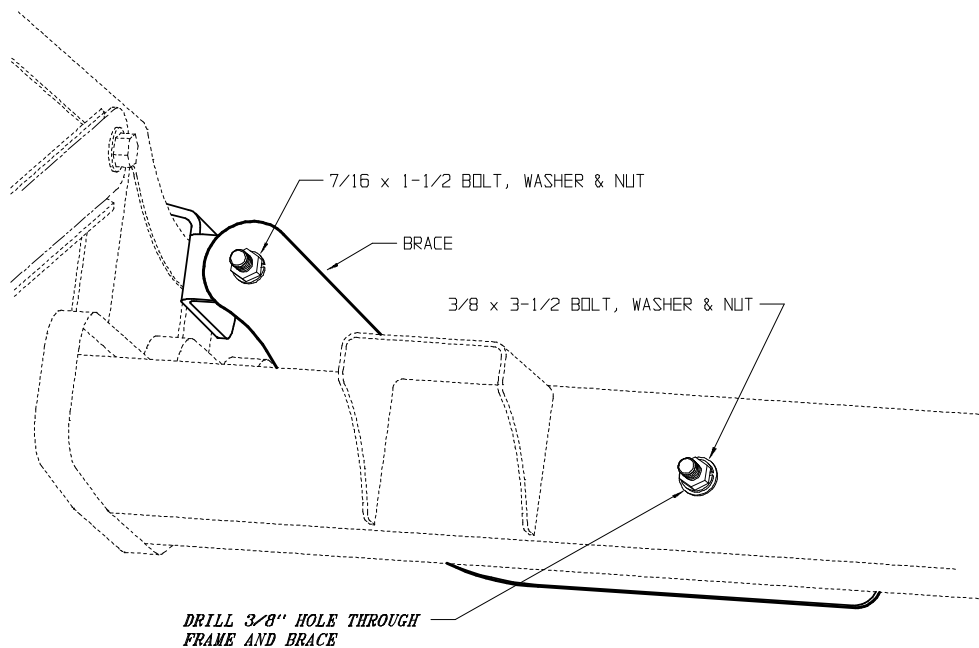
FIGURE 5



 	<p><u>WARNING</u></p> <p>Drilling operations can cause flying metal chips. WEAR SAFETY GOGGLES. Flying metal chips can cause eye injury.</p>
--	--

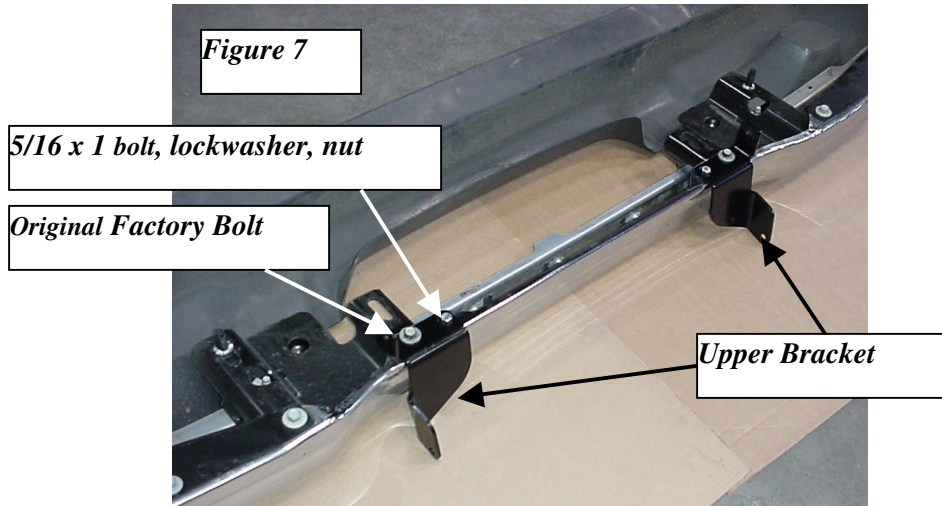
11. The Braces shown in **Figure 6** are required only when a winch will be used. To install, first remove the boxy plastic baffle piece from below the radiator. Fasten the rounded end to the tab on the back of the Upper Brackets. Swing the Brace up between the frame and radiator until the bottom edge is approximately level with the bottom of the frame. Clamp in this position while drilling a 3/8" hole thru the frame and into the Brace. Drill at the approximate center of the frame rail between the bumps. Secure with the 3/8 x 3-1/2 bolt, washers and nut. Reinstall the plastic baffle. Reinstall the grille.

FIGURE 6



FOR '01 AND LATER MODELS ONLY:

12. Remove the front bumper. It is held on by four bolts and the nuts are accessible from the back side. The nuts have 18mm heads.
13. Place the bumper on the floor or a bench. Remove the license plate and bracket if a winch carrier will be mounted.
14. Install the Upper Brackets to the top edge of the bumper as shown in **Figure 7**. Take care to adjust the brackets straight and parallel to the bumper and each other. Tighten the bolts securely.



15. Remove the upper tow hook bolts and replace with the furnished 55mm (2-1/8") bolts, but first place three flat washers under the head of each bolt. See **Figures 8 & 9**.

