



INSTALLATION INSTRUCTIONS

1.5 WINCH MOUNTING KIT

Part Number: 79840

Application: 2005-2008 Honda Recon

Your safety, and the safety of others, is very important. To help you make informed decisions about safety, we have provided installation and operating instructions and other information on labels and in this guide. This information alerts you to potential hazards that could hurt you or others. It is not possible to warn you about all potential hazards associated with this product, you must use your own good judgment.

CARELESS INSTALLATION AND OPERATION CAN RESULT IN SERIOUS INJURY OR EQUIPMENT DAMAGE. READ AND UNDERSTAND ALL SAFETY PRECAUTIONS AND OPERATING INSTRUCTIONS BEFORE INSTALLING AND OPERATING THIS PRODUCT.

This guide identifies potential hazards and has important safety messages that help you and others avoid personal injury or death. **WARNING** and **CAUTION** are signal words that identify the level of hazard. These signal words mean:

▲WARNING signals a hazard that *could* cause serious injury or death, if you do not follow recommendations. **▲CAUTION** signals a hazard that *may* cause minor to moderate injury, if you do not follow recommendations.

This guide uses **NOTICE** to call attention to important mechanical information, and **Note** to emphasize general information worthy of special attention.

▲ WARNING

INJURY HAZARD

Failure to observe these instructions could lead to severe injury or death.

- ❑ **Always** use extreme caution when drilling on any vehicle. Make sure that all fuel lines, brake lines, electrical wires, and other objects are not punctured or damaged when / if drilling on the vehicle. Thoroughly inspect the area to be drilled (on both sides of material) prior to drilling, and relocate any objects that may be damaged. Failure to inspect the area to be drilled may result in vehicle damage, electrical shock, fire or personal injury.
- ❑ **Always** wear safety glasses when installing this kit. A drilling operation will cause flying metal chips. Flying chips can cause eye injury.
- ❑ **Always** use extreme caution when cutting and trimming during fitting.
- ❑ **Always** remove jewelry and wear eye protection.
- ❑ **Never** lean over battery while making connections.
- ❑ **Never route electrical cables:**
 - Across any sharp edges.
 - Through or near moving parts.
 - Near parts that become hot.
- ❑ **Always** insulate and protect all exposed wiring and electrical terminals.
- ❑ **Always** install terminal boots as directed in installation instructions.
- ❑ **Always** use appropriate and adequate care in lifting components into place.
- ❑ **Always** insure components will remain secure during installation and operation.
- ❑ **Always** tighten all nuts and bolts securely, per the installation and operation.
- ❑ **Always** perform regular inspections and maintenance on the winch, winch mount and related hardware.
- ❑ **Never** operate this **WARN** product with damaged or missing parts.

⚠ Caution
Moving Parts Entanglement Hazard
Failure to observe these instructions could lead to minor or moderate injury.
<input type="checkbox"/> Always take time to fully read and understand the installation and Operations Guide included with this product. <input type="checkbox"/> Never operate this product if you are under 16 years of age. <input type="checkbox"/> Never operate this product when under the influence of drugs, alcohol or medications.
Read installation and operating instructions thoroughly.

Notice
Equipment Damage
<input type="checkbox"/> Always refer to the Installation and Specification Guide, supplied in the winch kit, for all wiring schematics and specific details on how to wire this WARN product to your vehicle.
Read installation and operating instructions thoroughly.

I. TABLE OF CONTENTS

Tools Required	page 2
Torque Specifications	page 2
Parts List	page 3
Winch Mounting Plate Installation	page 4
Fairlead Bracket Installation	page 5-6
Maintenance/Care	page 7

II. TOOLS REQUIRED

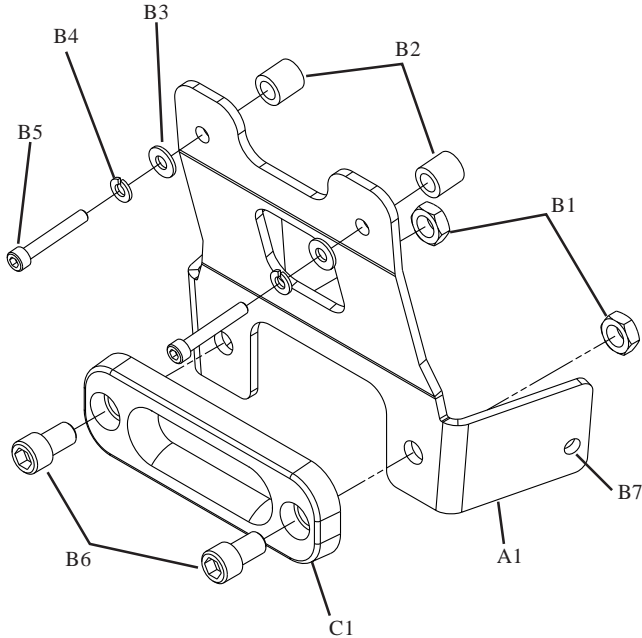
- Allen Wrench 5mm, 3/8"
- Socket 10mm, 12mm, 1/2"
- Wrench 1/2", 5/8"

III. TORQUE SPECIFICATIONS

1/4 (M6)	8 lb. ft. (10.8 N-m)
5/16 (M8)	17 lb. ft. (12.5 N-m)
3/8 (M10)	30 lb. ft. (40.7 N-m)
7/16 (M12)	50 lb. ft. (67.8 N-m)
1/2 (M14)	75 lb. ft. (101.7 N-m)

IV. PARTS LIST

Figure 1



<u>Ref.</u>	<u>Qty</u>	<u>Description</u>
A1	1	Fairlead Mounting Plate
B1	2	7/16-14 Lock Nut (not included)
B2	2	Spacer .330ID x .650OD x .375L
B3	2	1/4" Flat Washer
B4	2	1/4" Lock Washer
B5	2	M6-1.00 x 40m Socket Head Bolt
B6	2	7/16-14 x 3/4 Socket Head Bolt (not included)
B7	2	M8 x 1.25 x 25mm Hex Head Bolt
C1	1	Hawse Fairlead (not included)

IV. PARTS LIST continued:

<u>Ref.</u>	<u>Qty</u>	<u>Description</u>
D1	2	5/16-18 x 1 1/8 x 1-3/4 U-Bolt
D2	4	5/16" Flat Washer
D3	4	5/16" Lock Washer
D4	4	5/16-18 Nut
D5	2	1/4-20 x 3/4 x 1-1/4 U-Bolt
D6	4	1/4" Flat Washer
D7	4	1/4" Lock Washer
D8	4	1/4-20 Hex Nut
E1	1	Winch Mounting Bracket
F1	1	1.5ci Winch (not included)

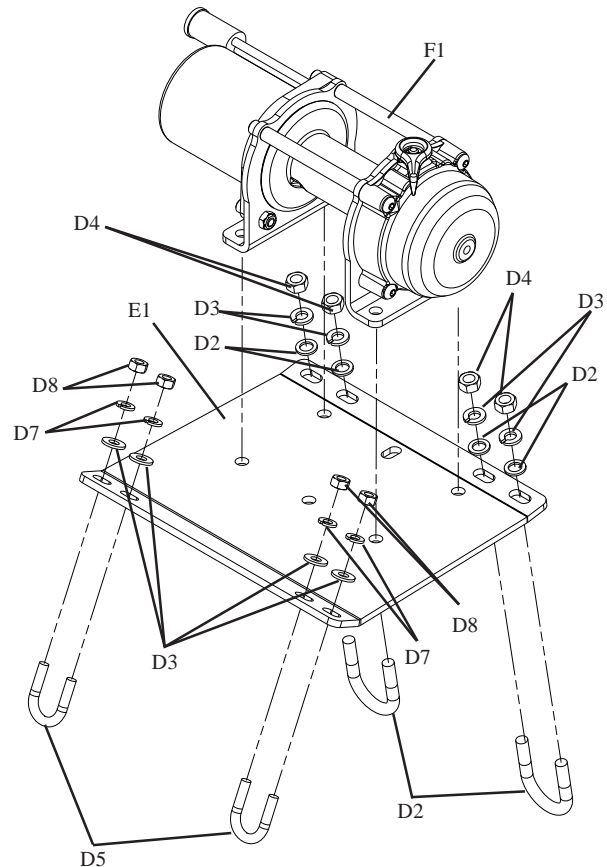


Figure 2

V. WINCH MOUNTING PLATE INSTALLATION

1. Attach winch (F1) to winch mounting plate (E1) using M8 hardware found in winch kit. See Figure 3. Tighten M8 hardware to torque specifications found on page 2.

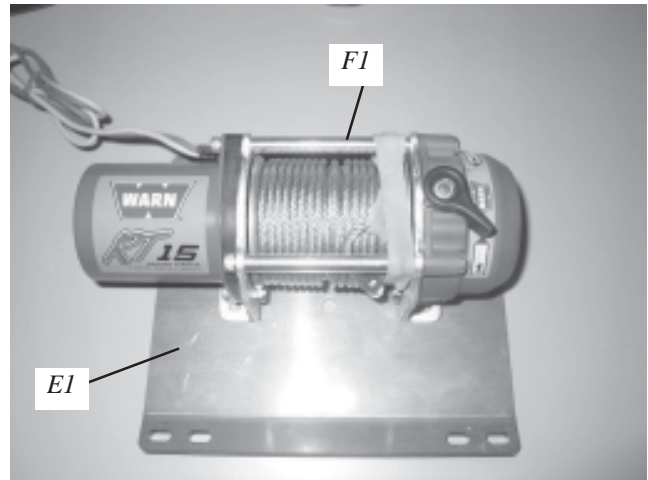


Figure 3 Mount winch to mounting plate

2. Place assembled winch (F1) and mounting plate (E1) on frame, being sure that winch motor is to the left when standing in front of ATV.

Attach mounting plate E1 to frame using u-bolts (D1 and D5), 1/4 and 5/16 nuts (D4 and D8), 1/4 and 5/16 lock washers (D3 and D7) and 1/4 and 5/16 flat washers (D2 and D6). Do not tighten at this time.

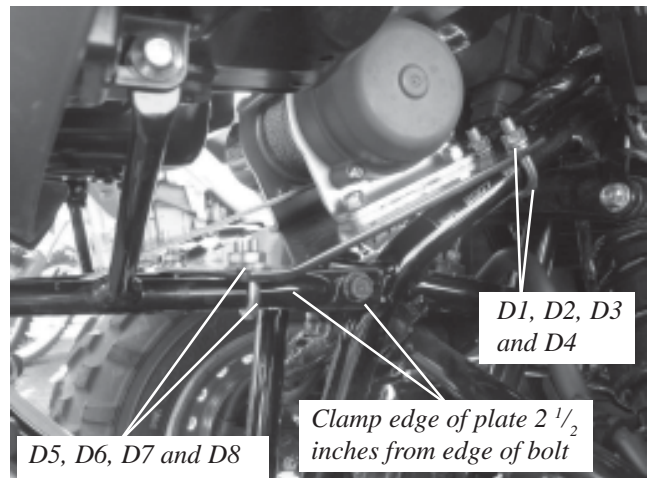


Figure 4 U-Bolt Installation

Tighten all 5/16" nuts (D4) to torque specifications on page 2.

3. This completes winch mounting.

VI. FAIRLEAD BRACKET INSTALLATION

1. Remove factory bolts from plastic cover, using 5mm allen wrench, and upper skid plate, using 12mm socket or wrench.

Note: Factory bolts removed from plastic cover will not be reused. See Figure 6.

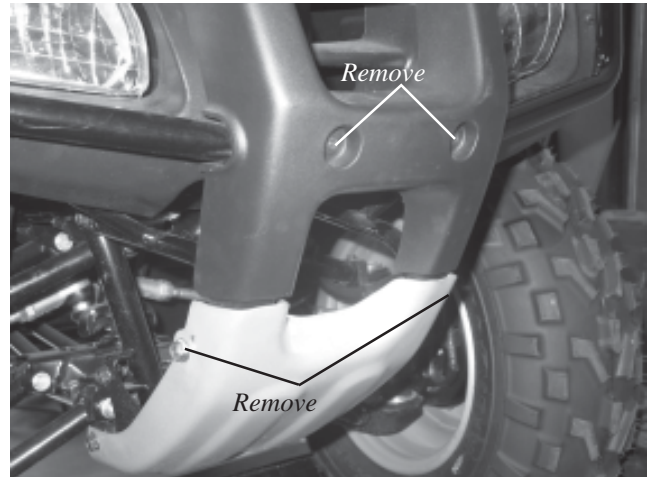


Figure 6 Honda Front View

2. Attach hawse fairlead (C1) to fairlead bracket (A1), using 7/16-14x3/4" socket head bolt (B6) and 7/16-14 lock nut (B1). See Figure 1.

3. Attach assembled fairlead bracket to bolt holes from step 1, using spacers (B2), 1/4" flat washers (B3), 1/4" lock washers (B4) and M6-1.00x40mm socket head bolts (B6). See Figure 7.

Note: Do not tighten at this time.



Figure 7 Upper Fairlead Bracket

4. Attach legs of fairlead bracket (A1) to skid plate bolt holes using skid plate bolts, M8 x 1.25 x 25mm. See Figure 8.

Firmly tighten all bolts at this time.

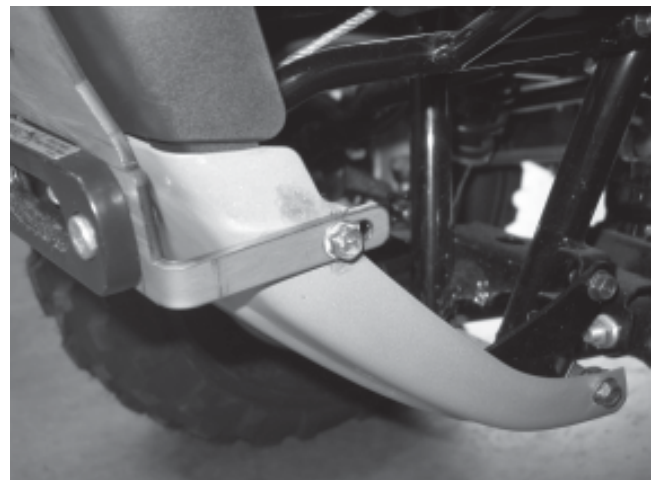


Figure 8 Lower Fairlead Bracket

FAIRLEAD BRACKET INSTALLATION

Continued:

5. Complete installation by pulling loop of wire cable through fairlead opening and attaching hook assembly as recommended in installation instructions found in winch kit. See Figure 9.
6. Wire winch according to instructions found in winch kit.

Proceed to section titled “Maintenance/Care”.



Figure 9 Completed Assembly

⚠ WARNING

READ THE VEHICLE’S OPERATOR MANUAL, WINCH OPERATOR MANUAL, AND ALL WARNING LABELS PRIOR TO OPERATION OF ATV AND WINCH.

⚠ WARNING

FAILURE TO SECURELY TIGHTEN ALL BOLTS ON THE WINCH PLATE, WINCH, AND FAIRLEAD CAN RESULT IN PRODUCT FAILURE WHICH MAY RESULT IN VEHICLE DAMAGE AND OPERATOR INJURY OR DEATH. DOUBLE CHECK THAT ALL BOLTS ARE SECURELY TIGHTENED PRIOR TO USE.

VII. MAINTENANCE/CARE

1. Inspect all parts on the winch, winch mount, and related hardware prior to each use. Replace all hardware that appears rusted or deformed.
2. Inspect all nuts and bolts on the winch, winch mount,, and related hardware prior to each use. Tighten all nuts that appear to be loose. Stripped, fractured, or bent bolts or nuts need to be replaced.
3. Check all cables prior to use. Replace cables that look worn or frayed.
4. Check all moving or rotating parts. Remove debris that may inhibit the part from moving freely.

WARNING

PERFORM REGULAR INSPECTIONS ON THE WINCH, WINCH MOUNT, AND RELATED HARDWARE. NEVER OPERATE THE WINCH WITH DAMAGED OR MISSING PARTS. FAILURE TO FOLLOW THIS WARNING MAY CAUSE VEHICLE DAMAGE AND OPERATOR INJURY OR DEATH.