



INSTALLATION INSTRUCTIONS WINCH MOUNTING KIT

Part Number: 72492

Application: Yamaha Wolverine 2006

Your safety, and the safety of others, is very important. To help you make informed decisions about safety, we have provided installation and operating instructions and other information on labels and in this guide. This information alerts you to potential hazards that could hurt you or others. It is not possible to warn you about all potential hazards associated with this product, you must use your own good judgment.

CARELESS INSTALLATION AND OPERATION CAN RESULT IN SERIOUS INJURY OR EQUIPMENT DAMAGE. READ AND UNDERSTAND ALL SAFETY PRECAUTIONS AND OPERATING INSTRUCTIONS BEFORE INSTALLING AND OPERATING THIS PRODUCT.

This guide identifies potential hazards and has important safety messages that help you and others avoid personal injury or death. **WARNING** and **CAUTION** are signal words that identify the level of hazard.

These signal words mean:

WARNING signals a hazard that *could* cause serious injury or death, if you do not follow recommendations. **CAUTION** signals a hazard that *may* cause minor to moderate injury, if you do not follow recommendations.

This guide uses **NOTICE** to call attention to important mechanical information, and **Note**: to emphasize general information worthy of special attention.

WARNING

INJURY HAZARD

Failure to observe these instructions could lead to severe injury or death.

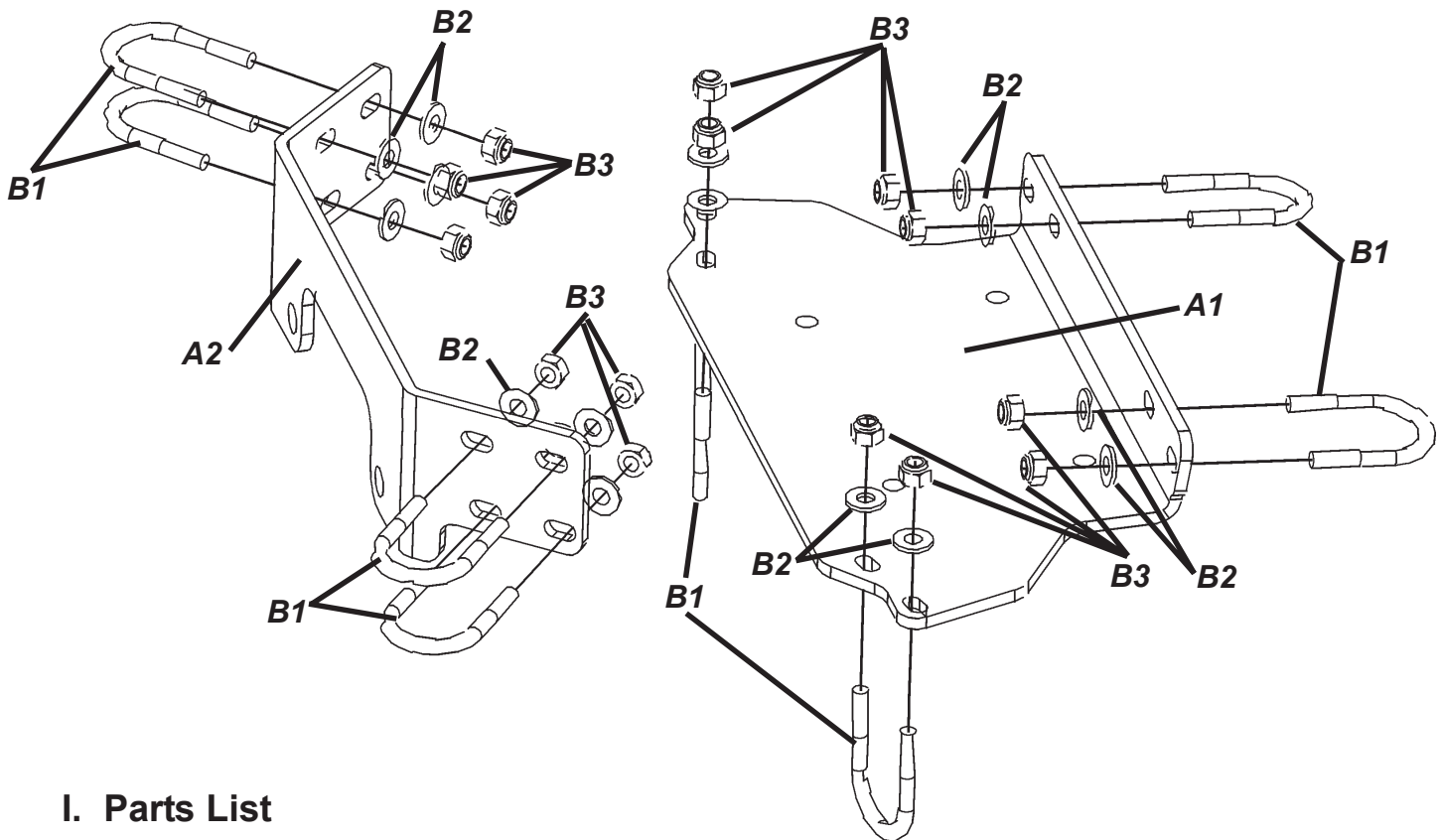
- Always** use extreme caution when drilling on any vehicle. Make sure that all fuel lines, brake lines, electrical wires, and other objects are not punctured or damaged when / if drilling on the vehicle. Thoroughly inspect the area to be drilled (on both sides of material) prior to drilling, and relocate any objects that may be damaged. Failure to inspect the area to be drilled may result in vehicle damage, electrical shock, fire or personal injury.
- Always** wear safety glasses when installing this kit. A drilling operation will cause flying metal chips. Flying chips can cause eye injury.
- Always** use extreme caution when cutting and trimming during fitting.
- Always** remove jewelry and wear eye protection.
- Never** lean over battery while making connections.
- Never route electrical cables:**
 - Across any sharp edges.
 - Through or near moving parts.
 - Near parts that become hot.
- Always** insulate and protect all exposed wiring and electrical terminals.
- Always** install terminal boots as directed in installation instructions.
- Always** use appropriate and adequate care in lifting components into place.
- Always** insure components will remain secure during installation and operation.
- Always** tighten all nuts and bolts securely, per the installation and operation.
- Always** perform regular inspections and maintenance on the winch, winch mount and related hardware.
- Never** operate this **WARN** product with damaged or missing parts.

Please read and understand these instructions completely before installation to avoid injury to yourself or damage to the vehicle or accessory.

Dealer: These instructions contain important information for future reference and must be given to the customer at time of purchase or upon completion of installation.

⚠ Caution	
Moving Parts Entanglement Hazard	
Failure to observe these instructions could lead to minor or moderate injury.	
<input type="checkbox"/>	Always take time to fully read and understand the installation and Operations Guide included with this product.
<input type="checkbox"/>	Never operate this product if you are under 16 years of age.
<input type="checkbox"/>	Never operate this product when under the influence of drugs, alcohol or medications.
Read installation and operating instructions thoroughly.	

Notice	
Equipment Damage	
<input type="checkbox"/>	Always refer to the Installation and Specification Guide, supplied in the winch kit, for all wiring schematics and specific details on how to wire this WARN product to your vehicle.
Read installation and operating instructions thoroughly.	



I. Parts List

<i>Ref</i>	<i>Description</i>	<i>Qty</i>
A1	Mounting Plate	1
A2	Fairlead Mounting Plate	1
B1	1/4-20 x 1 1/8" x 1 3/4" u-bolt	8
B2	1/4" flat washer	16
B3	1/4-20 lock nut	16
B4	5/16-18 X 3/4" winch bolt (not shown)	4

II. Installation

1. Begin by removing the front bumper located on the front of the ATV, figure 1.



Figure 1 Remove Front Bumper

2. Remove the four side 10mm bolts and two bottom 8mm bolts securing the front skid plate, figure 2. Save the fasteners as they will be used later to reinstall the front bumper and skid plate.

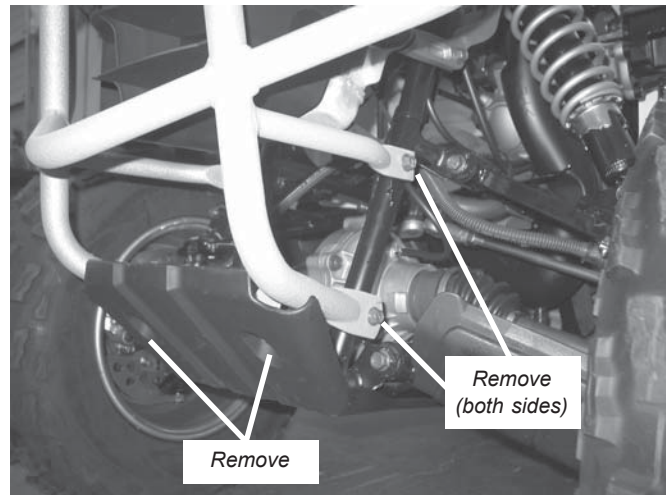


Figure 2 Remove the Four 10mm Bolts

3. Mount a Warn 1.5ci winch to the mounting bracket (A1) with the four 5/16" X 3/4" bolts found in the winch mounting kit, figure 3.

Note: The shorter 5/16" bolts must be used to mount the 1.5ci winch to the mounting plate. The longer 5/16" bolts found in the winch kit are too long and will bottom out of the winch if used.

Use 5/16" lock washers and 5/16-18 hex nuts supplied with the winch kit. Tighten the bolts to a recommended torque of 17 N-m (12 ft-lb).

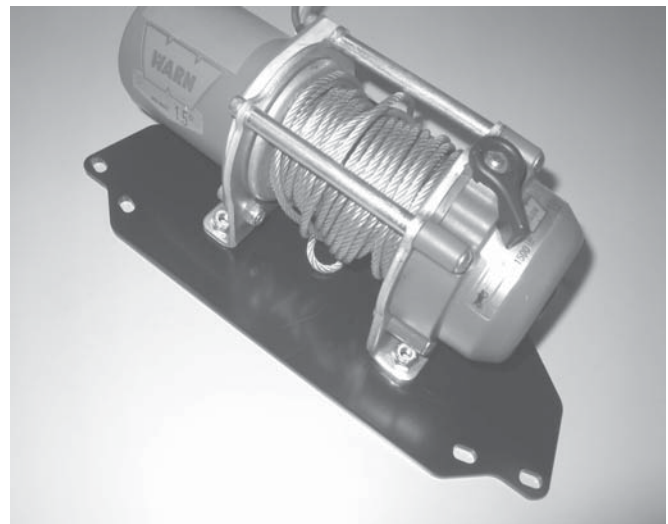


Figure 3 Install Winch and Fairlead to Mounting Plate

5. Place the winch and mounting plate assembly into position on the front bumper, figure 4 and figure 5. Install two 1/4-20 x 1 1/8" x 1 3/4" U-bolts (B1), four 1/4" flat washers (B2) and four 1/4-20 lock nuts (B3) that were supplied in the mounting kit, figure 4 and figure 5. Do not tighten fasteners at this time.

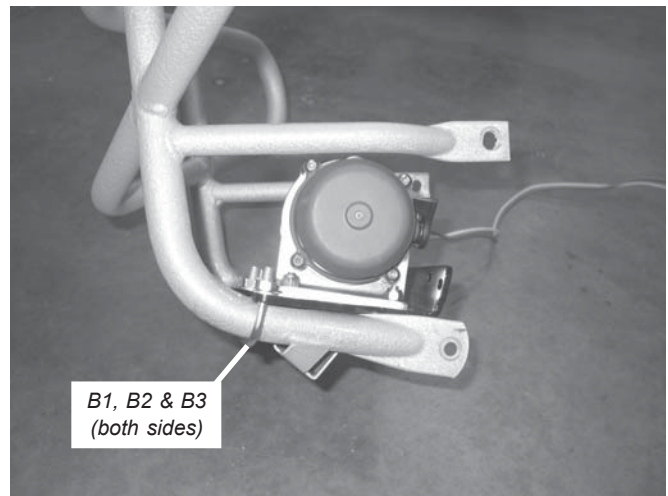


Figure 4, Place Winch, Mounting Plate and Fairlead Assembly onto Front Bumper
(Do Not Tighten Hardware at this Time)

6. Place the front bumper with attached winch assembly back onto the vehicle frame, figure 6. Reinstall the four 10mm bolts and two 8mm bolts that were removed in steps 2. Tighten these bolts at this time.

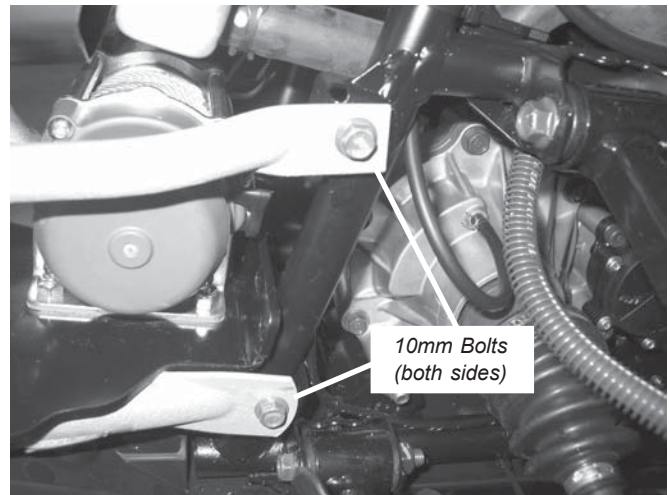


Figure 6 Reattach Front Bumper with Winch

7. Install the two remaining 1/4-20 x 1 1/8" x 1 3/4" U-bolts (B1), four 1/4" flat washers (B2) and four 1/4-20 lock nuts (B3) onto the rear vertical frame tubes, figure 7. Tighten the 1/4" U-bolts to a recommended torque of 10 N-m (7 ft-lbs).

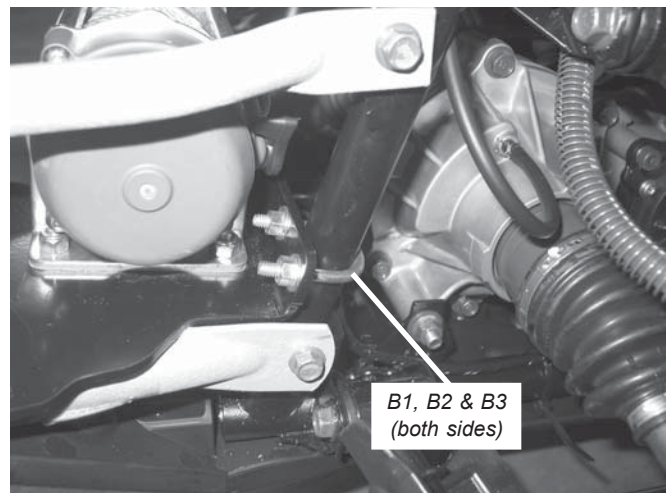


Figure 7 Attach Rear Hardware

8. Attach the fairlead mounting bracket to the front bumper using four 1/4-20 x 1 1/8" x 1 3/4" U-bolts (B1), eight 1/4" flat washers (B2) and eight 1/4-20 lock nuts (B3), figure 8. Tighten the 1/4" U-bolts to a recommended torque of 10 N-m (7 ft-lbs).

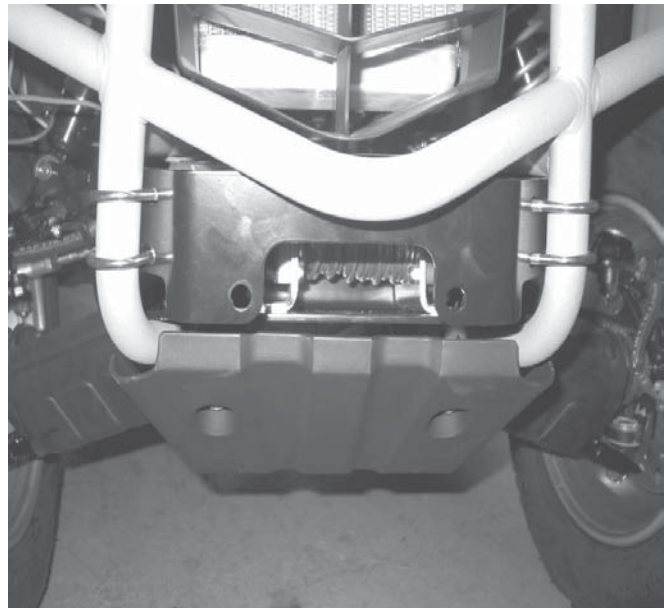


Figure 8 Fairlead mounting bracket Installation

9. Attach fairlead to the fairlead mounting bracket (A1), figure 9. Use the two supplied 3/8" dia bolts, nuts, and lock washers provided with the winch kit. Install the lock washers and nuts on the fairlead side. Tighten the two 3/8" dia bolts to a recommended torque of 34 N-m (25 ft-lb). Note: a roller fairlead is shown in the instructions. If your winch came with a casted hawse fairlead it will attach in the same location, use the hardware that came in the winch to attach it to the bracket.

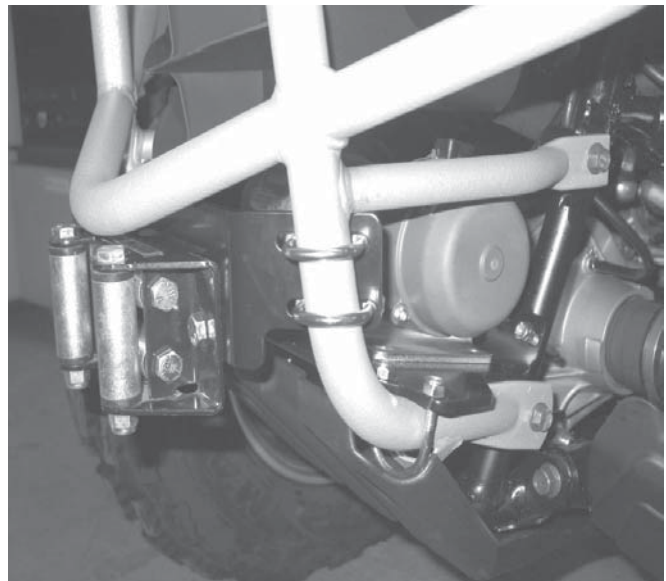


Figure 9 Completed Winch Installation

⚠ WARNING

Tighten all nuts and bolts securely. Failure to check all nuts and bolts prior to use can result in product failure which can lead to vehicle damage and operator injury or death.

Notice

Please refer to the Installation and Specification Guide, supplied in the winch kit, for all wiring schematics and specific details on how to wire the winch to the ATV.

III. Maintenance/Care

- Inspect all metal parts on the winch, winch mount, and related hardware. Replace all that appears rusted, cracked or deformed prior to use.
- Inspect all nuts and bolts on the winch, winch mount, and related hardware prior to each use. Tighten all nuts and bolts that are loose. Missing, stripped, fractured, or bent bolts or nuts need to be replaced immediately.
- Check all cables prior to use. Replace cables that are worn or frayed.
- Check all moving and rotating parts. Remove debris that may inhibit the part from moving freely.

⚠ WARNING
Failure to perform regular inspections and maintenance on the winch, winch mount, and related hardware may result in vehicle damage and operator injury or death.

⚠ WARNING
Failure to follow these installation instructions completely may void any warrantable components and result in product damage or personal injury.