



INSTALLATION INSTRUCTIONS WINCH MOUNTING KIT

Part Number: 85810

Application: BRP COMMANDER

Your safety, and the safety of others, is very important. To help you make informed decisions about safety, we have provided installation and operating instructions and other information on labels and in this guide. This information alerts you to potential hazards that could hurt you or others. It is not possible to warn you about all potential hazards associated with this product, you must use your own good judgment.

CARELESS INSTALLATION AND OPERATION CAN RESULT IN SERIOUS INJURY OR EQUIPMENT DAMAGE. READ AND UNDERSTAND ALL SAFETY PRECAUTIONS AND OPERATING INSTRUCTIONS BEFORE INSTALLING AND OPERATING THIS PRODUCT.

This guide identifies potential hazards and has important safety messages that help you and others avoid personal injury or death. **WARNING** and **CAUTION** are signal words that identify the level of hazard. These signal words mean:

▲WARNING signals a hazard that *could* cause serious injury or death, if you do not follow recommendations. **▲CAUTION** signals a hazard that *may* cause minor to moderate injury, if you do not follow recommendations.

This guide uses **NOTICE** to call attention to important mechanical information, and **Note**: to emphasize general information worthy of special attention.

▲ WARNING

INJURY HAZARD

Failure to observe these instructions could lead to severe injury or death.

- ❑ **Always** use extreme caution when drilling on any vehicle. Make sure that all fuel lines, brake lines, electrical wires, and other objects are not punctured or damaged when / if drilling on the vehicle. Thoroughly inspect the area to be drilled (on both sides of material) prior to drilling, and relocate any objects that may be damaged. Failure to inspect the area to be drilled may result in vehicle damage, electrical shock, fire or personal injury.
- ❑ **Always** wear safety glasses when installing this kit. A drilling operation will cause flying metal chips. Flying chips can cause eye injury.
- ❑ **Always** use extreme caution when cutting and trimming during fitting.
- ❑ **Always** remove jewelry and wear eye protection.
- ❑ **Never** lean over battery while making connections.
- ❑ **Never route electrical cables:**
 - Across any sharp edges.
 - Through or near moving parts.
 - Near parts that become hot.
- ❑ **Always** insulate and protect all exposed wiring and electrical terminals.
- ❑ **Always** install terminal boots as directed in installation instructions.
- ❑ **Always** use appropriate and adequate care in lifting components into place.
- ❑ **Always** insure components will remain secure during installation and operation.
- ❑ **Always** tighten all nuts and bolts securely, per the installation and operation.
- ❑ **Always** perform regular inspections and maintenance on the winch, winch mount and related hardware.
- ❑ **Never** operate this **WARN** product with damaged or missing parts.

⚠ CAUTION
Moving Parts Entanglement Hazard
Failure to observe these instructions could lead to minor or moderate injury.
<input type="checkbox"/> Always take time to fully read and understand the installation instructions, Operations Guide, and Guide to Winching included with this product. <input type="checkbox"/> Never operate this product if you are under 16 years of age. <input type="checkbox"/> Never operate this product when under the influence of drugs, alcohol or medications.
Read installation and operating instructions thoroughly.

Notice
Equipment Damage
<input type="checkbox"/> Always refer to the Installation and Specification Guide, supplied in the winch kit, for all wiring schematics and specific details on how to wire this WARN product to your vehicle.
Read installation and operating instructions thoroughly.

BEFORE YOU BEGIN

Please read and understand these instructions completely before installation to avoid injury to yourself or damage to the vehicle or accessory.

Dealer: These instructions contain important information for future reference and must be given to the customer at time of purchase or upon completion of installation.

TABLE OF CONTENTS

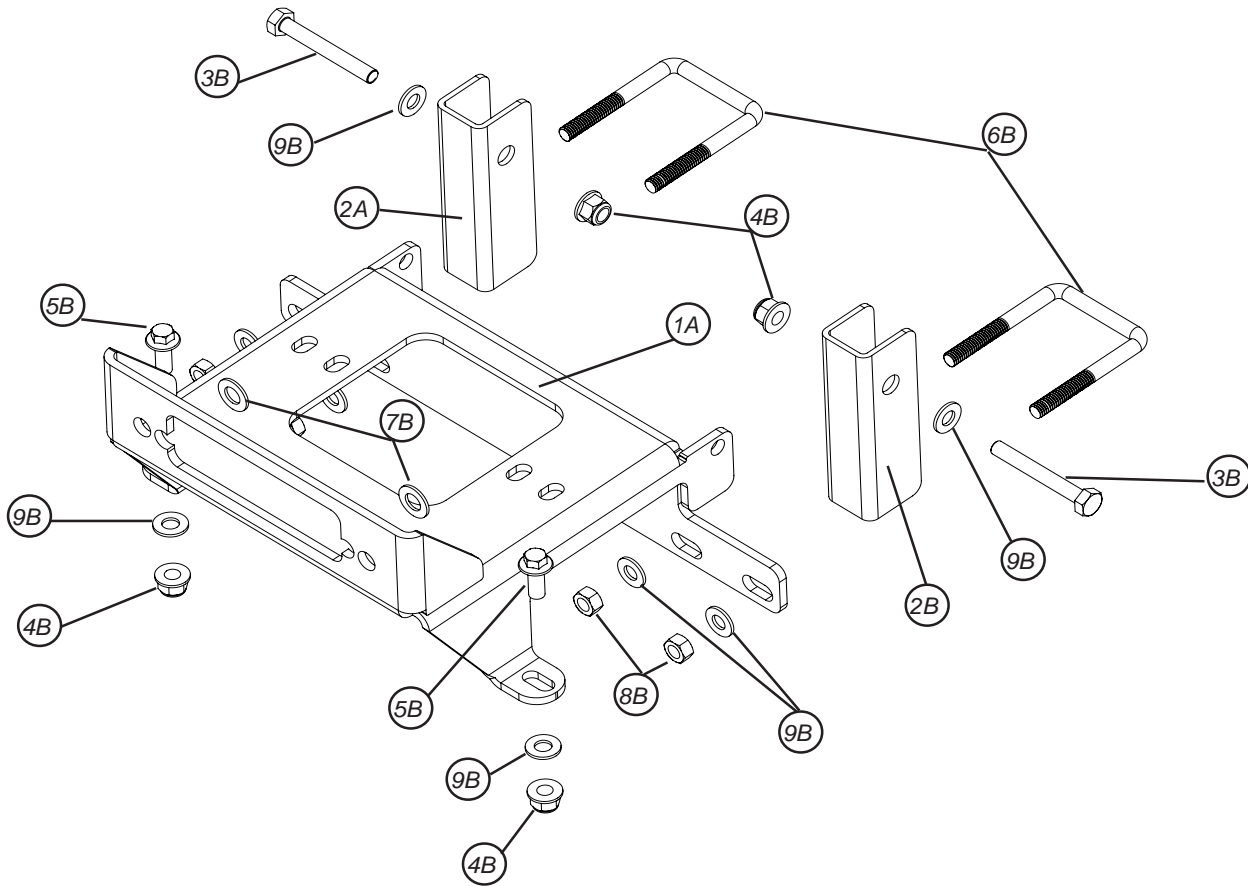
I.	Parts List	3
II.	Installation	4-7
III.	Maintenance/Care	7

TORQUE SPECIFICATIONS

M6, 1/4	8 lb. ft. (10.8 N-m)
M8, 5/16	17 lb. ft. (12.5 N-m)
M10, 3/8	30 lb. ft. (40.7 N-m)
M11, 7/16	50 lb. ft. (67.8 N-m)
M12, 1/2	75 lb. ft. (101.7 N-m)

I. PARTS LIST

NO.	PART NAME	DESCRIPTION	QTY
1A	MOUNTING PLATE	WINCH MOUNTING PLATE	1
2A	BRACKET FRAME SUPPORT	FRAME SUPPORT BRACKET	2
3B	CAP SCREW M8	M8-1.25 X 60MM HEX CAP SCREW	2
4B	FLANGED HEX NUT	M8-1.25 HEX NUT FLANG W/INSERT	4
5B	CAP SCREW M8	M8-1.25 X 20 MM FLANGED HEX CAP SCREW	2
6B	U-BOLT	5/16-18 X 2 X3 X 1.5 U-BOLT	2
7B	FLAT WASHER	3/8 FLAT WASHER	2
8B	HEX NUT W/INSERT	5/16-18 HEX NUT W/INSERT	4
9B	FLAT WASHER	5/16 FLAT WASHER	8



II. BRP COMMANDER MOUNTING KIT INSTALLATION

1. Prepare the UTV by disconnecting the negative and positive leads to the battery; disconnect the negative battery lead first.
2. Place support brackets (2A) inside the frame of the UTV. Align the holes in the support brackets with the holes in the UTV frame as shown in figures 1 and 2.



Figure 1

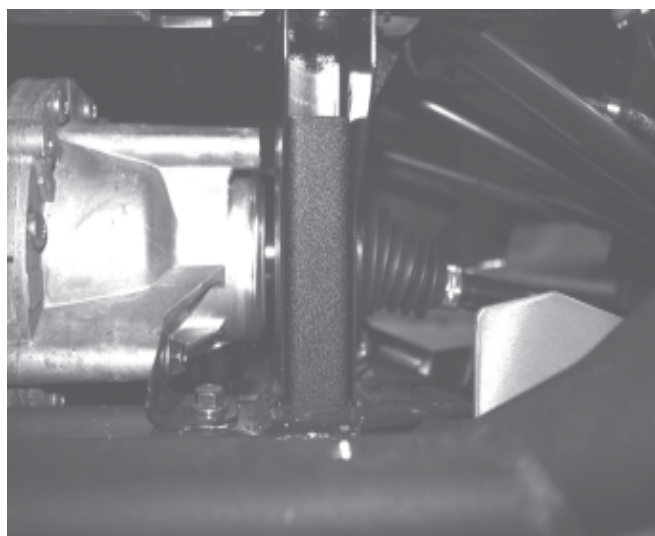


Figure 2

3. Place winch mounting plate (1A) into position as shown in figures 3 and 4.

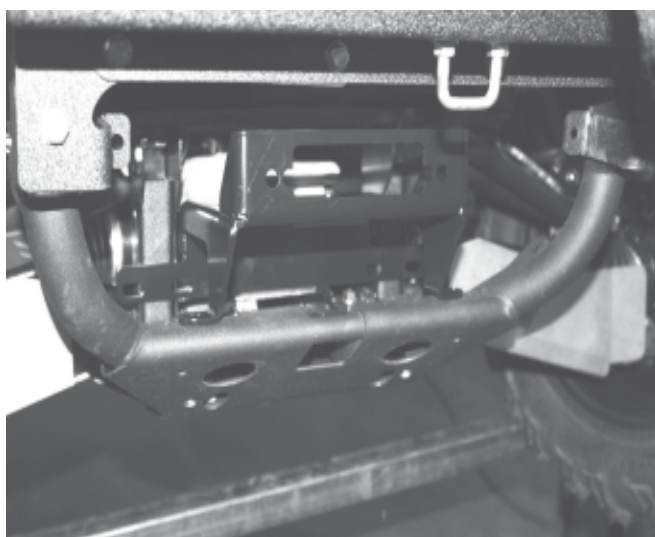


Figure 3

II. KIT INSTALLATION, CONTINUED

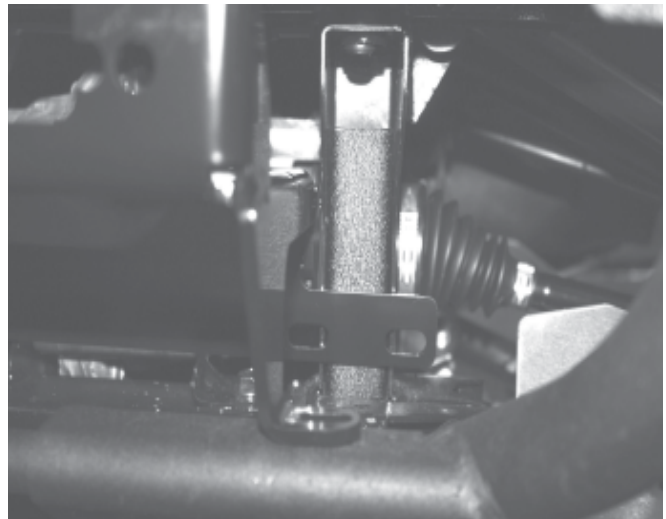


Figure 4

4. Attach the rear of the mounting plate with 2 M8-1.25 x 60mm hex head cap screw (3B), 2, 5/16 flat washers (9B), and 2, M8-1.25 flanged locking hex nuts (4B). Run the cap screws through the flange on the mounting plate into the frame and through the frame support bracket as shown in figure 5. Do not tighten at this time.
5. Place 5/16-18 x 2 x 3 x 1.5 u-bolt (6B) around the frame and into the mounting plate. Use 5/16 flat washers (9B) and 5/16-18 locking hex nuts (8B) to secure the u-bolts as shown in figure 5. Do not tighten the fasteners at this time.

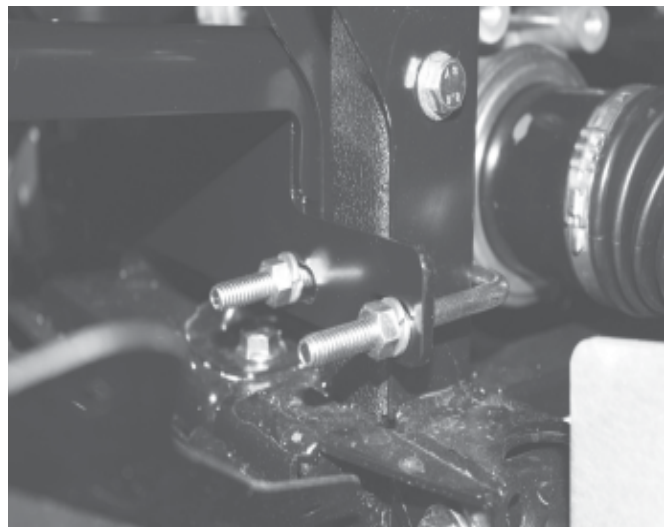


Figure 5

6. Place the 2, M8-1.25 x 20mm flanged hex capscrews (5B), through the front feet of the mounting plate and down through the bumper. Place a 5/16 flat washer (9B) and use the M8-1.25 flanged hex nut (4B) to secure on the bottom side. Make sure to keep all fasteners loose until all the fasteners have been installed.
7. After all fasteners have been installed then torque all fasteners to the specifications on page 2.



Figure 6

II. KIT INSTALLATION, CONTINUED

- Attach the roller fairlead to the mounting plate using the hardware that came with the winch, as shown in figure 7. If using the smaller ATV winch, 2500lb or 3000lb winch, then the large 3/8 flat washer (7B) will need to be placed behind the front flange in the mounting plate. This will give the fairlead hex nut a flat surface to tighten down on.

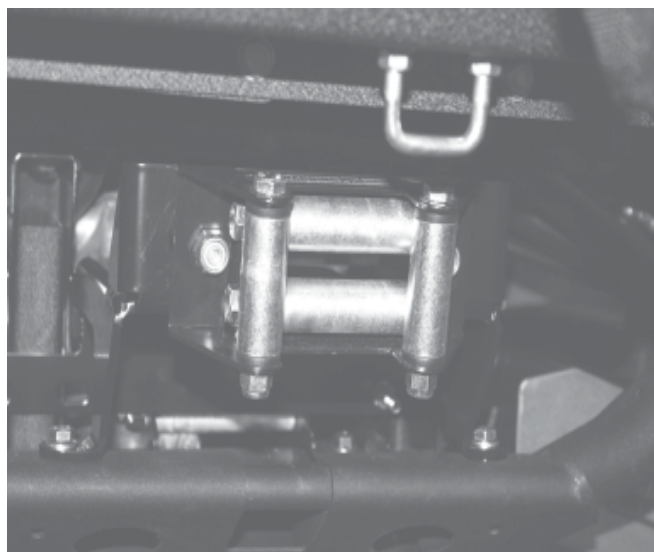


Figure 7

- Place the winch into position on the mounting plate and attach with the hardware that came with the winch, as shown in figure 8. Use 4 M8 x 20mm hex capscrews and 4 lock washers. After securing the winch run the cable through the fairlead window and attach the hook to the end of the cable.

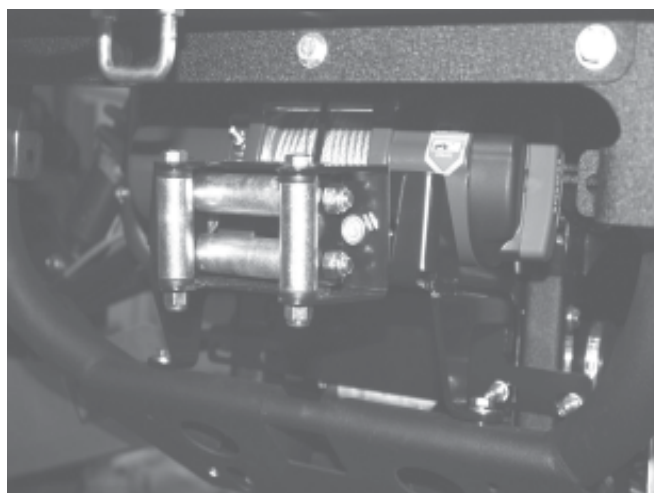


Figure 8

- The winch and mounting plate are now installed refer to the winch manual for the wiring diagram and proper wiring installation.



WARNING

Tighten all nuts and bolts securely. Failure to check all nuts and bolts prior to use can result in product failure which can lead to vehicle damage and operator injury or death.

- If installing the winch mounting plate with the Warn front plow mounting plate, place the front plow mounting plate into the frame as shown in figure 9. Tilt the front plow mounting plate forward and slip the winch mounting plate rear flange behind the plow mounting plate. Both mounting plates will then slip into place.

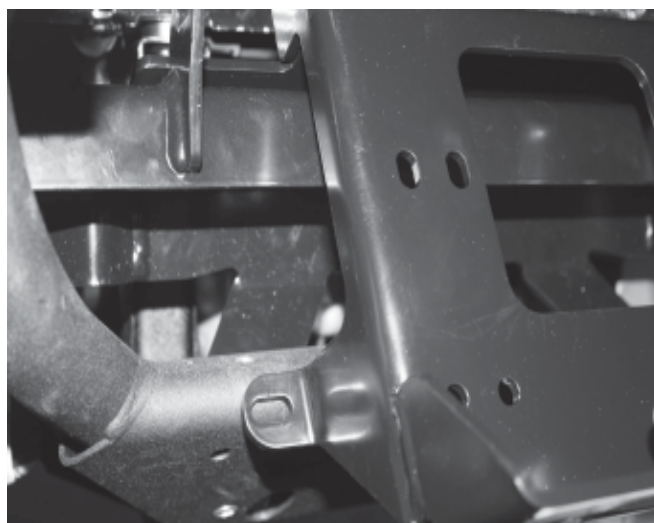


Figure 9

II. KIT INSTALLATION, CONTINUED

11. If using a winch with a remote control placing the remote socket connector in the front glove box is a good location as shown in figure 10.
12. Place the contactor on the front right frame behind the front spring and shock as shown in figures 11 and 12. There are holes in the frame corresponding to the feet on the contactor. This location will work for contactor in the 4000lb winch as well as the contactor that comes with the 2500lb and 3000lb winch.
13. Use the winch manual to help with proper wiring lay out and route wires from the contactor to the winch and vehicle battery. Make sure that the cables going to the winch motor and the battery are not running along any moving components or any part that may get to hot. Also make sure that the wiring is not routed over any sharp edges that may cut the wiring insulation. Use the cable ties the were supplied with the winch to secure any loose wiring.
14. Connect the vehicle and winch positive and negative battery cables to the battery; connect the positive lead first. Test winch operation make sure winch is functioning properly. Refer to Guide to Winching for proper operating procedures.
15. Installation is now complete. Read operators manual and the guide to winching before using the winch.

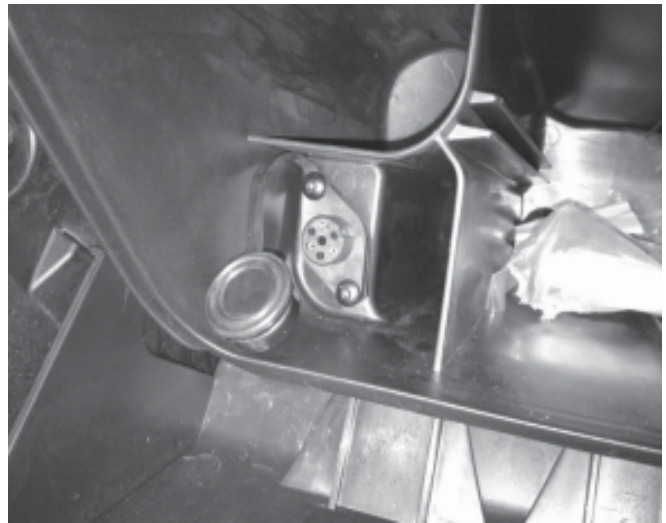


Figure 10

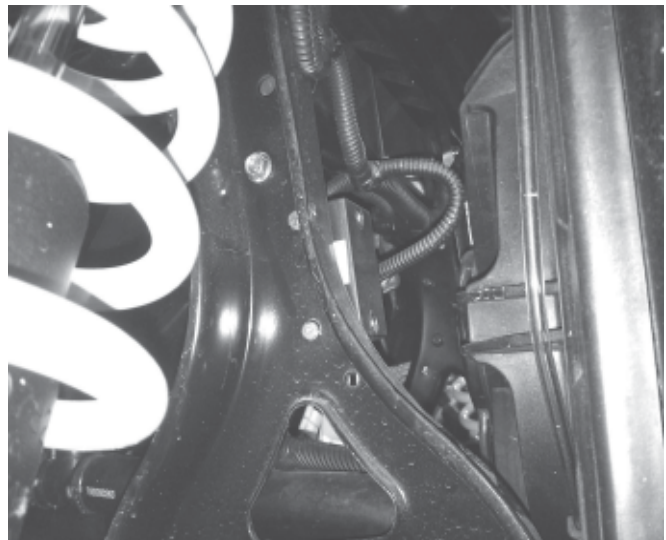


Figure 11

III. MAINTENANCE/CARE

- Inspect all metal parts on the winch, winch mount, and related hardware. Replace all that appears rusted or deformed prior to use.
- Inspect all nuts and bolts on the winch, winch mount, and related hardware prior to each use. Tighten all nuts and bolts that appear to be loose. Stripped, fractured, or bent bolts or nuts need to be replaced



WARNING

Failure to perform regular inspections and maintenance on the winch, winch mount, and related hardware may result in vehicle damage and operator injury or death.

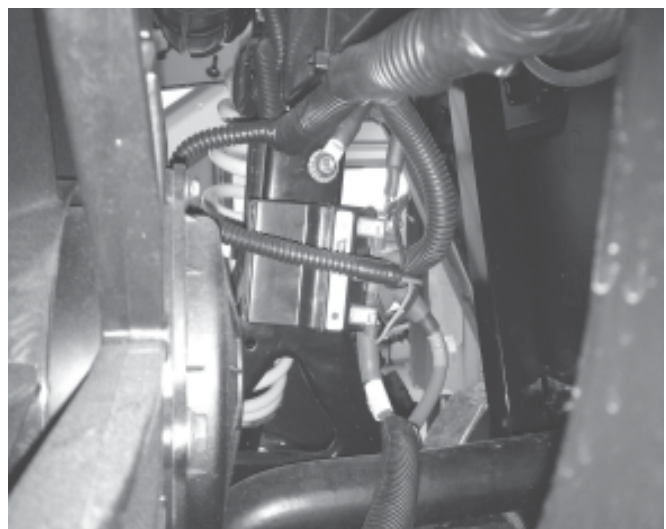


Figure 12