



# INSTALLATION INSTRUCTIONS BUMPER

Part Number: 91000

Applications: 2013+ Polaris Ranger 900 XP

Your safety, and the safety of others, is very important. To help you make informed decisions about safety, we have provided installation and operating instructions and other information on labels and in this guide. This information alerts you to potential hazards that could hurt you or others. It is not possible to warn you about all potential hazards associated with this product, you must use your own good judgment.

**CARELESS INSTALLATION AND OPERATION CAN RESULT IN SERIOUS INJURY OR EQUIPMENT DAMAGE. READ AND UNDERSTAND ALL SAFETY PRECAUTIONS AND OPERATING INSTRUCTIONS BEFORE INSTALLING AND OPERATING THIS PRODUCT.**

This guide identifies potential hazards and has important safety messages that help you and others avoid personal injury or death. **WARNING** and **CAUTION** are signal words that identify the level of hazard.

These signal words mean:

**WARNING** signals a hazard that *could* cause serious injury or death, if you do not follow recommendations. **CAUTION** signals a hazard that *may* cause minor to moderate injury, if you do not follow recommendations.

This guide uses **NOTICE** to call attention to important mechanical information, and **Note**: to emphasize general information worthy of special attention.

## **WARNING**

### **INJURY HAZARD**

**Failure to observe these instructions could lead to severe injury or death.**

- Always** use extreme caution when cutting and trimming during fitting.
- Always** remove jewelry and wear eye protection.
- Always** use appropriate and adequate care in lifting components into place.
- Always** insure components will remain secure during installation and operation.
- Always** tighten all nuts and bolts securely, per the installation and operation.
- Always** perform regular inspections and maintenance on the bumper and related hardware.
- Never** operate this **WARN** product with damaged or missing parts.

<b>⚠ Caution</b>
<b>Moving Parts Entanglement Hazard</b>
Failure to observe these instructions could lead to minor or moderate injury.
<input type="checkbox"/> <b>Always</b> take time to fully read and understand the installation and Operations Guide included with this product. <input type="checkbox"/> <b>Never</b> operate this product if you are under 16 years of age. <input type="checkbox"/> <b>Never</b> operate this product when under the influence of drugs, alcohol or medications.
<b>Read installation and operating instructions thoroughly.</b>

<b>Notice</b>
<b>Equipment Damage</b>
<input type="checkbox"/> <b>Always</b> refer to the Installation and Specification Guide, supplied in the winch kit, for all wiring schematics and specific details on how to wire this WARN product to your vehicle.
<b>Read installation and operating instructions thoroughly.</b>

## TABLE OF CONTENTS

Tools Required	page 2
Fastener Torque Specifications	page 2
Parts List	page 3
Installation	page 4-5
Maintenance/Care	page 6

## TOOLS REQUIRED

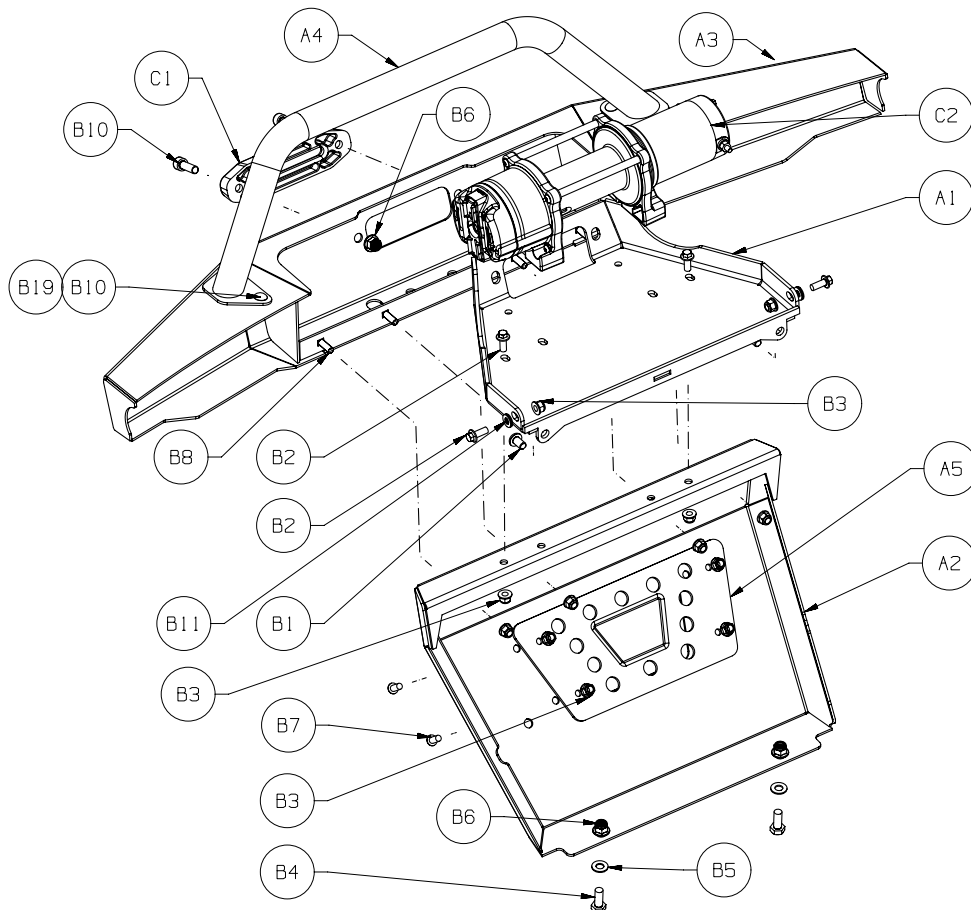
13mm, 15mm, 17mm socket  
 13mm, 15mm, 17mm end wrench  
 6mm hex key  
 Thread lock

## FASTENER TORQUE SPECIFICATIONS

1/4 & M6	8 lb. ft. (10.8 N-m)
5/16 & M8	17 lb. ft. (12.5 N-m)
3/8 & M10	30 lb. ft. (40.7 N-m)
7/16	50 lb. ft. (67.8 N-m)
1/2	75 lb. ft. (101.7 N-m)

## PARTS LIST

Reference	Part Number	QTY	Description
A1	90988	1	Bumper Winch Mount
A2	90999	1	Bumper Support
A3	90998	1	Bumper
A4	83620	1	Bumper tube
A5	83622	1	Grill
B1	83605	2	M10 x 16 button head bolt
B2	78648	4	M8 x 20mm flange bolt
B3	71588	12	M8 flange nut
B4	22527	2	M10 x25mm bolt
B5	11524	2	M10 washer
B6	87232	4	M10 flange nut
B7	75776	4	M8 button head bolt
B8	79883	4	M8 x 25mm carriage
B9	79213	4	3/8" X 1" carriage bolt
B11	80182	4	3/8" nut
B10	85802	2	M10 x 30 Socket head bolt
B11	1324	4	shim washers
C1	Not included	1	Fairlead
C2	Not included	1	Winch



## INSTALLATION

1. Remove factory bumper if applicable. See Figure 1.
2. Remove factory winch if applicable.



Figure 1

3. Install bumper winch mount (A1) using fasteners (B1, B2, B3) as shown in Figure 2. Apply thread lock to fasteners (B1). Do not tighten fasteners at this time. Use fasteners (B11) as shims if required for fasteners (B2, B3).



Figure 2

4. Install bumper support (A2) using fasteners (B2, B3) in the top locations. Install fastener removed in step 1 or supplied fasteners (B4, B5, B6) in the lower locations as shown in Figure 3. Do not tighten fasteners at this time.



Figure 3

5. Install bumper tube (A4) to bumper (A3) using fasteners (B9, B10) as shown in Figure 4. Tighten fasteners to torque recommendation.

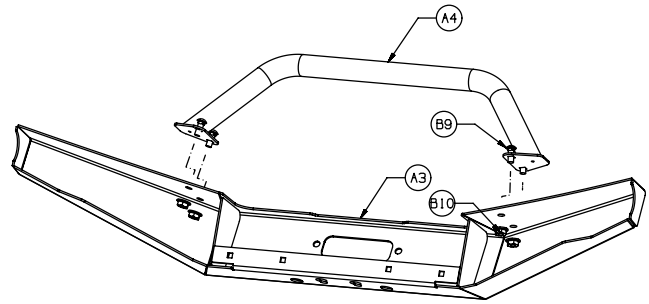


Figure 4

6. Install bumper to bumper support using fasteners (B8, B3) as shown in Figure 5. Do not tighten fasteners at this time.



Figure 5

7. Install fairlead (C1). Fairlead and fairlead fasteners are included in the winch kit. Fasteners (B10, B6) supplied with this kit for use with hawse style fairlead if applicable.

8. With the fairlead in place, tighten all fasteners to torque specification listed.

9. Install winch (C2) to bumper winch mount (A1) using M8 fasteners located in winch kit as shown in Figure 6. Follow winch installation instruction found in winch kit.

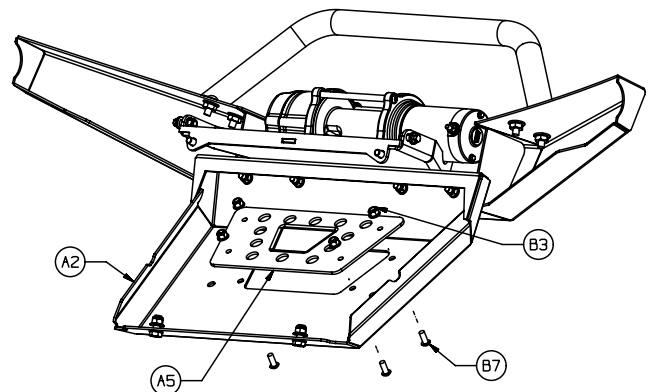


Figure 6

10. Install grill (A5) to bumper support (A2) using fasteners (B7, B3) as shown in Figure 6.

**PROCEED TO SECTION TITLED  
“MAINTENANCE/CARE”.**

**⚠ WARNING**

**FAILURE TO SECURELY TIGHTEN ALL BOLTS ON THE BUMPER CAN RESULT IN PRODUCT FAILURE WHICH MAY RESULT IN VEHICLE DAMAGE AND OPERATOR INJURY OR DEATH. DOUBLE CHECK THAT ALL BOLTS ARE SECURELY TIGHTENED PRIOR TO USE.**

**MAINTENANCE/CARE**

1. Inspect all parts on the bumper and related hardware prior to each use. Replace all hardware that appears rusted or deformed.
2. Inspect all nuts and bolts on the bumper, and related hardware prior to each use. Tighten all nuts that appear to be loose. Stripped, fractured, or bent bolts or nuts need to be replaced.
3. Check all moving or rotating parts. Remove debris that may inhibit the part from moving freely.

**⚠ WARNING**

**PERFORM REGULAR INSPECTIONS ON THE BUMPER AND RELATED HARDWARE. FAILURE TO FOLLOW THIS WARNING MAY CAUSE VEHICLE DAMAGE AND OPERATOR INJURY OR DEATH.**