



INSTRUCTIONS—INSTRUCCIONES—CONSIGNES

AUTOMOTIVE PRODUCTS, INC.

APPLICATION: 09-11 FORD F150 SUPERCREW 6 1/2" BED
APP PART # 24-54290, 24-54295
PLATINUM WHEEL TO WHEEL STEP BARS

ITEM	QUANTITY	DESCRIPTION	TOOLS NEEDED
1	2	STEP BARS	3/4" SOCKET
2,3	2	FRONT MOUNTING BRACKETS (2) DRIVERS SIDE, (3) PASSENGER SIDE	18MM SOCKET
4,5	2	CENTER MOUNTING BRACKETS (4) DRIVERS SIDE, (5) PASSENGER SIDE	16MM SOCKET
6,7	2	REAR MOUNTING BRACKETS (6) DRIVERS SIDE, (7) PASSENGER SIDE	13MM SOCKET
8	2	1/2" HEX HEAD BOLTS	3/8 DRILL BIT
9	2	1/2" FLAT WASHERS	ALLEN TOOL (INCLUDED)
10	2	1/2" LOCK WASHERS	RATCHET
11	2	M12 BOLT/ M10 NUT PLATES	TORQUE WRENCH
12	4	M10 NUT CLIPS	
13	6	M10 HEX HEAD BOLTS	
14	6	M10 FLAT WASHERS	
15	6	M10 LOCK WASHERS	
16	10	M8 HEX HEAD BOLTS	
17	16	M8 FLAT WASHERS	
18	10	M8 LOCK WASHERS	
19	10	M8 HEX NUTS	
20	4	M8 SMALL FLAT WASHERS	
21	2	M12 STUD PLATE	
22	4	M12 HEX NUTS	
23	2	M12 FLAT WASHERS	
24	4	M12 LOCK WASHERS	
25	4	M11 PLASTIC RETAINERS	
26	8	M10 BUTTON HEAD BOLTS (BLACK ZINC)	
27	8	M10 FLAT WASHERS (BLACK ZINC)	
28	8	M10 FLAT LOCK WASHERS (BLACK ZINC)	

1. Remove contents from box, verify all parts listed are present and free from damage. Carefully read and understand all instructions before attempting installation.
2. Starting at the drivers side of the vehicle locate the mounting holes towards the front of the vehicle (fig 1), insert (1) M12 bolt/ M10 nut plate into the mounting holes, then remove the factory hardware in the pinch weld (fig 1), locate the drivers side front mounting bracket and attach it to the previously installed bolt/nut plate using, (1) M12 flat washer, (1) M12 lock washer, (1) M12 hex nut, (1) M10 hex head bolt, (1) M10 lock washer, and (1) M10 flat washer. (fig 2) Move to the pinch weld were the factory hardware was removed and attach the front drivers side bracket to the pinch weld using (2) M8 hex head bolts, (2) M18



Westing Automotive Products, Inc.
5200 N. Irwindale Ave. Suite 220
Irwindale, Ca. 91706

Thank You for choosing Westin products
For Additional installation assistance please call
Customer service (800) 793-7846
www.westinautomotive.com

- flat washers, (2) M8 small flat washers (these are used on the inside of the pinch weld on top of the bracket), (2) M8 lock washers, and (2) M8 hex nuts. Do not fully tighten at this time. (fig 3, 4)
3. Move to the middle of the cab and remove the tape covering the center mounting holes insert (2) M10 nut clips in the two holes in the rocker panel (fig 5), next locate the drivers side center mounting bracket, and attach it to the previously installed nut clips using (2) M10 hex head bolts, (2) M10 lock washers, and (2) M10 flat washers. Attach the center mounting bracket to the pinch weld using (2) M8 hex head bolts, (4) M8 flat washers, (2) M8 lock washers, and (2) M8 hex nuts. Do not fully tighten at this time. (fig 6)
 4. Move to the rear of the cab and remove the tape covering the rear mounting bracket location. (fig 7) and insert a M12 bolt plate into the round hole and hold it in place by threading a M11 plastic retainer onto the bolt this is to prevent it from falling into the body. Take the drivers side rear mounting bracket and attach it to the previously installed bolt plate using (1) M12 flat washer, (1) M12 lock washer, and (1) M12 hex nut. .Locate the bottom mounting location on the pinch weld use a 3/8" drill bit to drill a hole through the pinch weld, once that is completer attach using (1) M8 hex head bolt, (2) M8 flat washers, (1) M8 lock washer, and (1) M8 hex nut do not fully tighten at this time. (fig 8).
 5. Take the drivers side step bar and mount it to the front mounting bracket using (1) 1/2" hex head bolt, (1) 1/2" lock washer, and (1) 1/2" flat washer.
 6. Move to the center mount and attach the step bar to the cradle using (2) M10 button head bolts (black zinc), (2) M10 toothed lock washer (black zinc), and (2) M10 flat washers (black zinc). Follow the same step to mount the step bar to the rear mounting bracket.
 7. Align and adjust the step bar as needed and fully tighten all hardware at this time. Torque all 1/2" fasteners to 55 ft lbs, M12 to 50-55 ft lbs, M10 to 40-45 ft lbs, and M8 to 30-35 ft lbs.

CARE INSTRUCTIONS

- REGULAR WAXING IS RECOMMENDED. DO NOT USE ANY TYPE OF POLISH OR WAX THAT MAY CONTAIN ABRASIVES
- STAINLESS STEEL PRODUCTS CAN BE CLEANED WITH MILD SOAP AND WATER. STAINLESS STEEL POLISH SHOULD BE USED TO POLISH SMALL SCRATCHES.
- GLOSS BLACK FINISHES SHOULD BE CLEANED WITH MILD SOAP AND WATER

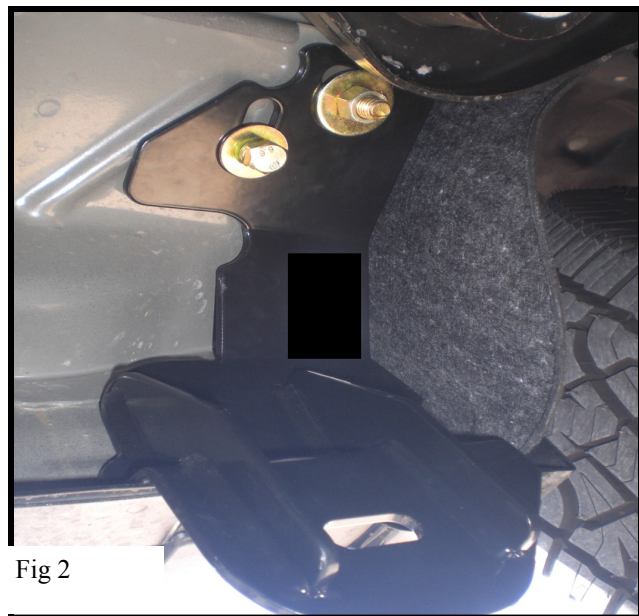
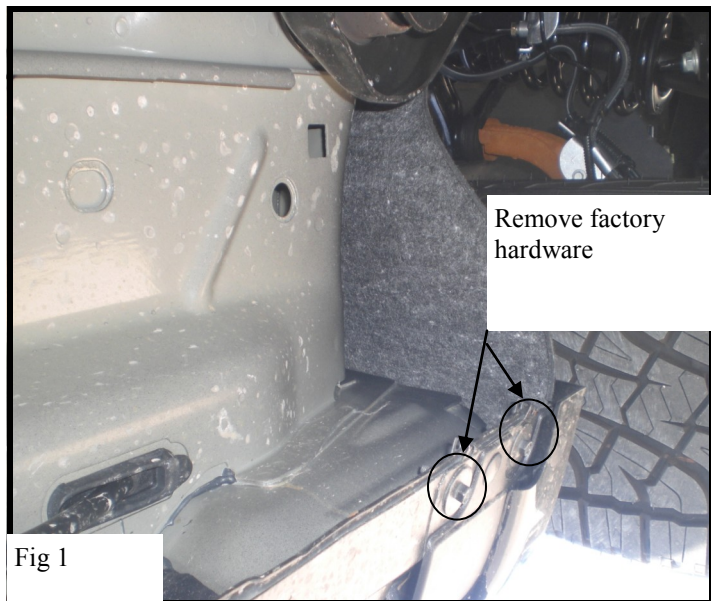
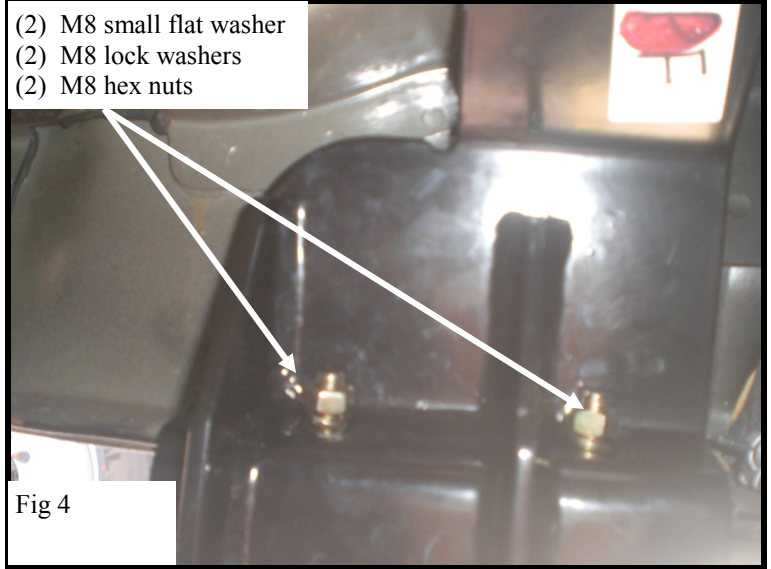




Fig 3

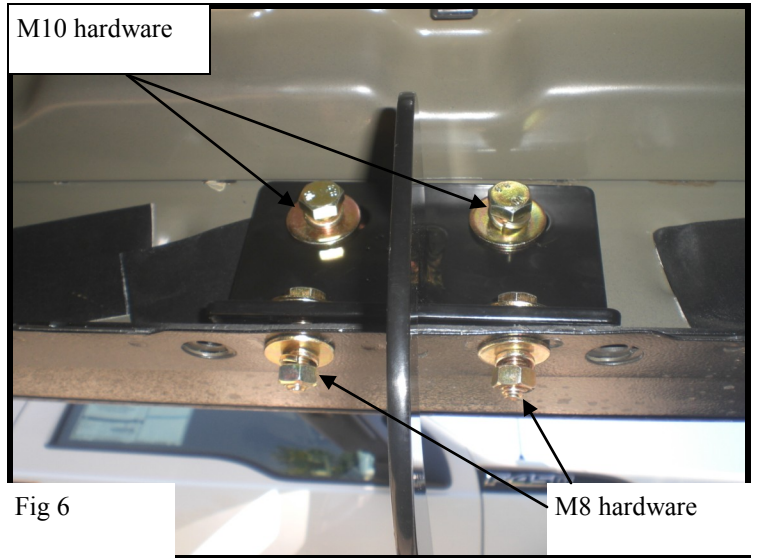


- (2) M8 small flat washer
- (2) M8 lock washers
- (2) M8 hex nuts

Fig 4



Fig 5



M10 hardware

Fig 6

M8 hardware



Fig 7

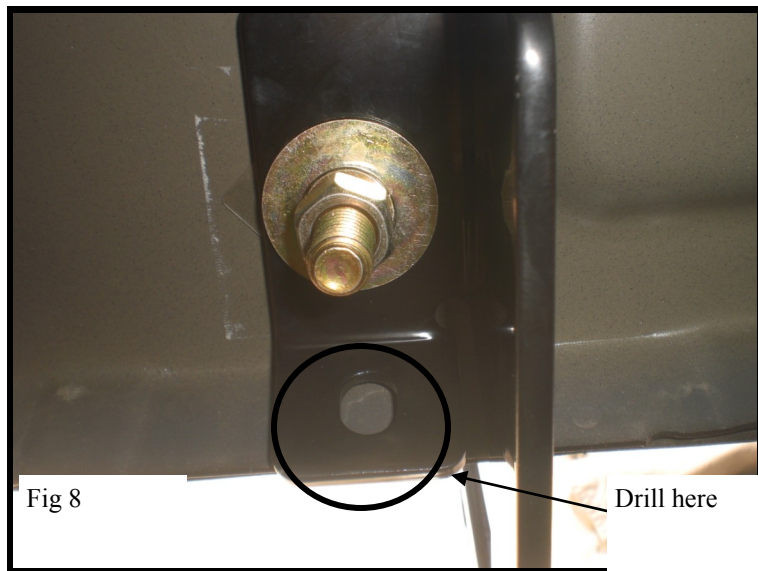


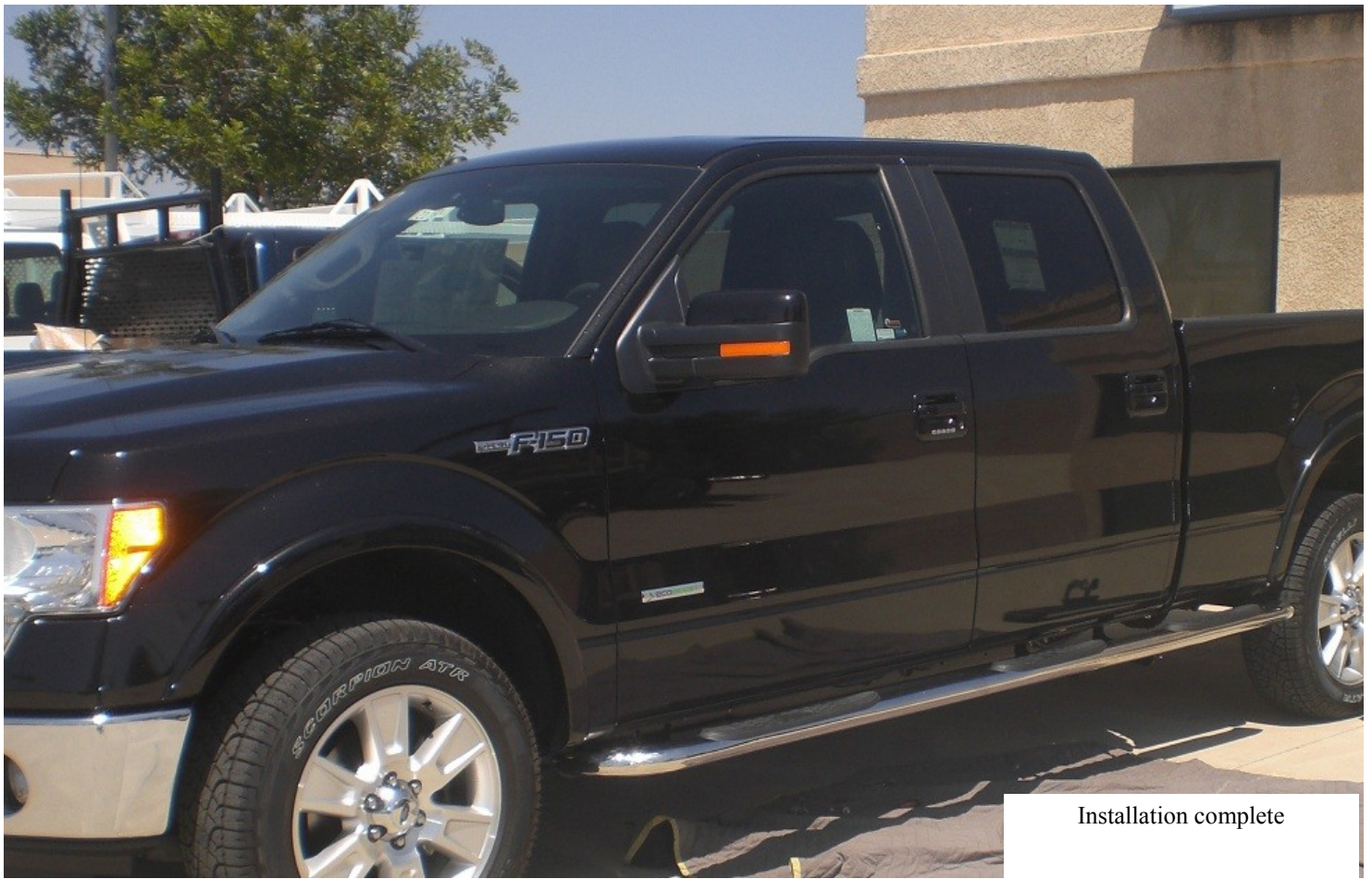
Fig 8

Drill here



Westing Automotive Products, Inc.
5200 N. Irwindale Ave. Suite 220
Irwindale, Ca. 91706

Thank You for choosing Westin products
For Additional installation assistance please call
Customer service (800) 793-7846
www.westinautomotive.com



Installation complete



Westing Automotive Products, Inc.
5200 N. Irwindale Ave. Suite 220
Irwindale, Ca. 91706

6/3/2011 P.N.: 75-0006-RevA ECO 24-54290

PG-4

Thank You for choosing Westin products
For Additional installation assistance please call
Customer service (800) 793-7846
www.westinautomotive.com