



AUTOMOTIVE PRODUCTS,

INSTALLATION INSTRUCTIONS

HDX GRILLE GUARD

APPLICATION:

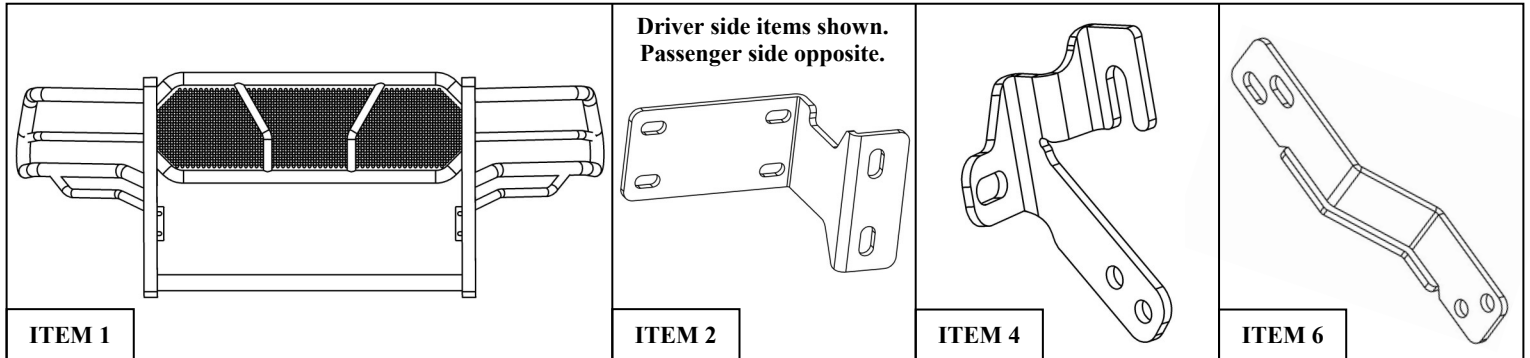
2010-UP Dodge Ram 2500/3500

PART NUMBER:

57-3550, 57-3555

ITEM	QUANTITY	DESCRIPTION	TOOLS NEEDED
1	1	HDX GRILLE GUARD	18MM SOCKET
2,3	2	FRAME MOUNTING BRACKETS, DRIVER(2) AND PASSENGER(3)	18MM WRENCH
4,5	2	LOWER MOUNTING BRACKETS, DRIVER(4) AND PASSENGER(5)	16MM SOCKET
6,7	2	UPPER MOUNTING BRACKETS, DRIVER(6) AND PASSENGER(7)	16MM WRENCH
8	8	M10 HEX HEAD CAP SCREWS (BLACK ZINC)	RATCHET
9	16	M10 FLAT WASHERS (BLACK ZINC)	TORQUE WRENCH
10	8	M10 LOCK WASHERS (BLACK ZINC)	
11	8	M10 HEX NUTS (BLACK ZINC)	
12	12	M12 HEX HEAD BOLTS (STAINLESS)	
13	24	M12 FLAT WASHERS (STAINLESS)	
14	12	M12 LOCK WASHERS (STAINLESS)	
15	12	M12 HEX NUTS (STAINLESS)	

ANTI-SEIZE LUBRICANT MUST BE USED ON ALL STAINLESS STEEL FASTENERS TO PREVENT THREAD DAMAGE AND GALLING

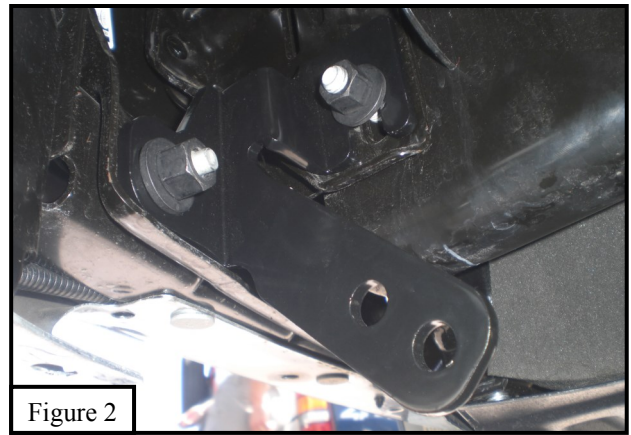
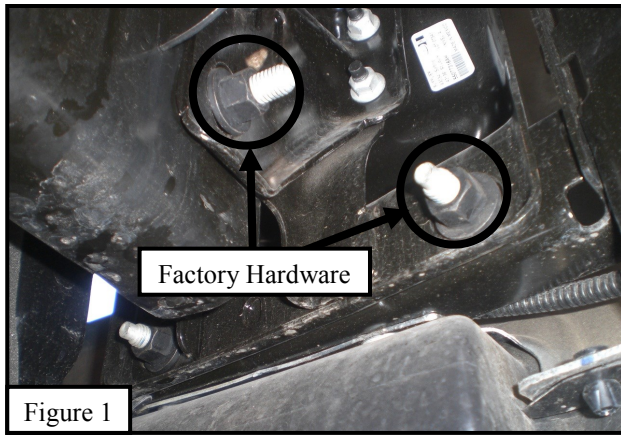


PROCEDURE

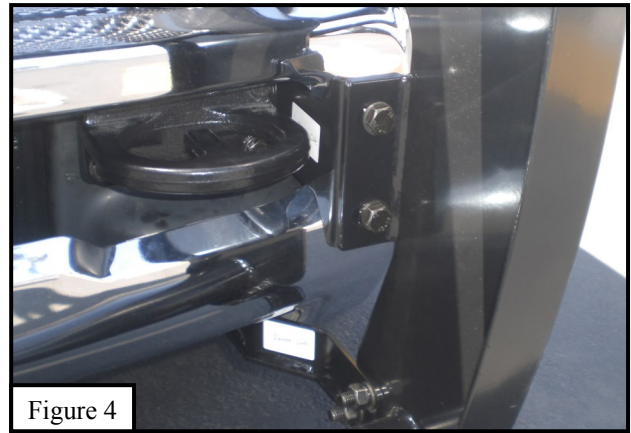
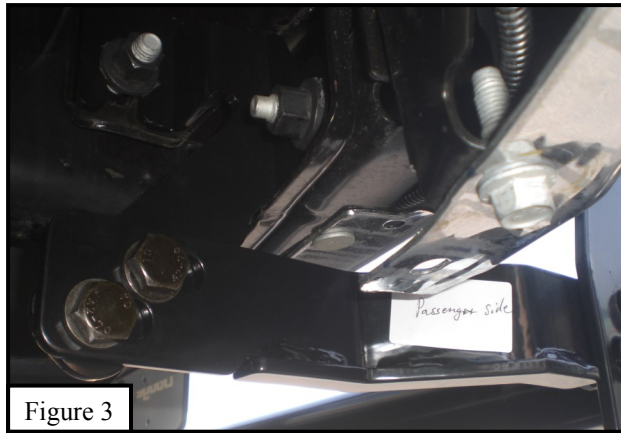
- Remove contents from box, verify if all parts listed are present and free from damage.
Carefully read and understand all instructions before attempting installation.
Failure to identify damage before installation could lead to a rejection of any claim.
- Starting at the front underneath the vehicle remove the lower plastic valance and set aside **Note:** The valance will have to be trimmed to allow clearance for the lower mounting brackets.
- Starting at the drivers side of the vehicle locate the two factory nuts shown in **Figure 1** remove the factory nuts. Locate the drivers side frame mounting bracket and attach it to the frame using the factory hardware (**Figure 2**). Repeat this step for the passenger side.



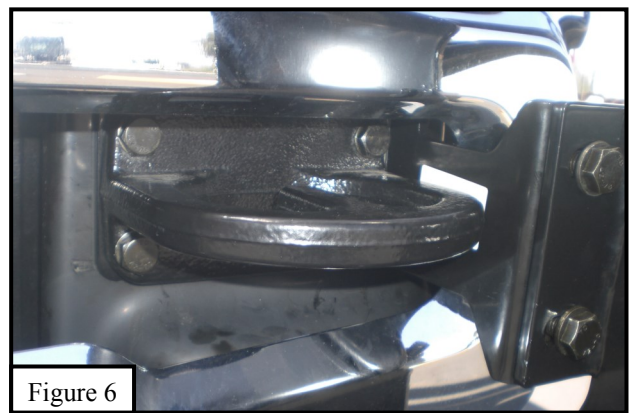
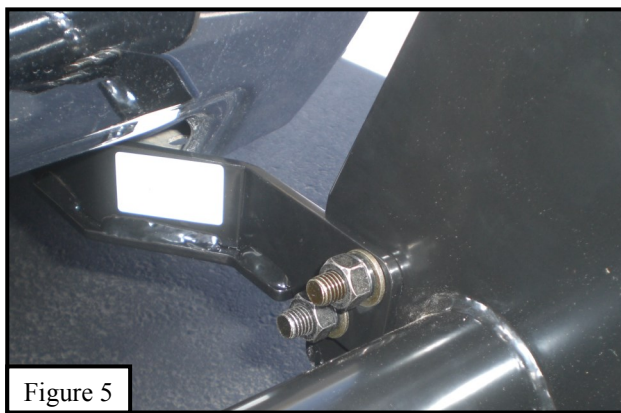
Westin Automotive Products, Inc.
320 W. Covina Blvd
San Dimas, Ca. 91773



4. Attach the lower mounting brackets to the frame mounting brackets using (4) M12 hex head bolts (stainless), (8) M12 flat washers (stainless), (4) M12 lock washers (stainless), and (4) M12 hex nuts (stainless) (**Figure 3**). *Do not fully tighten at this time.*
5. Move to the front of the vehicle and remove the factory tow hooks, take the drivers side upper mounting bracket and place it between the frame and tow hook replace the factory tow hook hardware using (4) M10 hex head cap screws (8) M10 flat washers, (4) M10 lock washers, and (4) M10 hex nuts (**Figure 4**). Repeat this step for the passenger side.



6. With assistance lift the grille guard and align it with the previously installed mounting brackets. Attach the grille guard to the brackets using (8) M12 hex head bolts (stainless), (16) M12 flat washers (stainless), (8) M12 lock washers (stainless), and (8) M12 hex nuts. (**Figure 5 and 6**)
7. Trim the plastic valance to fit the lower mounting brackets and re install the valance.
8. Align and adjust the grille guard as needed then tighten all hardware at this time. Torque all M12 stainless fasteners to 40-45 ft lbs, and M10 to 30-35 ft lbs.



Westin Automotive Products, Inc.
 320 W. Covina Blvd
 San Dimas, Ca. 91773

Thank you for choosing Westin products
 for additional installation assistance please call
 Customer Service (800) 793-7846
 www.westinautomotive.com

INSTALLATION COMPLETE



CARE INSTRUCTIONS

- REGULAR WAXING IS RECOMMENDED. DO NOT USE ANY TYPE OF POLISH OR WAX THAT MAY CONTAIN ABRASIVES.
- STAINLESS STEEL PRODUCTS CAN BE CLEANED WITH MILD SOAP AND WATER. STAINLESS STEEL POLISH SHOULD BE USED TO POLISH SMALL SCRATCHES.
- GLOSS BLACK FINISHES SHOULD BE CLEANED WITH MILD SOAP AND WATER.



Westin Automotive Products, Inc.
320 W. Covina Blvd
San Dimas, Ca. 91773

Thank you for choosing Westin products
for additional installation assistance please call
Customer Service (800) 793-7846
www.westinautomotive.com

Westin

SIGNATURE OF QUALITY

AUTOMOTIVE PRODUCTS, INC.



WARNING



Failure to follow these instructions could lead to death, personal injury, and / or property damage.

FASTENERS:

All Westin supplied fasteners must be utilized and installed in accordance with the installation instructions and apply torque to the specifications as defined. **DOUBLE CHECK ALL FASTENERS BEFORE INITIAL USE, AND PERIODICALLY IN THE FUTURE TO ENSURE PROPER FUNCTION AND SAFETY.**

DRILLING:

Most Westin products do not require drilling for installation. If drilling is defined as required, use caution when drilling a vehicle. **FAILURE TO REVIEW AN AREA TO BE DRILLED MAY RESULT IN PERSONAL INJURY AND/OR INJURY TO OTHERS AS WELL AS VEHICLE DAMAGE.**

EYE PROTECTION:

ALWAYS WEAR SAFETY GLASSES OR GOGGLES DURING THE INSTALLATION PROCESS TO AVOID PERSONAL INJURY.

MAXIMUM TOWING/CARRYING CAPACITY:

The Westin Receiver Hitches will have a visible tow rating label affixed directly on the product. User should never exceed the vehicle manufacturers maximum tow and weight rating regardless of the capacity of the hitch. **FAILURE TO FOLLOW THESE GUIDELINES WILL VOID THE WESTIN WARRANTY AND MAY RESULT IN PERSONAL INJURY AND/OR INJURY TO OTHERS AS WELL AS VEHICLE DAMAGE.**

Westin
SIGNATURE OF QUALITY

Westin Automotive Products, Inc.
320 W. Covina Blvd
San Dimas, Ca. 91773