



# INSTRUCTIONS—INSTRUCCIONES—CONSIGNES

APPLICATION: 03-07 CHEVY SILVERADO 1500 "CLASSIC"  
APP PART # 57-1170, 57-1175  
HDX GRILLE GUARD

AUTOMOTIVE PRODUCTS, INC.

ITEM	QUANTITY	DESCRIPTION	TOOLS NEEDED
1	1	GRILLE GUARD	18MM SOCKET
2,3	2	LOWER MOUNTING BRACKETS (2) DRIVERS SIDE, (3) PASSENGER SIDE	RATCHET
4,5	2	UPPER MOUNTING BRACKET (4) DRIVERS SIDE, (5) PASSENGER SIDE	TORQUE WRENCH
6	2	LARGE M12 HEX HEAD BOLTS	
7	8	M12 HEX HEAD BOLTS	
8	16	M12 FLAT WASHERS	
9	8	M12 LOCK WASHERS	
10	8	M12 HEX NUTS	
11	6	M12 HEX BOLTS (STAINLESS STEEL)	
12	12	M12 FLAT WASHERS (STAINLESS STEEL)	
13	6	M12 LOCK WASHERS (STAINLESS STEEL)	
14	6	M12 HEX NUTS (STAINLESS STEEL)	

1. Remove contents from box, verify if all parts listed are present and free from damage. Carefully read and understand all instructions before attempting installation. NOTE: anti seize lubricant must be used on all stainless steel fasteners.
2. Starting at the front of the vehicle, under the hood of the vehicle remove the front plastic cover by removing the plastic clips holding it in place, once removed set aside. (FIG 1)
3. From underneath the front drivers side of the vehicle remove the two factory bolts attaching the tow hook, do not remove the tow hooks ( if vehicle is not equipped with tow hooks then disregard this step).
4. Locate the drivers side lower mounting bracket and align it to the holes in the frame attach the lower mounting bracket to the bottom tow hook bolt location using the factory hardware. If the vehicle is not equipped with tow hooks attach the bracket to the lower mounting hole using (1) M12 hex head bolt, (2) M12 flat washers, (1) M12 lock washer, and (1) M12 hex nut. Do not fully tighten at this time. (FIG 2)
5. From underneath the hood locate the factory bumper bolt, remove the bolt and locate the drivers side upper mounting bracket, attach the upper mounting bracket to the factory bumper bolt location using (1) M12 hex head bolt (2) M12 flat washers, (1) M12 lock washer, and (1) M12 hex nut. (FIG 3)
6. Once lower and upper mounting bracket are in align the corresponding mounting holes in both brackets and attach using (1) large M12 hex head bolt, (2) M12 flat washers, (1) M12 lock washer, and (1) M12 hex nut. If vehicle does not come equipped with tow hooks attach using (2) M12 hex head bolts, (4) M12 flat washers, (2) M12 lock washers, and (2) M12 hex nuts. Do not fully tighten at this time. (FIG 4 AND 5)
7. Repeat steps 2-6 for the passenger side.
8. With assistance, take the grille guard and align it with the previously installed mounting brackets, attach the grille guard to the lower mounting brackets using (4) M12 hex head bolts (stainless), (8) M12 flat washers (stainless), (4) M12 lock washers



Westing Automotive Products, Inc.  
5200 N. Irwindale Ave. Suite 220  
Irwindale, Ca. 91706

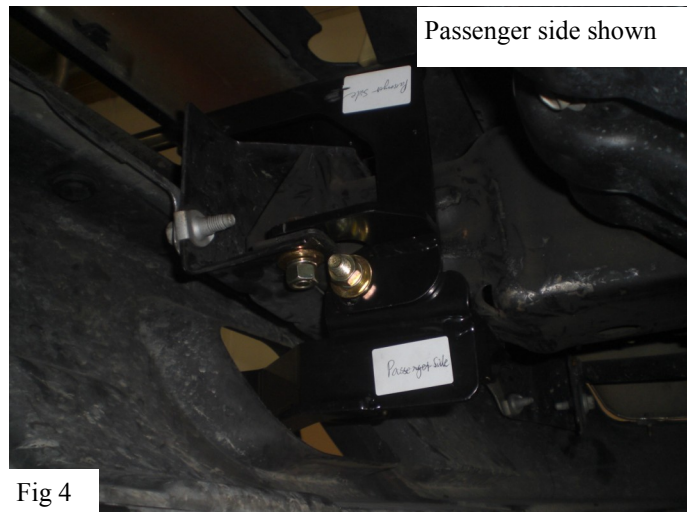
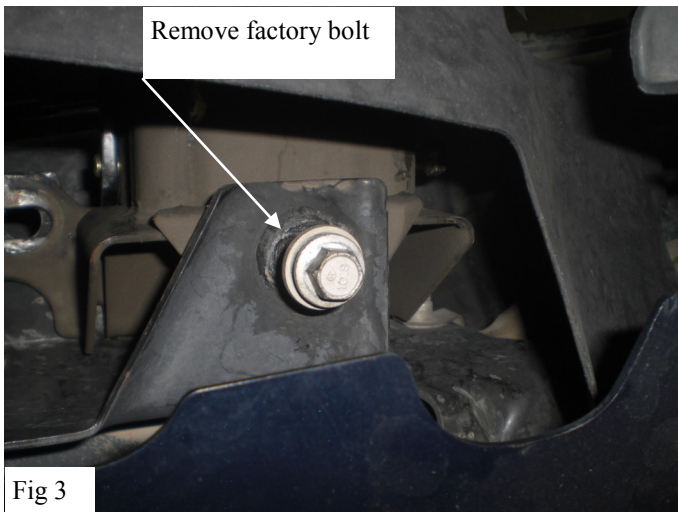
Thank You for choosing Westin products  
For Additional installation assistance please call  
Customer service (800) 793-7846  
[www.westinautomotive.com](http://www.westinautomotive.com)

(stainless), and (4) M12 hex nuts (stainless). Attach the grille guard to the upper mounting brackets using (2) M12 hex head bolts (stainless), (4) M12 flat washers (stainless), (2) M12 lock washer (stainless), and (2) M12 hex nuts (stainless). Do not fully tighten at this time. (FIG 6 AND 7)

9. Align and adjust the grille guard as needed then fully tighten all hardware at this time torque all M12 hardware to 50-55 ft lbs

#### CARE INSTRUCTIONS

- REGULAR WAXING IS RECOMMENDED. DO NOT USE ANY TYPE OF POLISH OR WAX THAT MAY CONTAIN ABRASIVES
- STAINLESS STEEL PRODUCTS CAN BE CLEANED WITH MILD SOAP AND WATER. STAINLESS STEEL POLISH SHOULD BE USED TO POLISH SMALL SCRATCHES.
- GLOSS BLACK FINISHES SHOULD BE CLEANED WITH MILD SOAP AND WATER



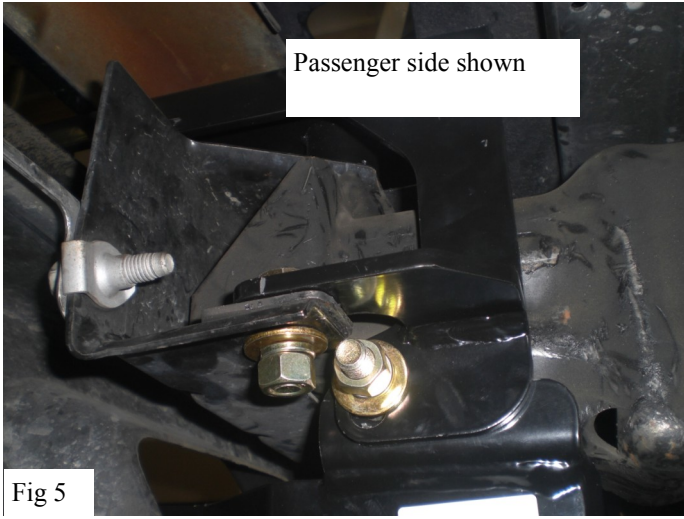


Fig 5



Fig 6



Fig 7



Westing Automotive Products, Inc.  
5200 N. Irwindale Ave. Suite 220  
Irwindale, Ca. 91706

10/7/2011 P.N.: 75-0022-RevB W11-0019

Thank You for choosing Westin products  
For Additional installation assistance please call  
Customer service (800) 793-7846  
[www.westinautomotive.com](http://www.westinautomotive.com)