



INSTRUCTIONS—INSTRUCCIONES—CONSIGNES

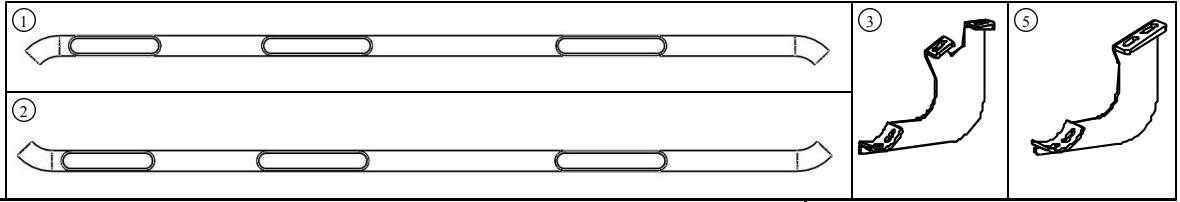
APPLICATION: 2007+ TOYOTA TUNDRA (D-CAB) 8 ft bed

SIGNATURE OF QUALITY

AUTOMOTIVE PRODUCTS, INC.

WHEEL TO WHEEL STEP BAR KIT

24-54340 24-54345



ITEM	QUANTITY	CONTENTS	TOOLS NEEDED	
1,2	2	STEP BARS (1)DRIVER & (2) PASSENGER SIDE	12MM SOCKET 13MM SOCKET 18MM SOCKET RATCHET TORQUE WRENCH	
3,4	2	FRONT MOUNTING BRACKETS (3) DRIVER & (4) PASSENGER SIDE		
5,6	4	REAR MOUNTING BRACKETS (5) DRIVER & (6)PASSENGER SIDE		
7,8	2	ISOLATOR BRACKET (TOP) (7) DRIVER & (8) PASSENGER SIDE		
9,10	2	ISOLATOR BRACKET (BOTTOM) (9) DRIVER, & (10) PASSENGER SIDE		
11	2	ISOLATOR ASSEMBLY (BUSHINGS AND HARDWARE)		
12	13	M8 HEX BOLTS		6MM HEX KEY TOOL
13	13	M8 SPRING TYPE LOCK WASHERS		
14	13	M8 FLAT WASHERS		
15	16	M10 HEX BUTTON HEAD SCREWS		
16	16	M10 FLAT WASHERS		
17	16	M10 INTERNAL TOOTHED LOCK WASHERS		
18	1	M10 X 30MM HEX HEAD BOLT (DRIVERS SIDE ISOLATOR BRACKET)		
19	1	M10 X 35MM HEX HEAD BOLT (PASSENGER SIDE ISOLATOR BRACKET)		
20	2	M10 SPRING TYPE LOCK WASHERS		
21	3	M10 LARGE FLAT WASHERS		
22	1	M10 HEX NUT		
23	1	M12 HEX HEAD BOLT		
24	1	M12 SPRING TYPE LOCK WASHER		
25	2	M12 FLAT WASHERS		
26	1	M12 HEX NUT		

- Remove contents from box and check for damage. Verify that all parts listed above are present. Carefully read all installation instructions before installing.
- Locate the driver and passenger side isolator brackets (top and bottom) and assemble with the isolator assembly using the bushings and included hardware.
- Locate the factory running board holes on vehicle. They will be on the underside of the rocker panel. There are 12MM bolts in place. (FIGURE 1)
- Starting at the driver side remove the front two bolts from the vehicle. Attach the front driver side mounting bracket using (2) M8 hex bolts, (2) M8 spring type lock washers, and (2) M8 flat washers. Do not fully tighten at this time. (FIGURE 1, 2)
- Remove the two 12MM bolts located behind the front bolts on the vehicle. Attach (1) driver side rear mounting bracket using (2) M8 hex bolts , (2) M8 spring type lock washers, and (2) M8 flat washers. Do not fully tighten at this time. (FIGURE 3, 4)
- Remove the rear most pair of factory bolts from the vehicle and install (1) Driver side rear mounting bracket with (2) M10 hex bolts, (2) M10 spring type lock washers, and (2) M10 flat washers. (FIGURE 4, 5)
- Locate the two threaded holes on the frame toward the rear of the frame on the drivers side and install the previously assembled drivers side isolator assembly with (1) M10 x 30MM hex head bolt, (1) M10 spring lock washer, (1) M10 large flat washer, (1) M8 hex head bolt, (1) M8 spring lock washer, and (1) M8 flat washer (FIG 6)
- Repeat steps 3-6 for the passenger side and install (1) Passenger side isolator bracket, (1) M12 Hex Bolt, (1) M12 spring type lock washer, (2) M12 flat washers, (1) M12 hex nut, (1) M10 hex bolt, (1) M10 spring type lock washer, (2) M8 flat washers, and (1) M10 hex nut. (FIG 7)
- Install driver side step bar to mounting brackets using (8) M10 hex button head screws,(8) M10 flat washers, AND (8) M10 internal tooth lock washer. (FIGURE 8,9)
- Tighten all fasteners at this time. M8 18-20 lb-ft. M10 to 35-40 ft lbs, and M12 to 45-50 ft lbs

FINISH PROTECTION

Westin products have a high quality finish that must be cared for like any other exposed finish on the vehicle. Protect the finish with a non-abrasive automotive wax, (e.g. Pure Carnauba) on a regular basis. The use of any soap, polish or wax that contains an abrasive is detrimental, as the compounds scratch the finish and open it to corrosion.



Westin Automotive Products, Inc.
5200 N. Irwindale Ave. Ste 220
Irwindale, Ca 91706

Thank You for choosing Westin products
For additional installation assistance please call
Customer Service (800)793-7846
www.westinautomotive.com

Westin

SIGNATURE OF QUALITY

AUTOMOTIVE PRODUCTS, INC.

INSTRUCTIONS—INSTRUCCIONES—CONSIGNES

APPLICATION: 2007+ TOYOTA TUNDRA (D-CAB & CREW MAX)



FIGURE 1

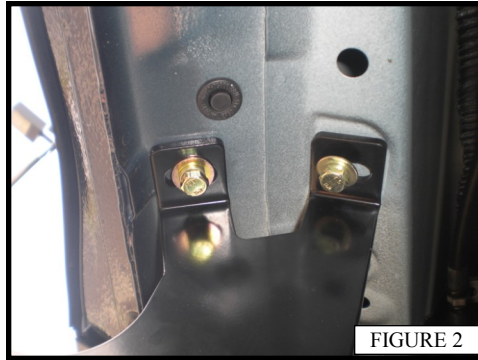


FIGURE 2



FIGURE 3

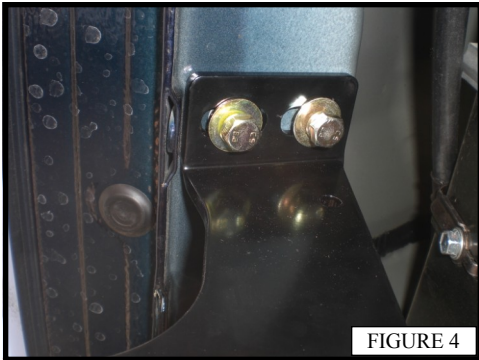


FIGURE 4



FIGURE 5

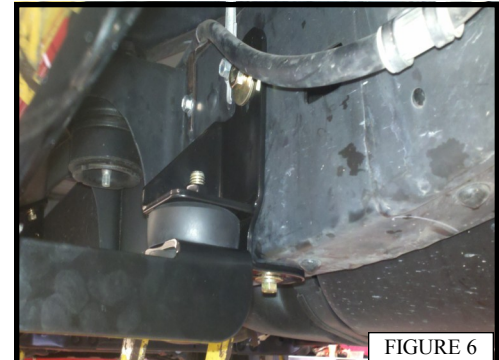


FIGURE 6

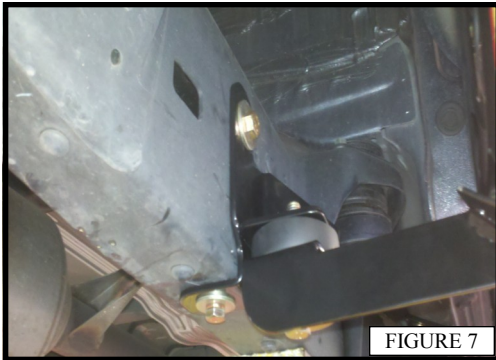


FIGURE 7



FIGURE 8



FIGURE 9



Westin

SIGNATURE OF QUALITY

Westin Automotive Products, Inc.
5200 N. Irwindale Ave. Ste 220
Irwindale, Ca 91706

Thank You for choosing Westin products
For additional installation assistance please call
Customer Service (800)793-7846
www.westinautomotive.com