



INSTRUCTIONS—INSTRUCCIONES—CONSIGNES

AUTOMOTIVE PRODUCTS, INC.

APPLICATION: 07-11 HYUNDAI SANTA FE
APP. PART # 23-3420, 23-3425
3" ROUND STEP BARS

ITEM	QUANTITY	DESCRIPTION	TOOLS NEEDED
1	2	STEP BARS	3/4" SOCKET
2,3	2	FRONT MOUNTING BRACKETS (2) DRIVERS SIDE, (3) PASSENGER SIDE	18MM SOCKET
4,5	2	REAR MOUNTING BRACKETS (4) DRIVERS SIDE, (5) PASSENGER SIDE	16MM SOCKET
6	4	M12 BOLT PLATES	RATCHET
7	2	M10 ROD BOLT PLATES	TORQUE WRENCH
8	2	M10 BOLT PLATES	
9	2	M12 PLASTIC RETAINERS	
10	2	1/2" HEX HEAD BOLTS	
11	2	1/2" LOCK WASHERS	
12	2	1/2" FLAT WASHERS	
13	4	M12 FLAT WASHERS	
14	4	M12 LOCK WASHERS	
15	4	M12 HEX NUTS	
16	4	M10 HEX HEAD BOLTS	
17	8	M10 LOCK WASHERS	
18	4	LARGE M10 FLAT WASHERS	
19	8	M10 FLAT WASHERS	
20	8	M10 HEX NUTS	

1. Remove contents from box, verify all parts listed are present and free from damage. Carefully read and understand all instructions before attempting installation.
2. Starting at the front, passenger side of the vehicle, locate and remove the (2) rubber plugs in the floor panel, (Figure 1).
3. Insert the long M10 Rod Bolt, (Figure 2A), into the oval hole and out the smaller round hole, (Figure 2B). Select (1) M10 Bolt Plate, (Figure 3A), and insert it into the remaining round hole, (Figure 3B). Locate the Passenger Side Front Frame Bracket. Hang the bracket from the (2) Bolt Plates with the supplied (2) M10 Large Flat Washers, (2) M10 Lock Washers and (2) M10 Hex Nuts, (Figure 4). Snug but do not tighten hardware at this time.
4. Moving toward the rear of the vehicle, locate and remove the round rubber plug on the inner body panel pictured in Figure 5. Thread (1) Plastic Retainer part way down (1) M12 Bolt Plate, (Figure 6A). Insert the Bolt Plate into the round hole in the body panel, (Figure 6B). IMPORTANT: The Plastic Retainer is designed to prevent the Bolt Plate from falling into the body panel during bracket installation, (Figure 6A & 6B).
5. Next, insert (1) M12 Bolt Plate into the oval hole in the bottom of the frame channel, (Figure 7). Position the passenger side Rear Frame Bracket up to the vehicle and partially attach the Bracket to the Bolt Plates inserted into the body panel. Secure using the included (2) M12 Flat Washers, (2) M12 Lock Washers and (2) M12 Hex Nuts, (Figure 8). Snug but do not tighten hardware at this time.
6. Position the front of the passenger Sidebar up to Mounting Bracket and attach it using the included (1) 1/2" x 2" Hex Bolt, (1)



Westing Automotive Products, Inc.
5200 N. Irwindale Ave. Suite 220
Irwindale, Ca. 91706

3/23/2011 P.N.: 75-0054-RevA

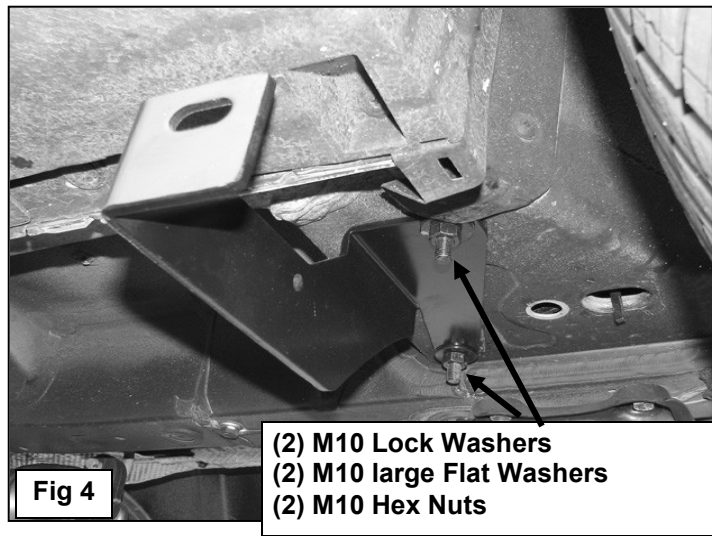
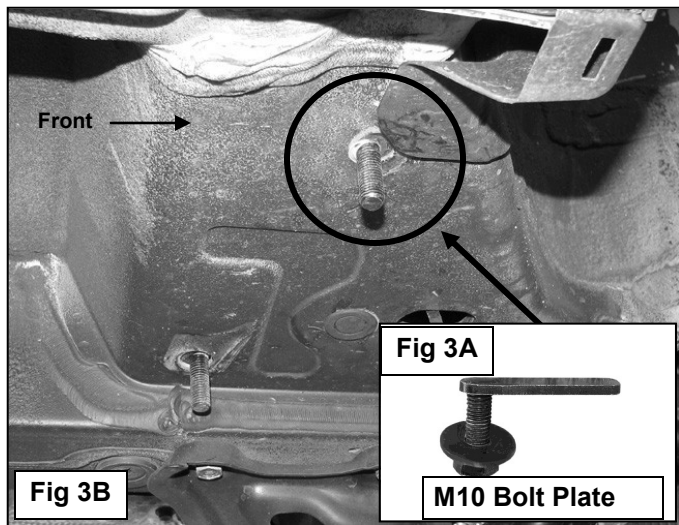
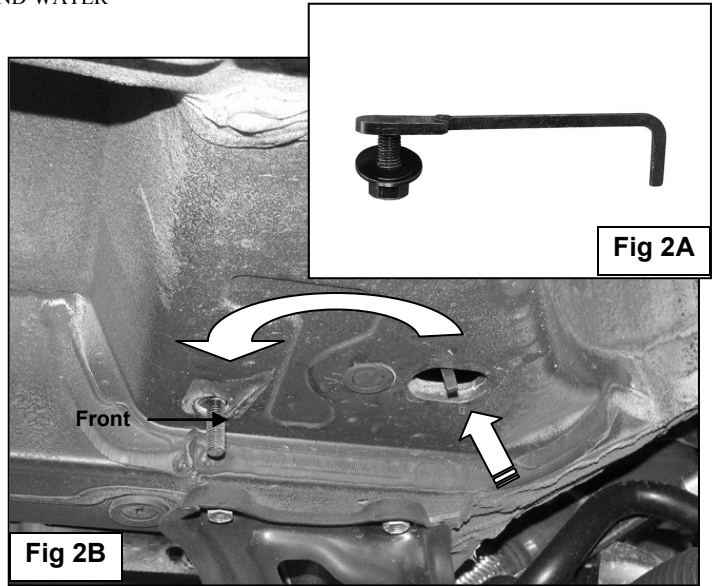
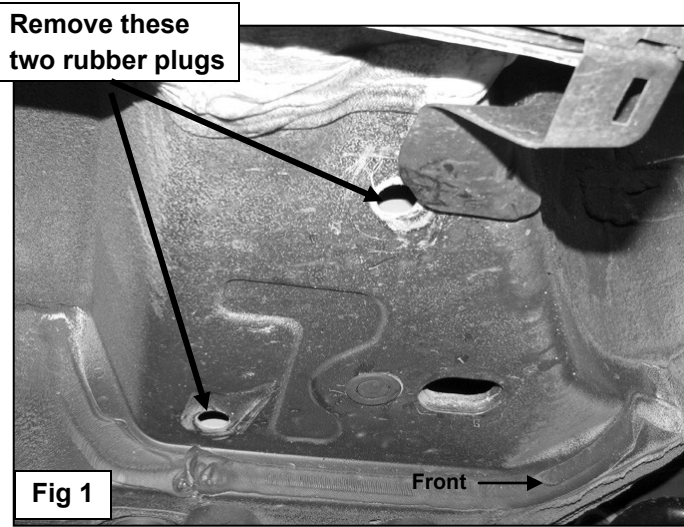
Thank You for choosing Westin products
For Additional installation assistance please call
Customer service (800) 793-7846
www.westinautomotive.com

1/2" Lock Washer and (1) 1/2" Flat Washer, (Figure 9). Leave loose. Next, lift the Sidebar up to the rear Mounting Bracket and line up the (2) mounting holes. Bolt the Sidebar to the Bracket with (2) M10 Hex Bolts, (4) M10 OD x 2mm Flat Washers, (2) M10 Lock Washers and (2) M10 Hex Nuts, (Figure 8). Snug but do not tighten hardware at this time.

7. Level and adjust Sidebar properly and tighten all hardware. Torque all 1/2" hardware to 55-60 ft lbs, M12 to 50-55 ft lbs, and M10 to 40-45 ft lbs
8. Repeat steps 2-7 for drivers side installation.

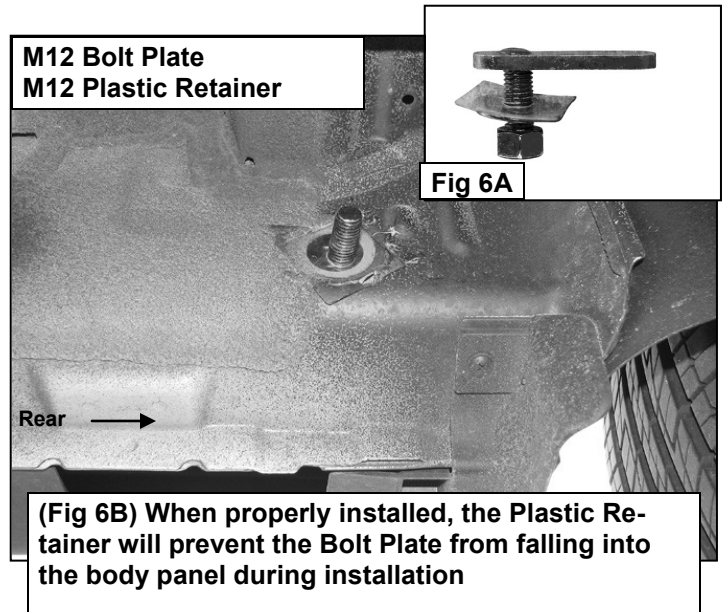
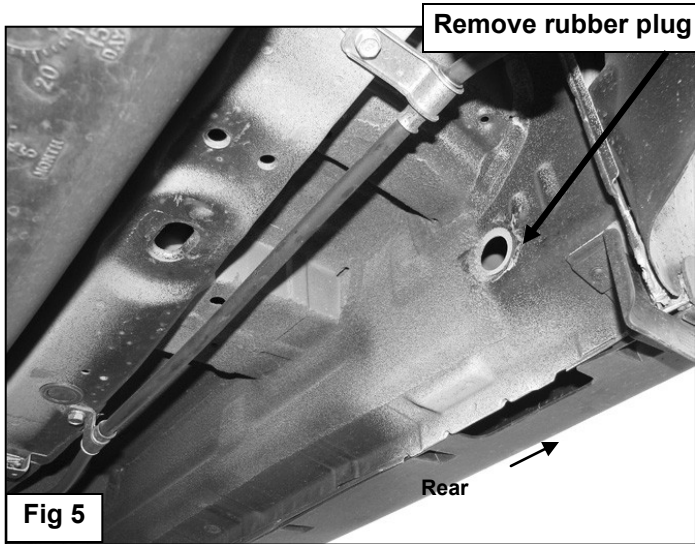
CARE INSTRUCTIONS

- REGULAR WAXING IS RECOMMENDED. DO NOT USE ANY TYPE OF POLISH OR WAX THAT MAY CONTAIN ABRASIVES
- STAINLESS STEEL PRODUCTS CAN BE CLEANED WITH MILD SOAP AND WATER. STAINLESS STEEL POLISH SHOULD BE USED TO POLISH SMALL SCRATCHES.
- GLOSS BLACK FINISHES SHOULD BE CLEANED WITH MILD SOAP AND WATER



Westing Automotive Products, Inc.
5200 N. Irwindale Ave. Suite 220
Irwindale, Ca. 91706

Thank You for choosing Westin products
For Additional installation assistance please call
Customer service (800) 793-7846
www.westinautomotive.com



(Fig 6B) When properly installed, the Plastic Retainer will prevent the Bolt Plate from falling into the body panel during installation

