

2007-2015 JEEP WRANGLER 2DR & 4 DR  
W/O FACTORY HITCH

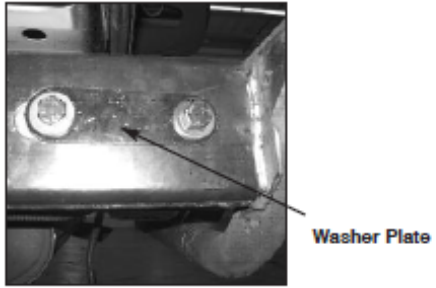
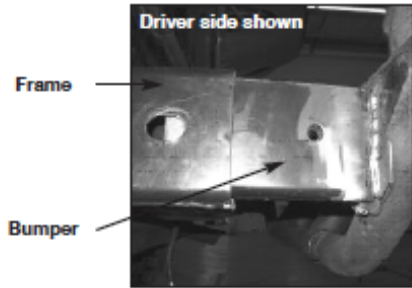
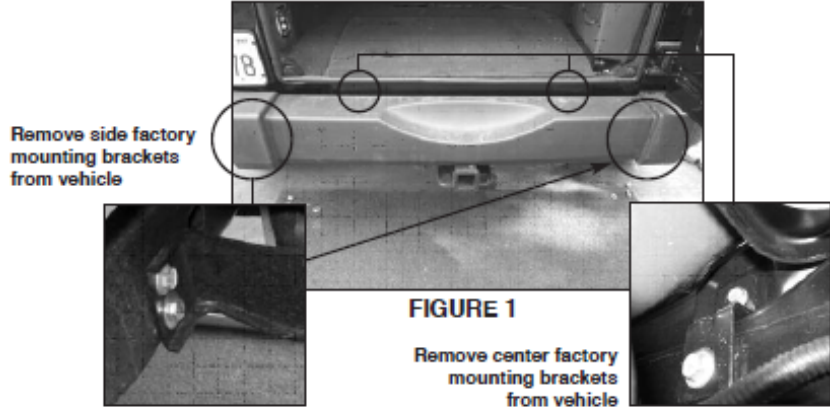
**Trailblazer - Rear Bumper**

**PART NUMBER**  
**42-3015**

**REQUIRED TOOLS**  
• Ratchet  
• Torque Wrench

PARTS	
QTY	PRODUCT
1	Rear Bumper
4	12mm x 30mm Hex Head Bolts
4	12mm Flat Washers
4	12mm Lock Washers
2	Washer Plates

**WARRANTY**  
**3 YEAR**



**PART 1:**

1. REMOVE CONTENTS FROM BOX. VERIFY ALL PARTS ARE PRESENT. READ INSTRUCTIONS CAREFULLY.

**NOTE:** THIS PRODUCT WILL NOT WORK WITH FACTORY SPARE TIRE CARRIER.

- Remove factory bumper by removing the side brackets and the two center brackets behind the factory bumper (Figure 1).
- With help carefully mount the Trailblazer Bumper onto vehicle by inserting the brackets on the Trailblazer Bumper into vehicle's frame (Figure 2).
- Position Washer Plate on the outer side of the frame. Align holes on the Washer Plate with holes on the frame and the Mounting Bracket. Secure them together with the included (4) 12mm x 30mm Hex Head Bolts, (4) 12mm Flat Washers, and (4) Lock Washers (Figure 3). Do not tighten at this time.
- Level and adjust the Trailblazer Bumper, then tighten all hardware to 55 ft/lb.
- Periodically check and retighten the hardware as necessary.

**CARE INSTRUCTIONS**

- BLACK FINISHES SHOULD BE CLEANED WITH MILD SOAP AND WATER



AUTOMOTIVE PRODUCTS, INC.  
San Dimas, California

## WARNINGS & NOTICES FOR THE INSTALLATION OF WESTIN TOWING PRODUCTS - CLASS III RECEIVER HITCH

### NOTICE

Westin Receiver Hitches are designed to accommodate a 2" - square receiver draw bar rated for class III/IV towing. Closely follow all Westin Installation Instructions for the proper installation of product. Improper installation can result in death, serious injury, and/or product and vehicle damage. In the operation of these products, it is imperative to observe precautions for your personal safety and the safety of others.

### **WARNING**

Failure to follow these instructions could lead to death, personal injury, and / or property damage.

#### FASTENERS:

All Westin supplied fasteners must be utilized and installed in accordance with the installation instructions and apply torque to the specifications as defined. **DOUBLE CHECK ALL FASTENERS BEFORE INITIAL USE, AND PERIODICALLY IN THE FUTURE TO ENSURE PROPER FUNCTION AND SAFETY.**

#### DRILLING:

Most Westin products do not require drilling for installation. If drilling is defined as required, use caution when drilling a vehicle. **FAILURE TO REVIEW AN AREA TO BE DRILLED MAY RESULT IN PERSONAL INJURY AND/OR INJURY TO OTHERS AS WELL AS VEHICLE DAMAGE.**

#### EYE PROTECTION:

**ALWAYS WEAR SAFETY GLASSES OR GOGGLES DURING THE INSTALLATION PROCESS TO AVOID PERSONAL INJURY.**

#### MAXIMUM TOWING/CARRYING CAPACITY:

The Westin Receiver Hitches will have a visible tow rating label affixed directly on the product. User should never exceed the vehicle manufacturers maximum tow and weight rating regardless of the capacity of the hitch. **FAILURE TO FOLLOW THESE GUIDELINES WILL VOID THE WESTIN WARRANTY AND MAY RESULT IN PERSONAL INJURY AND/OR INJURY TO OTHERS AS WELL AS VEHICLE DAMAGE.**



Westin Automotive Products, Inc.  
320 Covina Blvd  
San Dimas, Ca. 91773