



SIGNATURE OF QUALITY

INSTRUCTIONS—INSTRUCCIONES—CONSIGNES

APPLICATION: TOYOTA TACOMA 2005-2010
PART NUMBER:37-01600, 37-01605

AUTOMOTIVE PRODUCTS, INC.

ITEM	QUANTITY	ITEM DESCRIPTION	TOOLS NEEDED
1	1	LIGHT BAR ASSEMBLY	16MM SOCKET AND RACHET
2,3	2	MOUNTING BRACKETS (2) DRIVERS SIDE, (3) PASSENGER SIDE	16MM WRENCH
4	4	M10 X 25MM HEX HEAD FLANGE BOLT	TORQUE WRENCH
5	4	M10 SERRATED FLANGE HEX NUT	
6	4	M10 TOOTH LOCK WASHER	

1. Remove contents from box. Verify that all parts listed are present and free from damage. Read installation instructions carefully before attempting installation.
2. Starting at the driver side. Remove the (x2) 10MM hex nuts located at the bumper mounting bracket going to the main chassis frame. Attach the driver side mounting bracket to the factory studs and secure with the factory nuts. Do not fully tighten at this time.
3. Repeat step 2 for the passenger side mounting bracket.
4. Insert the light bar assembly through the lower bumper grille opening and secure the light bar to the mounting brackets using the supplied M10 bolts, lock washers and hex nuts.
5. Align light bar assembly and mounting brackets as desired and fully tighten all fasteners. Tighten M10 fasteners to approx. 25-35 lbs/ft.



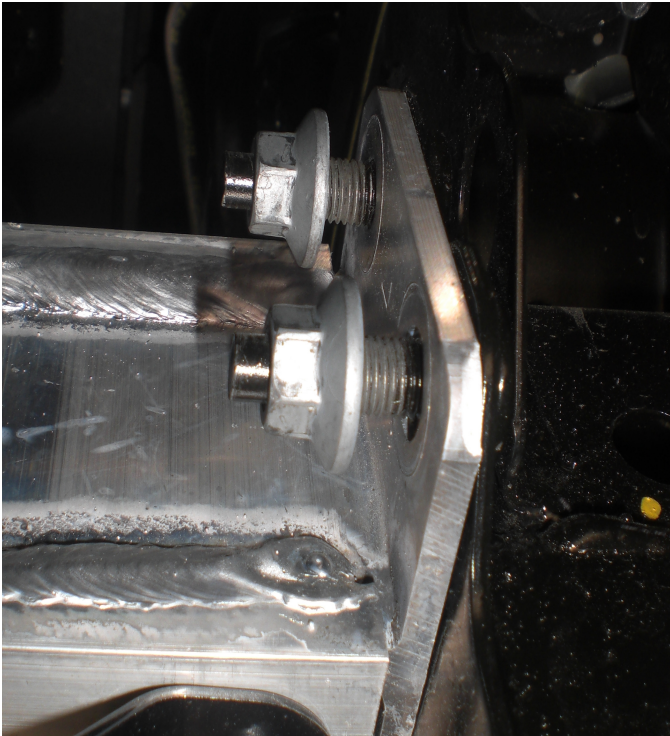
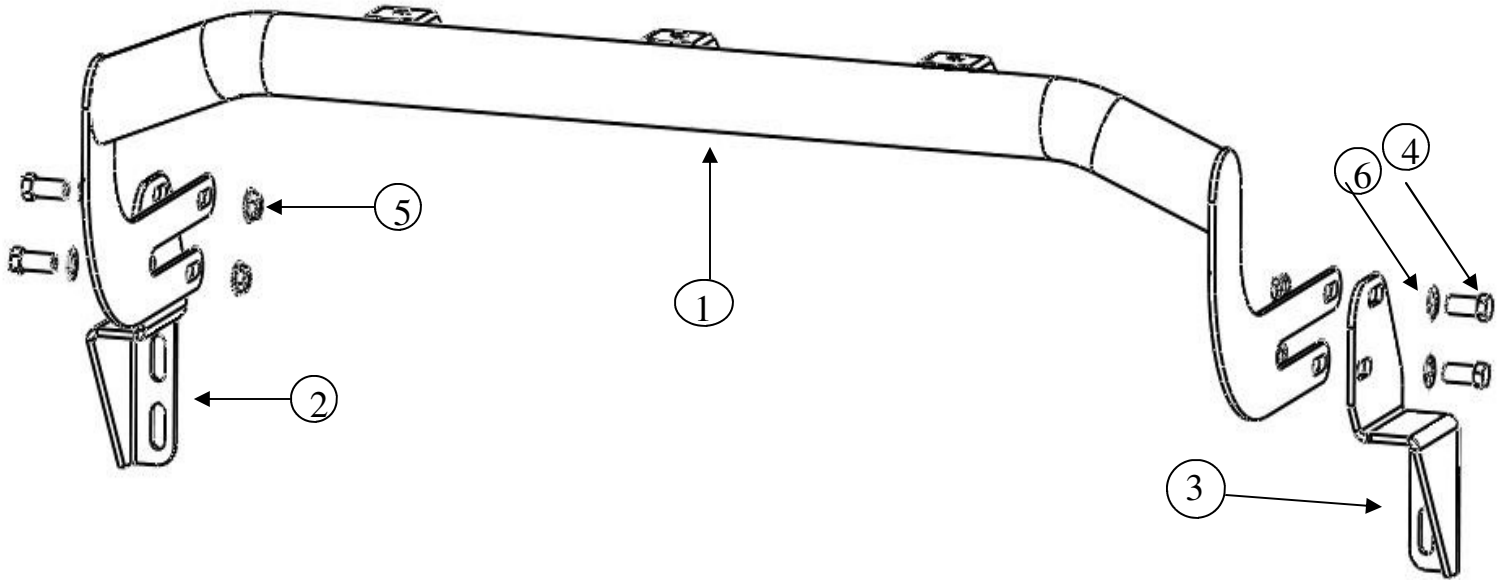
Westin Automotive Products, Inc.
5200 N. Irwindale Ave. Ste 220
Irwindale, Ca 91706

Thank You for choosing Westin products
For additional installation assistance please call
Customer Service (800)793-7846



INSTRUCTIONS—INSTRUCCIONES—CONSIGNES

APPLICATION: TOYOTA TACOMA 2005-2010
PART NUMBER: 37-01600, 37-01605



Westin Automotive Products, Inc.
5200 N. Irwindale Ave. Ste 220
Irwindale, Ca 91706

Thank You for choosing Westin products
For additional installation assistance please call
Customer Service (800)793-7846