



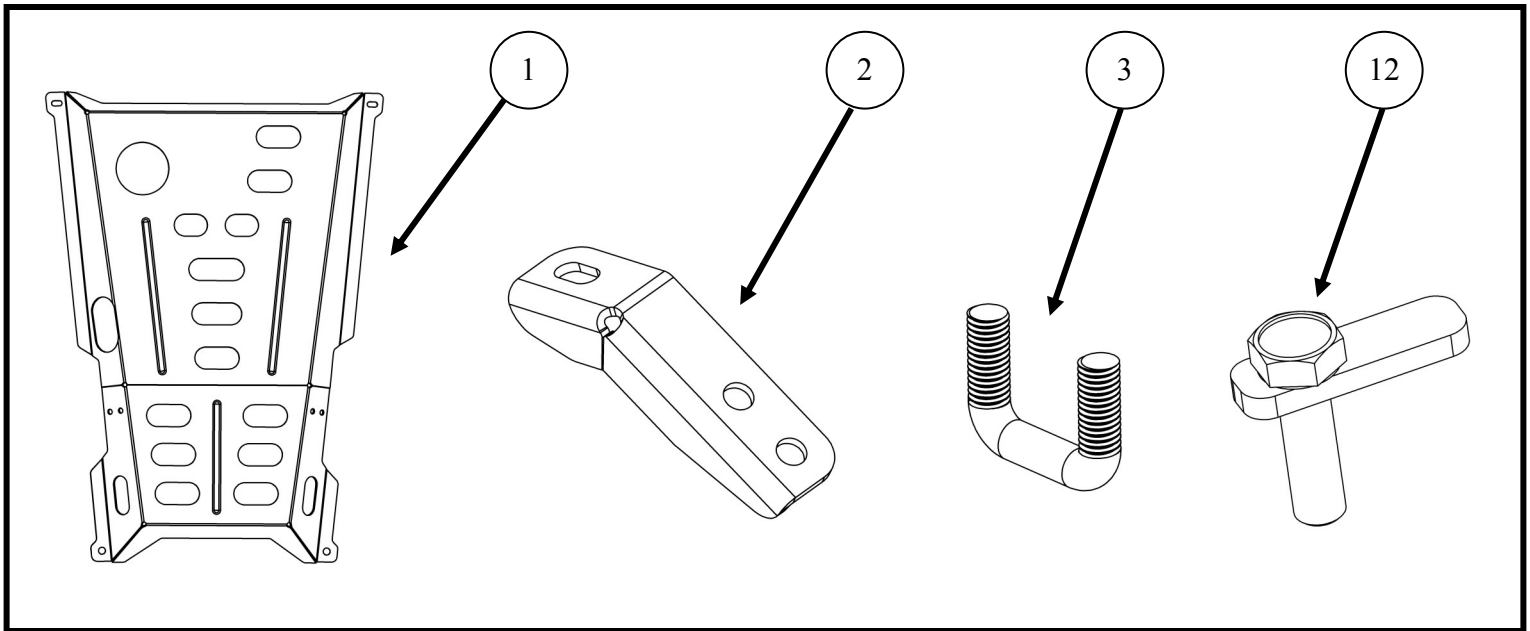
INSTALLATION INSTRUCTIONS

AUTOMOTIVE PRODUCTS, INC.

APPLICATION: 2012 - 2015 FORD EXPLORER INTERCEPTOR UTILITY
PART NUMBER: 36-10005
POLICE SKID PLATE

ITEM	QUANTITY	DESCRIPTION	TOOLS NEEDED
1	1	SKID PLATE	17MM SOCKET
2	2	SUPPORT BRACKET	17MM WRENCH
3	2	M10 U-BOLT	15MM SOCKET
4	2	M10-1.50X90 HEX HEAD CAP SCREW, CLASS 8.8	TORQUE WRENCH
5	2	M10-1.50X30 HEX HEAD CAP SCREW, CLASS 8.8	RATCHET
6	4	M10-1.50 HEX NUT, CLASS 8	
7	4	M10 SPLIT LOCK WASHER	
8	6	M10-1.50 SERRATED FLANGE NUT, CLASS 8	
9	2	M10 FLAT WASHER, LARGE	
10	6	M10 FLAT WASHER, SMALL	
11	1	M10 FISH WIRE	
12	2	M10 BOLT PLATE	

ANTI-SEIZE LUBRICANT MUST BE USED ON ALL STAINLESS STEEL FASTENERS TO PREVENT THREAD DAMAGE AND GALLING



Westin Automotive Products, Inc.
320 W. Covina Blvd
San Dimas, Ca. 91773

P.N.: 75-2003-RevA

ECO #: W15-0030

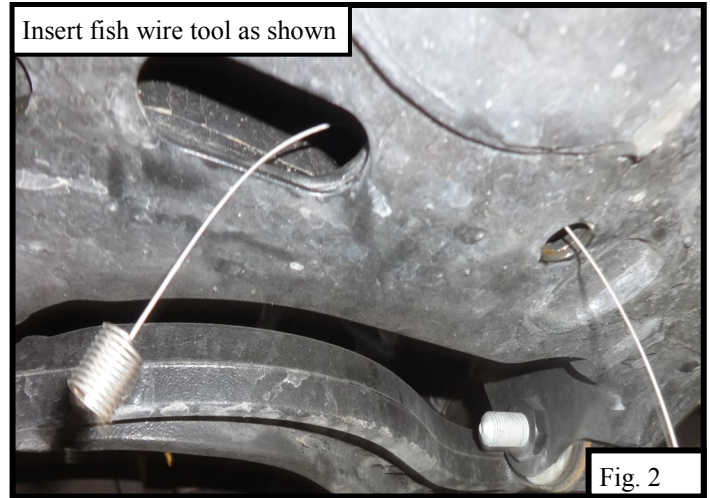
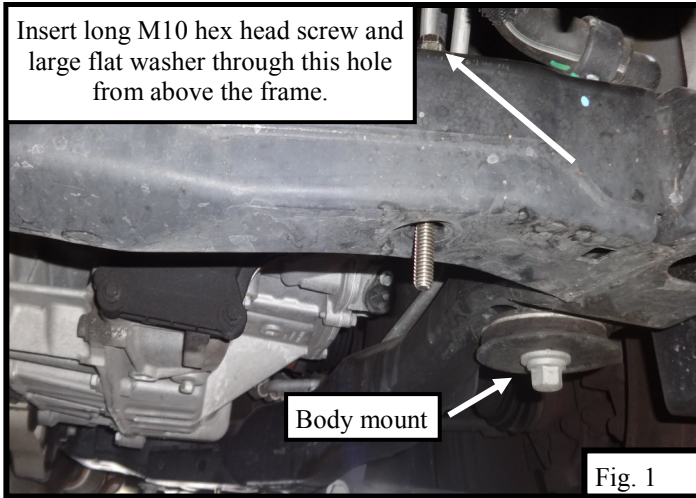
1

Thank You for choosing Westin products
For Additional installation assistance please call
Customer service (800) 793-7846
www.westinautomotive.com

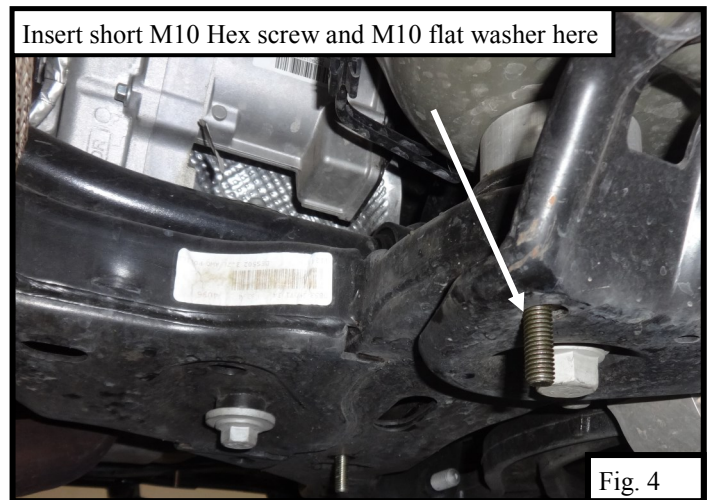
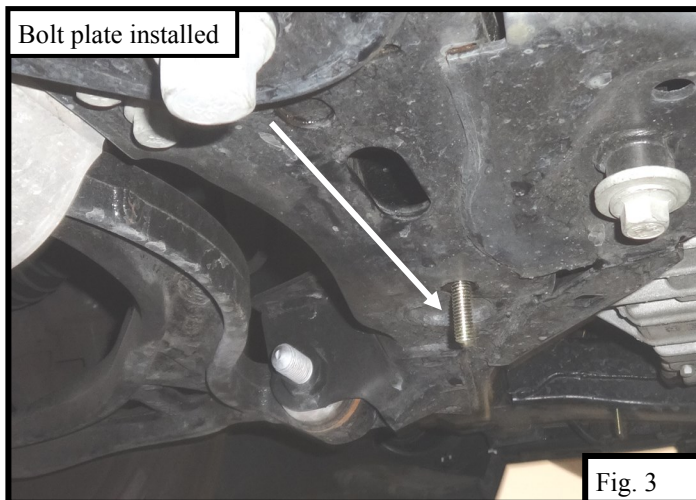
DATE: 06/02/15

PROCEDURE

1. Remove contents from box, verify if all parts listed are present and free from damage. Carefully read and understand all instructions before attempting installation. **Failure to identify damage before installation could lead to a rejection of any claim.**
2. Starting underneath the front of the vehicle on the driver side, locate the hole through the frame near the body mount. Insert (1) Long M10 Hex head cap screw (**Item # 4**) and (1) large M10 flat washer (**Item #9**) from above the frame as shown in **Figure 1**.
3. Insert the supplied fish wire tool through the hole in the frame as shown in **Figure 2**, so that the threaded end exits through the slot in the frame. Thread one M10 bolt plate to the threaded end of the fish wire and then guide and pull the other end of the fish wire so that the bolt plate exits the hole through which the fish wire was initially fed through. (**FIG 3**)

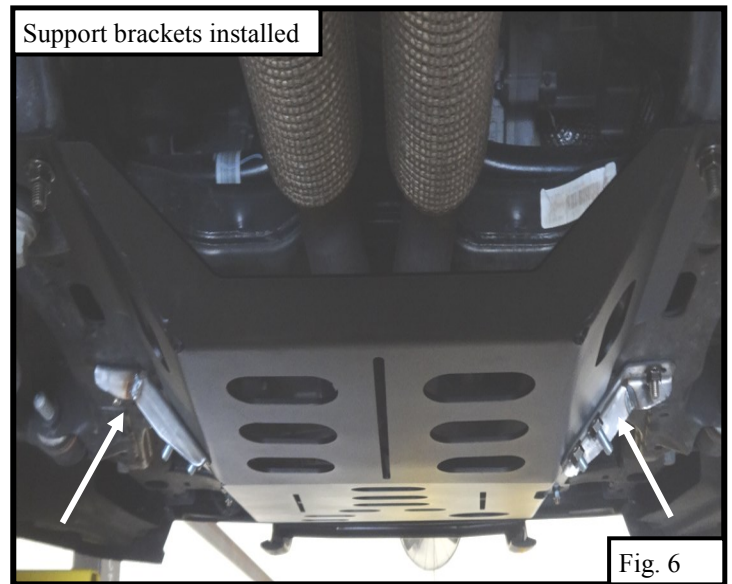
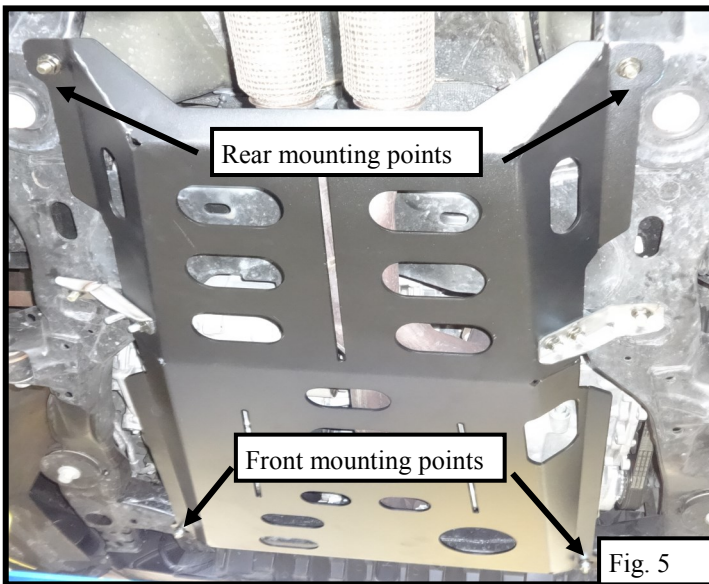


4. Insert (1) short M10 Hex head cap screw (**Item # 5**) and (1) small M10 flat washer (**Item #10**) through the rearmost hole in the front frame as shown in **Figure 4**.
5. Repeat steps 2-4 for passenger side.



Westin Automotive Products, Inc.
320 W. Covina Blvd
San Dimas, Ca. 91773

6. With assistance, hold the skid plate up in position underneath the vehicle. Align the two front and rear mounting holes of the skid plate with the bolts installed in steps 2 and 4. Loosely secure the front and rear mounting points of the skid plate to the bottom of the vehicle's frame using (4) M10 flat washers (**Item # 10**), (4) M10 Split lock washers (**Item # 7**), and (4) M10 Hex nuts (**Item # 6**). Refer to **Figure 5** for a picture showing the skid plate mounted on vehicle.
7. Place the support brackets (**Item # 2**) up against the skid plate and the frame of the vehicle. Loosely attach the support brackets to the skid plate, making sure to align the two holes of the support brackets with those of the skid plate, by using the provided U-bolt (**Item # 3**) and (4) M10 serrated flange nuts (**Item # 8**). Loosely attach the other end of the support brackets to the vehicle's frame, making sure that the studs of the bolt plates align with the holes of the brackets, using (2) M10 serrated flange nuts (**Item # 8**). (**FIG 6**).



8. Align and adjust the skid plate as necessary, then fully tighten all hardware at this time. Torque all M10 fasteners to 30 ft-lbs.
9. Refer to **Figure 7** for a picture showing the hardware used to mount the skid plate onto the vehicle.



Westin Automotive Products, Inc.
320 W. Covina Blvd
San Dimas, Ca. 91773

Skid plate hardware assembly

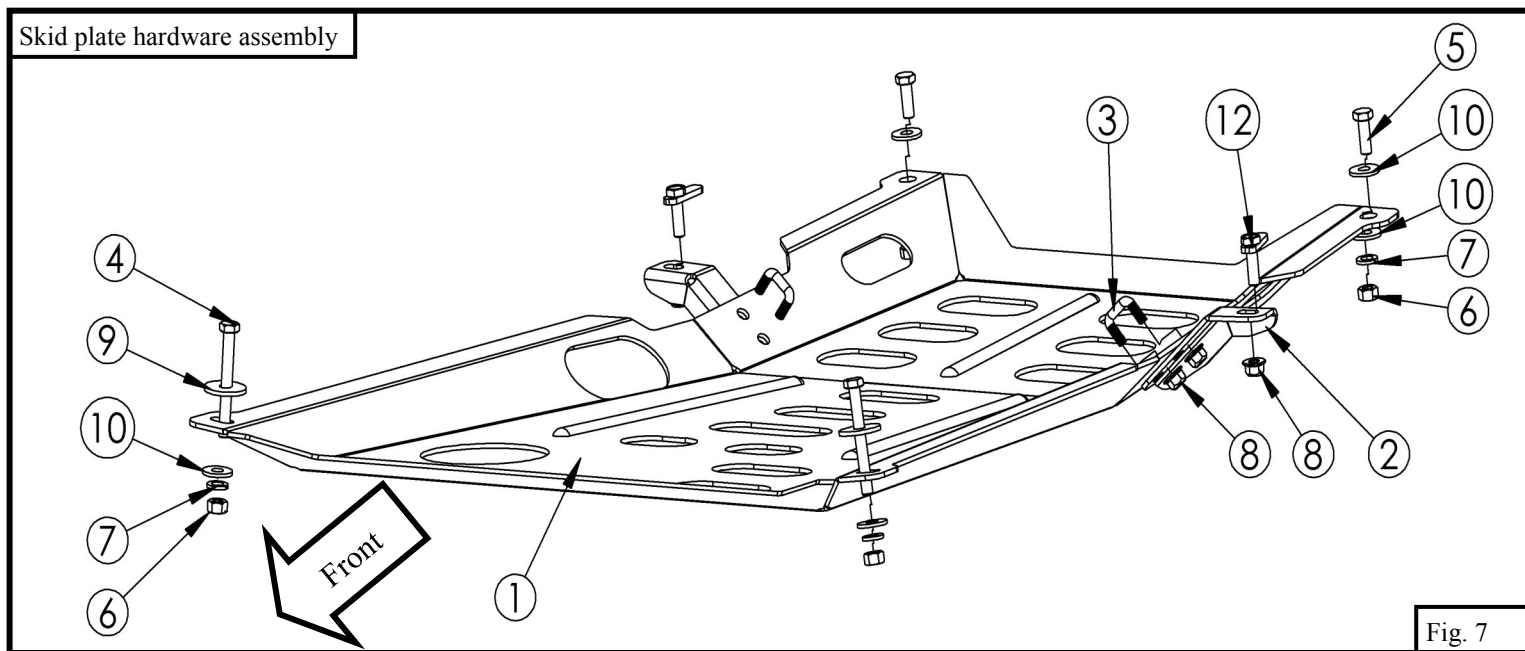


Fig. 7



Westin Automotive Products, Inc.
320 W. Covina Blvd
San Dimas, Ca. 91773

Thank You for choosing Westin products
For Additional installation assistance please call
Customer service (800) 793-7846
www.westinautomotive.com

INSTALLATION COMPLETE



CARE INSTRUCTIONS

- REGULAR WAXING IS RECOMMENDED. DO NOT USE ANY TYPE OF POLISH OR WAX THAT MAY CONTAIN ABRASIVES.
- STAINLESS STEEL PRODUCTS CAN BE CLEANED WITH MILD SOAP AND WATER. STAINLESS STEEL POLISH SHOULD BE USED TO POLISH SMALL SCRATCHES.
- GLOSS BLACK FINISHES SHOULD BE CLEANED WITH MILD SOAP AND WATER.



Westin Automotive Products, Inc.
320 W. Covina Blvd
San Dimas, Ca. 91773

Thank You for choosing Westin products
For Additional installation assistance please call
Customer service (800) 793-7846
www.westinautomotive.com