

# INSTALLATION INSTRUCTIONS

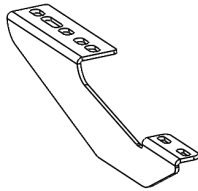
## Step Board Mounting Kit



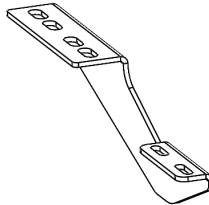
**APPLICATION:**  
Ford Transit Van 150/250/350 2015-2021 (For 54" Rear Doors)  
**PART NUMBER:**  
27-2315

CONTENT			
ITEM	QUANTITY	DESCRIPTION	TOOLS NEEDED
1	1	DRIVER MOUNTING BRACKET	19MM SOCKET
2	1	PASSENGER MOUNTING BRACKET	19MM WRENCH
3	2	M12 NUT PLATE	RATCHET
4	4	LONG M12 HEX HEAD SCREW	TORQUE WRENCH
5	1	SHORT M12 HEX HEAD SCREW	
6	5	M12 SPLIT LOCK WASHER	
7	6	M12 FLAT WASHER	

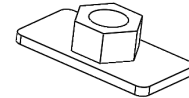
**ANTI-SEIZE LUBRICANT MUST BE USED ON ALL STAINLESS STEEL FASTENERS TO PREVENT THREAD DAMAGE AND GALLING**



ITEM 1



ITEM 2

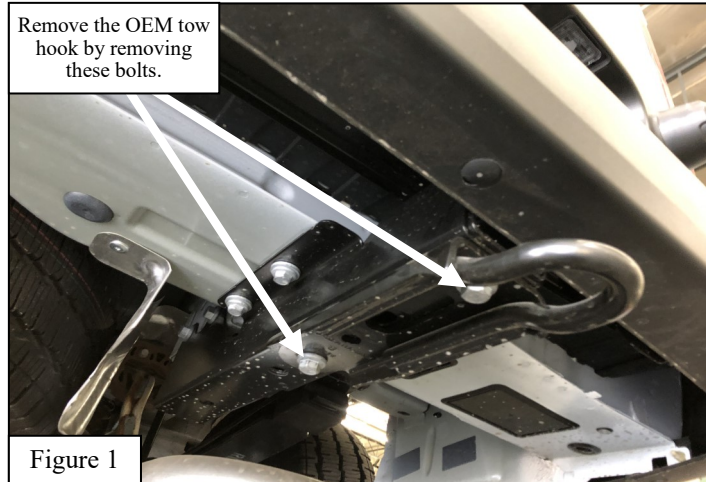


ITEM 3

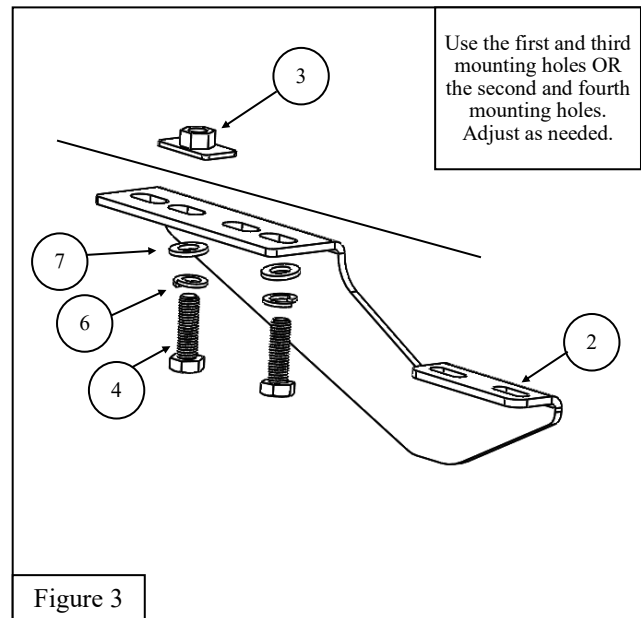
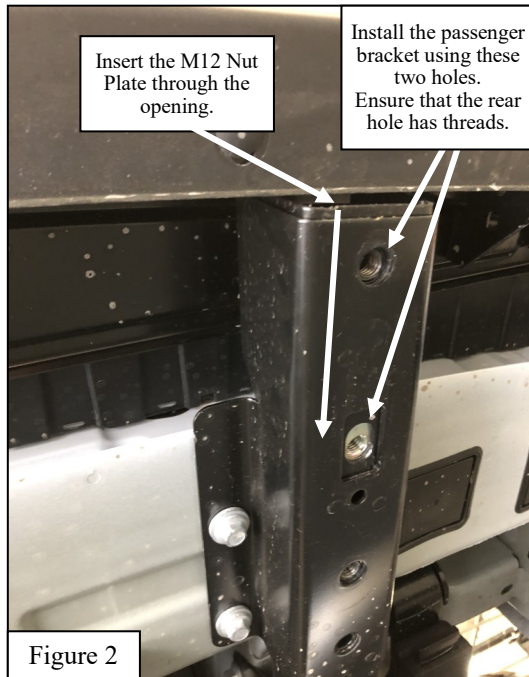
### PROCEDURE

1. Remove contents from box, verify if all parts listed are present and free from damage.  
Carefully read and understand all instructions before attempting installation.  
**Failure to identify damage before installation could lead to a rejection of any claim.**

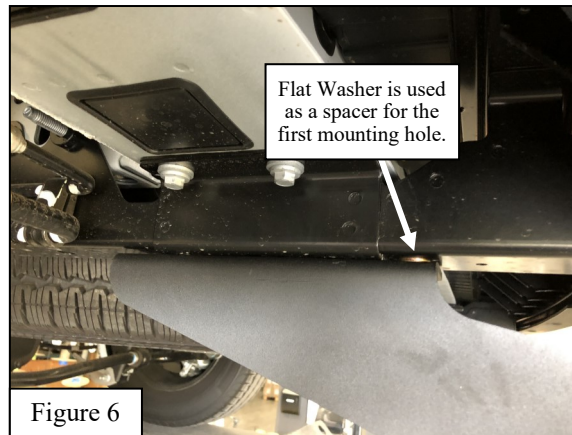
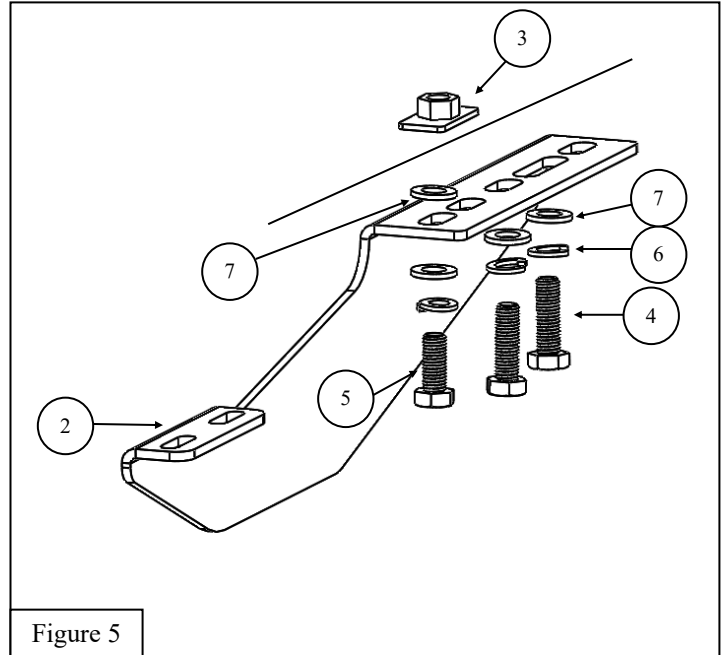
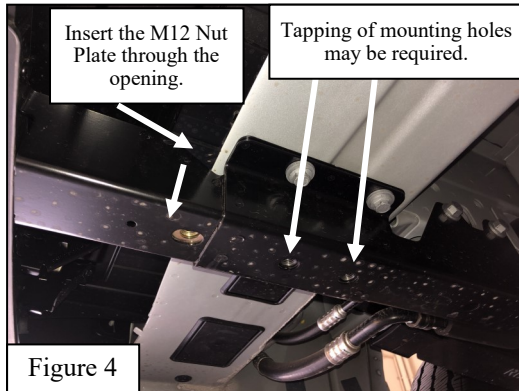
2. Starting on the passenger side, remove the OEM tow hook. See **Figure 1** for reference.



3. Check the chassis on the passenger's side to ensure that there are M12-1.75 threads. If needed, use a M12-1.75 tap to create new threads. See **Figure 2** for hole location.
4. Locate and install the Passenger Mounting Bracket (2) using the provided M12 hardware (4, 6, and 7), and the M12 Nut Plate (3). See **Figure 2 and 3** for reference. *Note: Use the first and third mounting holes OR the second and fourth mounting holes. Adjust as needed.*



5. Check the chassis on the driver's side to ensure that there are M12-1.75 threads. If needed, use a M12-1.75 tap to create new threads. See **Figure 4** for hole locations.
6. Locate and install the Driver Mounting Bracket (1) using the provided M12 hardware (4-7), and the M12 Nut Plate (3). See **Figures 4, 5 and 6** for reference. **Note:** Use the first, third, and fifth mounting holes OR the second, fourth, and sixth mounting holes. Adjust as needed. Ensure that both mounting brackets use the same set of mounting holes (front or rear).



6. Align and adjust the brackets as needed. Tighten and torque all M12 hardware to 65 ft-lbs once the running board has been installed (refer to the instruction sheet included with the running board for running board installation instructions).



## COMPLETE INSTALLATION



### CARE INSTRUCTIONS

- REGULAR WAXING IS RECOMMENDED. DO NOT USE ANY TYPE OF POLISH OR WAX THAT MAY CONTAIN ABRASIVES.
- STAINLESS STEEL PRODUCTS CAN BE CLEANED WITH MILD SOAP AND WATER. STAINLESS STEEL POLISH SHOULD BE USED TO POLISH SMALL SCRATCHES.
- GLOSS BLACK FINISHES SHOULD BE CLEANED WITH MILD SOAP AND WATER.

**WESTIN**

Westin Automotive Products, Inc.  
320 W. Covina Blvd  
San Dimas, Ca. 91773

Thank you for choosing Westin products  
for additional installation assistance please call  
Customer Service (800) 793-7846  
[www.westinautomotive.com](http://www.westinautomotive.com)



## WARNING



Failure to follow these instructions could lead to death, personal injury, and / or property damage.

Failure to follow these instructions could lead to death, personal injury, and / or property damage.

### FASTENERS:

All Westin supplied fasteners must be utilized and installed in accordance with the installation instructions and apply torque to the specifications as defined. **DOUBLE CHECK ALL FASTENERS BEFORE INITIAL USE, AND PERIODICALLY IN THE FUTURE TO ENSURE PROPER FUNCTION AND SAFETY.**

### DRILLING:

Most Westin products do not require drilling for installation. If drilling is defined as required, use caution when drilling a vehicle. **FAILURE TO REVIEW AN AREA TO BE DRILLED MAY RESULT IN PERSONAL INJURY AND/OR INJURY TO OTHERS AS WELL AS VEHICLE DAMAGE.**

### EYE PROTECTION:

**ALWAYS WEAR SAFETY GLASSES OR GOGGLES DURING THE INSTALLATION PROCESS TO AVOID PERSONAL INJURY.**

### MAXIMUM TOWING/CARRYING CAPACITY: (if applicable)

The Westin Receiver Hitches will have a visible tow rating label affixed directly on the product. User should never exceed the vehicle manufacturers maximum tow and weight rating regardless of the capacity of the hitch. **FAILURE TO FOLLOW THESE GUIDELINES WILL VOID THE WESTIN WARRANTY AND MAY RESULT IN PERSONAL INJURY AND/OR INJURY TO OTHERS AS WELL AS VEHICLE DAMAGE.**

### FOR CALIFORNIA RESIDENTS ONLY-PROP 65 WARNING:

Some products may contain chemicals such as DEHP, which can cause cancer, birth defects or other reproductive harm. For more info go to [www.p65warnings.ca.gov](http://www.p65warnings.ca.gov)



Westin Automotive Products, Inc.  
320 W. Covina Blvd  
San Dimas, Ca. 91773