



# INSTRUCTIONS—INSTRUCCIONES—CONSIGNES

APPLICATION: 2010-2014 FORD EDGE  
APP PART # 32-21050, 32-21055  
CONTOUR LIGHT BAR

AUTOMOTIVE PRODUCTS, INC.

ITEM	QUANTITY	DESCRIPTION	TOOLS NEEDED
1	1	CONTOUR BAR	TORQUE WRENCH
2	1	MOUNTING BRACKET DRIVER SIDE	RATCHET
3	1	MOUNTING BRACKET PASSENGER SIDE	5.5MM SOCKET
4	1	MOUNTING BRACKET SUPPORT STRAP DRIVER SIDE	14MM SOCKET
5	1	MOUNTING BRACKET SUPPORT STRAP PASSENGER SIDE	18MM SOCKET
6	2	M12 BOLT PLATE	16MM WRENCH
7	2	M12 HEX HEAD CAP SCREWS	2.5" HOLE SAW/ POWER DRILL OR BODY SAW
8	2	M12 LARGE FLAT WASHERS	
9	4	M12 LOCK WASHERS	
10	2	M12 HEX NUTS	
11	2	M12 SMALL FLAT WASHERS	
12	2	M10 LONG HEX HEAD CAP SCREWS	
13	2	M10 FLAT WASHERS	
14	2	M10 FLANGE HEX NUTS	

1. Remove contents from box, verify if all parts listed are present and free from damage. Carefully read and understand all instructions before attempting installation.
2. From underneath the front of the vehicle remove the lower splash guard using the 5.5mm socket and set aside. *Note: The splash guard must be trimmed if re-installing.*
3. From underneath the front of the vehicle starting on the drivers side, take the M12 bolt plate (item 6) and place through the larger forward hole in the frame bumper support and into the smaller slot. **(fig 1)**
4. Attach the driver's side mounting bracket (item 2) by placing it against the frame and attaching to the bolt plate using (1) M12 hex nut (item 10), (1) M12 small flat washer (item 11), (1) M12 lock washer (item 9). **(fig 2)** *Do not fully tighten at this time.*
5. Install the driver's side mounting bracket support strap (item 4) to the frame support using (1) M10 long hex head cap screw (item 12), (1) M10 flat washer (item 13) (top of frame support), and (1) M10 flange nut (item 14), (below frame support). **(fig 3)** *Do not fully tighten at this time.*
6. Follow steps 3-5 for the passenger side.
7. Note on the front plastic lower valance where the contour bar mounts to the brackets and trim valance to fit around the bar ends. **(fig 4)** *(A 2-1/2" hole saw or a body saw can be used to cut holes in the valance for the bar ends.)*
8. If re-installing lower splash guard, trim to fit around mounting brackets and install at this point.
9. Loosely install the contour bar (item 1) to the mounting brackets and support straps with the M12 hex head cap screws (item 7), M12 lock washers (item 9), and M12 flat washers (item 8). **(fig 5)**
10. Level and adjust contour bar and tighten all hardware at this time. **(fig 6)** Torque M12 hardware to 50-55ft-lbs, and M10 hardware to 30-35ft-lbs.

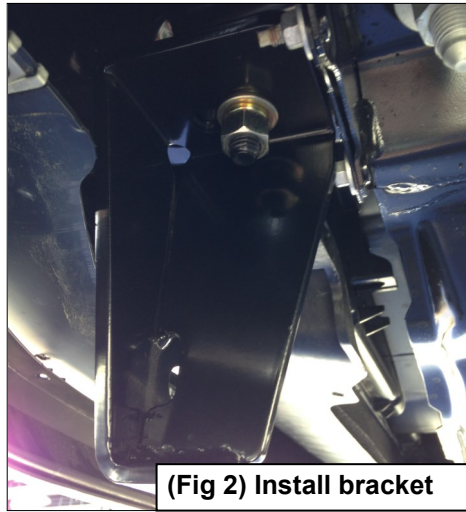
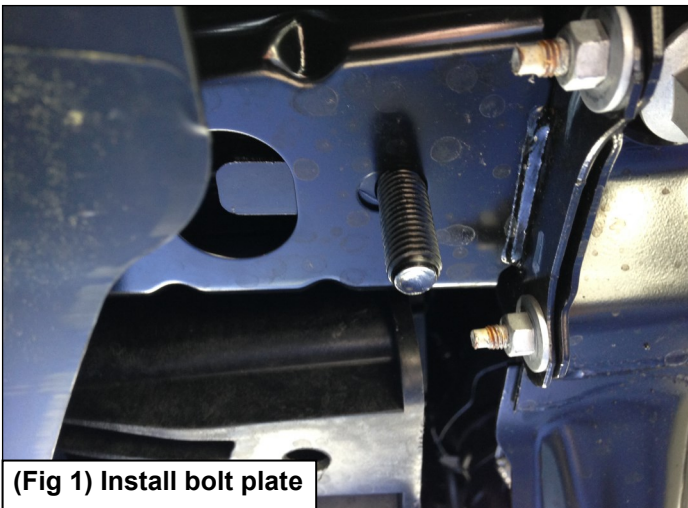
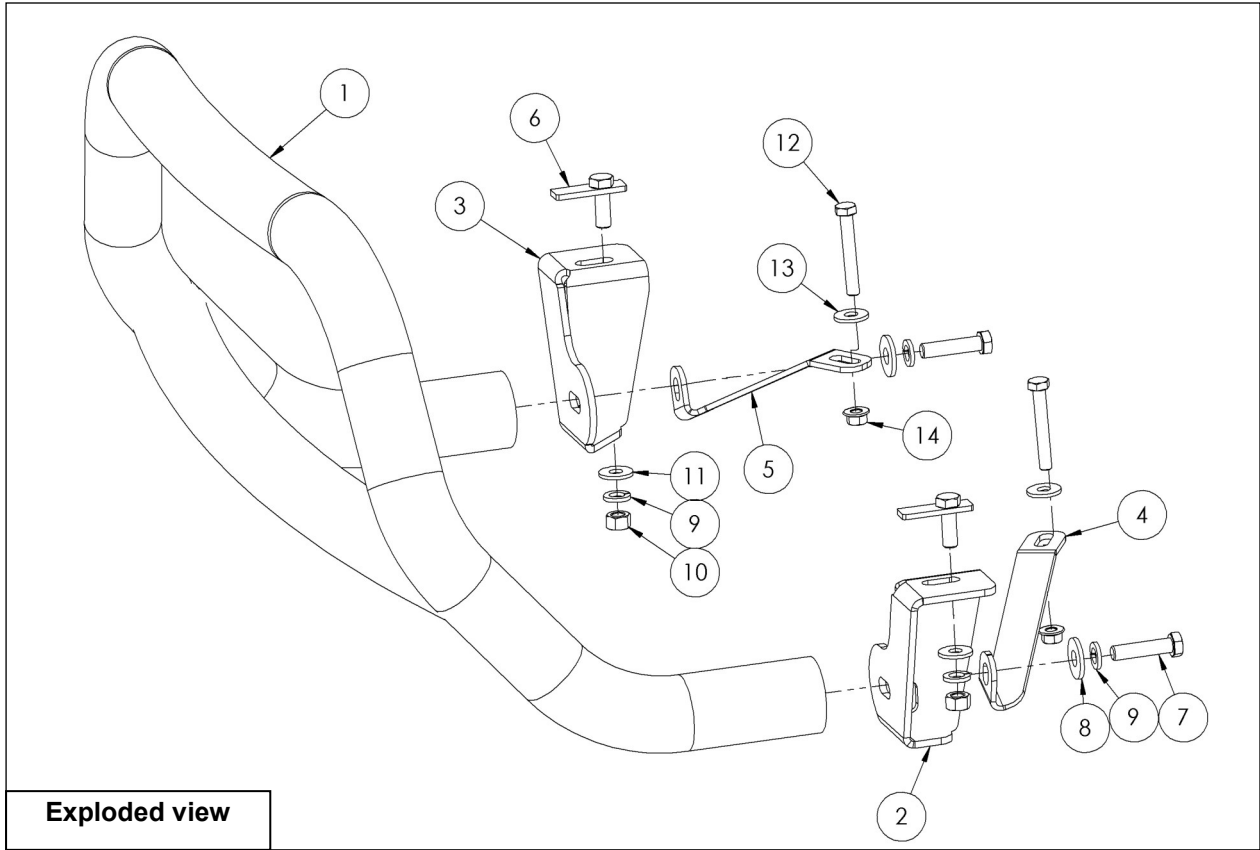
## CARE INSTRUCTIONS

- REGULAR WAXING IS RECOMMENDED. DO NOT USE ANY TYPE OF POLISH OR WAX THAT MAY CONTAIN ABRASIVES.
- STAINLESS STEEL PRODUCTS CAN BE CLEANED WITH MILD SOAP AND WATER. STAINLESS STEEL POLISH SHOULD BE USED TO POLISH SMALL SCRATCHES.
- GLOSS BLACK FINISHES SHOULD BE CLEANED WITH MILD SOAP AND WATER.



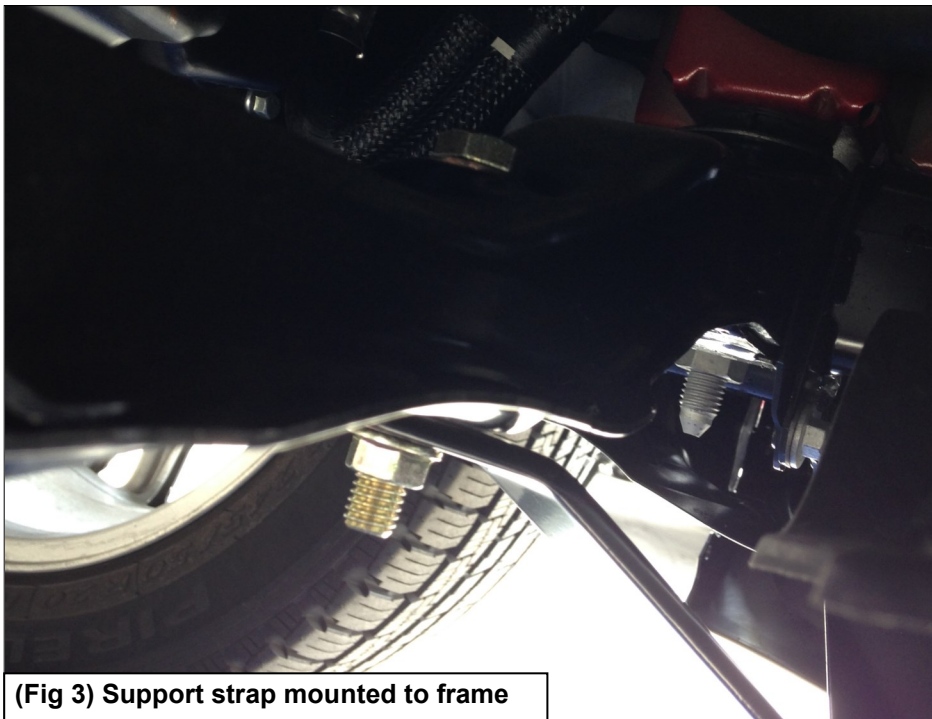
Westin Automotive Products, Inc.  
320 Covina Blvd  
San Dimas, Ca. 91773

Thank You for choosing Westin products  
For Additional installation assistance please call  
Customer service (800) 793-7846  
www.westinautomotive.com

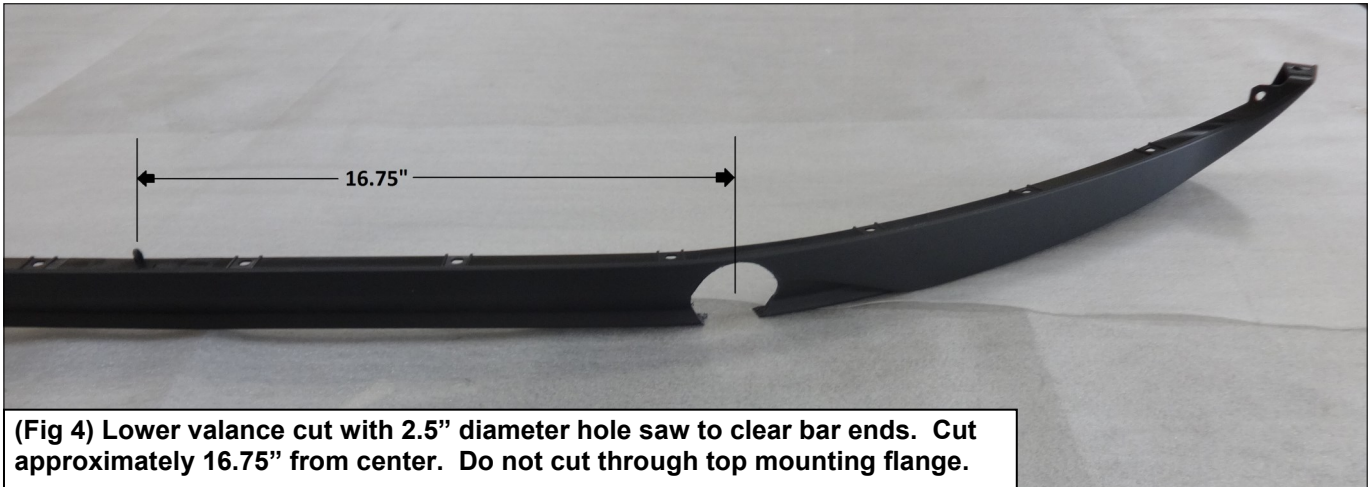


Westin Automotive Products, Inc.  
320 Covina Blvd  
San Dimas, Ca. 91773

Thank You for choosing Westin products  
For Additional installation assistance please call  
Customer service (800) 793-7846  
[www.westinautomotive.com](http://www.westinautomotive.com)



**(Fig 3) Support strap mounted to frame**



**(Fig 4) Lower valance cut with 2.5" diameter hole saw to clear bar ends. Cut approximately 16.75" from center. Do not cut through top mounting flange.**



**(Fig 5) Contour bar mounted to brackets**



**(Fig 6) Contour bar installed**



Westin Automotive Products, Inc.  
 320 Covina Blvd  
 San Dimas, Ca. 91773

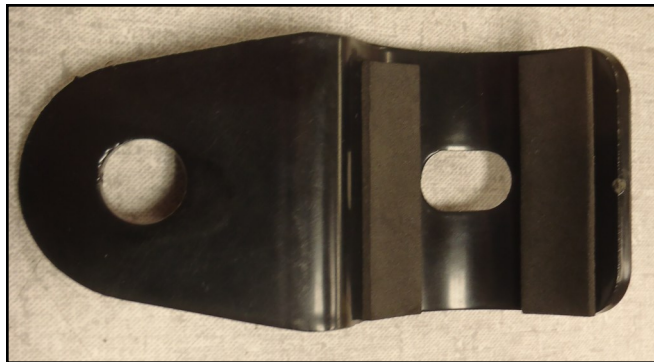
Thank You for choosing Westin products  
 For Additional installation assistance please call  
 Customer service (800) 793-7846  
[www.westinautomotive.com](http://www.westinautomotive.com)

### OPTIONAL LIGHT MOUNT TABS

ITEM	QUANTITY	DESCRIPTION	TOOLS NEEDED
15	2	LIGHT MOUNT BRACKET TABS	HEX KEY TOOL (INCLUDED)
16	2	M10 BUTTON HEAD STAINLESS STEEL CAP SCREWS	
17	2	M10 TOOTHED LOCK WASHERS	
18	2	M10 FLAT WASHERS	
19	1	ADHESIVE FOAM TAPE	

**ANTI-SEIZE LUBRICANT MUST BE USED ON ALL STAINLESS STEEL FASTENERS TO PREVENT THREAD DAMAGE AND GALLING**

1. Remove contents from box, verify if all parts listed are present and free from damage. Carefully read and understand all instructions before attempting installation.
2. Apply foam tape (item 19) to front and back of the tab facing where it mounts to the tube. (fig 7)
3. Using the supplied hex key tool, button head cap screws (item 16), lock washers (item 17), and flat washers (item 18), attach the bracket tabs (item 15) to the threaded inserts in the bottom of the cross tube. (fig 8)



(Fig 7) Foam tape applied to light tab



(Fig 8) Light tab installed on bar



Westin Automotive Products, Inc.  
320 Covina Blvd  
San Dimas, Ca. 91773

Thank You for choosing Westin products  
For Additional installation assistance please call  
Customer service (800) 793-7846  
[www.westinautomotive.com](http://www.westinautomotive.com)