



SIGNATURE OF QUALITY

AUTOMOTIVE PRODUCTS, INC.

INSTALLATION INSTRUCTIONS

CLASS III RECEIVER HITCH

APPLICATION: 2008-2014 DODGE CARAVAN / CHRYSLER TOWN & COUNTRY /
RAM TRUCKS C/V TRADESMAN / VOLKSWAGEN ROUTAN
APP PART # 65-1175

ITEM	QUANTITY	DESCRIPTION	TOOLS NEEDED
1	1	HITCH ASSEMBLY	18MM SOCKET
2	2	SPACER PLATE	16MM SOCKET
3	2	M10 U-BOLT	15MM SOCKET
4	4	M10 HEX NUT	RATCHET
5	4	M10 SPLIT LOCK WASHER	TORQUE WRENCH
6	4	M10 FLAT WASHER	

1. Remove contents from box, verify if all parts listed are present and free from damage. Carefully read and understand all instructions before attempting installation.
2. Starting at the driver side rear of the vehicle. Locate the factory M10 and M12 cap screws located under the driver side main uni-body channel. Remove using a 15mm socket & ratchet and an 18mm socket & ratchet. Do not discard as these will be used in the installation. FIGURE 1
3. At the passenger side. The exhaust assembly needs to be dropped in order to continue installation. There are two main hangers at the rear of the vehicle. These can be removed with a 13mm socket & ratchet. It is recommended to use a ratchet strap to support the exhaust to prevent damage. Then repeat step 2 for the passenger side. FIGURE 2
4. With assistance, raise the hitch assembly to the uni-body channels, secure the hitch with the factory M10 & M12 fasteners. Assemble loosely.
5. Feed one M10 u-bolt through the square slot of the hitch flange so that the other end drops down to the slot forward. Then attach the spacer plate to the bottom of the hitch flange using the supplied M10 flat washers, split lock washers and M10 hex nuts. Thread the nuts so that there is an even number of threads protruding the hex nut. FIGURE 3 & 4
6. Align the hitch as desired and tighten all M10 fasteners to 35-40 ft-lbs, and the M12 fasteners to 55-60 ft-lbs.
7. Re-install the exhaust at this time.

CARE INSTRUCTIONS

- REGULAR WAXING IS RECOMMENDED. DO NOT USE ANY TYPE OF POLISH OR WAX THAT MAY CONTAIN ABRASIVES
- STAINLESS STEEL PRODUCTS CAN BE CLEANED WITH MILD SOAP AND WATER. STAINLESS STEEL POLISH SHOULD BE USED TO POLISH SMALL SCRATCHES.
- GLOSS BLACK FINISHES SHOULD BE CLEANED WITH MILD SOAP AND WATER



Westin Automotive Products, Inc.
320 Covina Blvd
San Dimas, Ca. 91773

Thank You for choosing Westin products
For Additional installation assistance please call
Customer service (800) 793-7846

www.westinautomotive.com

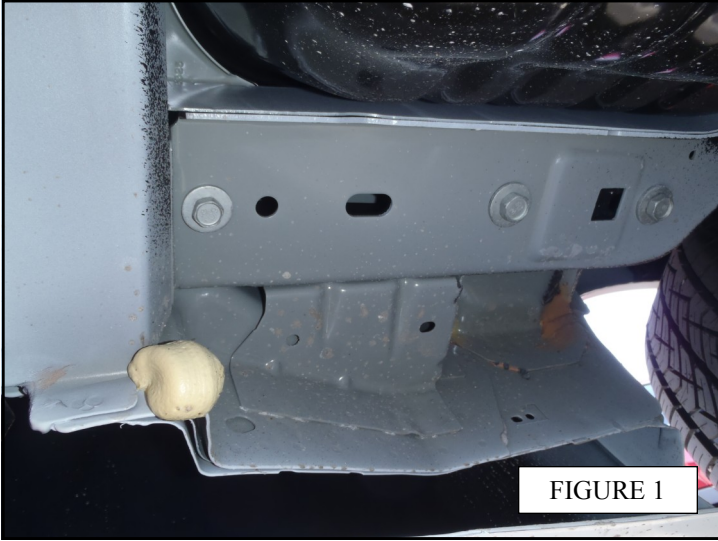


FIGURE 1

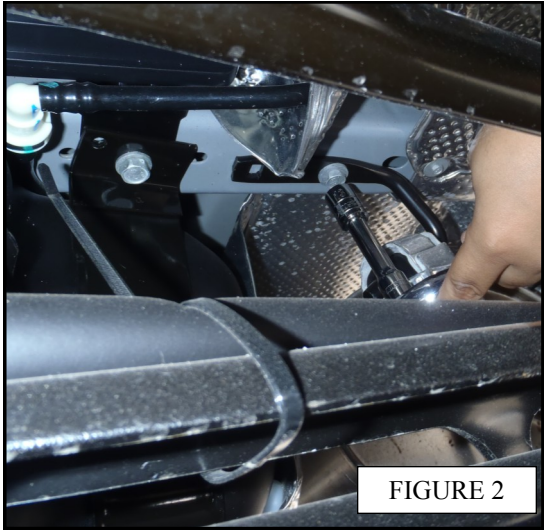


FIGURE 2

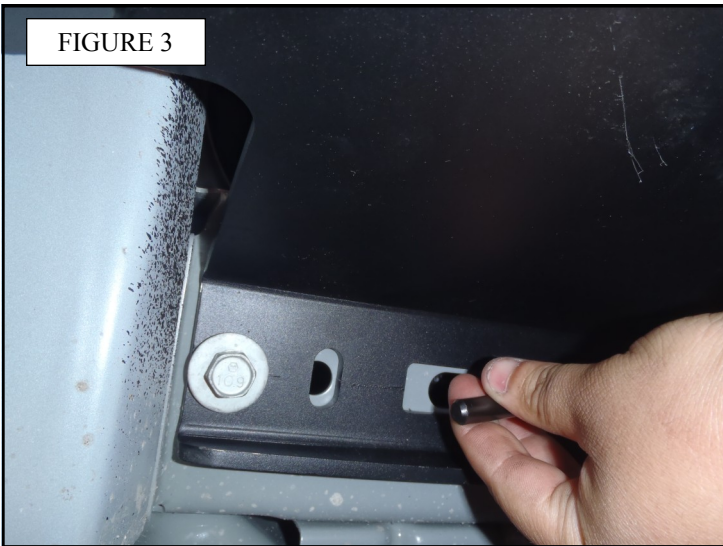
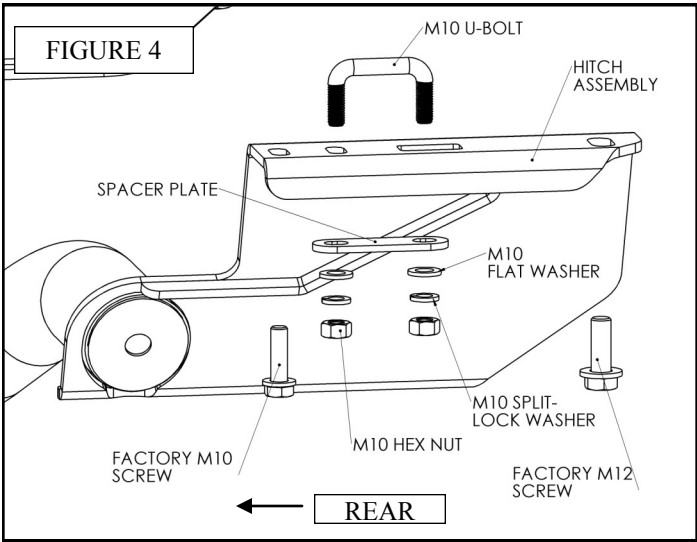


FIGURE 3



INSTALLATION COMPLETE



AUTOMOTIVE PRODUCTS, INC.
San Dimas, California

WARNINGS & NOTICES FOR THE INSTALLATION OF WESTIN TOWING PRODUCTS - CLASS III RECEIVER HITCH

NOTICE

Westin Receiver Hitches are designed to accommodate a 2" - square receiver draw bar rated for class III/IV towing. Closely follow all Westin Installation Instructions for the proper installation of product. Improper installation can result in death, serious injury, and/or product and vehicle damage. In the operation of these products, it is imperative to observe precautions for your personal safety and the safety of others.

WARNING

Failure to follow these instructions could lead to death, personal injury, and / or property damage.

FASTENERS:

All Westin supplied fasteners must be utilized and installed in accordance with the installation instructions and apply torque to the specifications as defined. **DOUBLE CHECK ALL FASTENERS BEFORE INITIAL USE, AND PERIODICALLY IN THE FUTURE TO ENSURE PROPER FUNCTION AND SAFETY.**

DRILLING:

Most Westin products do not require drilling for installation. If drilling is defined as required, use caution when drilling a vehicle. **FAILURE TO REVIEW AN AREA TO BE DRILLED MAY RESULT IN PERSONAL INJURY AND/OR INJURY TO OTHERS AS WELL AS VEHICLE DAMAGE.**

EYE PROTECTION:

ALWAYS WEAR SAFETY GLASSES OR GOGGLES DURING THE INSTALLATION PROCESS TO AVOID PERSONAL INJURY.

MAXIMUM TOWING/CARRYING CAPACITY:

The Westin Receiver Hitches will have a visible tow rating label affixed directly on the product. User should never exceed the vehicle manufacturers maximum tow and weight rating regardless of the capacity of the hitch. **FAILURE TO FOLLOW THESE GUIDELINES WILL VOID THE WESTIN WARRANTY AND MAY RESULT IN PERSONAL INJURY AND/OR INJURY TO OTHERS AS WELL AS VEHICLE DAMAGE.**



Westin Automotive Products, Inc.
320 Covina Blvd
San Dimas, Ca. 91773