



SIGNATURE OF QUALITY

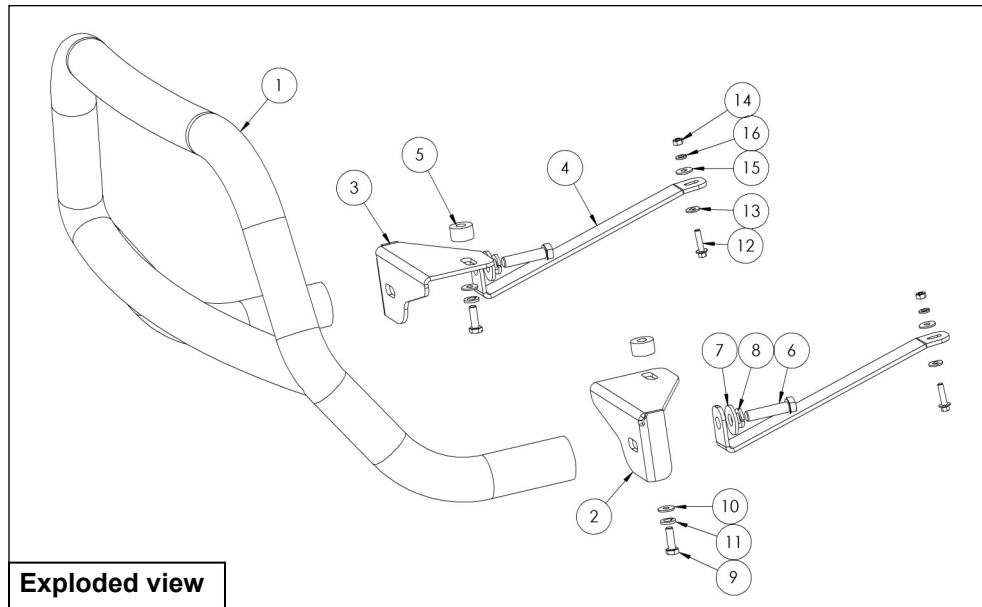
AUTOMOTIVE PRODUCTS, INC.

INSTRUCTIONS—INSTRUCCIONES—CONSIGNES

APPLICATION: 2014 TOYOTA HIGHLANDER
APP PART # 32-21190, 32-21195
CONTOUR LIGHT BAR

ITEM	QUANTITY	DESCRIPTION	TOOLS NEEDED
1	1	CONTOUR BAR	TORQUE WRENCH
2	1	MOUNTING BRACKET DRIVER SIDE	RATCHET
3	1	MOUNTING BRACKET PASSENGER SIDE	10MM SOCKET
4	2	MOUNTING BRACKET SUPPORT STRAPS	14MM SOCKET
5	2	MOUNTING BRACKET SPACERS	16MM SOCKET
6	2	M12 HEX HEAD CAP SCREWS	18MM WRENCH
7	2	M12 FLAT WASHERS	
8	2	M12 LOCK WASHERS	
9	2	M10 HEX HEAD CAP SCREWS	
10	2	M10 FLAT WASHERS	
11	2	M10 LOCK WASHERS	
12	2	M6 FLANGE BOLTS	
13	2	M6 BELLEVILLE SPRING LOCK WASHERS	
14	2	M6 HEX HEAD NUTS	
15	2	M6 FLAT WASHERS	
16	2	M6 SPLIT LOCK WASHERS	

ANTI-SEIZE LUBRICANT MUST BE USED ON ALL STAINLESS STEEL FASTENERS TO PREVENT THREAD DAMAGE AND GALLING



CARE INSTRUCTIONS

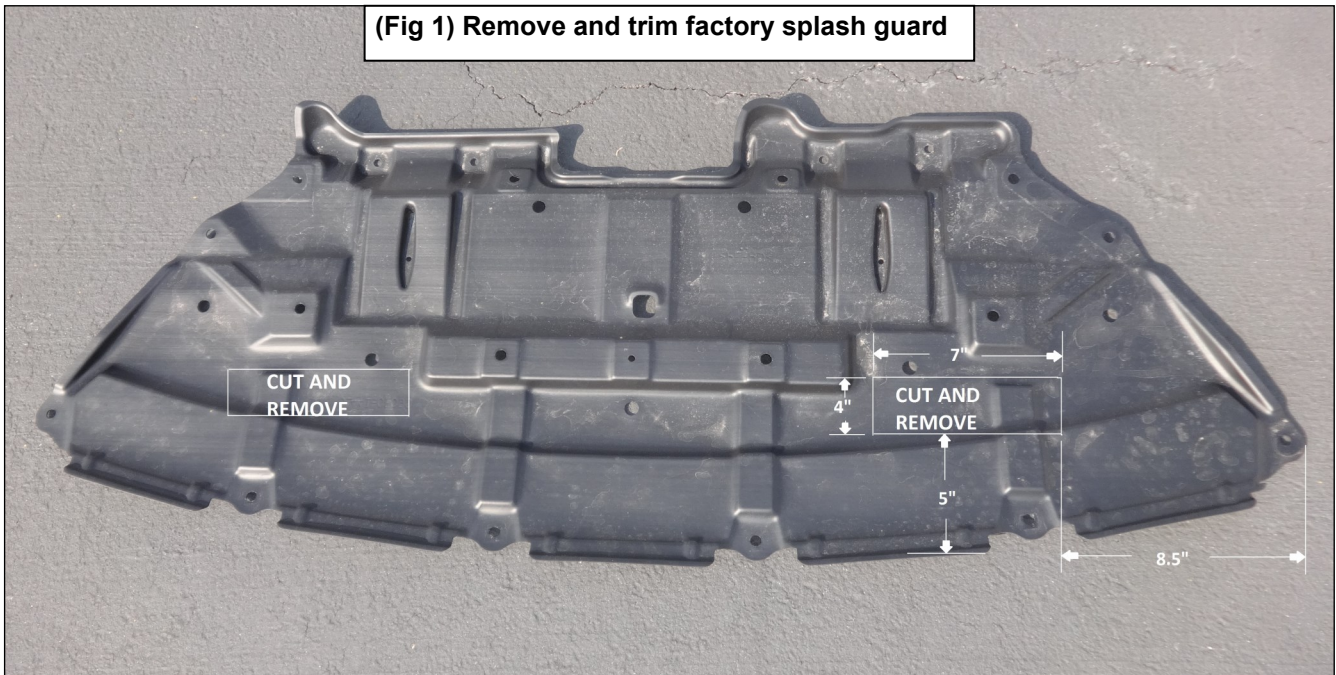
- REGULAR WAXING IS RECOMMENDED. DO NOT USE ANY TYPE OF POLISH OR WAX THAT MAY CONTAIN ABRASIVES.
- STAINLESS STEEL PRODUCTS CAN BE CLEANED WITH MILD SOAP AND WATER. STAINLESS STEEL POLISH SHOULD BE USED TO POLISH SMALL SCRATCHES.
- GLOSS BLACK FINISHES SHOULD BE CLEANED WITH MILD SOAP AND WATER.



Westin Automotive Products, Inc.
320 Covina Blvd
San Dimas, Ca. 91773

Thank You for choosing Westin products
For Additional installation assistance please call
Customer service (800) 793-7846

1. Remove contents from box, verify if all parts listed are present and free from damage. Carefully read and understand all instructions before attempting installation.
2. From underneath the front of the vehicle remove the plastic lower splash guard using the 10mm socket and set aside. *Note: To remove the splash guard there are also three push type fasteners and the shield will need to be bowed down in the middle in order to release it.* (fig 1)
3. Starting on the driver's side, remove the factory cap screw shown in (fig 2) using the 14mm socket. *Note: these screws will not be re-installed.*
4. Attach the driver's side mounting bracket (item 2) by placing the bracket spacer (item 5) between the bracket and the frame (fig 3). Attach the bracket using (1) M10 hex head cap screw (item 9), (1) M10 lock washer (item 11), and (1) M10 flat washer (item 10). *Do not fully tighten at this time.*
5. Follow steps 3 and 4 for the passenger side.
6. Re-attach lower splash guard and trim as necessary to fit around the mounting brackets. (fig 1) *Note: Do not install the two rear-most outer bolts, these holes will be used for mounting the support straps.*
7. Install the driver's side mounting bracket support strap (item 4) to the rear splash guard mounting hole using (1) M6 flange bolt (item 12), (1) M6 Belleville spring washer (serrated side toward bolt head) (item 13), (1) M6 hex nut (item 14), (1) M6 split lock washer (item 16) and (1) M6 flat washer (item 15). (fig 4) *Do not fully tighten at this time.*
8. Follow step 7 for the passenger side.
9. Loosely install the contour bar (item 1) to the mounting brackets and support strap with the M12 hex head cap screws (item 6), M12 lock washers (item 8), and M12 flat washers (item 7). (fig 5)
10. Level and adjust contour bar and tighten all hardware at this time. (fig 6)
11. Torque M12 hardware to 50-55ft-lbs, M10 hardware to 30-35ft-lbs, and M6 hardware to 10-15 ft-lbs.

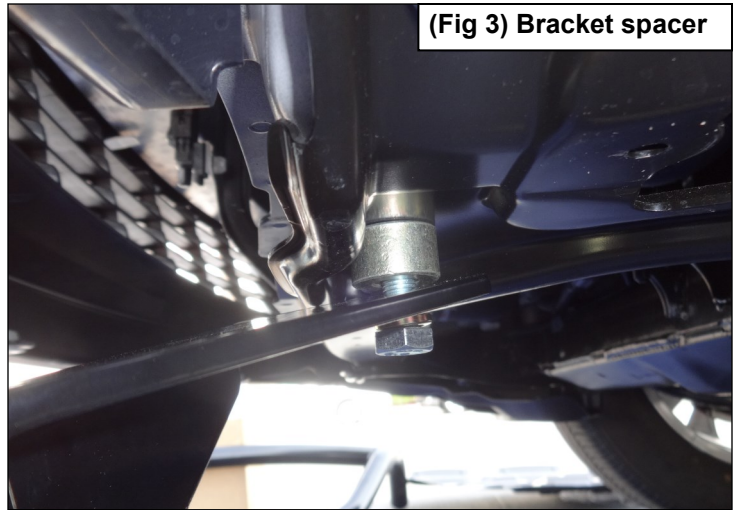


Westin Automotive Products, Inc.
320 Covina Blvd
San Dimas, Ca. 91773

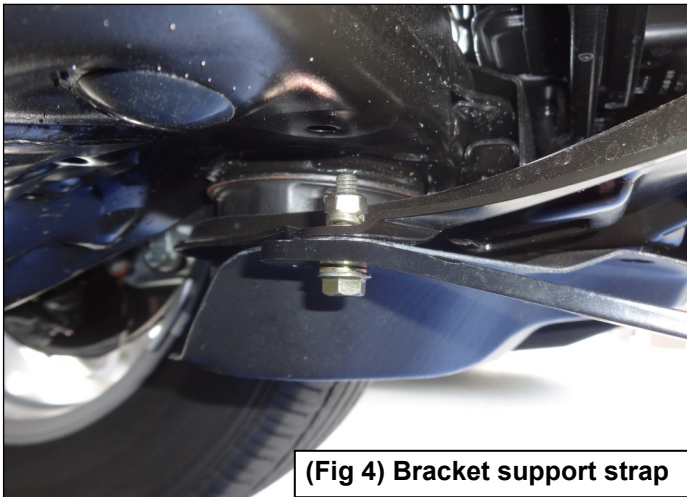
Thank You for choosing Westin products
For Additional installation assistance please call
Customer service (800) 793-7846
www.westinautomotive.com



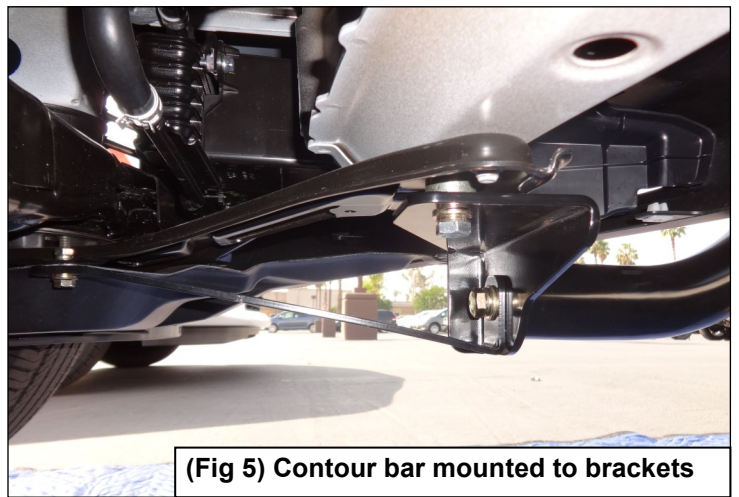
(Fig 2) Remove factory cap screw



(Fig 3) Bracket spacer



(Fig 4) Bracket support strap



(Fig 5) Contour bar mounted to brackets



(Fig 6) Contour bar installed



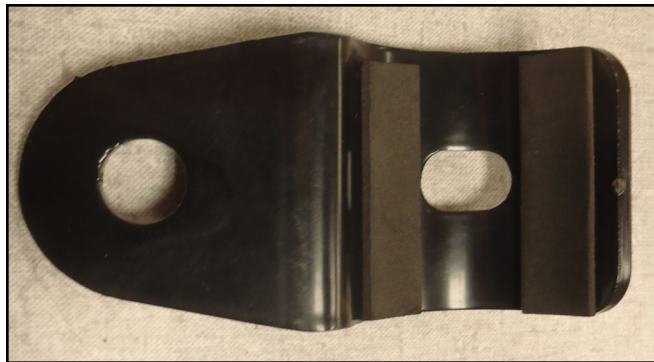
Westin Automotive Products, Inc.
320 Covina Blvd
San Dimas, Ca. 91773

Thank You for choosing Westin products
For Additional installation assistance please call
Customer service (800) 793-7846
www.westinautomotive.com

OPTIONAL LIGHT MOUNT TABS

ITEM	QUANTITY	DESCRIPTION	TOOLS NEEDED
17	2	LIGHT MOUNT BRACKET TABS	HEX KEY TOOL (INCLUDED)
18	2	M10 BUTTON HEAD STAINLESS STEEL CAP SCREWS	
19	2	M10 TOOTHED LOCK WASHERS	
20	2	M10 FLAT WASHERS	
21	1	ADHESIVE FOAM TAPE	

1. Remove contents from box, verify if all parts listed are present and free from damage. Carefully read and understand all instructions before attempting installation.
2. Apply foam tape (item 21) to front and back of the tab facing where it mounts to the tube. (fig 7)
3. Using the supplied hex key tool, button head cap screws (item 18), lock washers (item 19), and flat washers (item 20), attach the bracket tabs (item 17) to the threaded inserts in the bottom of the cross tube. (fig 8)



(Fig 7) Foam tape applied to light tab



(Fig 8) Light tab installed on bar



Westin Automotive Products, Inc.
320 Covina Blvd
San Dimas, Ca. 91773

Thank You for choosing Westin products
For Additional installation assistance please call
Customer service (800) 793-7846
www.westinautomotive.com