



SIGNATURE OF QUALITY

AUTOMOTIVE PRODUCTS, INC.

INSTRUCTIONS—INSTRUCCIONES—CONSIGNES

CLASS 1 RECEIVER HITCH
APPLICATION: 2014 – PLUS NISSAN ROGUE
APP PART # 65-1425

ITEM	QUANTITY	DESCRIPTION	TOOLS NEEDED
1	1	MAIN RECEIVER HITCH ASSEMBLY	18MM SOCKET
2	1	DRIVER SIDE MOUNTING BRACKET	16MM SOCKET
3	1	PASSENGER SIDE MOUNTING BRACKET	FLAT SCREW DRIVER
4	7	M12 CAP SCREW	PHILPS SCREW DRIVER
5	7	M12 BELLEVILLE WASHER	RACHET
6	8	M10 CAP SCREW	
7	8	M10 SPLIT LOCK WASHER	
8	8	M10 FLAT WASHER	

ANTI-SEIZE LUBRICANT MUST BE USED ON ALL STAINLESS STEEL FASTENERS TO PREVENT THREAD DAMAGE AND GALLING

1. Remove contents from box, verify if all parts listed are present and free from damage. Carefully read and understand all instructions before attempting installation.
2. Start at the rear underside of the vehicle, and remove at the far end of driver and passenger sides the splash shields. By removing the plastic fasteners at the rear end and the screw towards the front.

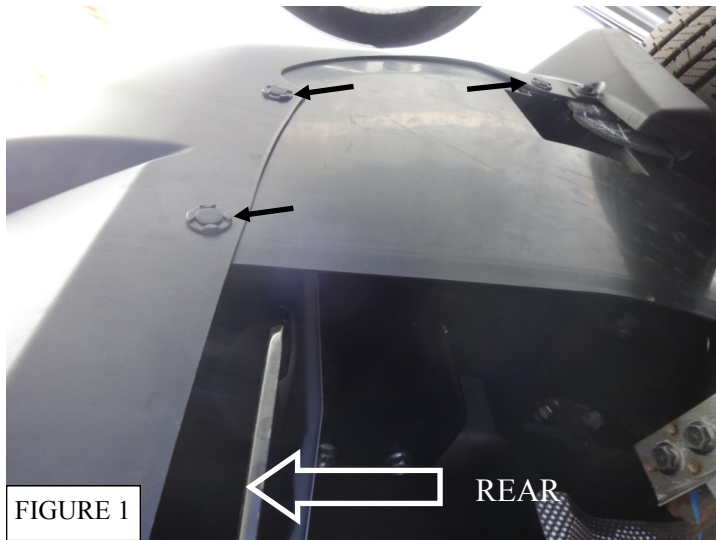


FIGURE 1

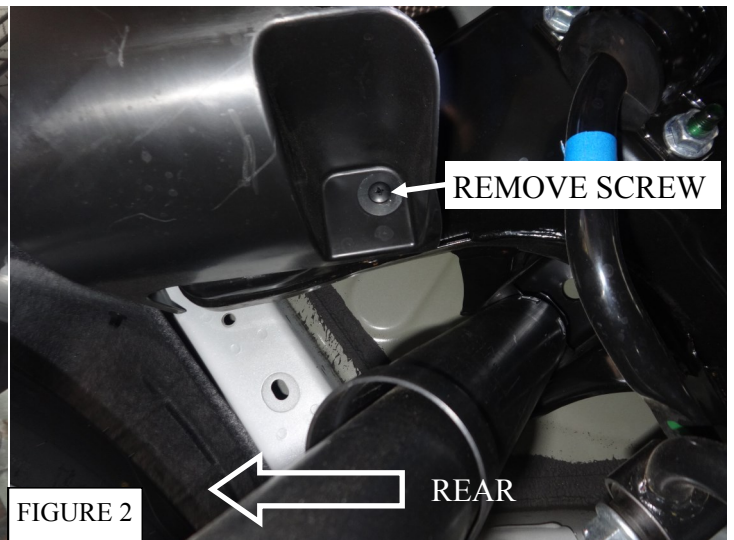


FIGURE 2

CARE INSTRUCTIONS

- REGULAR WAXING IS RECOMMENDED. DO NOT USE ANY TYPE OF POLISH OR WAX THAT MAY CONTAIN ABRASIVES.
- STAINLESS STEEL PRODUCTS CAN BE CLEANED WITH MILD SOAP AND WATER. STAINLESS STEEL POLISH SHOULD BE USED TO POLISH SMALL SCRATCHES.
- GLOSS BLACK FINISHES SHOULD BE CLEANED WITH MILD SOAP AND WATER.



Westin Automotive Products, Inc.
320 Covina Blvd
San Dimas, Ca. 91773

Thank You for choosing Westin products
For Additional installation assistance please call
Customer service (800) 793-7846
www.westinautomotive.com

3. Remove the original tow loop from the unibody channel. This will be replaced after product is installed. Figure 3.
4. Refer to the fastener detail illustration for the fasteners at the beginning of page three. Figure 6. First, loosely attach the driver and passenger side mounting brackets to the vehicle unibody channel using the supplied M12 cap screws, split lock washers, and flat washers. Do not fully tighten at this time.
5. With the mounting brackets loose, attach the main hitch assembly to each mounting bracket using the supplied M10 cap screws, M10 split lock washers, and M10 flat washers. Do not fully tighten at this time.
6. Adjust all components as desired. Tighten M12 fasteners to 65-70 lb-ft & M10 fasteners to 35-40 lb-ft.
7. Reinstall the splash shields to the vehicle using the previously removed factory fasteners.



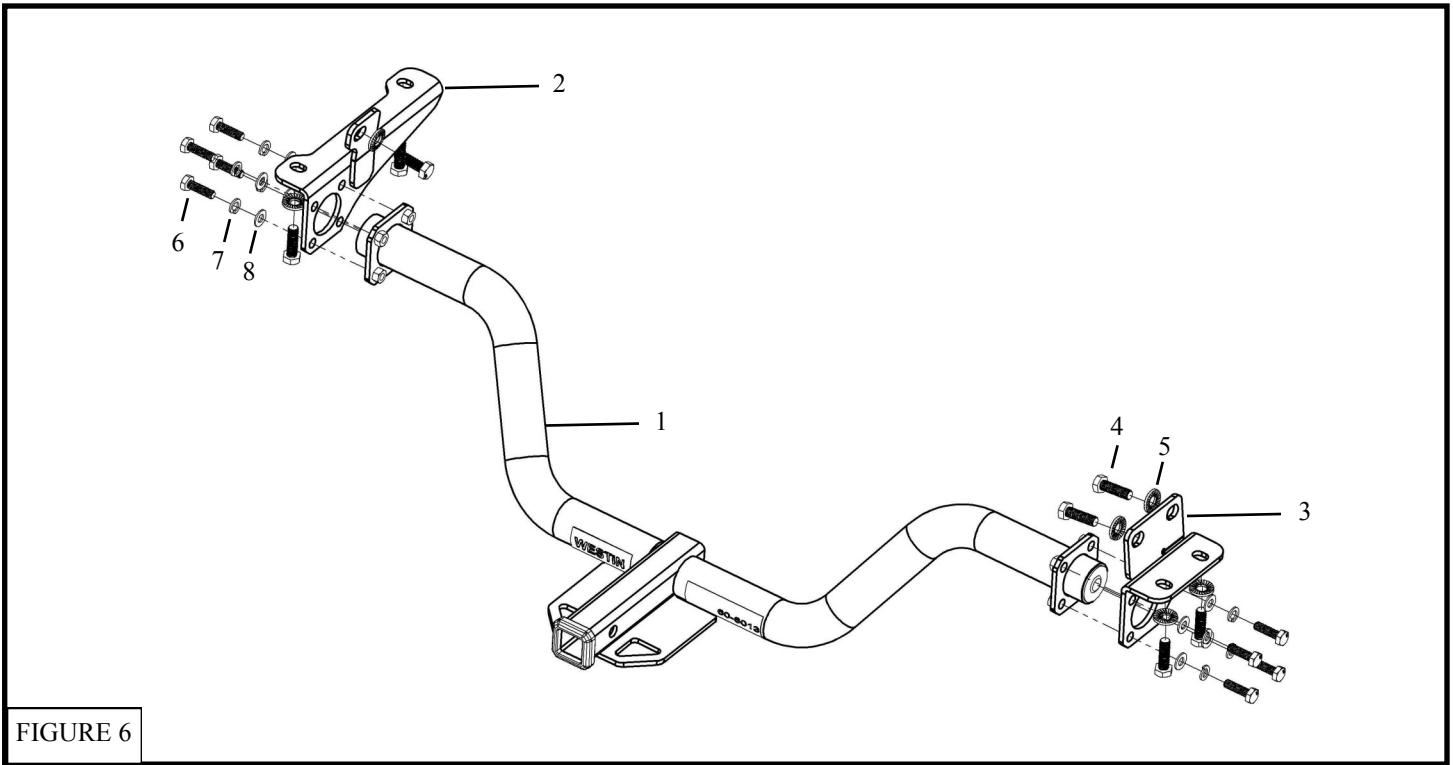


FIGURE 6

