

# INSTALLATION INSTRUCTIONS



## XTS ROCK SLIDER

### APPLICATION:

2021-2023 Ford Bronco 4dr (Excl. Bronco Sport)

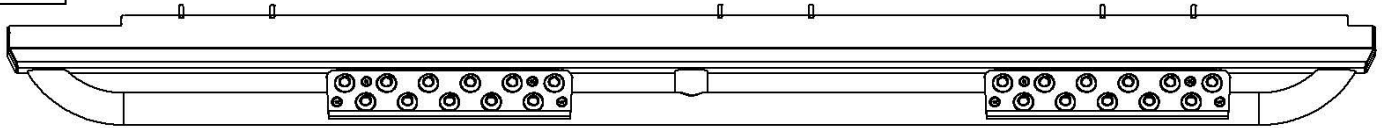
### PART NUMBER:

42-14195

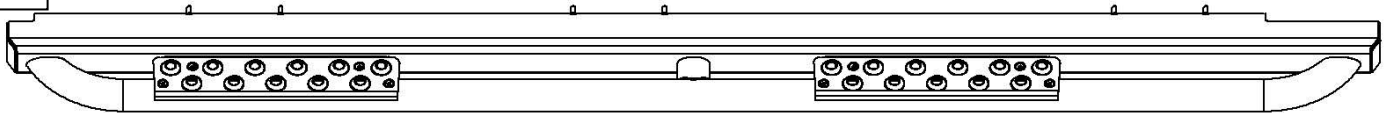
CONTENT			
ITEM	QUANTITY	DESCRIPTION	TOOLS NEEDED
1	1	DRIVER XTS ROCK SLIDER	15MM SOCKET
2	1	PASSENGER XTS ROCK SLIDER	15MM WRENCH
3	1	FRONT DRIVER MOUNTING BRACKET	10MM SOCKET
4	1	FRONT PASSENEGER MOUNTING BRACKET	10MM WRENCH
5	1	CENTER DRIVER MOUNTING BRACKET	RATCHET
6	1	CENTER PASSENGER MOUNTING BRACKET	TORQUE WRENCH
7	1	REAR DRIVER MOUNTING BRACKET	
8	1	REAR PASSENGER MOUNTING BRACKET	
9	18	M10 HEX HEAD CAP SCREW	
10	18	M10 FLAT WASHER	
11	18	M10 SPLIT LOCK WASHER	
12	12	M6 FLAT WASHER	
13	12	M6 HEX NUT	
14	12	M6 SPLIT LOCK WASHER	

**ANTI-SEIZE LUBRICANT MUST BE USED ON ALL STAINLESS STEEL FASTENERS TO PREVENT THREAD DAMAGE AND GALLING**

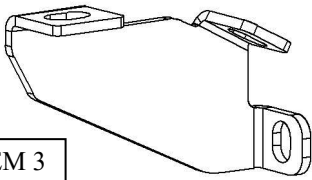
ITEM 1



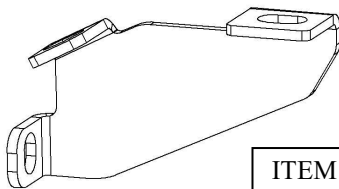
ITEM 2



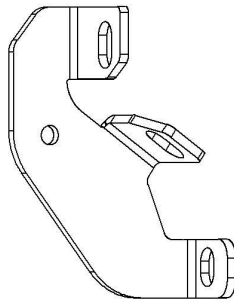
ITEM 3



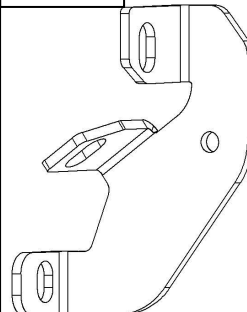
ITEM 4



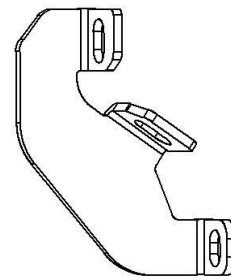
ITEM 5



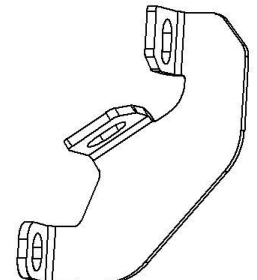
ITEM 6



ITEM 7

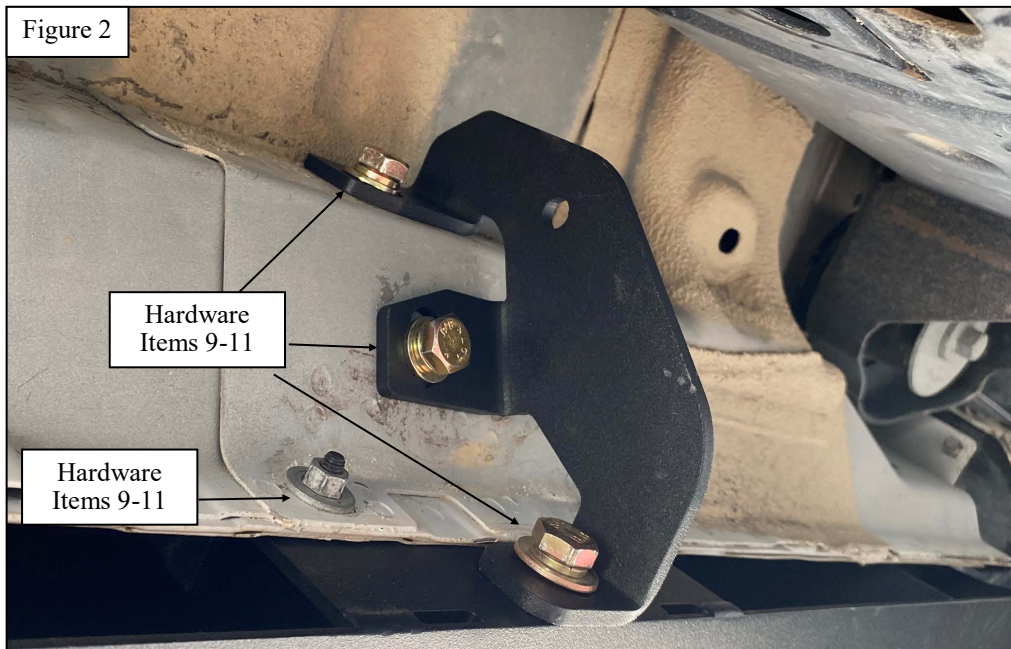
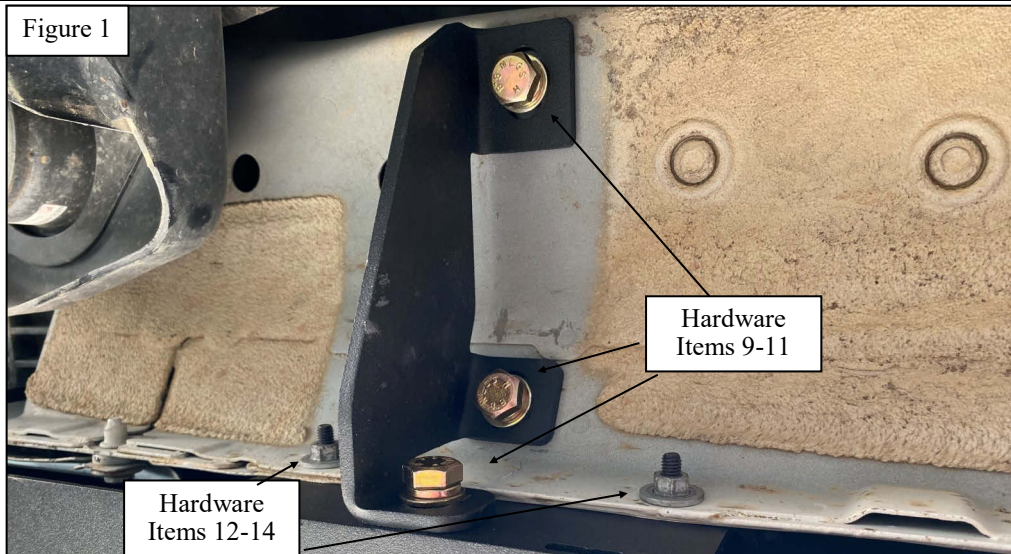


ITEM 8



## PROCEDURE

1. Remove contents from box, verify if all parts listed are present and free from damage.  
Carefully read and understand all instructions before attempting installation.  
**Failure to identify damage before installation could lead to a rejection of any claim.**
2. Starting on the driver side, locate the Front, Center, and Rear Driver Brackets (**Items 3, 5, & 7**)
3. Using the Supplied M10 hardware (**Items 9-11**) loosely secure the Front, Center, and Rear Driver Brackets. See **Figure 1 & 2** for reference. **Note:** *The installation process for the Center and Rear Driver Brackets are the same. See **Figures 3 & 4** for bracket orientation.*
4. Locate the Driver XTS Rock Slider (**Item 1**) and carefully direct the welded bolts through the pinch weld.
5. Using the supplied M6 hardware (**Item 12-14**) and M10 hardware (**Items 9-11**) loosely secure it onto the previously installed brackets. See **Figures 1 & 2** for reference.
6. Repeat **Steps 2-5** for the passenger side.
7. Align running boards and brackets to desired positioning then torque and tighten all M10 hardware to 35 ft-lbs and M8 Hardware to 16 ft-lbs.

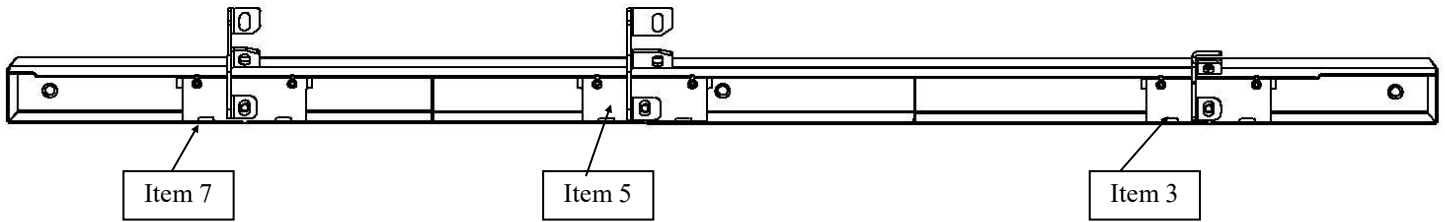




Driver Side Shown

FRONT →

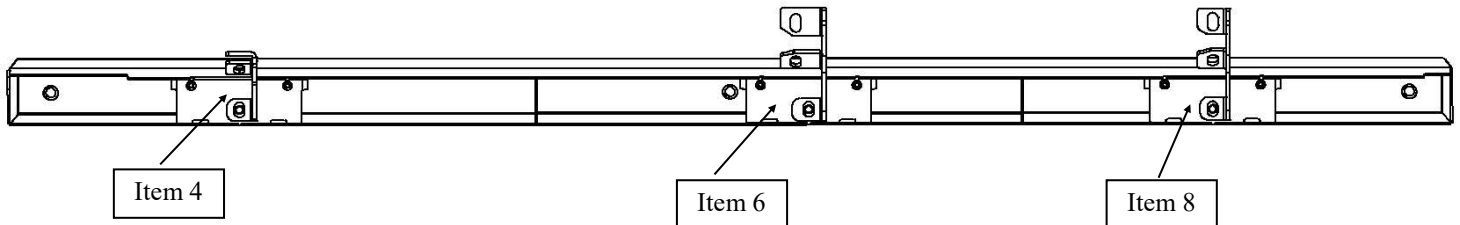
Figure 3



Passenger Side Shown

← FRONT

Figure 4



### INSTALLATION COMPLETE



#### CARE INSTRUCTIONS

- REGULAR WAXING IS RECOMMENDED. DO NOT USE ANY TYPE OF POLISH OR WAX THAT MAY CONTAIN ABRASIVES.
- STAINLESS STEEL PRODUCTS CAN BE CLEANED WITH MILD SOAP AND WATER. STAINLESS STEEL POLISH SHOULD BE USED TO POLISH SMALL SCRATCHES.
- GLOSS BLACK FINISHES SHOULD BE CLEANED WITH MILD SOAP AND WATER.

**WESTIN** Westin Automotive Products, Inc.  
 320 W. Covina Blvd  
 San Dimas, Ca. 91773

Thank you for choosing Westin products  
 for additional installation assistance please call  
 Customer Service (800) 793-7846  
[www.westinautomotive.com](http://www.westinautomotive.com)



## WARNING



Failure to follow these instructions could lead to death, personal injury, and / or property damage.

Failure to follow these instructions could lead to death, personal injury, and / or property damage.

### FASTENERS:

All Westin supplied fasteners must be utilized and installed in accordance with the installation instructions and apply torque to the specifications as defined. **DOUBLE CHECK ALL FASTENERS BEFORE INITIAL USE, AND PERIODICALLY IN THE FUTURE TO ENSURE PROPER FUNCTION AND SAFETY.**

### DRILLING:

Most Westin products do not require drilling for installation. If drilling is defined as required, use caution when drilling a vehicle. **FAILURE TO REVIEW AN AREA TO BE DRILLED MAY RESULT IN PERSONAL INJURY AND/OR INJURY TO OTHERS AS WELL AS VEHICLE DAMAGE.**

### EYE PROTECTION:

**ALWAYS WEAR SAFETY GLASSES OR GOGGLES DURING THE INSTALLATION PROCESS TO AVOID PERSONAL INJURY.**

### MAXIMUM TOWING/CARRYING CAPACITY: (if applicable)

The Westin Receiver Hitches will have a visible tow rating label affixed directly on the product. User should never exceed the vehicle manufacturers maximum tow and weight rating regardless of the capacity of the hitch. **FAILURE TO FOLLOW THESE GUIDELINES WILL VOID THE WESTIN WARRANTY AND MAY RESULT IN PERSONAL INJURY AND/OR INJURY TO OTHERS AS WELL AS VEHICLE DAMAGE.**

### FOR CALIFORNIA RESIDENTS ONLY-PROP 65 WARNING:

Some products may contain chemicals such as DEHP, which can cause cancer, birth defects or other reproductive harm. For more info go to [www.p65warnings.ca.gov](http://www.p65warnings.ca.gov)



Westin Automotive Products, Inc.  
320 W. Covina Blvd  
San Dimas, Ca. 91773