

# INSTALLATION INSTRUCTIONS

## MUFFLER SKID PLATE



### APPLICATION:

Jeep Wrangler 2007-2018 (Excl. JL)

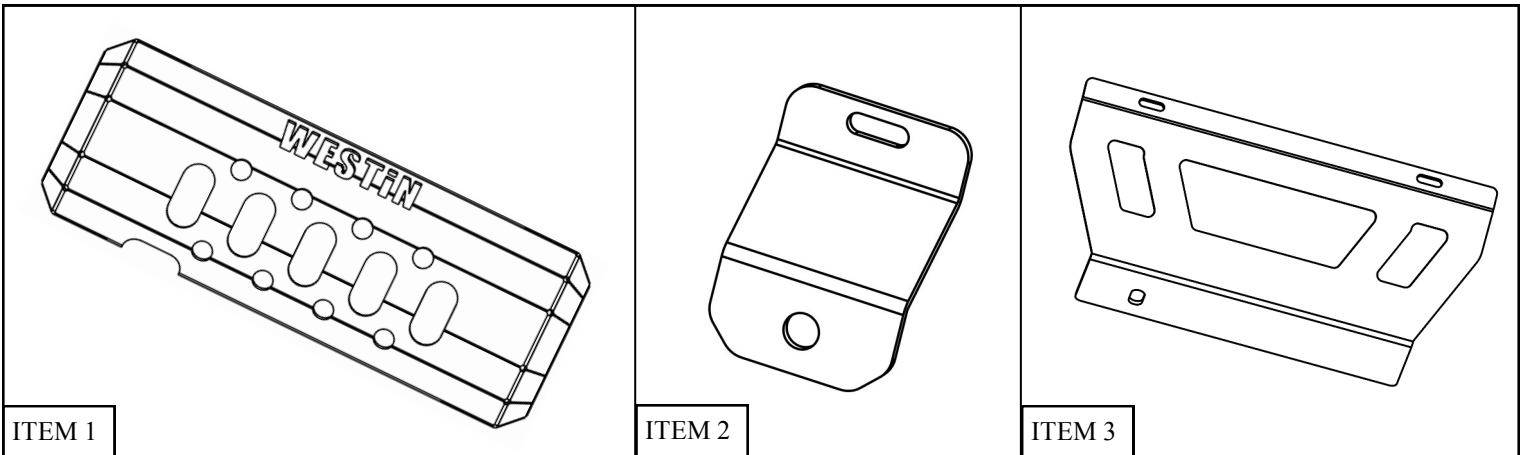
Jeep Wrangler Unlimited 2007-2018 (Excl. JL)

### PART NUMBER:

42-21045

CONTENT			
ITEM	QUANTITY	DESCRIPTION	TOOLS NEEDED
1	1	Muffler Skid Plate	18mm Socket
2	2	Rear Brackets	Ratchet
3	1	Front Bracket	Torque Wrench
4	1	M12 Bolt Plate	13mm Socket
5	4	M8 Plastic Retainer Square	
6	4	M8 Split Lock Washer	
7	4	M8 Flat Washer	
8	4	M8 Hex Nut	
9	4	M8 Carriage Bolt	
10	1	M12 Hex Nut	
11	1	M12 Split Lock Washer	
12	1	M12 Flat Washer	

**ANTI-SEIZE LUBRICANT MUST BE USED ON ALL STAINLESS STEEL FASTENERS TO PREVENT THREAD DAMAGE AND GALLING**

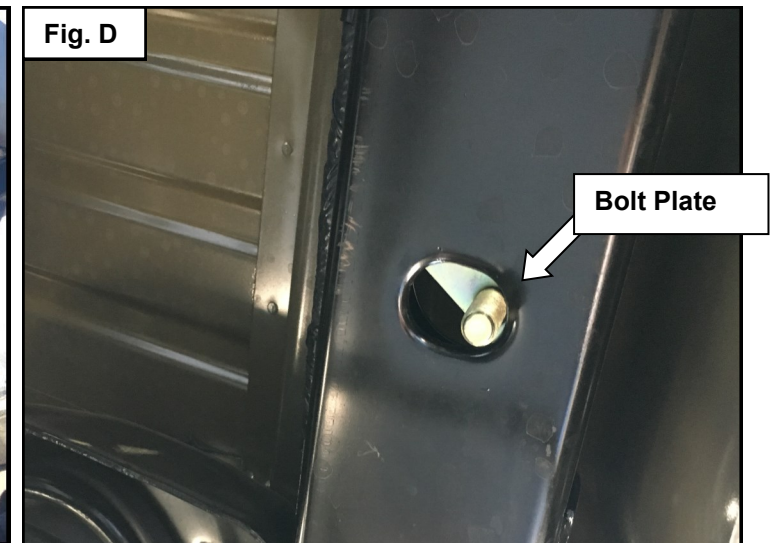
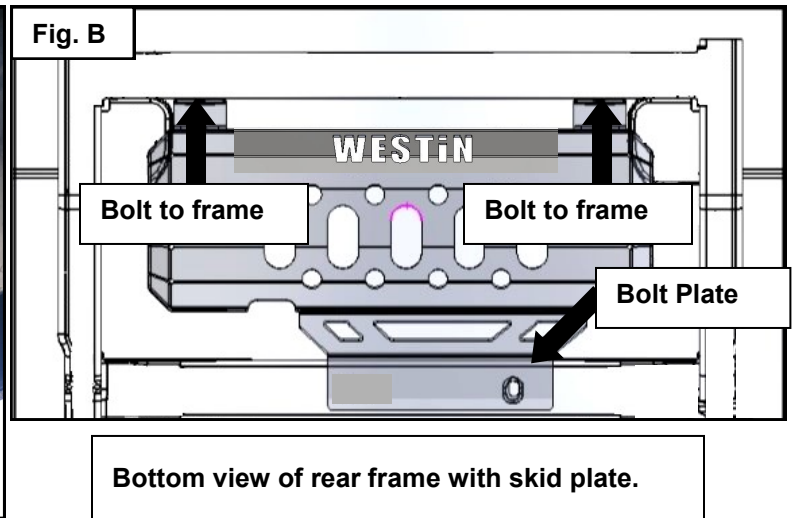
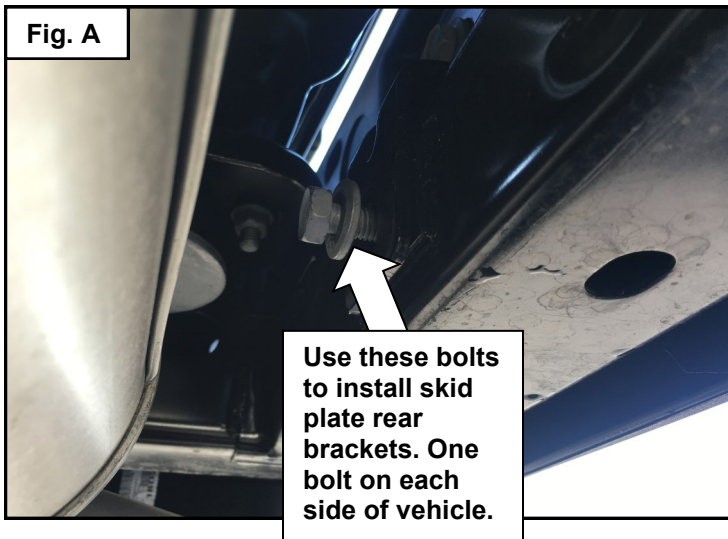


Westin Automotive Products, Inc.  
320 W. Covina Blvd  
San Dimas, Ca. 91773

## PROCEDURE

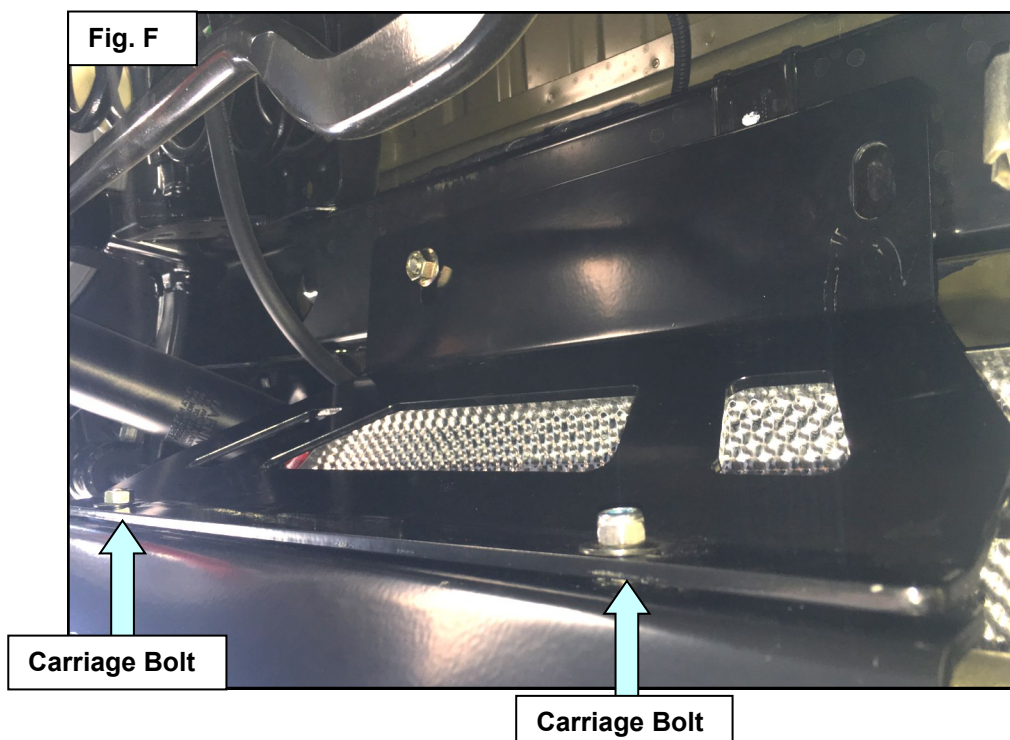
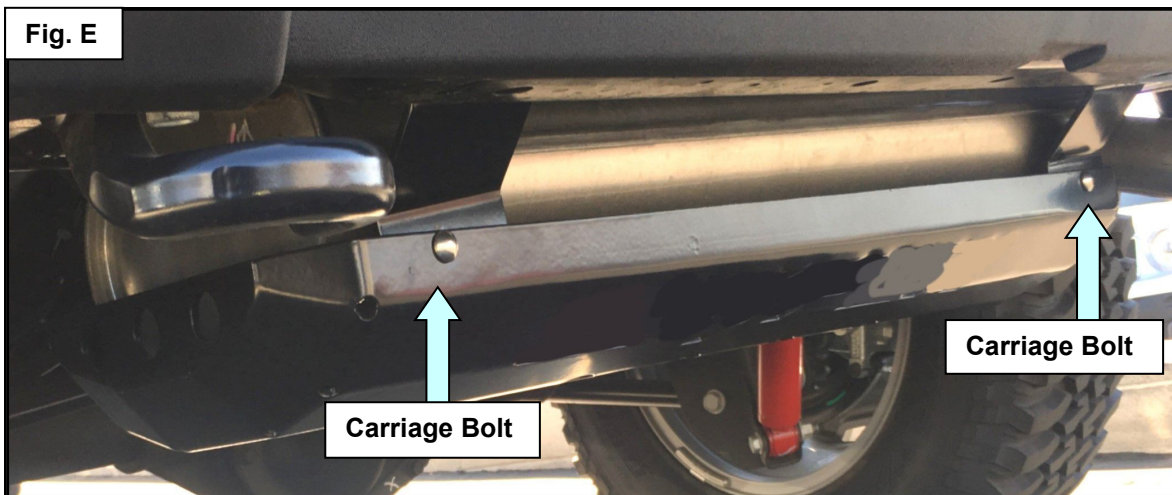
1. Remove contents from box, verify if all parts listed are present and free from damage.  
Carefully read and understand all instructions before attempting installation.  
(This skid plate can be installed by one person but it is highly recommended to have assistance of a second person.)  
**Failure to identify damage before installation could lead to a rejection of any claim.**

2. Locate M8 bolts on frame of vehicle and remove. These bolts are located towards the back of the vehicle behind the stock muffler. These bolts will be used to mount the rear brackets. See **Figures A & B** for reference.



3. Insert supplied M12 bolt plate (4) and loosely install the front bracket using the supplied M12 hardware (10-12) as shown on **Figures B & D**.
4. Loosely install the rear brackets using the hardware removed in **Step 2**. See **Figures A & B**.

5. Install M8 carriage bolts (9) and leave loose. See **Figures E & F**.

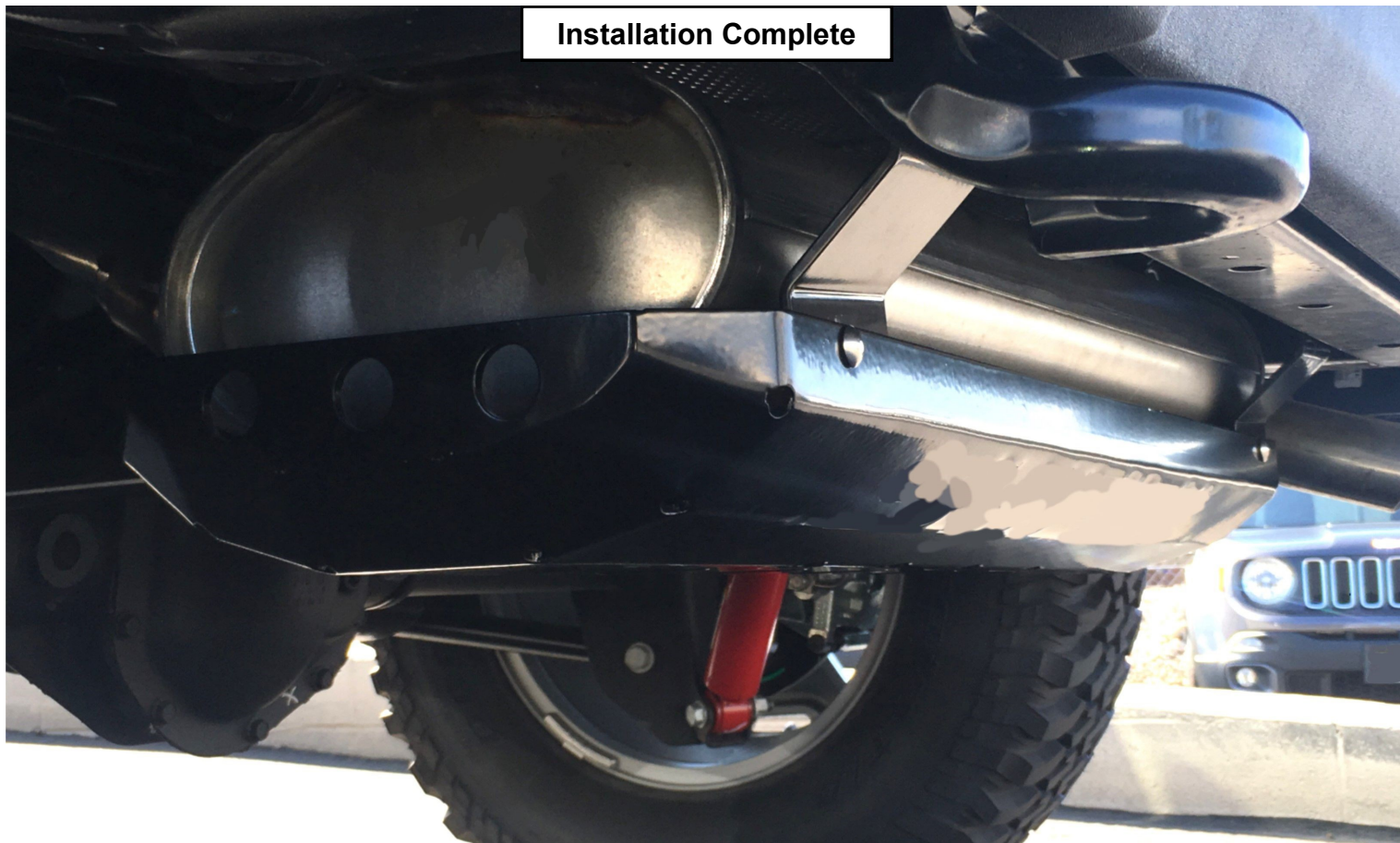


6. Tighten all hardware to the following specifications: M8 hardware to 15-18 ft-lbs and M12 hardware to 50-55 ft-lbs.

#### CARE INSTRUCTIONS

- REGULAR WAXING IS RECOMMENDED. DO NOT USE ANY TYPE OF POLISH OR WAX THAT MAY CONTAIN ABRASIVES.
- STAINLESS STEEL PRODUCTS CAN BE CLEANED WITH MILD SOAP AND WATER. STAINLESS STEEL POLISH SHOULD BE USED TO POLISH SMALL SCRATCHES.
- GLOSS BLACK FINISHES SHOULD BE CLEANED WITH MILD SOAP AND WATER.

Installation Complete



**WESTIN**

Westin Automotive Products, Inc.  
320 W. Covina Blvd  
San Dimas, Ca. 91773

P.N.: 75-422104-RevC

ECO #: W18-0044

4

Thank you for choosing Westin products  
for additional installation assistance please call  
Customer Service (800) 793-7846  
[www.westinautomotive.com](http://www.westinautomotive.com)

DATE: 05/15/2018



## WARNING



Failure to follow these instructions could lead to death, personal injury, and / or property damage.

Failure to follow these instructions could lead to death, personal injury, and / or property damage.

### FASTENERS:

All Westin supplied fasteners must be utilized and installed in accordance with the installation instructions and apply torque to the specifications as defined. **DOUBLE CHECK ALL FASTENERS BEFORE INITIAL USE, AND PERIODICALLY IN THE FUTURE TO ENSURE PROPER FUNCTION AND SAFETY.**

### DRILLING:

Most Westin products do not require drilling for installation. If drilling is defined as required, use caution when drilling a vehicle. **FAILURE TO REVIEW AN AREA TO BE DRILLED MAY RESULT IN PERSONAL INJURY AND/OR INJURY TO OTHERS AS WELL AS VEHICLE DAMAGE.**

### EYE PROTECTION:

**ALWAYS WEAR SAFETY GLASSES OR GOGGLES DURING THE INSTALLATION PROCESS TO AVOID PERSONAL INJURY.**

### MAXIMUM TOWING/CARRYING CAPACITY:

The Westin Receiver Hitches will have a visible tow rating label affixed directly on the product. User should never exceed the vehicle manufacturers maximum tow and weight rating regardless of the capacity of the hitch. **FAILURE TO FOLLOW THESE GUIDELINES WILL VOID THE WESTIN WARRANTY AND MAY RESULT IN PERSONAL INJURY AND/OR INJURY TO OTHERS AS WELL AS VEHICLE DAMAGE.**



Westin Automotive Products, Inc.  
320 W. Covina Blvd  
San Dimas, Ca. 91773

Thank you for choosing Westin products  
for additional installation assistance please call  
Customer Service (800) 793-7846  
[www.westinautomotive.com](http://www.westinautomotive.com)