



INSTALLATION INSTRUCTIONS

MAX WINCH TRAY & HDX WINCH MOUNT GRILLE GUARD

APPLICATION:
CHEVROLET SUBURBAN/TAHOE 2021 –2025
PART NUMBER:
WINCH TRAY KIT: 46-24045
GRILL GUARD KIT: 57-94045A

COMPLETE KIT: 57-94045

NOTE: THIS PRODUCT WILL NOT WORK WITH PARKING SENSORS

CONTENT

ITEM	QUANTITY	DESCRIPTION	TOOLS NEEDED
1	1	MAX WINCH TRAY	UTILITY KNIFE
2	1	DRIVER TRAY BRACKET	SCREWDRIVER
3	1	PASSENGER TRAY BRACKET	18MM WRENCH
4	2	SUPPORT PLATE	18MM SOCKET
5	2	SPACER PLATE	15MM WRENCH
6	4	49MM FLAT WASHER	15MM SOCKET
7	4	58MM FLAT WASHER	10MM SOCKET
8	6	M12 HEX HEAD BOLT	7MM SOCKET
9	6	M12 FLAT WASHER	T15 TORX BIT
10	6	M12 LOCK WASHER	8 MM ALLEN WRENCH
11	2	SHORT M10 HEX HEAD BOLT	6 MM ALLEN WRENCH
12	2	M10 HEX NUT	RATCHET
13	6	M10 FLAT WASHER	RATCHET EXT.
14	4	M10 LOCK WASHER	TORQUE WRENCH
15	16	M12 BUTTON HEAD BOLT	HAMMER
16	14	M12 SERRATED FLANGE NUT	
17	16	M12 BELLVILLE WASHER	
18	2	LONG M10 HEX HEAD BOLT	

Winch Mount Grille Guard Hardware:

19	1	GRILLE GUARD	
20	1	DRIVER STRAP	
21	1	PASSENGER STRAP	
22	2	M10 BUTTON HEAD BOLT	
23	2	M10 BELLVILLE WASHER	
24	2	M10 SERRATED FLANGE NUT	
25	1	DRIVER TEMPLATE—2021-2023 ===== MUST BE USED FOR INSTALLATION =====	
26	1	PASSENGER TEMPLATE—2021-2023 ===== MUST BE USED FOR INSTALLATION =====	

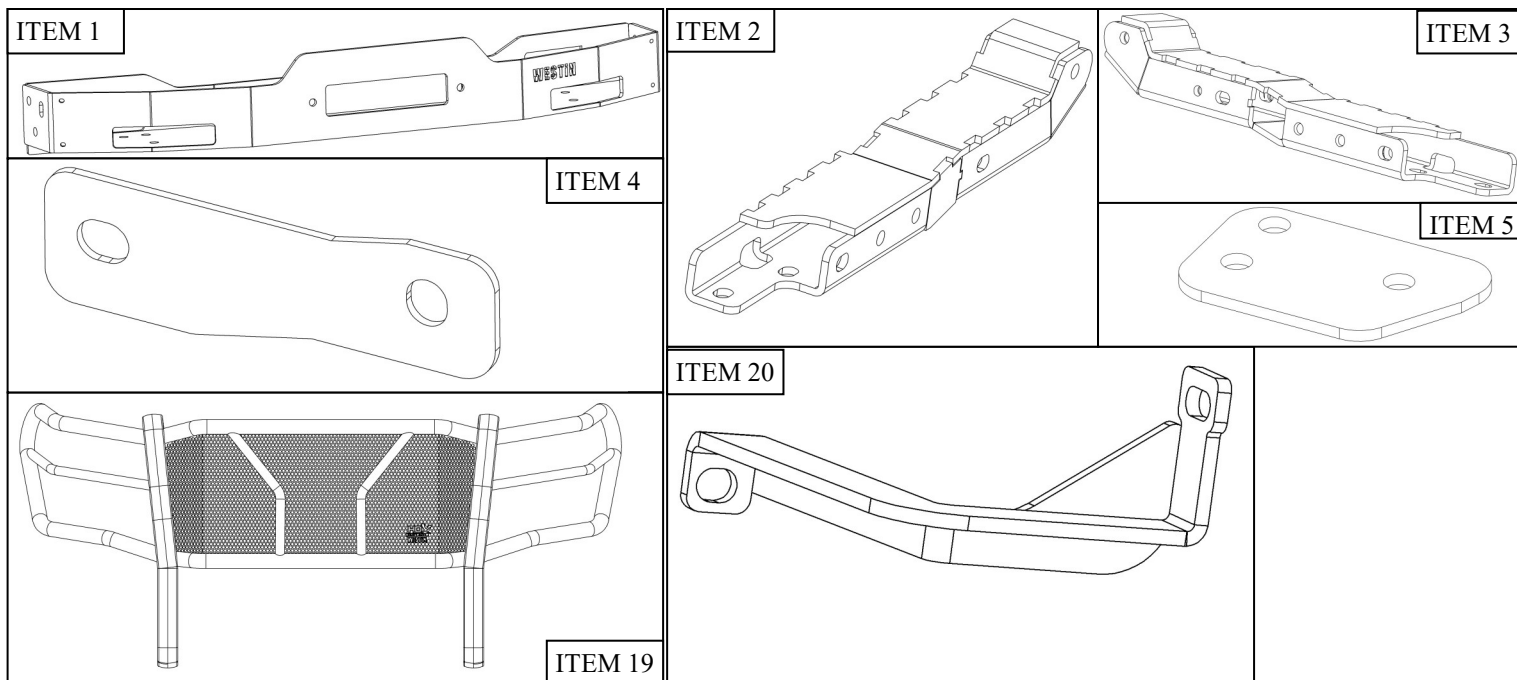
ANTI-SEIZE LUBRICANT MUST BE USED ON ALL STAINLESS STEEL FASTENERS TO PREVENT THREAD DAMAGE AND GALLING



Westin Automotive Products, Inc.
320 W. Covina Blvd
San Dimas, Ca. 91773

Thank you for choosing Westin products
for additional installation assistance please call
Customer Service (800) 793-7846
www.westinautomotive.com

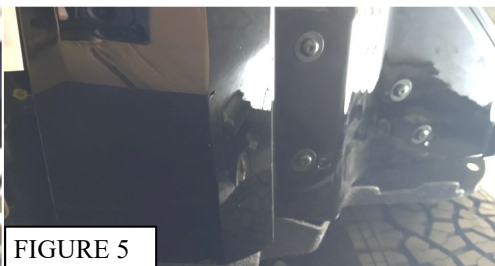
DATE: 05/16/2025



PROCEDURE

1. Remove contents from box, verify if all parts listed are present and free from damage.
Carefully read and understand all instructions before attempting installation.
Failure to identify damage before installation could lead to a rejection of any claim.
2. Follow the next steps to remove the entire front grille and fascia from the front of the vehicle. There are a number of plastic fasteners and metal screws holding it on. Care should be taken not to damage the fascia as it is removed.
3. Open the hood and remove the 9 plastic rivets and the two screws with the plastic hood release handle (**Figure 1**) and remove the top plastic cover, then remove the screws holding the grill (**Figure 2**).
4. Remove screws located under the fenders that holds the front fascia (**Figure 3**). Carefully pull the fender trim. Remove all the screws under the vehicle to loosen the bottom part of the fascia. (**Figures 4 & 5**)
5. Remove screw under each side of the fenders. (**Figures 6 & 7**).

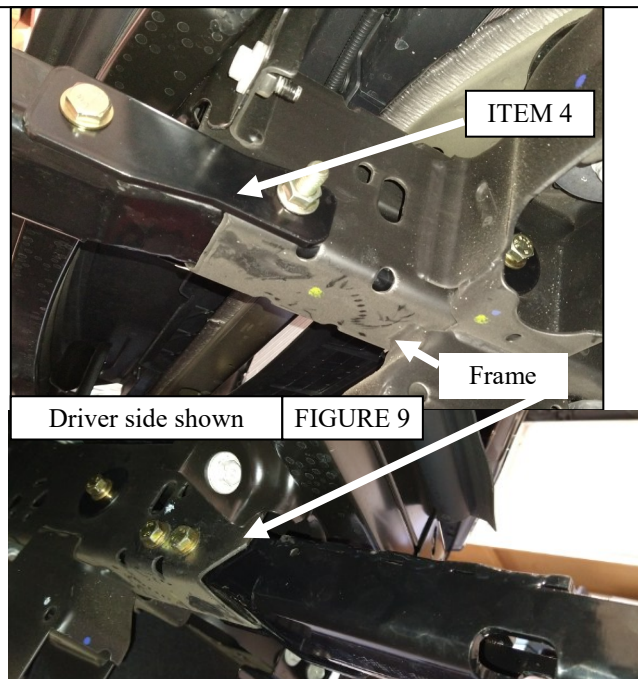
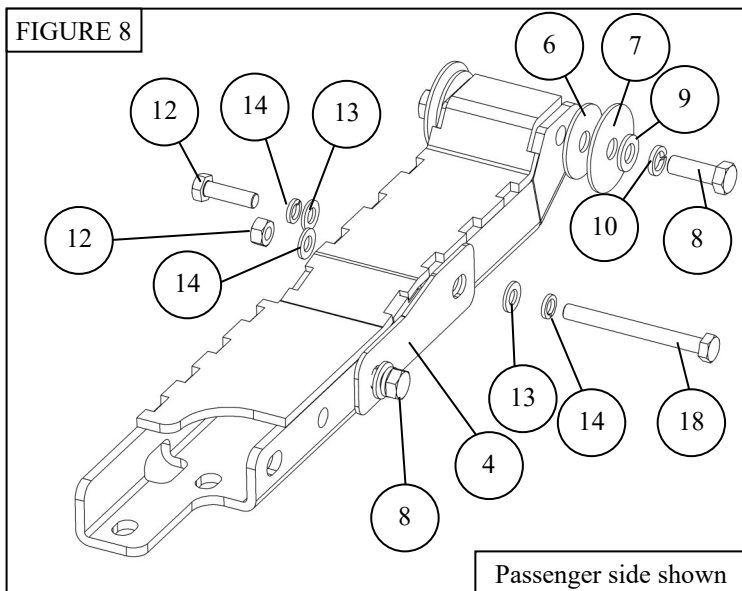




6. With help disconnect any connection from the fascia to the vehicle and carefully disengage the whole front fascia.
7. Pull the plastic cover on top of the internal bumper and from radiator support and discard it.
8. If equipped with tow hooks remove them. Tow hooks will not be reused.

9. Install driver (2) and passenger (3) tray brackets and support plate (4) to the chassis using supplied M10 and M12 hardware. **Note: The smaller washer will be used in between the frame and tray bracket (as a spacer) and the wider washer will cover the frame hole. Frame brackets are NOT mirrored. See Figure 8-9**
10. Tighten tray brackets as specified: M10 hardware to 35-40 ft-lbs and M12 hardware to 50-55 ft-lbs.

FIGURE 8

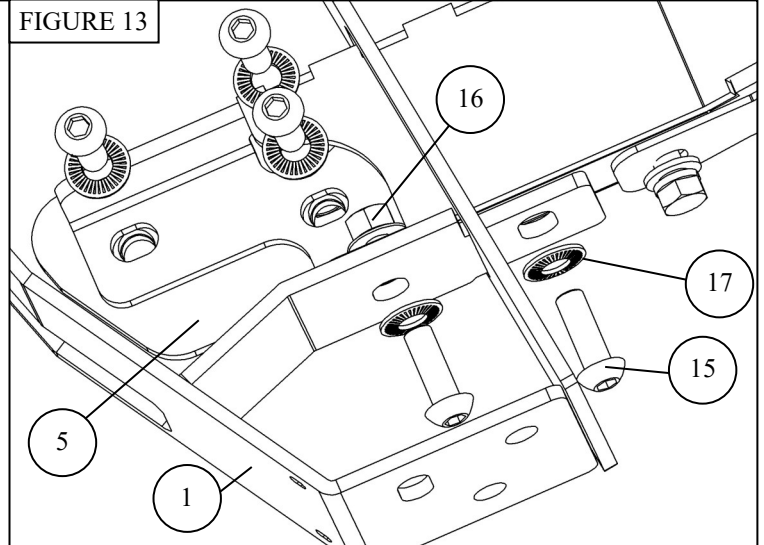
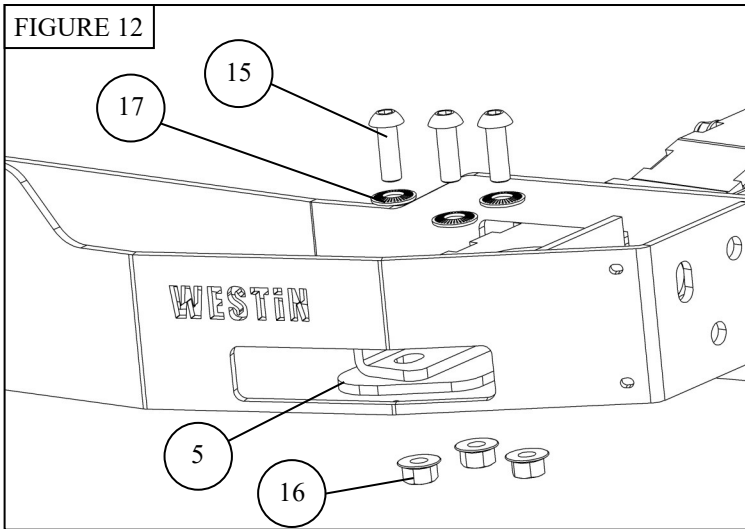


11. Before installing the front fascia, trim the lower grille slots as shown in the images below. **Note: See Figure 10-11**
12. Reinstall the front Fascia



Westin Automotive Products, Inc.
320 W. Covina Blvd
San Dimas, Ca. 91773

13. Using supplied M12 hardware, loosely assemble the winch tray and spacer plate to the tray brackets. **Note: If you are using the optional Westin tow hooks 46-3005, discard the spacer plates (5) and install in the same location. See Figures 12 and 13**
14. Adjust as needed and torque M12 hardware to 50-55 ft-lbs.
15. Install your winch at this time



GRILLE GUARD INSTALLATION

NOTE: IF INSTALLING ON 2024 AND LATER MODEL, PROCEED TO PAGE 6

16. Using the provided templates (25 & 26), cut at the dotted lines and place the indicated side at 2" from the center of the fascia and the top edge at the lower edge of the grill, carefully drill a 2" hole at each side of the fascia. **(Figure 14)** Carefully clean the hole edges.
17. Remove the factory bolt shown in **Figure 15** and save it to be used in the next step.
18. Place the upper brackets into the holes and install them using the previously removed bolts. **(Figure 15)** leave them loose for now.
19. Using M12 hardware install the grille guard to the winch tray, and the M10 to the upper brackets. **(Figure 15-19)**
20. Adjust as needed and torque all hardware as specified: M10 to 35-40 ft-lbs. and M12 hardware to 50-55 ft-lbs.

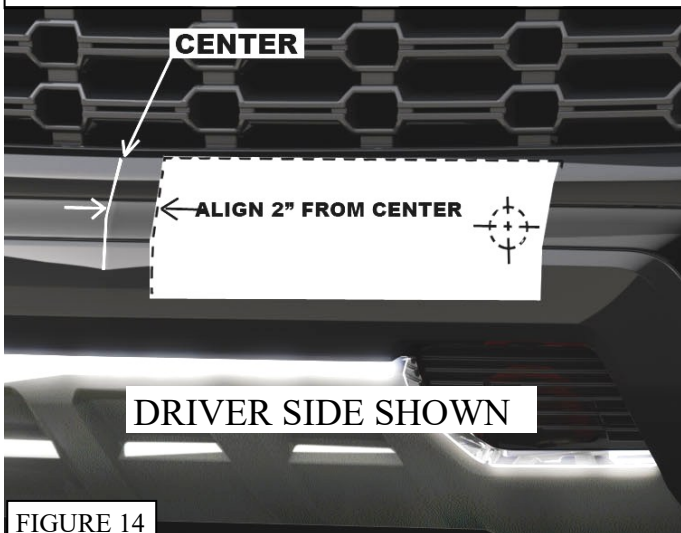


FIGURE 14

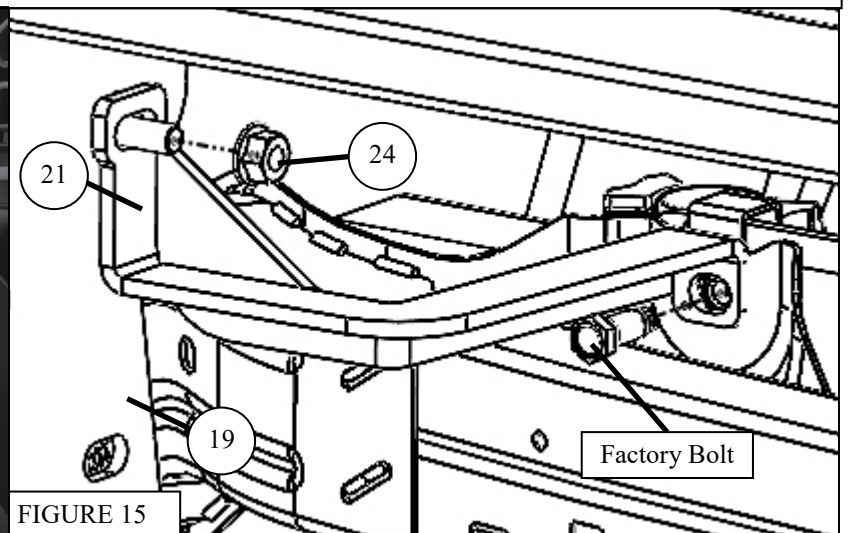
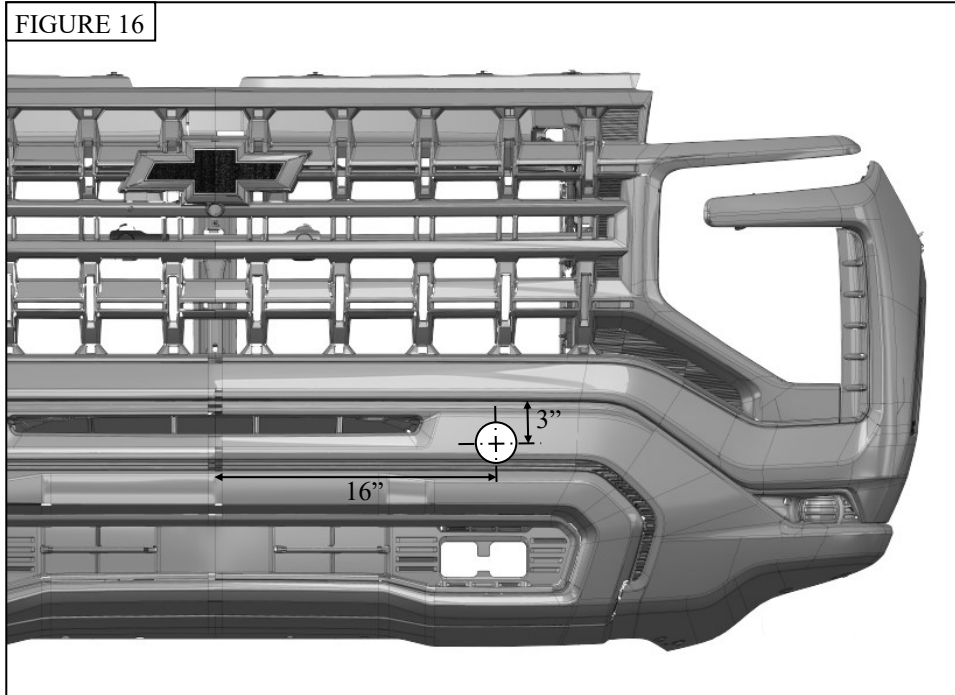


FIGURE 15

*** UPPER BRACKET INSTALLATION AND 2" HOLE TRIMMING ON 2024 AND LATER MODELS ***

16. At 16" from the center of the fascia and 3" from the edge of the fascia (figure 16), carefully first drill a 1/8" pilot hole and verify that the hole align with the head bolt to mount the bracket (You might need to push up the plastic behind to see the bolt head). Then proceed using a hole saw to trim 2" hole at each side of the fascia. (**Figure 16**) Carefully clean the hole edges.
17. Remove the stock bolt shown in **Figure 17** and save it to be used in the next step.
18. Place the upper brackets into the holes and install them using the previously removed bolts. (**Figure 18**) leave them loose for now.
19. Using the M10 hardware (22, 23, and 24) install the bracket straps (20 & 21) to the push bumper. (**Figure 19**)
20. Align and adjust the Push Bumper as necessary. Tighten all remaining fasteners M12 to 50-55 ft-lbs., M10 to 35-40 ft-lbs.



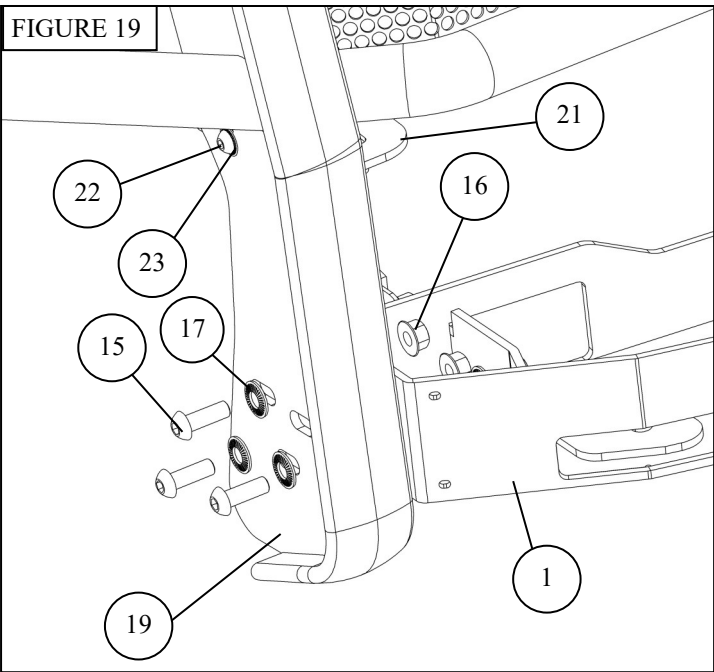
Trimmed bumper not installed on Figures 17 and 18 to have a clear view of the mounting bolt.



WESTIN

Westin Automotive Products, Inc.
320 W. Covina Blvd
San Dimas, Ca. 91773

Thank you for choosing Westin products
for additional installation assistance please call
Customer Service (800) 793-7846
www.westinautomotive.com



INSTALLATION COMPLETE



CARE INSTRUCTIONS

- REGULAR WAXING IS RECOMMENDED. DO NOT USE ANY TYPE OF POLISH OR WAX THAT MAY CONTAIN ABRASIVES.
- STAINLESS STEEL PRODUCTS CAN BE CLEANED WITH MILD SOAP AND WATER. STAINLESS STEEL POLISH SHOULD BE USED TO POLISH SMALL SCRATCHES.
- GLOSS BLACK FINISHES SHOULD BE CLEANED WITH MILD SOAP AND WATER.



Westin Automotive Products, Inc.
320 W. Covina Blvd
San Dimas, Ca. 91773

Thank you for choosing Westin products
for additional installation assistance please call
Customer Service (800) 793-7846
www.westinautomotive.com



WARNING



Failure to follow these instructions could lead to death, personal injury, and / or property damage.

Failure to follow these instructions could lead to death, personal injury, and / or property damage.

FASTENERS:

All Westin supplied fasteners must be utilized and installed in accordance with the installation instructions and apply torque to the specifications as defined. **DOUBLE CHECK ALL FASTENERS BEFORE INITIAL USE, AND PERIODICALLY IN THE FUTURE TO ENSURE PROPER FUNCTION AND SAFETY.**

DRILLING:

Most Westin products do not require drilling for installation. If drilling is defined as required, use caution when drilling a vehicle. **FAILURE TO REVIEW AN AREA TO BE DRILLED MAY RESULT IN PERSONAL INJURY AND/OR INJURY TO OTHERS AS WELL AS VEHICLE DAMAGE.**

EYE PROTECTION:

ALWAYS WEAR SAFETY GLASSES OR GOGGLES DURING THE INSTALLATION PROCESS TO AVOID PERSONAL INJURY.

MAXIMUM TOWING/CARRYING CAPACITY: (if applicable)

The Westin Receiver Hitches will have a visible tow rating label affixed directly on the product. User should never exceed the vehicle manufacturers maximum tow and weight rating regardless of the capacity of the hitch. **FAILURE TO FOLLOW THESE GUIDELINES WILL VOID THE WESTIN WARRANTY AND MAY RESULT IN PERSONAL INJURY AND/OR INJURY TO OTHERS AS WELL AS VEHICLE DAMAGE.**

FOR CALIFORNIA RESIDENTS ONLY-PROP 65 WARNING:

Some products may contain chemicals such as DEHP, which can cause cancer, birth defects or other reproductive harm. For more info go to www.p65warnings.ca.gov



Westin Automotive Products, Inc.
320 W. Covina Blvd
San Dimas, Ca. 91773