

INSTALLATION INSTRUCTIONS

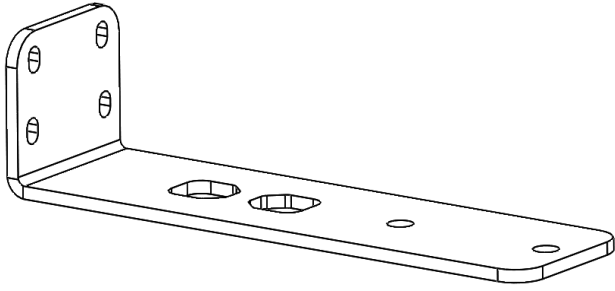
HLR Ladder-Side Load Bracket



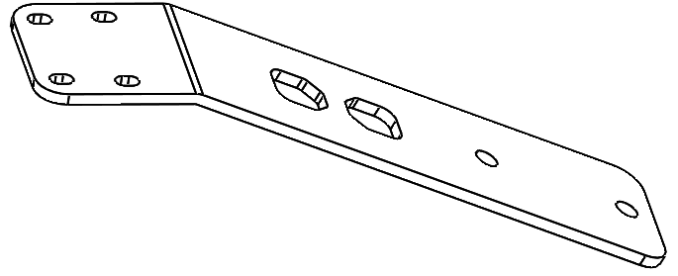
APPLICATION:
Accessory for HLR Truck Racks
PART NUMBER:
57-89025

CONTENT

ITEM	QUANTITY	DESCRIPTION	TOOLS NEEDED
1	2	Side Bracket	13mm Wrench
2	2	Top Bracket	13mm Socket
3	8	M8 Square Head Bolt	3/8" Ratchet
4	8	M8 Serrated Flange Nut	10mm wrench
5	8	M8 Flat Washer Small	4mm Allen Key
6	8	M6 Button Head Bolt	
7	16	M6 Flat Washer	
8	8	M6 Hex Nuts	
9	8	M6 Split Lock Washers	



ITEM 1



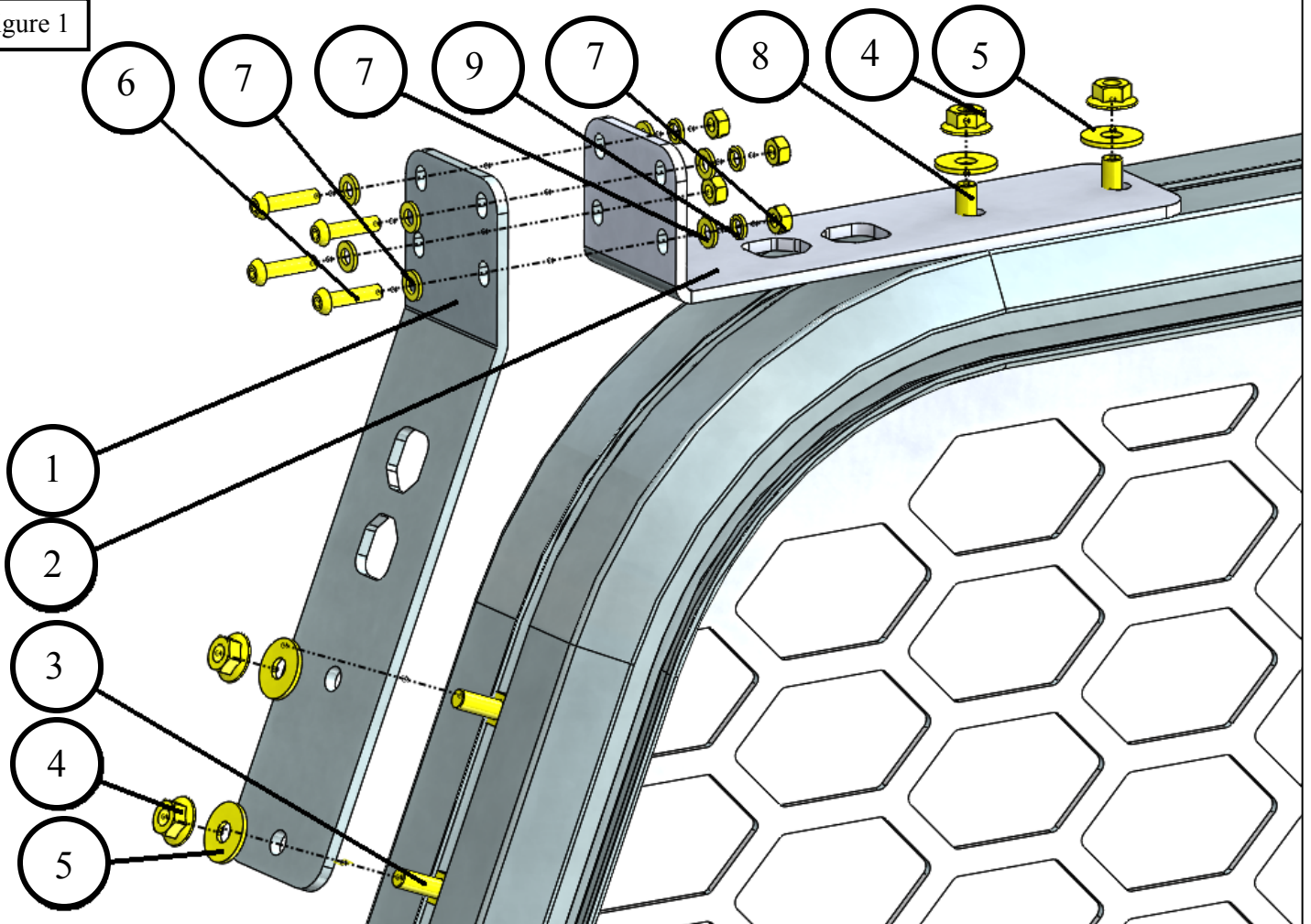
ITEM 2

PROCEDURE

1. Remove contents from box, verify if all parts listed are present and free from damage. Carefully read and understand all instructions before attempting installation.
Failure to identify damage before installation could lead to a rejection of any claim.

2. Position items 1 and 2 according to Figure 1.
3. Assemble using supplied hardware according to Figure 1.
4. Tighten all M6 hardware to 5-7 ft-lbs and all M8 hardware to 15-18 ft-lbs.

Figure 1



Installation Complete



WESTIN Westin Automotive Products, Inc.
320 W. Covina Blvd
San Dimas, Ca. 91773

P.N.: 75-578902-RevA

ECO #: W17-0093

3

Thank you for choosing Westin products
for additional installation assistance please call
Customer Service (800) 793-7846
www.westinautomotive.com

DATE: 05/10/18



WARNING



Failure to follow these instructions could lead to death, personal injury, and / or property damage.

Failure to follow these instructions could lead to death, personal injury, and / or property damage.

FASTENERS:

All Westin supplied fasteners must be utilized and installed in accordance with the installation instructions and apply torque to the specifications as defined. **DOUBLE CHECK ALL FASTENERS BEFORE INITIAL USE, AND PERIODICALLY IN THE FUTURE TO ENSURE PROPER FUNCTION AND SAFETY.**

DRILLING:

Most Westin products do not require drilling for installation. If drilling is defined as required, use caution when drilling a vehicle. **FAILURE TO REVIEW AN AREA TO BE DRILLED MAY RESULT IN PERSONAL INJURY AND/OR INJURY TO OTHERS AS WELL AS VEHICLE DAMAGE.**

EYE PROTECTION:

ALWAYS WEAR SAFETY GLASSES OR GOGGLES DURING THE INSTALLATION PROCESS TO AVOID PERSONAL INJURY.

MAXIMUM TOWING/CARRYING CAPACITY:

The Westin Receiver Hitches will have a visible tow rating label affixed directly on the product. User should never exceed the vehicle manufacturers maximum tow and weight rating regardless of the capacity of the hitch. **FAILURE TO FOLLOW THESE GUIDELINES WILL VOID THE WESTIN WARRANTY AND MAY RESULT IN PERSONAL INJURY AND/OR INJURY TO OTHERS AS WELL AS VEHICLE DAMAGE.**



Westin Automotive Products, Inc.
320 W. Covina Blvd
San Dimas, Ca. 91773