



INSTALLATION INSTRUCTIONS

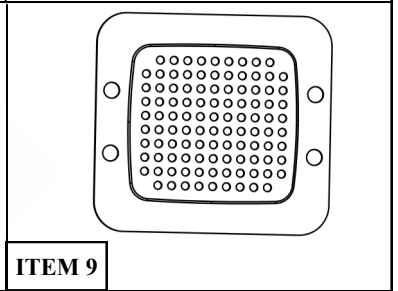
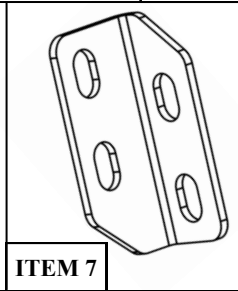
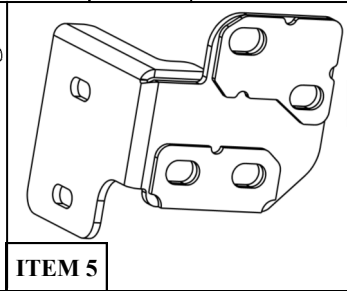
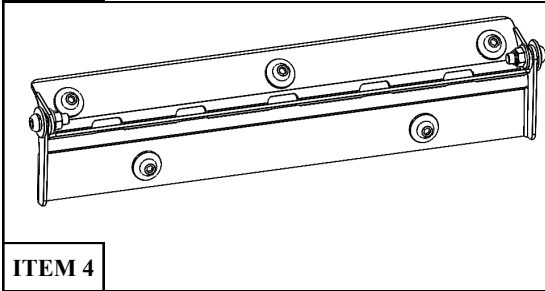
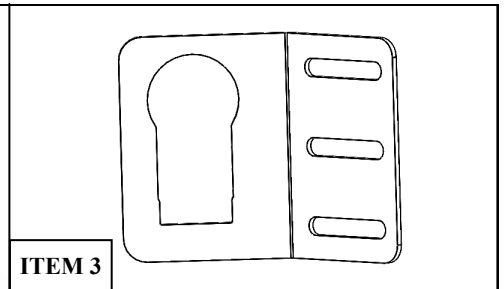
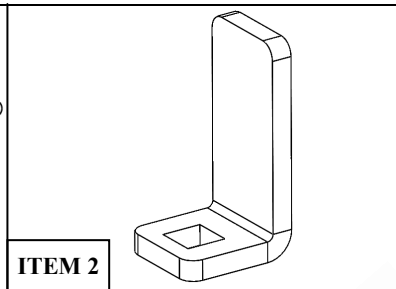
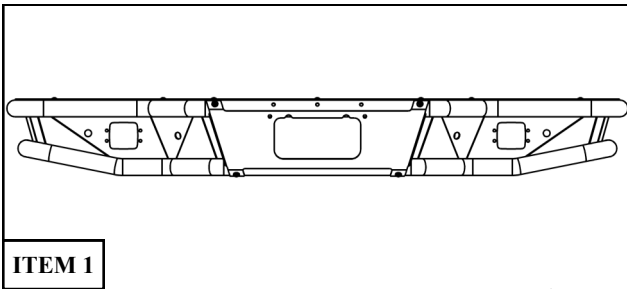
OUTLAW REAR BUMPER

APPLICATION: 2014-2018 Toyota Tundra

PART NUMBER: 58-81035

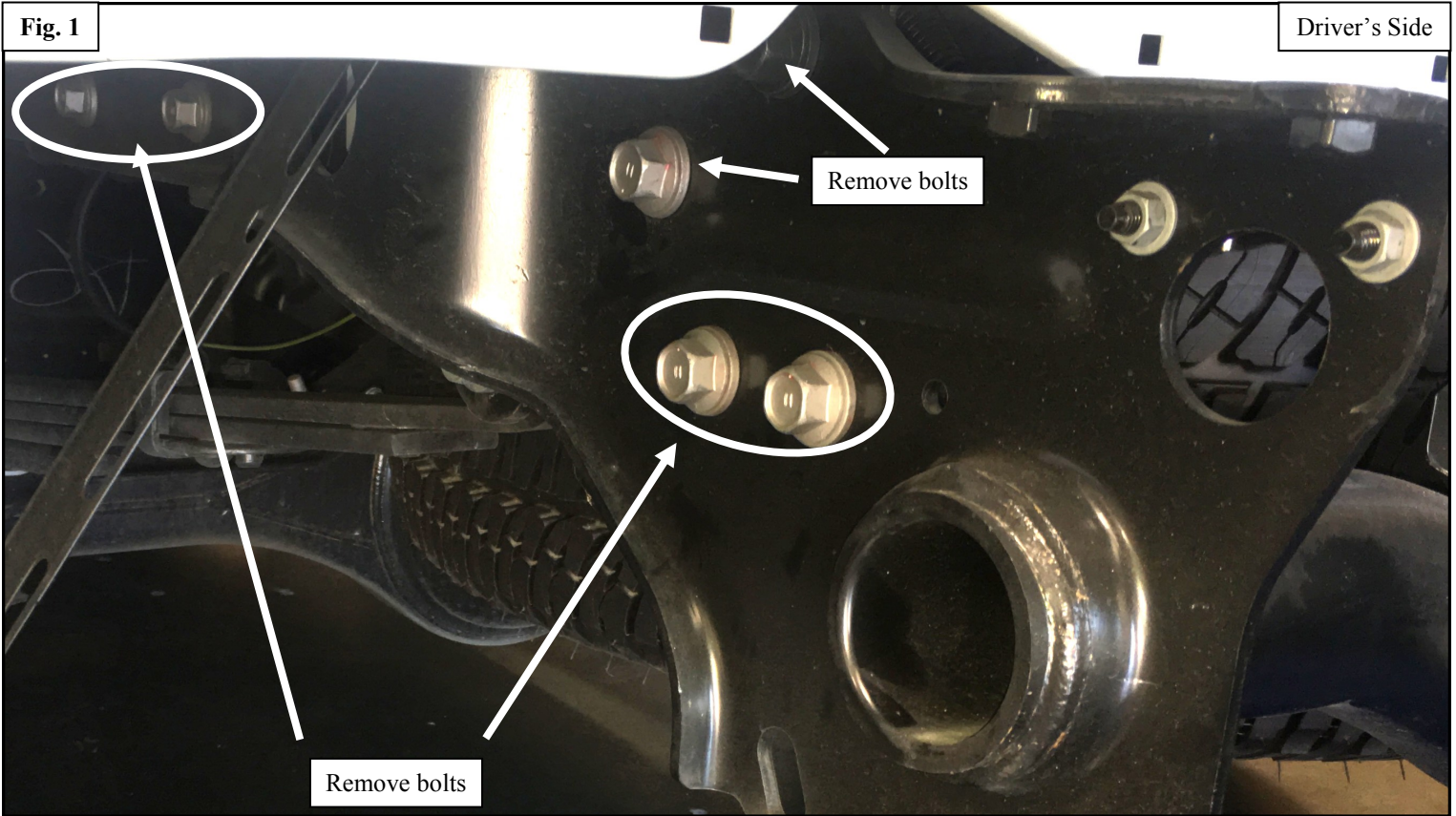
| CONTENT | | | |
|---------|----------|---|---------------|
| ITEM | QUANTITY | DESCRIPTION | TOOLS NEEDED |
| 1 | 1 | REAR BUMPER | 18MM WRENCH |
| 2 | 4 | SENSOR L-TAB | 5MM ALLEN |
| 3 | 1 | TRAILER CONNECTOR BRACKET | 13MM SOCKET |
| 4 | 1 | LICENSE PLATE SWING MOUNT | 17MM SOCKET |
| 5,6 | 2 | FRAME BRACKET, DRIVER (5) AND PASSENGER (6) | 19MM SOCKET |
| 7,8 | 2 | SUPPORT L-BRACKET, DRIVER (7) AND PASSENGER (8) | 13MM WRENCH |
| 9 | 2 | LED CUTOUT MESH COVER | 17MM WRENCH |
| 10 | 6 | M14 HEX HEAD BOLT (YELLOW ZINC) | 19MM WRENCH |
| 11 | 6 | M14 FLAT WASHER (YELLOW ZINC) | 10MM SOCKET |
| 12 | 6 | M14 SPLIT LOCK WASHER (YELLOW ZINC) | 10MM WRENCH |
| 13 | 2 | M16 HEX HEAD BOLT (YELLOW ZINC) | PLYER TOOL |
| 14 | 2 | M16 SPLIT LOCK WASHER (YELLOW ZINC) | RATCHET |
| 15 | 2 | M16 FLAT WASHER (YELLOW ZINC) | TORQUE WRENCH |
| 16 | 4 | M6 CARRIAGE BOLT (YELLOW ZINC) | |
| 17 | 4 | M6 SPLIT LOCK WASHER (YELLOW ZINC) | |
| 18 | 4 | M6 FLAT WASHER (YELLOW ZINC) | |
| 19 | 4 | M12 HEX HEAD BOLT (YELLOW ZINC) | |
| 20 | 4 | M12 SPLIT LOCK WASHER (YELLOW ZINC) | |
| 21 | 8 | M12 FLAT WASHER (YELLOW ZINC) | |
| 22 | 4 | M12 HEX NUT (YELLOW ZINC) | |
| 23 | 2 | M8 CARRIAGE BOLT (BLACK ZINC) | |
| 24 | 2 | M8 HEX NUT (BLACK ZINC) | |
| 25 | 2 | M8 SPLIT LOCK WASHER (BLACK ZINC) | |
| 26 | 2 | M8 FLAT WASHER (BLACK ZINC) | |
| 27 | 5 | M6 BUTTON HEAD BOLT (BLACK ZINC) | |
| 28 | 5 | M6 SPLIT LOCK WASHER (BLACK ZINC) | |
| 29 | 5 | M6 FLAT WASHER (BLACK ZINC) | |
| 30 | 4 | M6 HEX NUT (BLACK ZINC) | |
| 31 | 10 | ZIP TIE | |
| 32 | 10 | ZIP TIE ADHESIVE SQUARE MOUNTS | |
| 33 | 2 | T-TAB CONNECTOR MALE | |
| 34 | 2 | T-TAB CONNECTOR FEMALE | |
| | | | |

ANTI-SEIZE LUBRICANT MUST BE USED ON ALL STAINLESS STEEL FASTENERS TO PREVENT THREAD DAMAGE AND GALLING

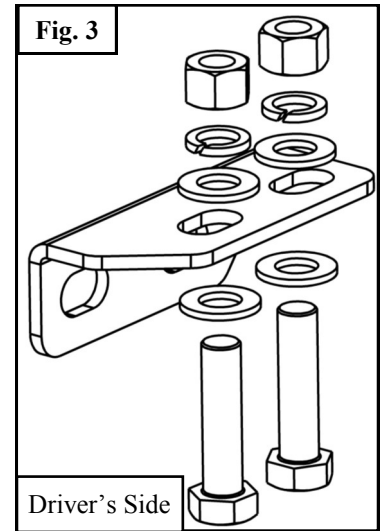
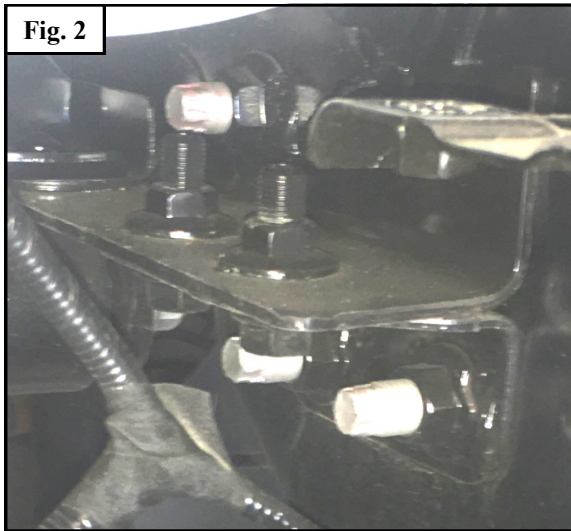


PROCEDURE

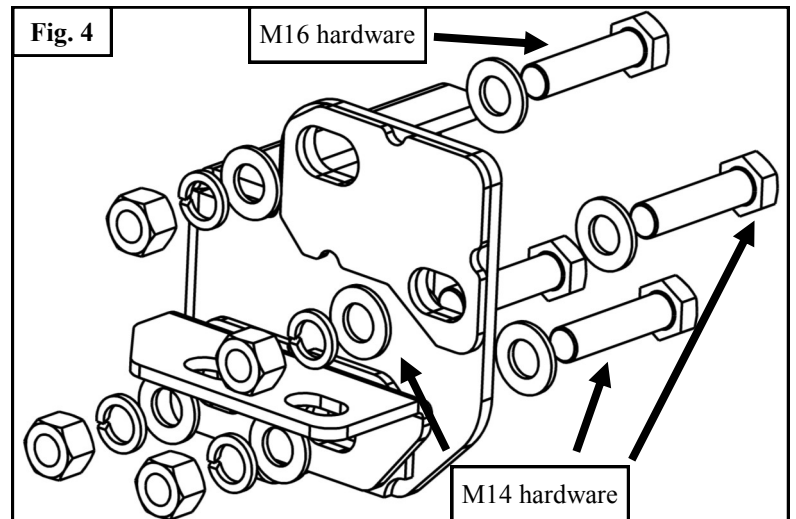
1. Remove contents from box, verify if all parts listed are present and free from damage.
Carefully read and understand all instructions before attempting installation.
Failure to identify damage before installation could lead to a rejection of any claim.
2. Disconnect license plate lights, trailer connector and park assist sensors so that bumper assembly can be removed.
3. On each side of the vehicle, remove the 6 bolts indicated in **Figure 1** and remove stock bumper/hitch assembly. Remove carefully ; this bumper and hitch are very heavy.



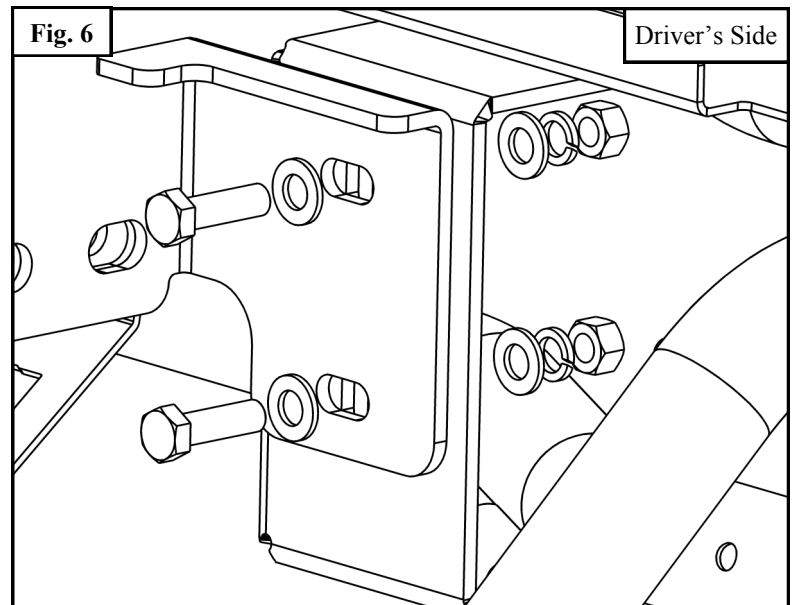
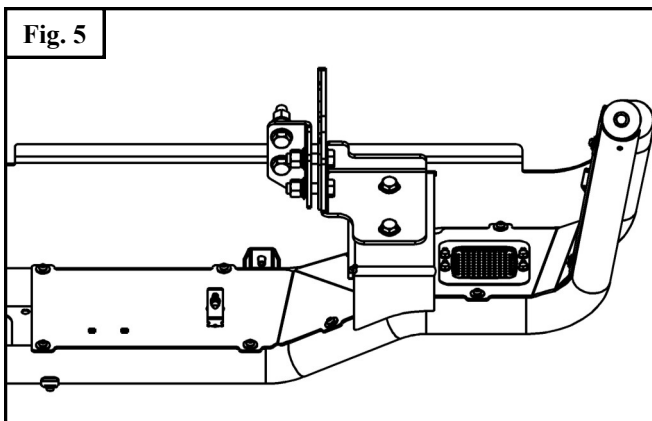
4. Loosely install support L-brackets (7 & 8) using the original M12 hardware. See **Figures 2 & 3**.



5. Loosely install the frame brackets (5 & 6) using the supplied M14 and M16 hardware (10-15).
Note: Alternatively, original hardware can be used. Driver's side shown. M16 hardware is used on the top slot of the frame bracket while M14 hardware is used for the rest of the slots. See **Figure 4**.



6. Mount bumper in the position shown in **Figure 5** and loosely install the supplied M12 hardware (19-22). See **Figure 6**.

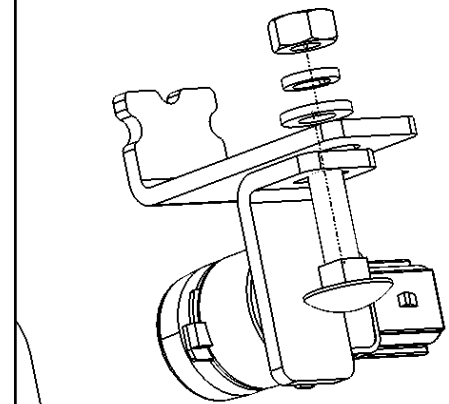


WARNING:

After you have mounted bumper on the frame brackets. CAREFULLY open tailgate. While tailgate is open, adjust the height of the bumper so that it has about 3/8" of clearance with respect to the tailgate.

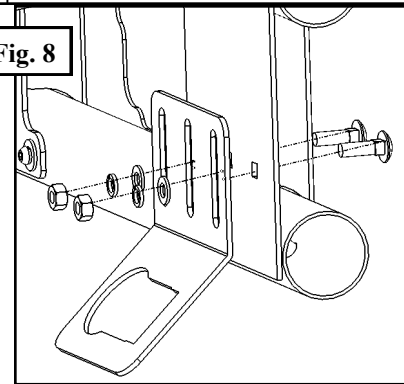
7. Tighten hardware to the following specifications. M12 to 50-55 ft-lbs, M14 to 90-100 ft-lbs, and M16 to 150-160 ft-lbs.
8. Install parking sensors by positioning the holes concentrically on bumper and pressing with L-tabs (2) against bumper plate. Loosely fasten L-tabs with the supplied M6 hardware (16-18, 30). See **Figure 7**.
9. Use items 31 and 32 to secure sensor in place.
10. **Note:** Be sure to maintain the orientation of the sensor so that it remains consistent with its original orientation.
10. Tighten M6 hardware to 5-7 ft-lbs.

Fig. 7



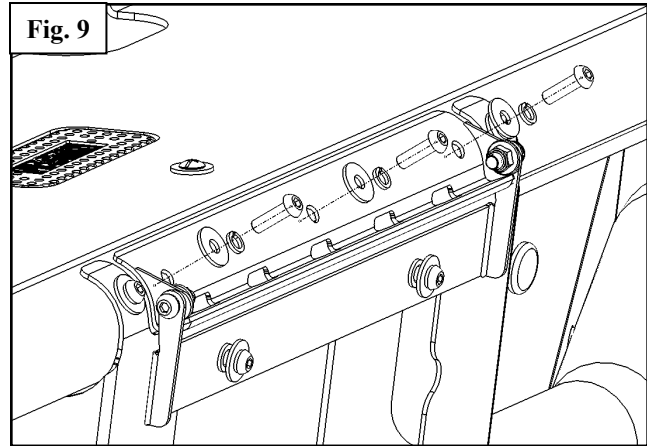
11. Using M8 hardware (23-26), install trailer connector bracket (3) to the back plate of the bumper. Adjust up and down as desired and tighten M8 hardware to 15-18 ft-lbs. See **Figure 8**.

Fig. 8



12. Using M6 SEMS button head hardware (27-29), install license plate swing mount (4) on bumper. Tighten M6 hardware to 5-7 ft-lbs. See **Figure 9**.
13. Install license plate on item 4 using M6 SEMS button head hardware (27-29) and tighten to 5-7 ft-lbs.
14. Tighten the two nylon lock nuts on the sides until it has just enough resistance to prevent rotation due to normal condition while still allowing rotation by hand when desired or needed to access hitch.

Fig. 9



15. Using items 33 and 34 connect the LED license plate light to one of the OEM license plate lights. Connect the black cable from the LED tape to the black cable going into the OEM license plate light. Then, connect the red cable on the LED tape to the colored (non-black) cable going to the OEM license plate light. Crimp carefully and cover with electrical tape. Use supplied zip ties and zip tie mounts to position cables as desired.

INSTALLATION COMPLETE



CARE INSTRUCTIONS

- REGULAR WAXING IS RECOMMENDED. DO NOT USE ANY TYPE OF POLISH OR WAX THAT MAY CONTAIN ABRASIVES.
- STAINLESS STEEL PRODUCTS CAN BE CLEANED WITH MILD SOAP AND WATER. STAINLESS STEEL POLISH SHOULD BE USED TO POLISH SMALL SCRATCHES.
- GLOSS BLACK FINISHES SHOULD BE CLEANED WITH MILD SOAP AND WATER.

WESTIN Westin Automotive Products, Inc.
320 W. Covina Blvd
San Dimas, Ca. 91773

Thank you for choosing Westin products
for additional installation assistance please call
Customer Service (800) 793-7846

www.westinautomotive.com



WARNING



Failure to follow these instructions could lead to death, personal injury, and / or property damage.

FASTENERS:

All Westin supplied fasteners must be utilized and installed in accordance with the installation instructions and apply torque to the specifications as defined. **DOUBLE CHECK ALL FASTENERS BEFORE INITIAL USE, AND PERIODICALLY IN THE FUTURE TO ENSURE PROPER FUNCTION AND SAFETY.**

DRILLING:

Most Westin products do not require drilling for installation. If drilling is defined as required, use caution when drilling a vehicle. **FAILURE TO REVIEW AN AREA TO BE DRILLED MAY RESULT IN PERSONAL INJURY AND/OR INJURY TO OTHERS AS WELL AS VEHICLE DAMAGE.**

EYE PROTECTION:

ALWAYS WEAR SAFETY GLASSES OR GOGGLES DURING THE INSTALLATION PROCESS TO AVOID PERSONAL INJURY.

MAXIMUM TOWING/CARRYING CAPACITY:

The Westin Receiver Hitches will have a visible tow rating label affixed directly on the product. User should never exceed the vehicle manufacturers maximum tow and weight rating regardless of the capacity of the hitch. **FAILURE TO FOLLOW THESE GUIDELINES WILL VOID THE WESTIN WARRANTY AND MAY RESULT IN PERSONAL INJURY AND/OR INJURY TO OTHERS AS WELL AS VEHICLE DAMAGE.**