

INSTALLATION INSTRUCTIONS

OUTLAW REAR BUMPER

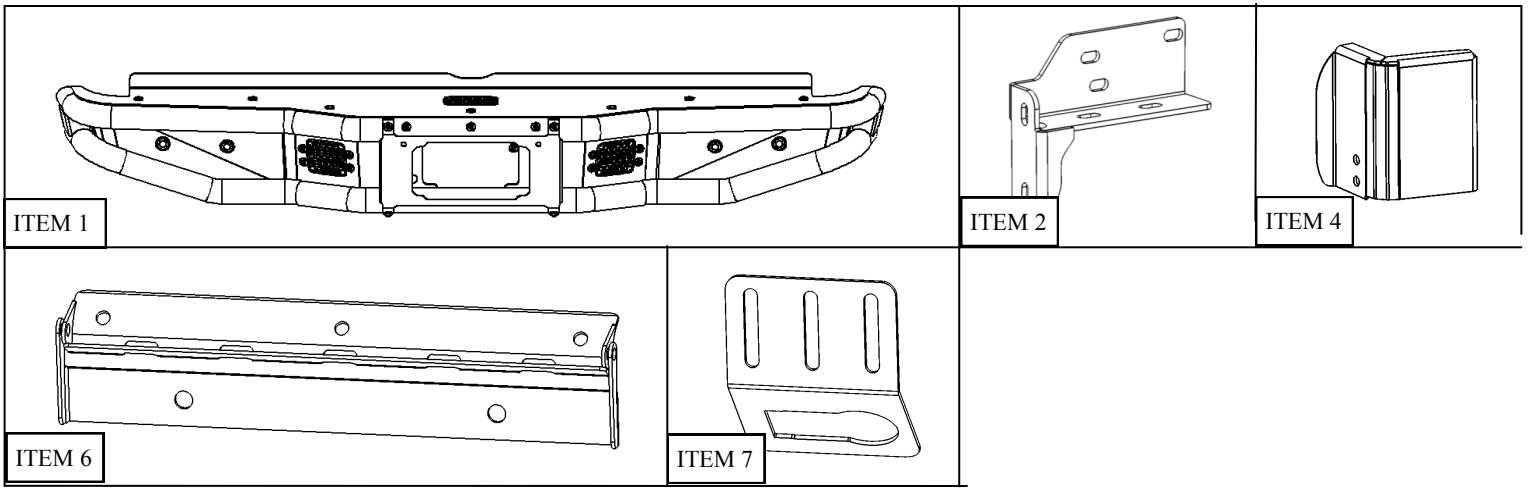


APPLICATION:
2016-2018 Toyota Tacoma
PART NUMBER:
58-81045

CONTENT			
ITEM	QUANTITY	DESCRIPTION	TOOLS NEEDED
1	1	Outlaw Rear Bumper	19mm Socket
2	1	Mounting Bracket (Driver)	19mm Wrench
3	1	Mounting Bracket (Passenger)	Ratchet
4	1	Corner Cover (Driver)	2.5mm Allen
5	1	Corner Cover (Passenger)	5mm Allen
6	1	License Plate Mount	13mm Socket
7	1	Tow Plug Bracket	13mm Wrench
8	5	(SEMS) M6 Button Head, Flat Washer, Split Lock Washer	
9	2	M8 Hex Nut	
10	2	M8 Carriage Screw	
11	6	M8 Flat Washer	
12	6	M8 Split Lock Washer	
13	4	M8 Serrated Flange Nut	
14	4	M8 Button Head Bolts	
15	10	M12 Fine Thread Hex Bolts	
16	14	M12 Lock Washer	
17	18	M12 Flat Washer	
18	4	M12 Coarse Thread hex Bolts	
19	4	M12 Hex Nut	
20	8	M4 Button Head Bolt	
21	10	Zip Ties	
22	10	Zip Tie Adhesive Mounts	
23	2	T-Tap Connector Male	
24	2	T-Tap Connector Female	
ANTI-SEIZE LUBRICANT MUST BE USED ON ALL STAINLESS STEEL FASTENERS TO PREVENT THREAD DAMAGE AND GALLING			
CARE INSTRUCTIONS			
<ul style="list-style-type: none"> REGULAR WAXING IS RECOMMENDED. DO NOT USE ANY TYPE OF POLISH OR WAX THAT MAY CONTAIN ABRASIVES. STAINLESS STEEL PRODUCTS CAN BE CLEANED WITH MILD SOAP AND WATER. STAINLESS STEEL POLISH SHOULD BE USED TO POLISH SMALL SCRATCHES. GLOSS BLACK FINISHES SHOULD BE CLEANED WITH MILD SOAP AND WATER. 			

WESTIN Westin Automotive Products, Inc.
320 W. Covina Blvd
San Dimas, Ca. 91773

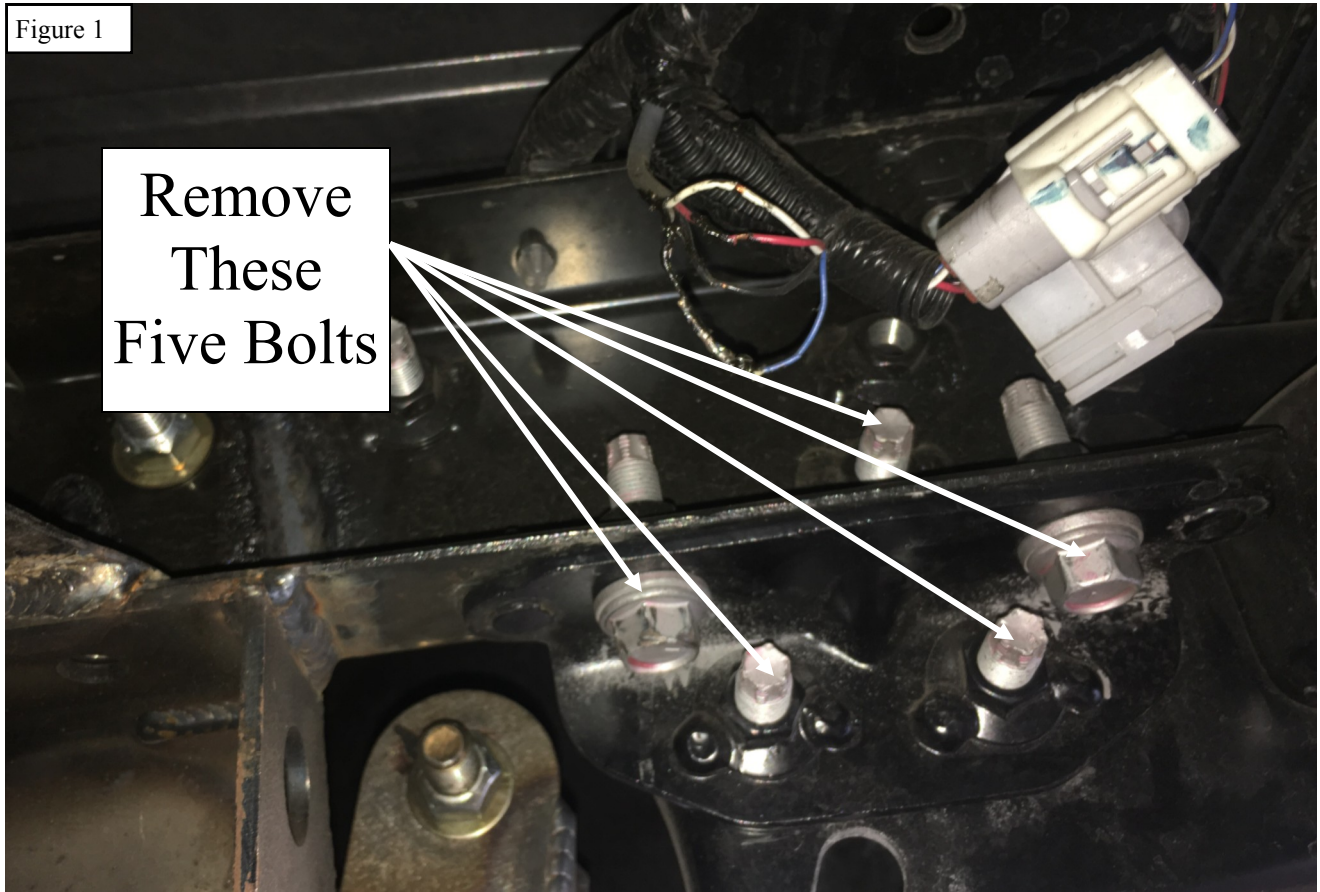
Thank you for choosing Westin products
for additional installation assistance please call
Customer Service (800) 793-7846



PROCEDURE

1. Remove contents from box, verify if all parts listed are present and free from damage. Carefully read and understand all instructions before attempting installation.
Failure to identify damage before installation could lead to a rejection of any claim.
2. Disconnect all electrical connectors attached to rear bumper. (Two plug, sensors harness, etc.)
3. Proceed to unbolt M12 bolts attaching the bumper/hitch assembly to vehicle. See Fig 1. There are five on each side. Once all bolts have been remove, carefully pull the bumper assembly out and up to release from the frame.

Figure 1

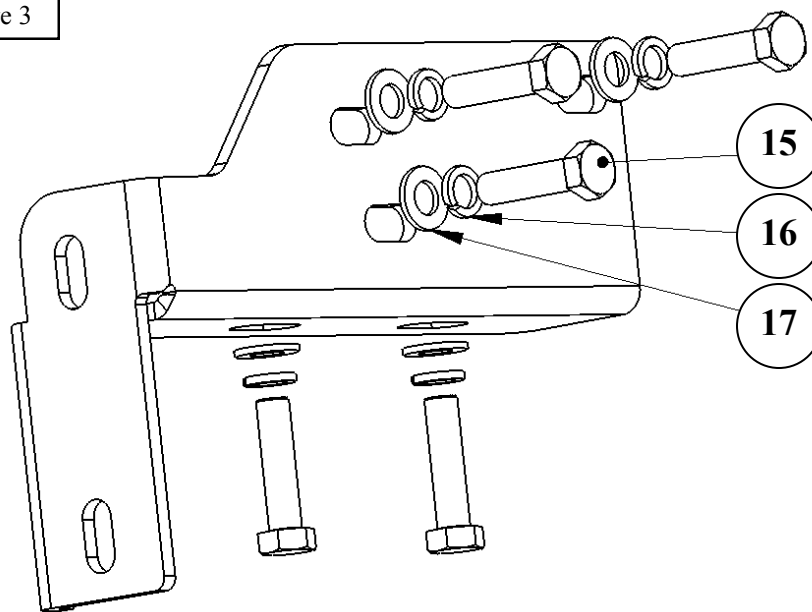


4. Position mounting brackets Items 2 and 3 on the outside of the frame. See **Fig. 2**. If you have purchased an Outlaw Hitch for your vehicle; this is a good time to install it.
5. Once the brackets have been positioned in place, use the supplied M12 fine thread bolts to mount the brackets. You may also re-use the OEM M12 hardware you removed in previous step. See **Fig. 3**.

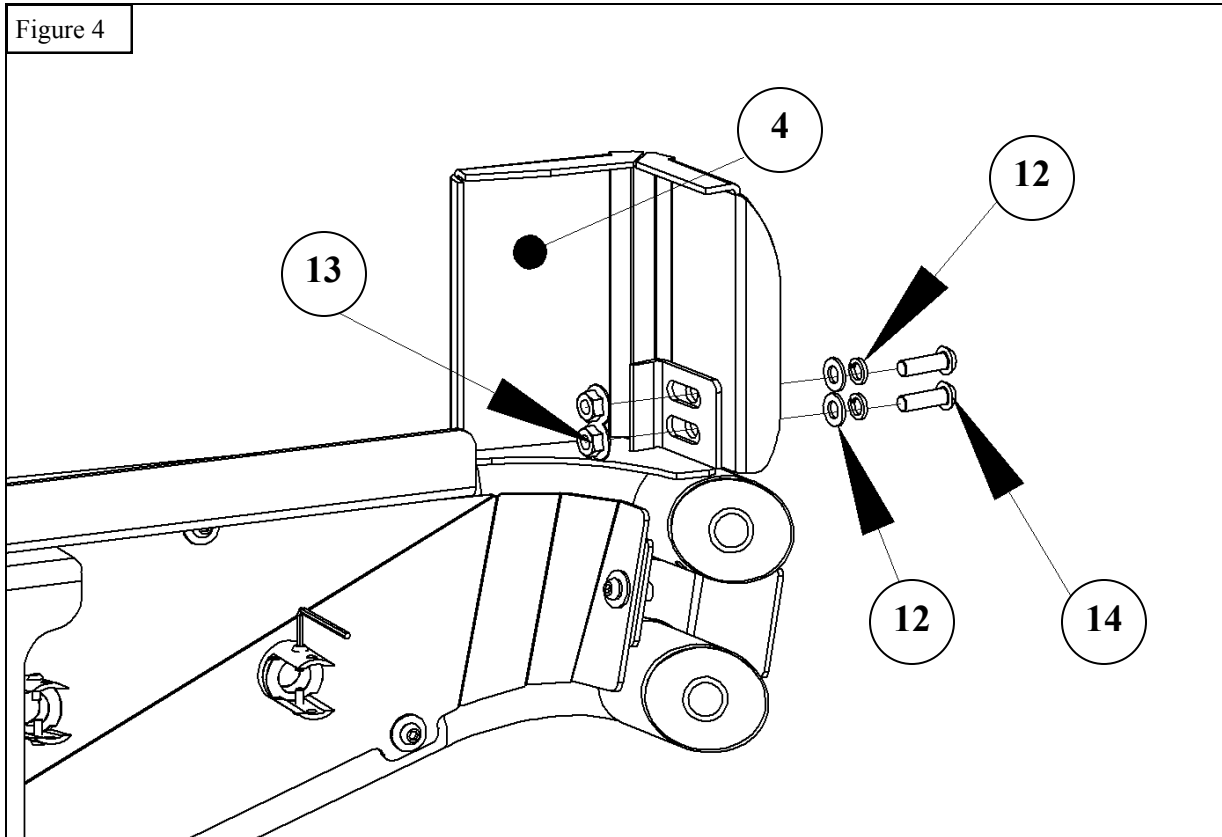
Figure 2



Figure 3



6. Before installing the bumper to the vehicle, proceed to mount the corner covers (Items 4 and 5) to the bumper. Using items 12-14, install the corner cover according to **Fig. 4**.
7. Tighten just enough so that the serrated nuts grab to the tabs on bumper. The final position of these corner covers will be obtained once the bumper is installed on the vehicle.



8. Before installing bumper on vehicle, it is recommended to mount parking sensors. Carefully remove sensors from OEM bumper. Insert sensors through the front side of the bumper into the sensor holder. Position the sensors in the same orientation as the OEM Sensors. Then using item 15, carefully lock the sensors in place. Do not over tighten screws as this may cause damage to sensors. **See Fig. 5**.



Note:
If necessary, top plate of bumper can be removed for easier access to sensors. This may also facilitate access to mounting hardware on step # 9.

9. proceed to install the bumper assembly to the brackets you have mounted to the vehicle. Carefully position the bumper against the brackets and using items 11-14, fasten the assembly. See **Figure 6** and **7**. **Do not tighten and do not open tailgate at this point of installation. The height of the bumper will be set after step 10.**

Figure 6

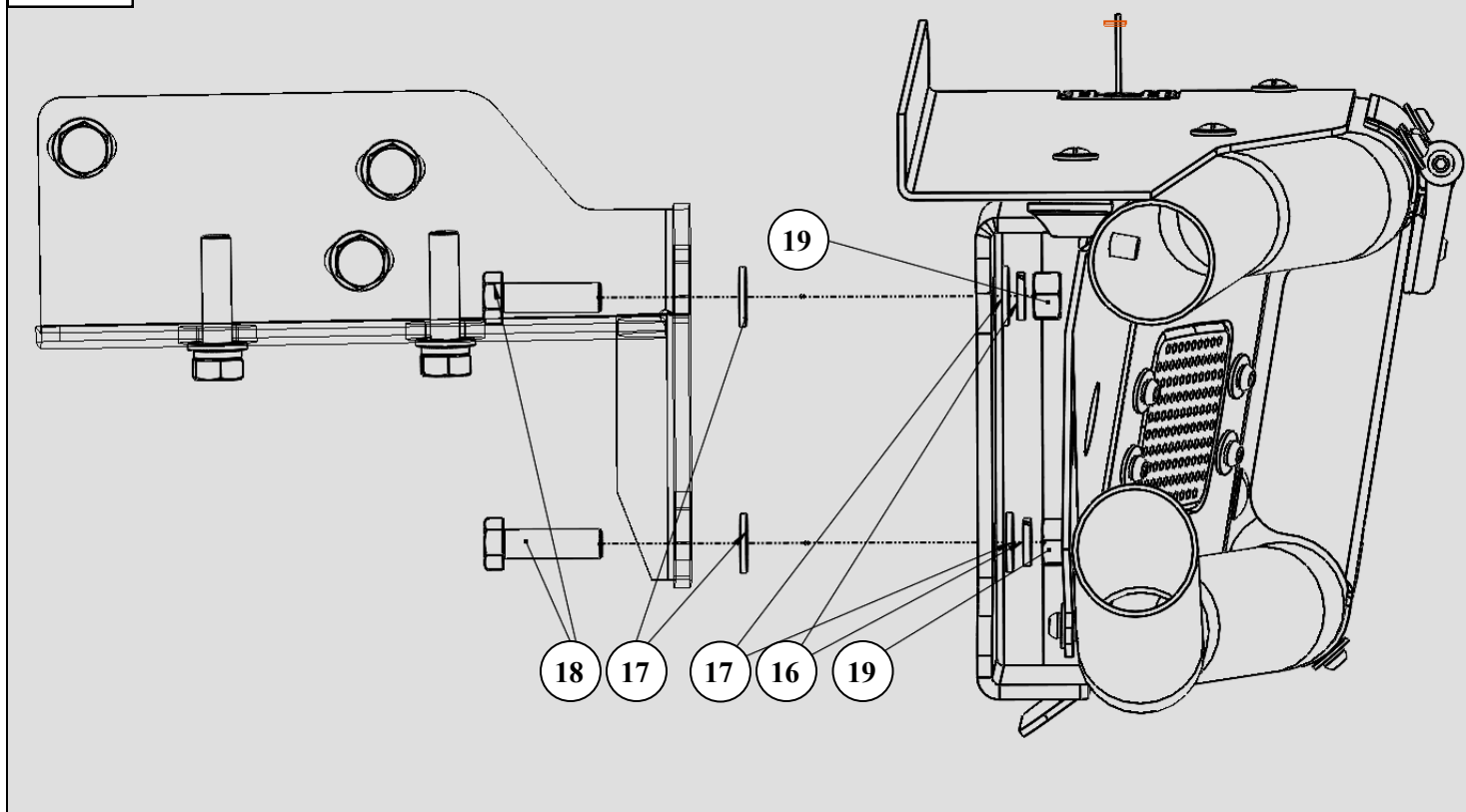


Figure 7



Westin Automotive Products, Inc.
320 W. Covina Blvd
San Dimas, Ca. 91773

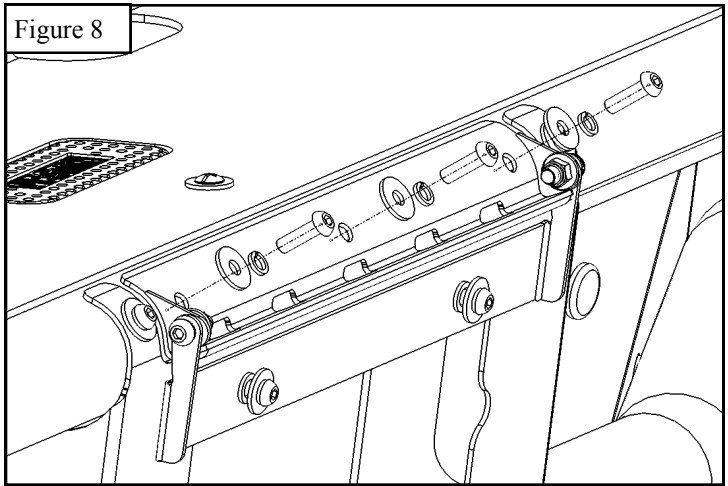
Thank you for choosing Westin products
for additional installation assistance please call
Customer Service (800) 793-7846

www.westinautomotive.com

10. Using M6 SEMS button head hardware (item 8), install license plate swing mount (item 6) on bumper. Tighten M6 hardware to 5-7 ft-lbs. See **Figure 8**.

Install license plate on item 4 using M6 SEMS button head hardware (8) and tighten to 5-7 ft-lbs.

Tighten the two nylon lock nuts on the sides until it has just enough resistance to prevent rotation due to normal condition while still allowing rotation by hand when desired or needed to access hitch.



Note:

At this point, you may CAREFULLY open tailgate. While tailgate is open, adjust the height of the bumper so that it has about 3/8" of clearance with respect to the tailgate. Then tighten M12 hardware installed on step 9. Torque M12 hardware to 80-85 ft-lbs.

11. Using M8 hardware (9-12), install trailer connector bracket (3) to the back plate of the bumper. Adjust up and down as desired and tighten M8 hardware to 15-18 ft-lbs. See **Figure 8**.

12. You may also mount the tow plug bracket to the hitch. See **Figure 9**.

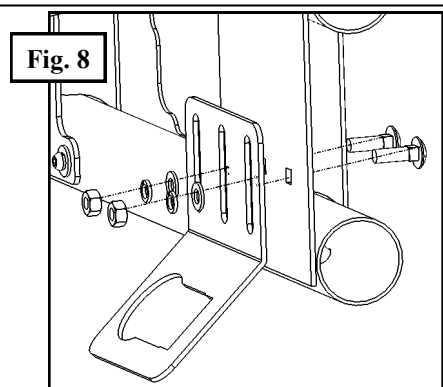


Figure 9



13. Using items 23 and 24 connect the LED license plate light to one of the OEM license plate lights. Connect the black cable from the LED tape to the black cable going into the OEM license plate light.

Then, connect the red cable on the LED tape to the colored (non-black) cable going to the OEM license plate light. Crimp carefully and cover with electrical tape. Use supplied zip ties and zip tie mounts to position cables as desired.

Installation Complete





WARNING



Failure to follow these instructions could lead to death, personal injury, and / or property damage.

FASTENERS:

All Westin supplied fasteners must be utilized and installed in accordance with the installation instructions and apply torque to the specifications as defined. **DOUBLE CHECK ALL FASTENERS BEFORE INITIAL USE, AND PERIODICALLY IN THE FUTURE TO ENSURE PROPER FUNCTION AND SAFETY.**

DRILLING:

Most Westin products do not require drilling for installation. If drilling is defined as required, use caution when drilling a vehicle. **FAILURE TO REVIEW AN AREA TO BE DRILLED MAY RESULT IN PERSONAL INJURY AND/OR INJURY TO OTHERS AS WELL AS VEHICLE DAMAGE.**

EYE PROTECTION:

ALWAYS WEAR SAFETY GLASSES OR GOGGLES DURING THE INSTALLATION PROCESS TO AVOID PERSONAL INJURY.

MAXIMUM TOWING/CARRYING CAPACITY:

The Westin Receiver Hitches will have a visible tow rating label affixed directly on the product. User should never exceed the vehicle manufacturers maximum tow and weight rating regardless of the capacity of the hitch. **FAILURE TO FOLLOW THESE GUIDELINES WILL VOID THE WESTIN WARRANTY AND MAY RESULT IN PERSONAL INJURY AND/OR INJURY TO OTHERS AS WELL AS VEHICLE DAMAGE.**