

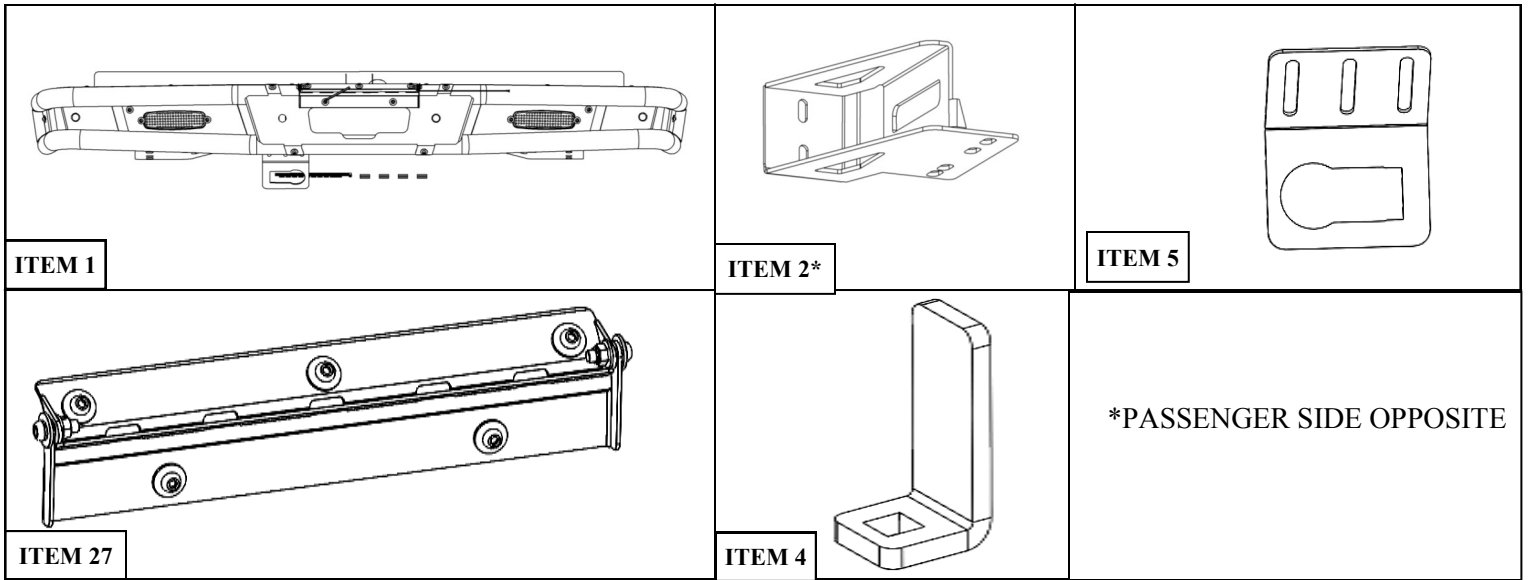
INSTALLATION INSTRUCTIONS

OUTLAW REAR BUMPER



APPLICATION:
2019-2020 Ford Ranger
PART NUMBER:
58-81085

CONTENT			
ITEM	QUANTITY	DESCRIPTION	TOOLS NEEDED
1	1	REAR BUMPER	18MM WRENCH
2	1	DRIVER FRAME BRACKET	5MM ALLEN
3	1	PASSENGER FRAME BRACKET	13MM SOCKET
4	4	SENSOR L-TAB	17MM SOCKET
5	1	TOW PLUG BRACKET	19MM SOCKET
6	4	M12 HEX NUT (YELLOW ZINC)	13MM WRENCH
7	8	M12 FLAT WASHER (YELLOW ZINC)	17MM WRENCH
8	4	M12 SPLIT LOCK WASHER (YELLOW ZINC)	19MM WRENCH
9	4	M12 HEX HEAD BOLT (YELLOW ZINC)	10MM SOCKET
10	4	M6 CARRIAGE BOLT (BLACK ZINC)	10MM WRENCH
11	4	M6 SPLIT LOCK WASHER (BLACK ZINC)	PLYER TOOL
12	4	M6 FLAT WASHER (BLACK ZINC)	RATCHET
13	4	M6 HEX NUT (BLACK ZINC)	TORQUE WRENCH
14	5	M6 BUTTON HEAD HEX BOLT SEMS HARDWARE	ELECTRICAL TAPE
15	5	M6 FLAT WASHER SEMS HARDWARE	
16	5	M6 LOCK WASHER SEMS HARDWARE	
17	2	M8 CARRIAGE BOLT (BLACK ZINC)	
18	2	M8 HEX NUT (BLACK ZINC)	
19	2	M8 FLAT WASHER (BLACK ZINC)	
20	2	M8 SPLIT LOCK WASHER (BLACK ZINC)	
21	10	ZIP TIES	
22	10	ZIP TIE MOUNTS	
23	2	T-TAB MALE CONNECTOR	
24	2	T-TAB FEMALE CONNECTOR	
25	4	SENSOR RUBBER GROMMETS	
26	8	DOUBLE SIDED SQUARE TAPE	
27	1	LISCENSE PLATE SWINGOUT	
ANTI-SEIZE LUBRICANT MUST BE USED ON ALL STAINLESS STEEL FASTENERS TO PREVENT THREAD DAMAGE AND GALLING			



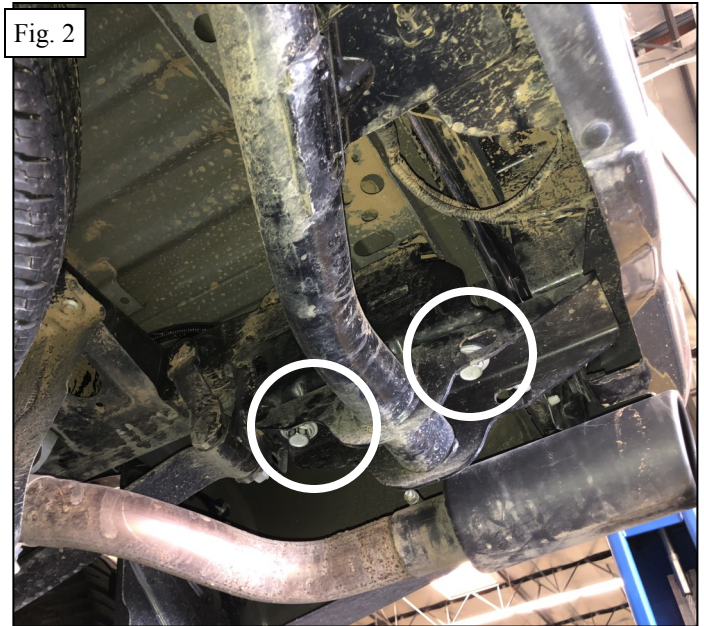
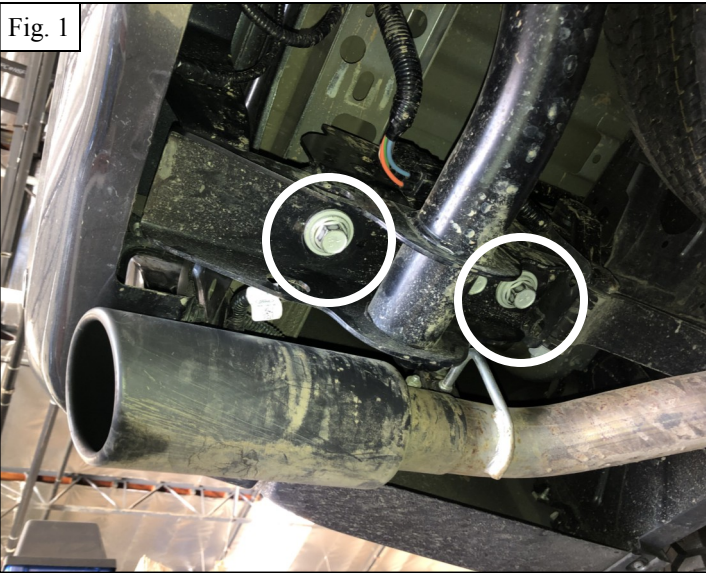
PROCEDURE

1. Remove contents from box, verify if all parts listed are present and free from damage.
Carefully read and understand all instructions before attempting installation.
Failure to identify damage before installation could lead to a rejection of any claim.

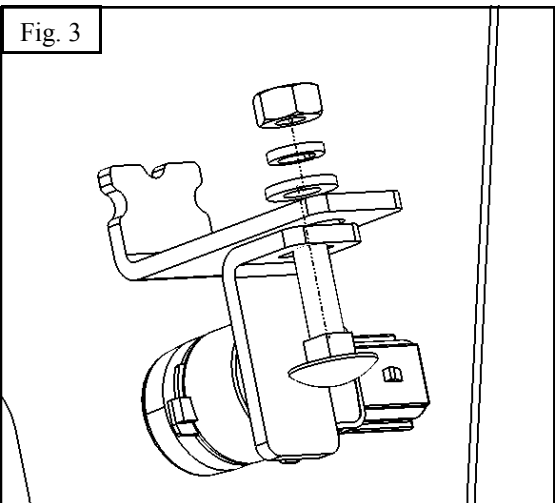
NOTE:

THIS BUMPER IS NOT COMPATIBLE WITH OEM HITCH. HITCH 58-81085H IS AVAILABLE TO REPLACE OEM HITCH AND WORK WITH THIS BUMPER. FOR MORE INFORMATION PLEASE REFER TO WWW.WESTINAUTOMOTIVE.COM.

2. Unbolt the factory hitch if equipped.
3. Remove all electrical connections from the rear bumper.
4. Remove the two bolts on each side of the rear bumper/hitch. See **Figure 1-2**
5. Remove the rear bumper.

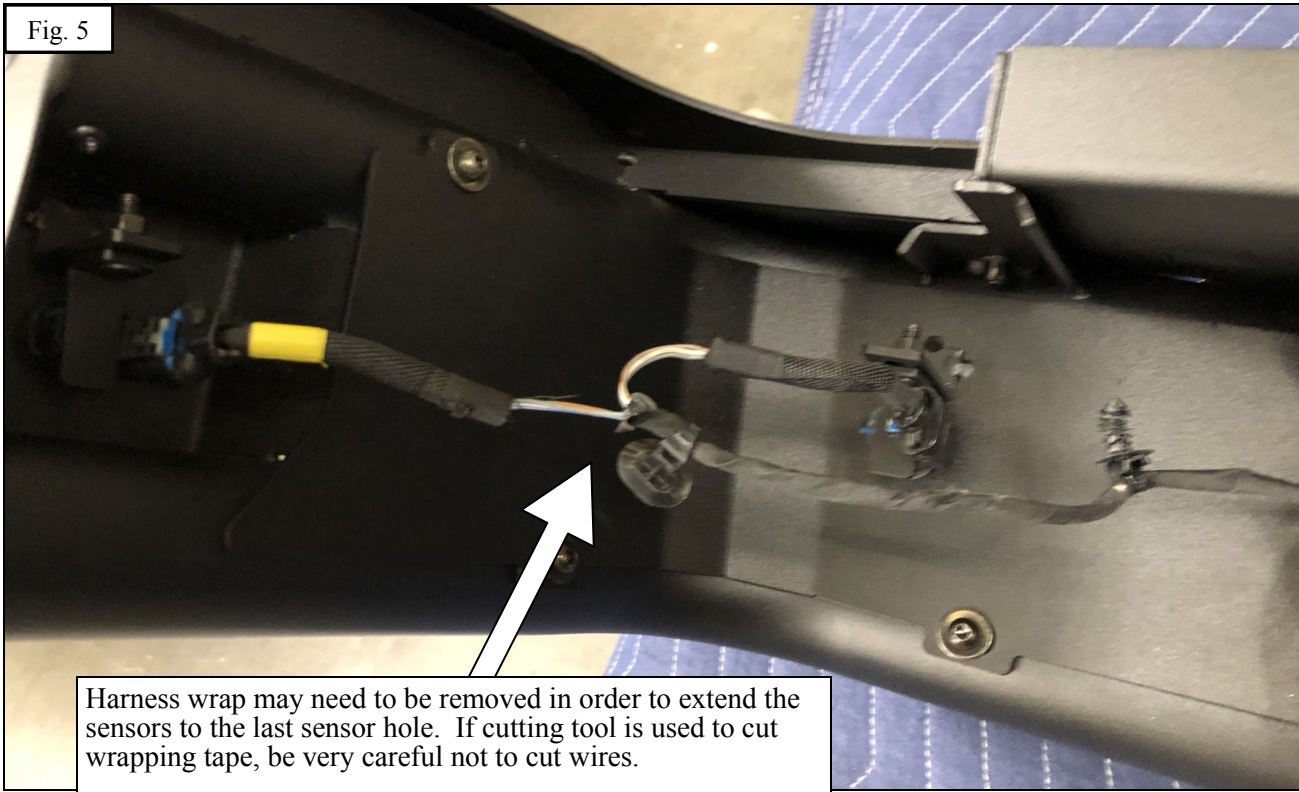


6. Install parking sensors by inserting into the holes on bumper and pressing with sensor L-tabs against bumper plate. Fasten L-tabs with the supplied M6 hardware (10-13). See **Figure 3**. Use supplied double sided tape between sensor and L-Tab to keep the sensor from rotating. **Note:** Be sure to maintain the orientation of the sensor so that it remains consistent with its original orientation. If there is not sensors use the supplied sensor plugs to cover holes.
7. Tighten M6 hardware to 5-7 ft-lbs.



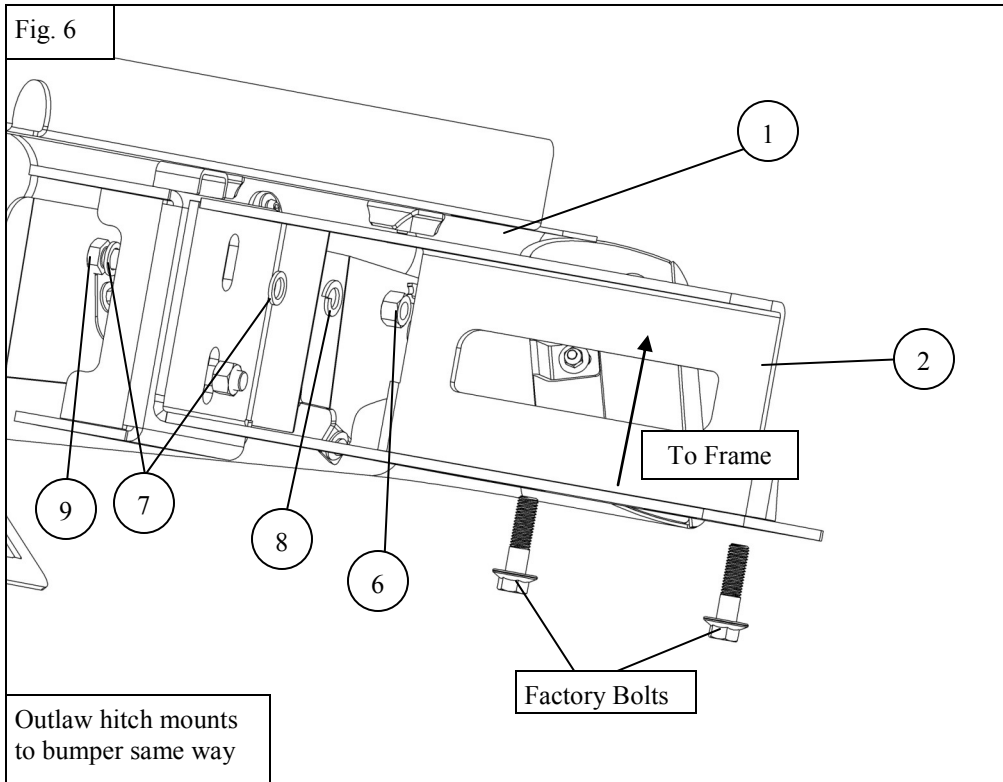
Make sure to maintain OEM orientation of sensors

Fig. 5



8. Using the supplied M12 hardware, loosely assemble the mounting brackets to the bumper, and then re-use the factory bolts to mount to the frame **See Figure 6**

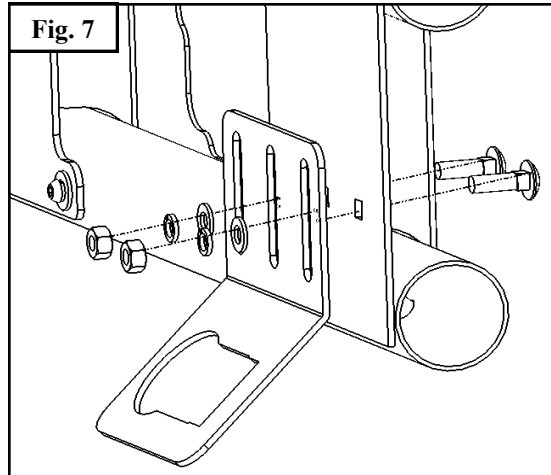
Fig. 6



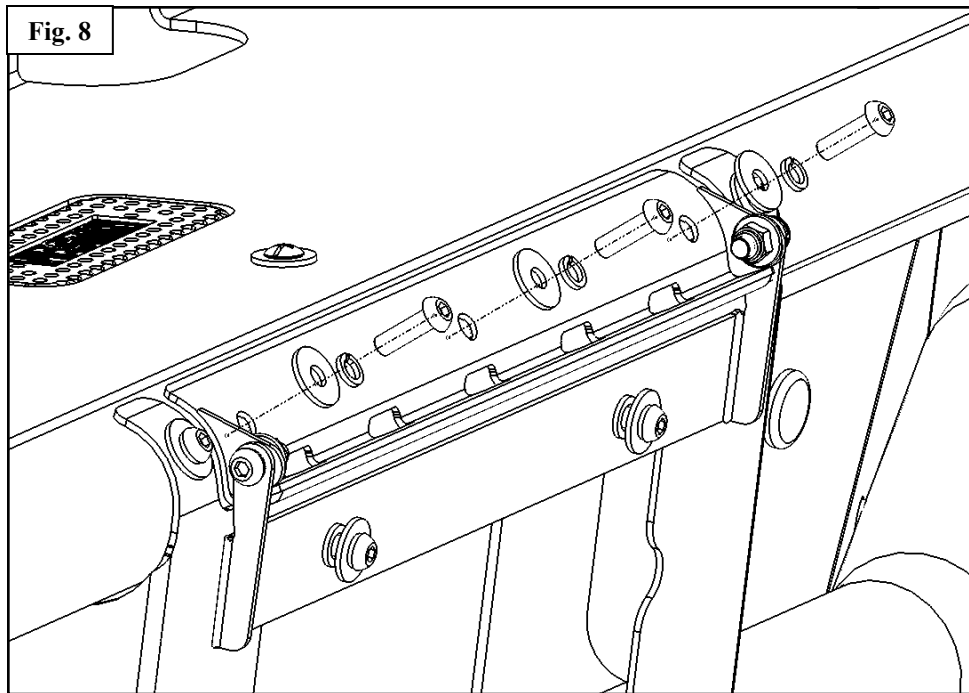
WARNING .

After you have mounted bumper on main brackets. CAREFULLY open tailgate. While tailgate is open, adjust the height of the bumper so that it has about 3/8" of clearance with respect to the tailgate. Then, tighten all M12 hardware to 50-55 ft-lbs.

9. Using M8 hardware, install trailer connector bracket (7) to the back plate of the bumper. Adjust up and down as desired and tighten M8 hardware to 15-18 ft-lbs. See **Figure 7**.



10. Using M6 SEMS button head hardware , install license plate swing mount on bumper. Tighten M6 hardware to 5-7 ft-lbs. **See Figure 8.**
11. Install license plate on the swing mount using M6 SEMS button head hardware and tighten to 5-7 ft-lbs.
12. Tighten the two nylon lock nuts on the sides until it has just enough resistance to prevent rotation due to normal condition while still allowing rotation by hand when desired or needed to access hitch.



13. Using items 27 and 28 connect the LED license plate light to one of the OEM license plate lights. Connect the black cable from the LED tape to the black cable going into the OEM license plate light. Then, connect the red cable on the LED tape to the colored (non-black) cable going to the OEM license plate light. Crimp carefully and cover with electrical tape. Use supplied zip ties and zip tie mounts to position cables as desired.

CARE INSTRUCTIONS

- REGULAR WAXING IS RECOMMENDED. DO NOT USE ANY TYPE OF POLISH OR WAX THAT MAY CONTAIN ABRASIVES.
- STAINLESS STEEL PRODUCTS CAN BE CLEANED WITH MILD SOAP AND WATER. STAINLESS STEEL POLISH SHOULD BE USED TO POLISH SMALL SCRATCHES.
- GLOSS BLACK FINISHES SHOULD BE CLEANED WITH MILD SOAP AND WATER.

WESTIN

Westin Automotive Products, Inc.
320 W. Covina Blvd
San Dimas, Ca. 91773

Thank you for choosing Westin products
for additional installation assistance please call
Customer Service (800) 793-7846

www.westinautomotive.com

INSTALLATION COMPLETE



©2020 WESTIN AUTOMOTIVE PRODUCTS, INC. ALL RIGHTS RESERVED

WESTIN

Westin Automotive Products, Inc.
320 W. Covina Blvd
San Dimas, Ca. 91773

P.N.: 75-588108-RevA

ECO #: W19-0084

Thank you for choosing Westin products
for additional installation assistance please call
Customer Service (800) 793-7846
www.westinautomotive.com

DATE: 4/01/2020



WARNING



Failure to follow these instructions could lead to death, personal injury, and / or property damage.

FASTENERS:

All Westin supplied fasteners must be utilized and installed in accordance with the installation instructions and apply torque to the specifications as defined. **DOUBLE CHECK ALL FASTENERS BEFORE INITIAL USE, AND PERIODICALLY IN THE FUTURE TO ENSURE PROPER FUNCTION AND SAFETY.**

DRILLING:

Most Westin products do not require drilling for installation. If drilling is defined as required, use caution when drilling a vehicle. **FAILURE TO REVIEW AN AREA TO BE DRILLED MAY RESULT IN PERSONAL INJURY AND/OR INJURY TO OTHERS AS WELL AS VEHICLE DAMAGE.**

EYE PROTECTION:

ALWAYS WEAR SAFETY GLASSES OR GOGGLES DURING THE INSTALLATION PROCESS TO AVOID PERSONAL INJURY.

MAXIMUM TOWING/CARRYING CAPACITY: (if applicable)

The Westin Receiver Hitches will have a visible tow rating label affixed directly on the product. User should never exceed the vehicle manufacturers maximum tow and weight rating regardless of the capacity of the hitch. **FAILURE TO FOLLOW THESE GUIDELINES WILL VOID THE WESTIN WARRANTY AND MAY RESULT IN PERSONAL INJURY AND/OR INJURY TO OTHERS AS WELL AS VEHICLE DAMAGE.**

FOR CALIFORNIA RESIDENTS ONLY-PROP 65 WARNING:

Some products may contain chemicals such as DEHP, which can cause cancer, birth defects or other reproductive harm. For more info go to www.p65warnings.ca.gov



Westin Automotive Products, Inc.
320 W. Covina Blvd
San Dimas, Ca. 91773