



SIGNATURE OF QUALITY

AUTOMOTIVE PRODUCTS, INC.

INSTRUCTIONS—INSTRUCCIONES—CONSIGNES

APPLICATION: 2009-2013 FORD F-150

APP PART # 65-1025

CLASS III RECEIVER HITCH

ITEM	QUANTITY	DESCRIPTION	TOOLS NEEDED
1	1	CLASS III RECEIVER ASSY	21MM WRENCH
2	2	M14 HEX CAP SCREW	21MM SOCKET
3	2	M14 SPLIT LOCK WASHER	RATCHET
4	2	M14 HEX NUT	TORQUE WRENCH
5	4	M14 FLAT WASHER	

WARNING: Never exceed the capacity ratings shown on the receiver hitch or the tow vehicle. See your vehicle's owners guide for towing guidelines.

1. Remove contents from box, verify if all parts listed are present and free from damage. Carefully read and understand all instructions before attempting installation.
2. Spare tire must be dropped / removed in order to install this receiver hitch. See the vehicle owners book for details.
3. Locate the rear bumper mount. Remove the four 21mm factory nuts that secure the bumper brackets to the rear portion of the vehicle frame. [Caution: Rear bumper must be supported by an additional person. Bumper will fall with the nuts removed from the factory studs.] FIGURE 1
4. The hitch assy. can then be installed on the backside of the frame mount. The factory nuts will be re-used to secure the hitch to the factory studs. Use the provided M14 fasteners to secure the bottom slot of the hitch to the bottom slot of the frame mount. FIGURE 2, 3, 4
5. Adjust the rear bumper and hitch as desired and tighten all fasteners. Torque fasteners to 75-85 ft-lbs.
6. Raise / re-install spare tire. Accessory electrical connector brackets can be installed on the welded tab on the hitch assy.

NOTICE: This product complies with all safety specifications and requirements defined for V.E.S.C. regulation V-5 & SAE J684

CARE INSTRUCTIONS

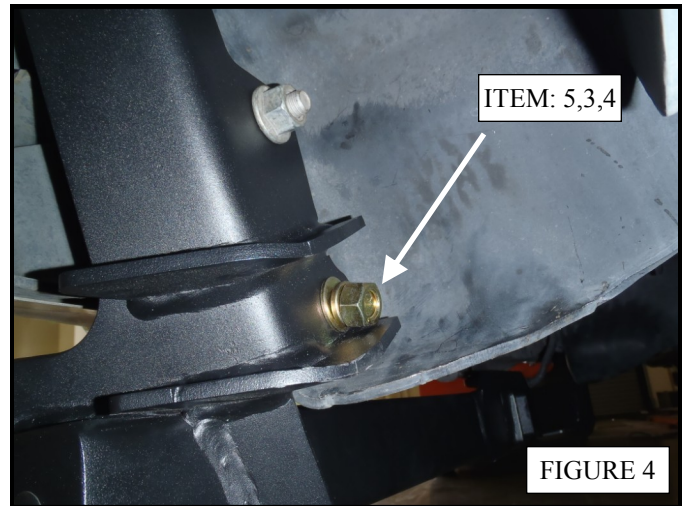
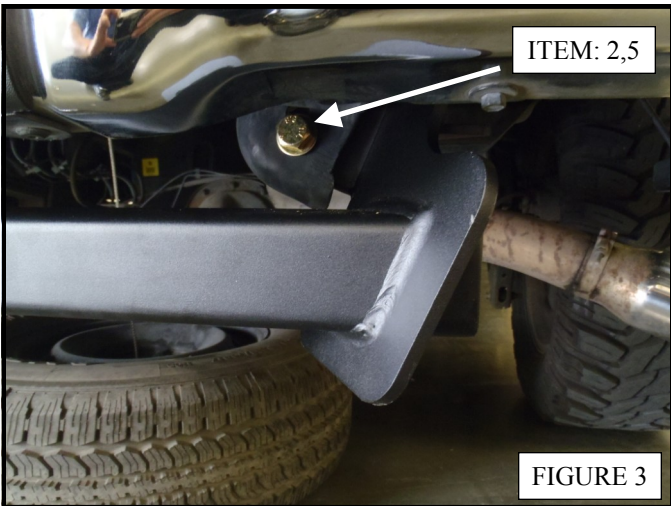
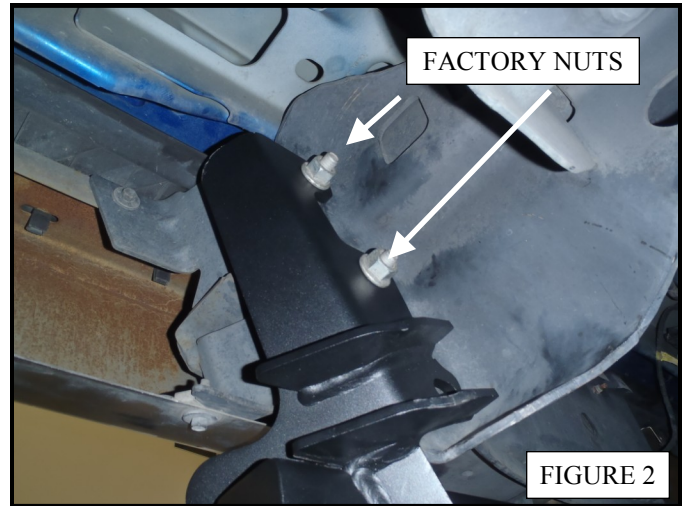
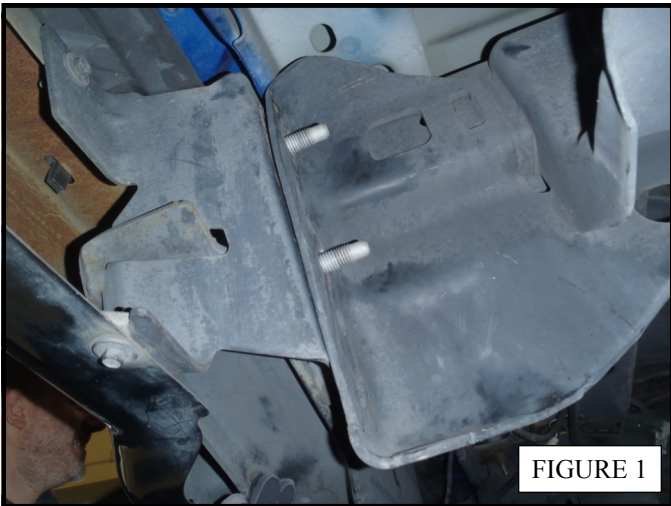
- BLACK FINISHES SHOULD BE CLEANED WITH MILD SOAP AND WATER



Westin Automotive Products, Inc.
320 Covina Blvd
San Dimas, Ca. 91773

Thank You for choosing Westin products
For Additional installation assistance please call
Customer service (800) 793-7846

www.westinautomotive.com





AUTOMOTIVE PRODUCTS, INC.
San Dimas, California

WARNINGS & NOTICES FOR THE INSTALLATION OF WESTIN TOWING PRODUCTS - CLASS III RECEIVER HITCH

NOTICE

Westin Receiver Hitches are designed to accommodate a 2" - square receiver draw bar rated for class III/IV towing. Closely follow all Westin Installation Instructions for the proper installation of product. Improper installation can result in death, serious injury, and/or product and vehicle damage. In the operation of these products, it is imperative to observe precautions for your personal safety and the safety of others.

WARNING

Failure to follow these instructions could lead to death, personal injury, and / or property damage.

FASTENERS:

All Westin supplied fasteners must be utilized and installed in accordance with the installation instructions and apply torque to the specifications as defined. **DOUBLE CHECK ALL FASTENERS BEFORE INITIAL USE, AND PERIODICALLY IN THE FUTURE TO ENSURE PROPER FUNCTION AND SAFETY.**

DRILLING:

Most Westin products do not require drilling for installation. If drilling is defined as required, use caution when drilling a vehicle. **FAILURE TO REVIEW AN AREA TO BE DRILLED MAY RESULT IN PERSONAL INJURY AND/OR INJURY TO OTHERS AS WELL AS VEHICLE DAMAGE.**

EYE PROTECTION:

ALWAYS WEAR SAFETY GLASSES OR GOGGLES DURING THE INSTALLATION PROCESS TO AVOID PERSONAL INJURY.

MAXIMUM TOWING/CARRYING CAPACITY:

The Westin Receiver Hitches will have a visible tow rating label affixed directly on the product. User should never exceed the vehicle manufacturers maximum tow and weight rating regardless of the capacity of the hitch. **FAILURE TO FOLLOW THESE GUIDELINES WILL VOID THE WESTIN WARRANTY AND MAY RESULT IN PERSONAL INJURY AND/OR INJURY TO OTHERS AS WELL AS VEHICLE DAMAGE.**



Westin Automotive Products, Inc.
320 Covina Blvd
San Dimas, Ca. 91773

Thank You for choosing Westin products
For Additional installation assistance please call
Customer service (800) 793-7846
www.westinautomotive.com